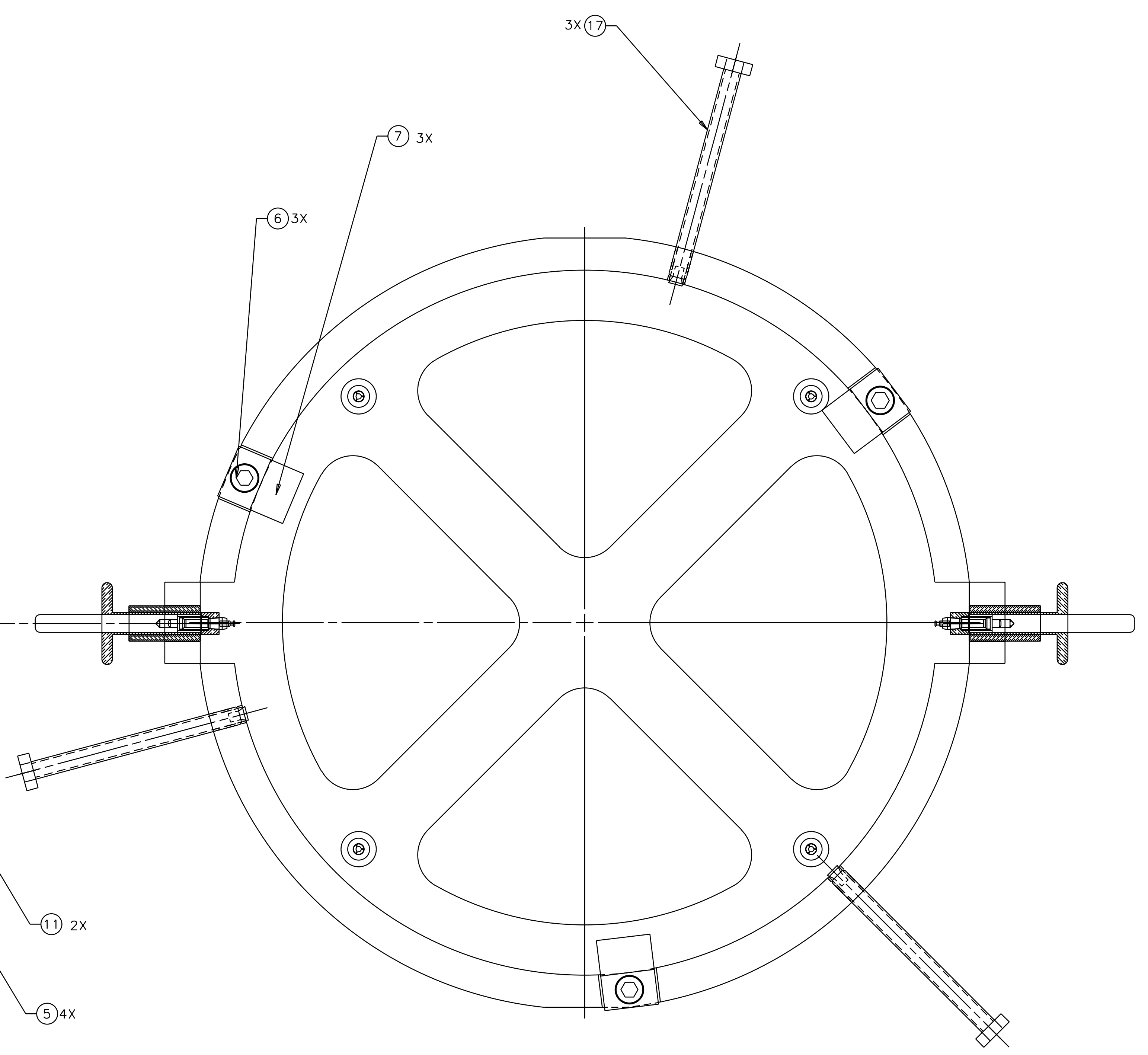
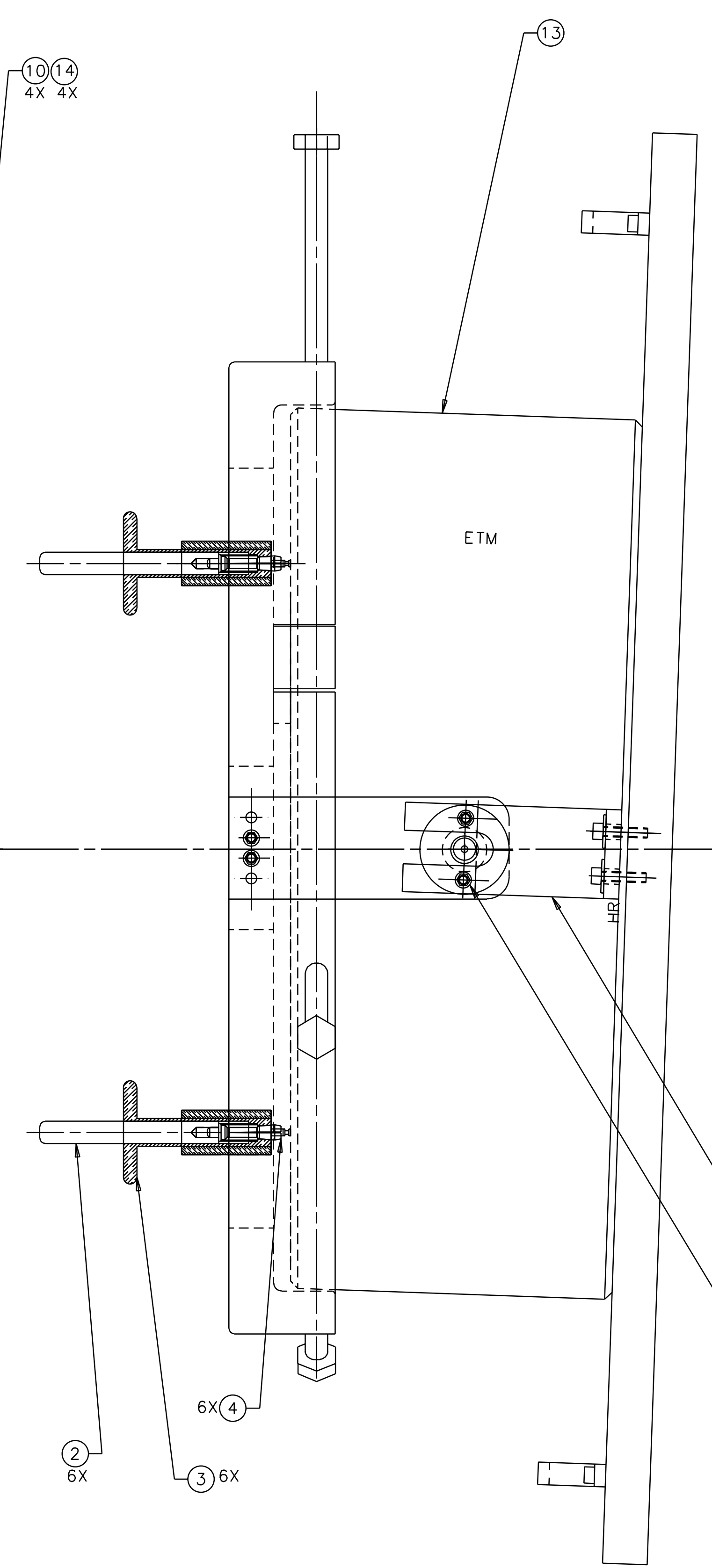
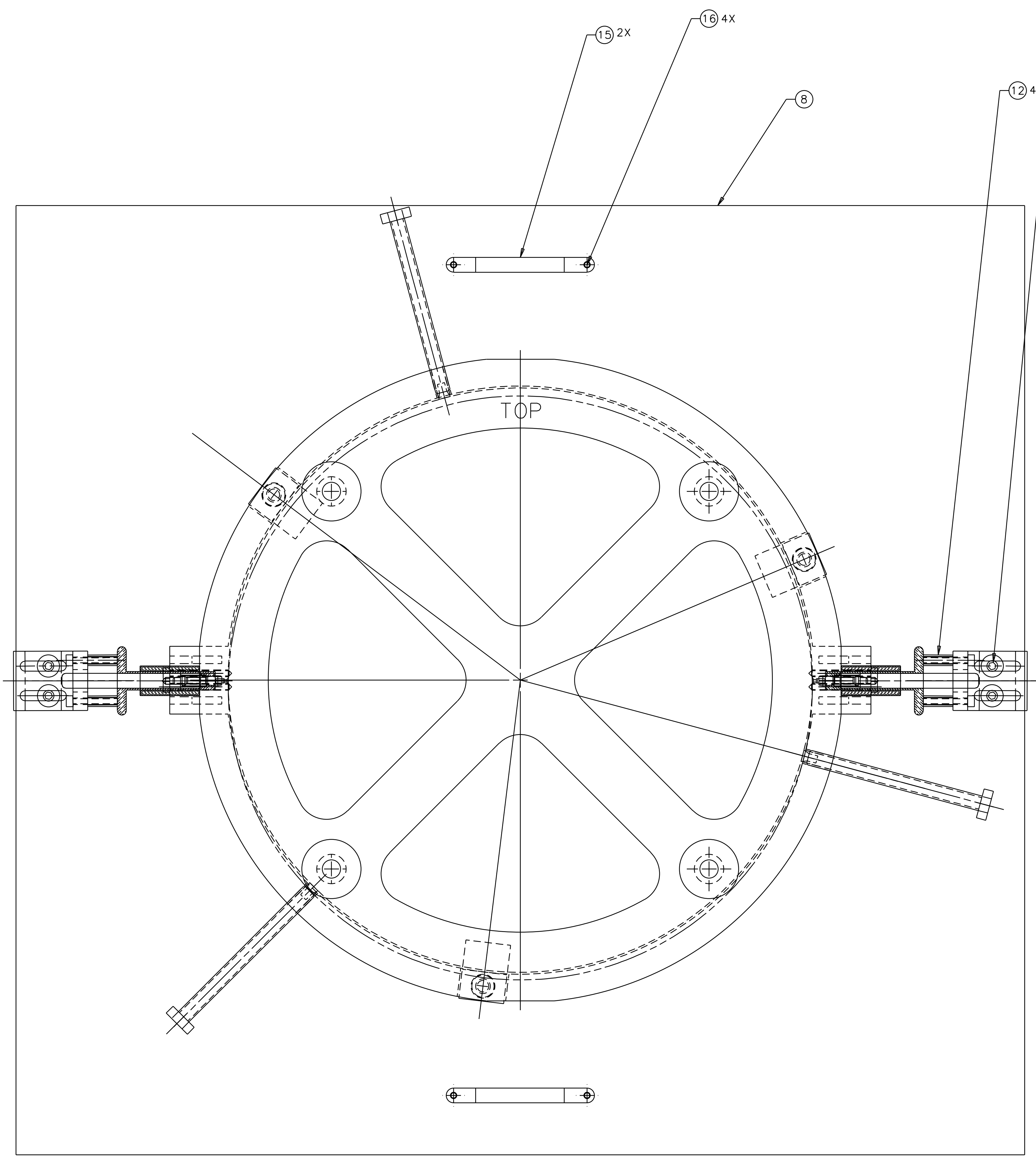
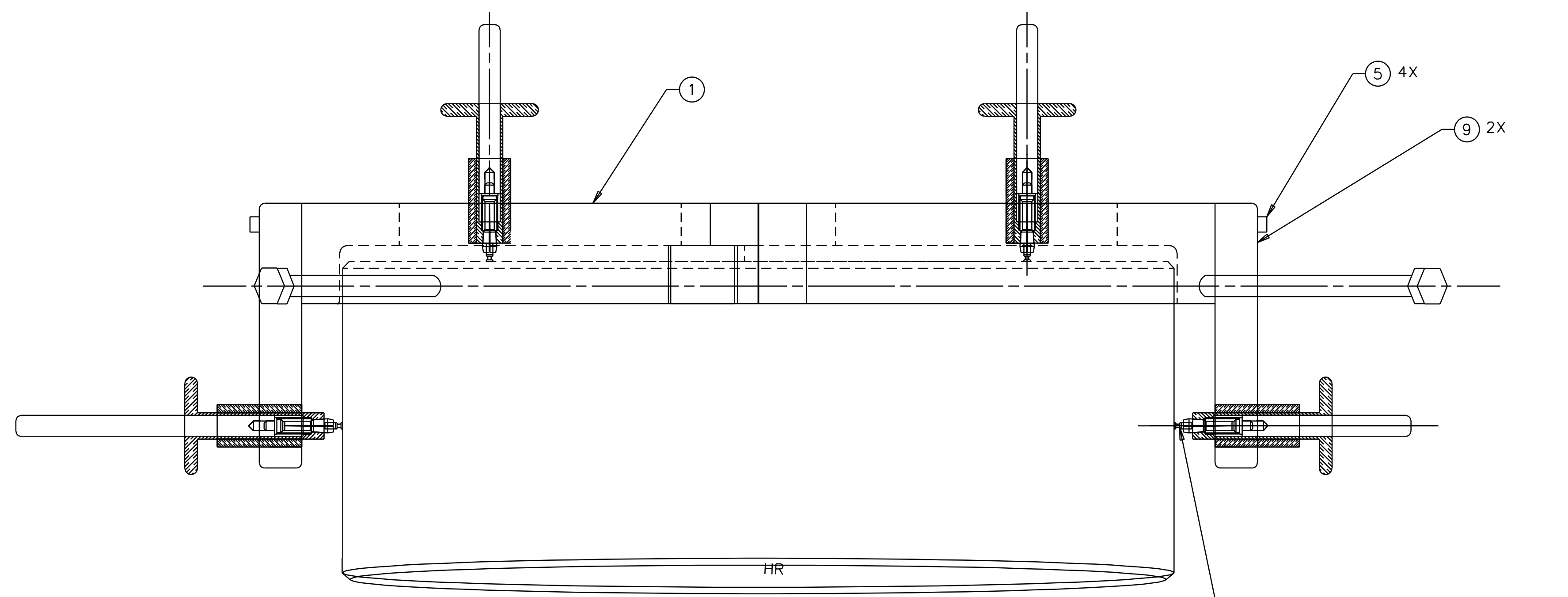


REV	DESCRIPTION OF CHANGE	SHEETS AFFECTED	APPROVAL	DATE



ITEMS 8, 11, 12, 14 AND 15 NOT SHOWN FOR CLARITY



ITEMS 8, 11, 12, 14 AND 15 NOT SHOWN FOR CLARITY

OPTIC	SIDE BLOCK PART NUMBER
ETM, MMT3, FM	D990186
ITM, 4K	D990187
RM	D990188
ITM, 2K	D990189

QTY REQ	PART OR IDENTIFYING NO	DESCRIPTION OR DESCRIPTION	MATERIAL SPECIFICATION	ITEM NO
3	D970562	BS CHAMFER STOP		17
4		5-40 X .75 SHCS	STAINLESS	16
2		HANDLE	STAINLESS	15
4		#4 OVERSIZE FLT WASHER	STAINLESS	14
1		OPTIC [ETM SHOWN]		13
4	LEE SPRING P/N LC-018C-9	COMPRESSION SPRING	STAINLESS	12
2	D990193	LOS PRESSURE BRACKET	ALUM 6061-T6	11
4		4-40 X .50 SHCS	STAINLESS	10
2	SEE TABLE 1	SIDE BLOCKS	ALUM 6061-T6	9
1	D990192	LARGE OPTIC HOLDER		8
3	D990185	LOS OPTIC PAD	PFA 440 HP	7
3		1/4-20 X .63 SHCS	STAINLESS	6
8		4-40 X .75 SHCS	Ag PLT SST	5
6	Mc MASTER CARR P/N B380T1	PENCIL MECHANISM	FROM BEROL PENCIL	4
6	D990160	BRASS PLUNGER	BRASS	3
6	D990161	PENCIL MECH. HOLDER	PRECISION STAINLESS SHAFT	2
1	D990159	GRIPPER MAGNET/STANDOFF RING		1

UNLESS OTHERWISE SPECIFIED DIMENSIONS ARE IN INCHES TOLERANCES ARE: FRACTIONS DECIMALS ANGLES

SEE NOTES

DO NOT SCALE DRAWING

APPROVALS: [Signature] DATE: 4/99

TITLE: GRIPPER ASSEMBLY

SIZE: E

SCALE: 1/1

FILE LOCATION: /home/dcc/docs/D990158.pdf

FINISH: [Blank]

MATERIAL: [Blank]

REV: 00

SHEET: 1 OF 1

FILE LOCATION	FINISH	MATERIAL	SIZE	SCALE	REV	SHEET
/home/dcc/docs/D990158.pdf			E	1/1	00	1 OF 1