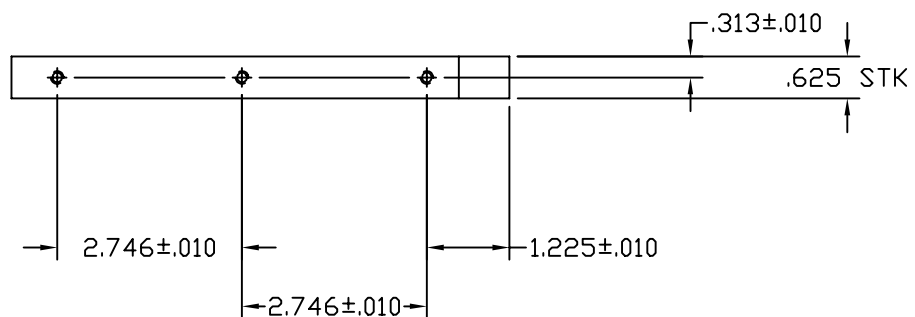
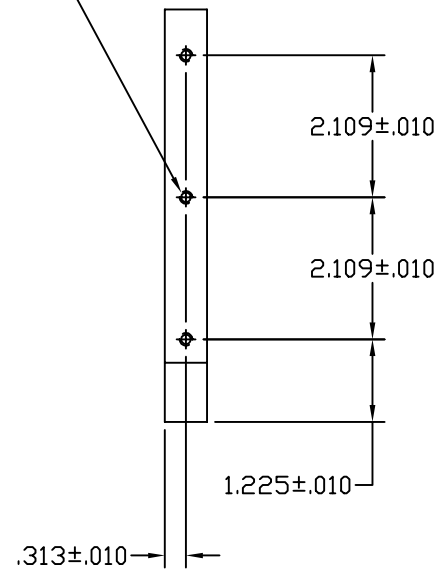
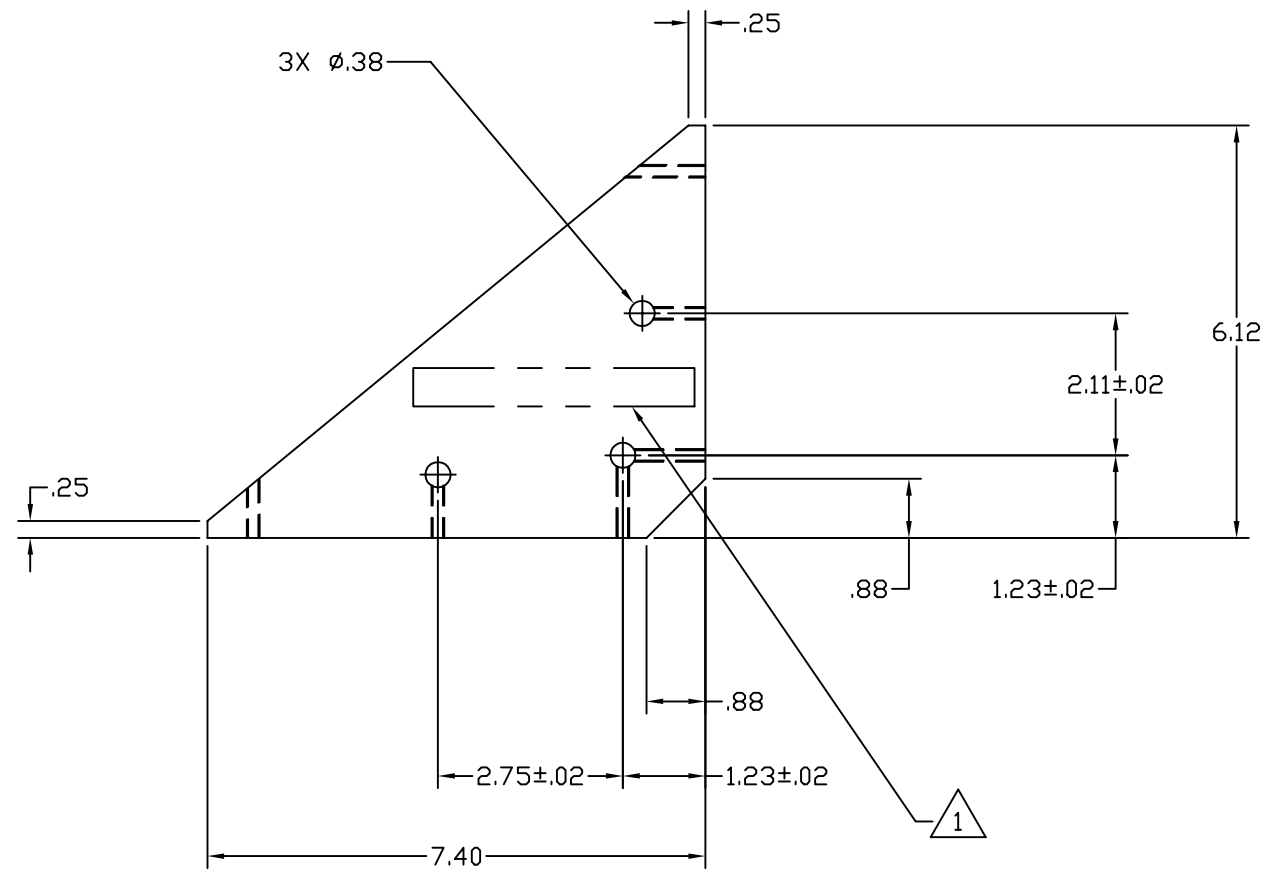


- NOTES: (UNLESS OTHERWISE SPECIFIED)
- 1. STAMP OR ENGRAVE SERIAL NUMBER ON NOTED FACE OF PART PER LIGO L970196.
 - 2. ALL MACHINING FLUIDS SHALL BE WATER SOLUBLE AND FREE OF SULFUR, CHLORINE, AND SILICONE.

6X #10-24 UNC-2B THRU



		UNLESS OTHERWISE SPECIFIED DIMENSIONS ARE IN INCHES							LIGO CALIFORNIA INSTITUTE OF TECHNOLOGY MASSACHUSETTS INSTITUTE OF TECHNOLOGY		
		TOLERANCES: FRACTIONAL ± ANGULAR ± ANGULARMACH ± BEND ± TWO PLACE DECIMAL ±.01		THREE PLACE DECIMAL ±.005 FINISHED SURFACE RMS BREAK CORNERS IN: OUT: .005-.010 REMOVE ALL BURRS						CAVITY BEAM DUMP MOUNTING BRACKET GUSSET	
		MATERIAL: 6061-T6 ALUMINUM	HEAT TREAT:	FINISH:	A	DCN E990108	Conley	3-22-99	CAD FILE	SIZE DWG. NO.	
DWG. NO.	DESCRIPTION	USED ON:	NEXT ASS'Y:	REV	DESCRIPTION	APPR'D	CHECK	DRWN	DATE	D990150-A.dwg	B D990150-A
REFERENCE DRAWINGS		D990143		ISSUE DESCRIPTION				SCALE	NTS	SHEET	1 OF 1