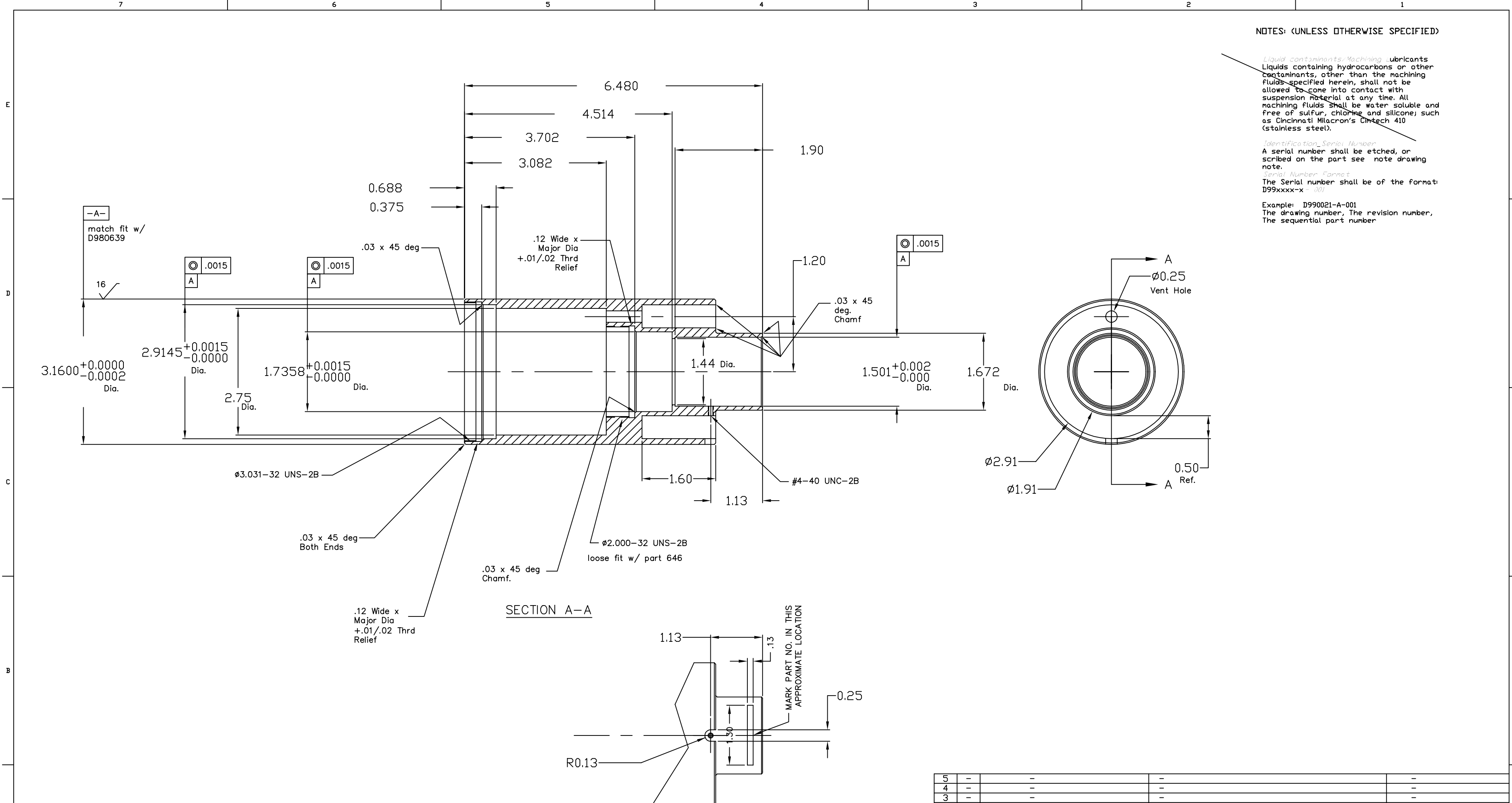


NOTES: (UNLESS OTHERWISE SPECIFIED)

Liquid contaminants/Machining lubricants
Liquids containing hydrocarbons or other
contaminants, other than the machining
fluids specified herein, shall not be
allowed to come into contact with
suspension material at any time. All
machining fluids shall be water soluble and
free of sulfur, chlorine and silicone; such
as Cincinnati Milacron's Cimtech 410
(stainless steel).

Identification/Serial Number
A serial number shall be etched, or
scribed on the part see note drawing
note.
Serial Number Format
The Serial number shall be of the format:
D99xxxx-x-001
Example: D990021-A-001
The drawing number, The revision number,
The sequential part number



Qty: Make 1 Total Per Assembly

UNLESS OTHERWISE SPECIFIED DIMENSIONS ARE IN INCHES		TOLERANCES:		THREE PLACE DECIMAL ± .010		FINISHED SURFACE RMS 63		BREAK CORNERS IN - OUT -		REMOVE ALL BURRS	
		FRACTIONAL ± ---	ANGULAR ±								
		TWO PLACE DECIMAL ± .02									
XXX	XXX	MATERIAL:	HEAT TREAT:	FINISH:							
DWG. NO.	DESCRIPTION	300 Stainless Steel	None	None							
REFERENCE DRAWINGS		USED ON: XXX	NEXT ASS'Y: XXX								
				FOR FABRICATION							
				PRE-RELEASE		Ligo-E980321-00-D					
				DESCRIPTION		DCN NUMBER		APPR'D CHECK DRWN DATE			
										SCALE FULL	
										SHEET 1 of 1	

REF	QTY	PART or DRWG No.	DESCRIPTION	MATERIAL
5	-	-	-	-
4	-	-	-	-
3	-	-	-	-
2	-	-	-	-
1	-	-	-	-

LIGO CALIFORNIA INSTITUTE OF TECHNOLOGY
MASSACHUSETTS INSTITUTE OF TECHNOLOGY

ETM TELESCOPE
LENS FOCUS,
BARREL

DATE: 6-2-99
DATE: 5-25-99

CAD FILE: D990021-00-D
SIZE DWG. NO. D
D990126-B