

LOCATIONS OF DUAL, 25-PIN FEEDTHROUGH CONNECTORS

	D1	D3	D6
HAM1	3	1, 2	1, 2
HAM2	—	—	1, 2
HAM3	—	—	2

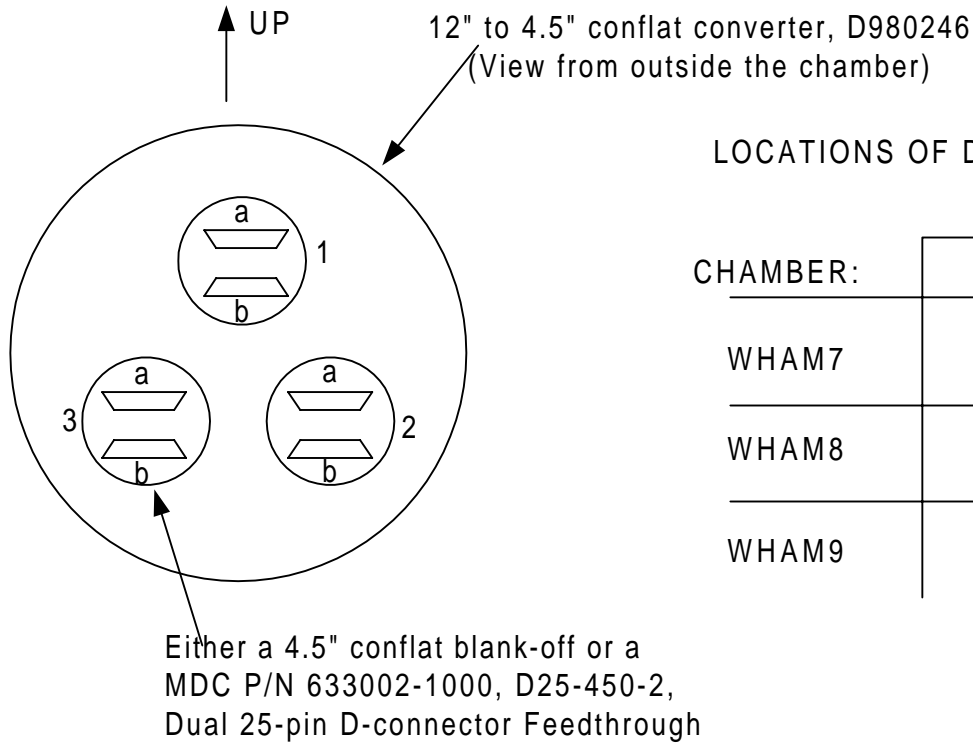
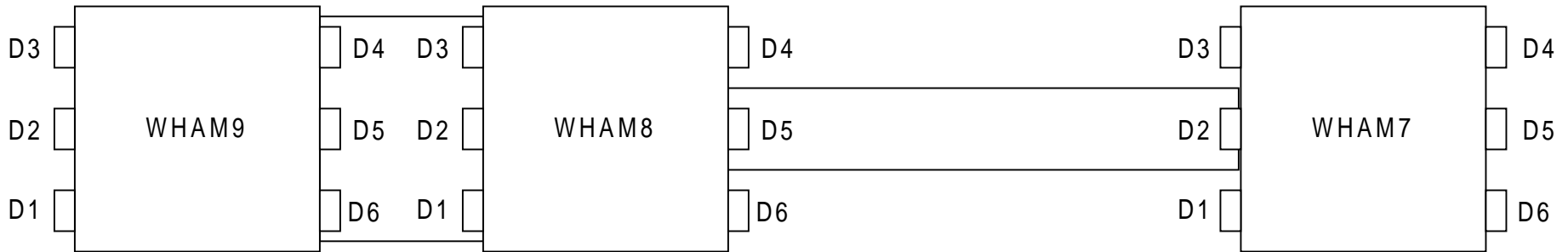
Notes:

1. Port designations are per drawing D980226
2. No electrical feedthroughs are installed on chambers HAM 4,5 and 6
3. This drawing applies to both the Hanford (WHAM1,2,3) and Livingston observatories (LHAM1,2,3) for the 4km interferometer

ELECTRICAL FEEDTHROUGH LOCATIONS

Sheet 1: 4KM HAM CHAMBERS

D990091-A  
D. Coyne 3/8/99



LOCATIONS OF DUAL, 25-PIN FEEDTHROUGH CONNECTORS

CHAMBER:	PORT			
	D1	D3	D4	D6
WHAM7	1,3	1,2	1,3	1,2
WHAM8	1,3	—	—	—
WHAM9	3	—	—	—

Notes:

1. Port designations are per drawing D980226
2. No electrical feedthroughs are installed on chambers WHAM 10, 11 and 12
3. This drawing applies only to the Hanford 2km interferometer

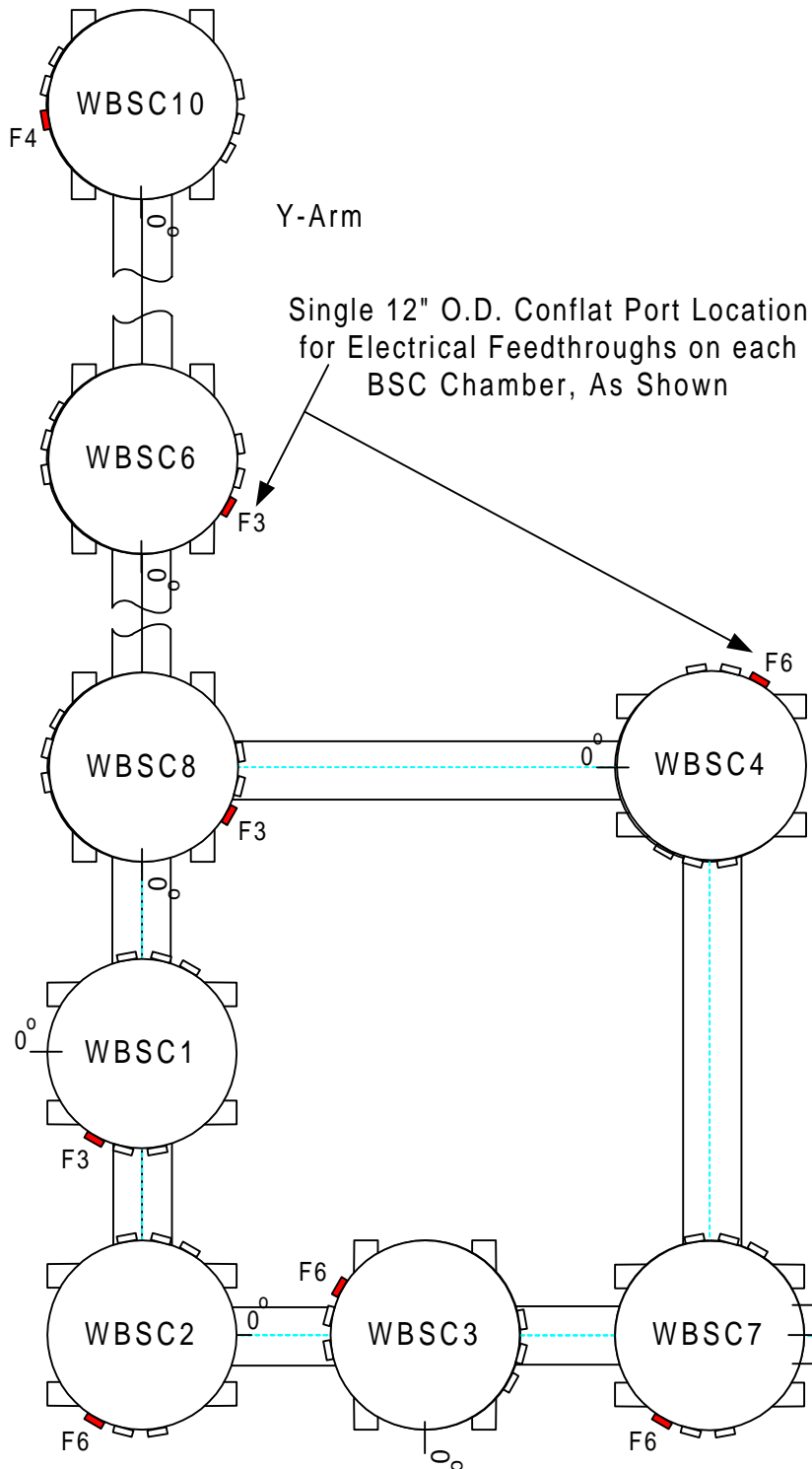
ELECTRICAL FEEDTHROUGH LOCATIONS

Sheet 2: 2KM HAM CHAMBERS

D990091-A  
D. Coyne 3/8/99

Note:

1. Port designations are per drawing D980227 and E950111



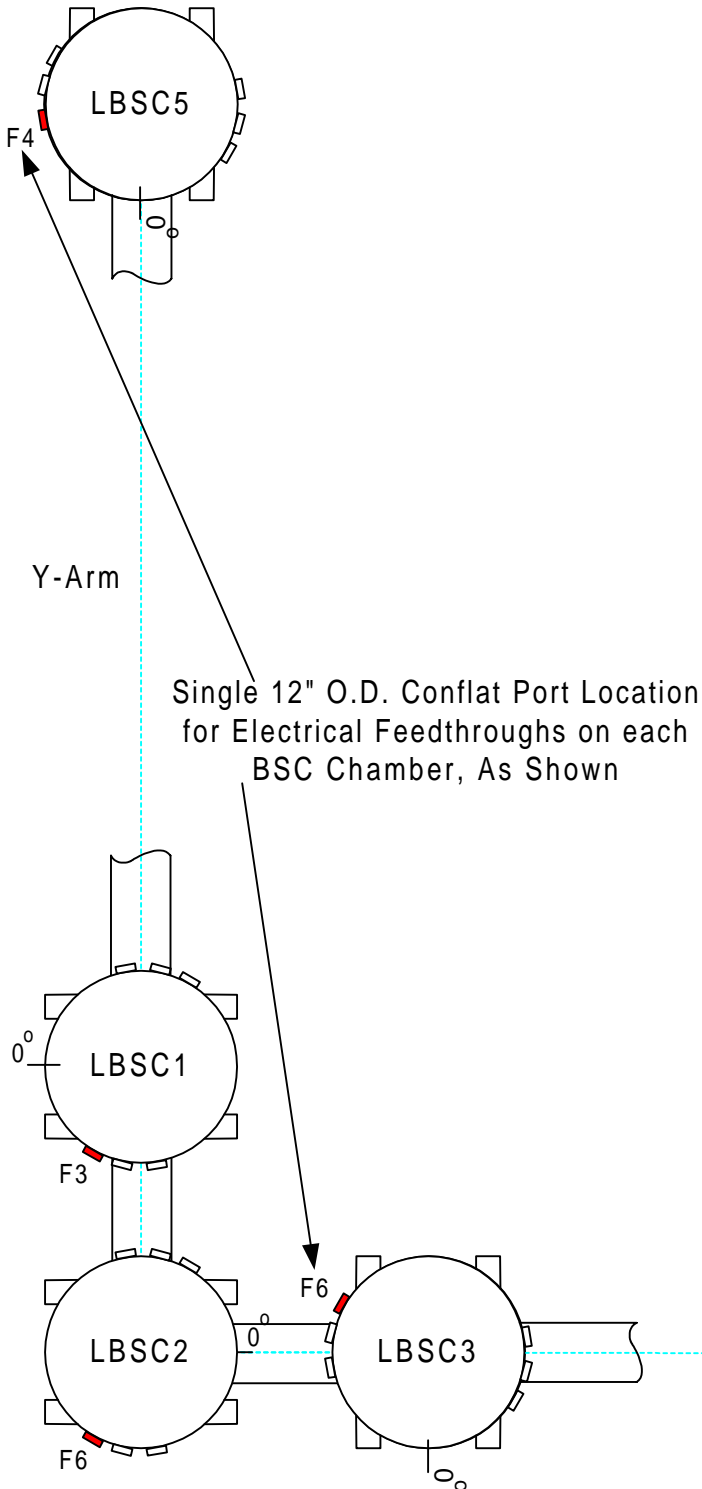
CHAMBER	ELECTRICAL FEEDTHROUGH PORT CONFIGURATION (View from outside the chamber)
WBSC7 WBSC8	
WBSC1 WBSC2 WBSC3 WBSC4	<p>D25-450-2, Dual 25-pin D-Connectors Feedthroughs, MDC P/N 633002-1000</p>
WBSC5 WBSC6 WBSC9 WBSC10	

X-Arm

ELECTRICAL FEEDTHROUGH LOCATIONS  
 Sheet 3: LHO BSC CHAMBERS  
 D990091-A  
 D. Coyne 3/23/99

Note:

1. Port designations are per drawing D980227 and E950111



CHAMBER	ELECTRICAL FEEDTHROUGH PORT CONFIGURATION (View from outside the chamber)
LBSC1 LBSC2 LBSC3	<p>D25-450-2, Dual 25-pin D-Connectors Feedthroughs, MDC P/N 633002-1000</p>
LBSC4 LBSC5	<p>12" to 4.5" conflat converter D980246</p> <p>4.5" conflat blank-off</p>

X-Arm

ELECTRICAL FEEDTHROUGH LOCATIONS  
Sheet 4: LLO BSC CHAMBERS  
D990091-A  
D. Coyne 3/23/99