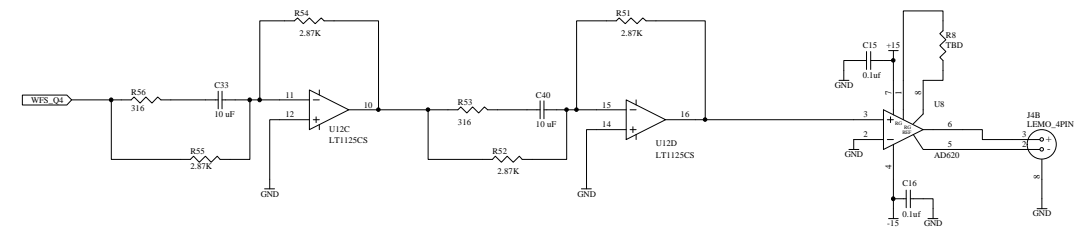
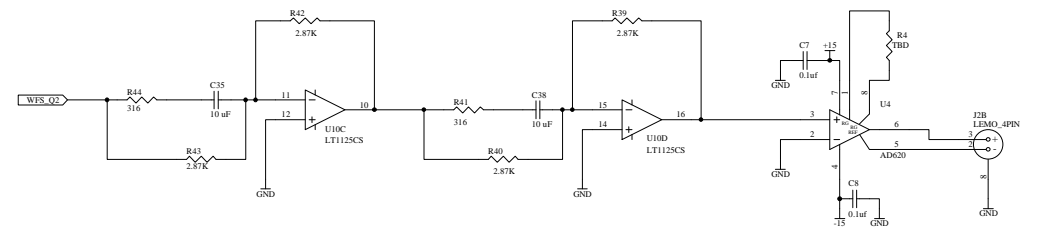
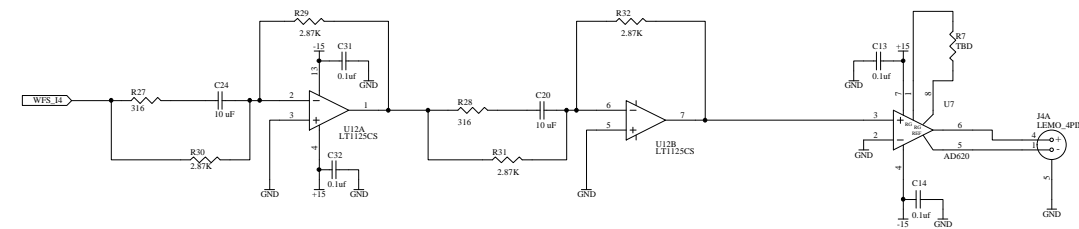
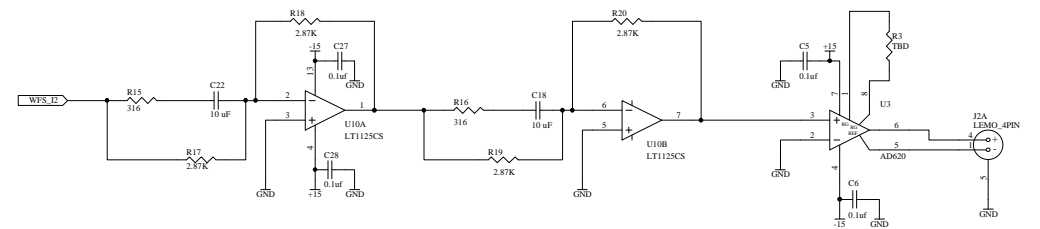
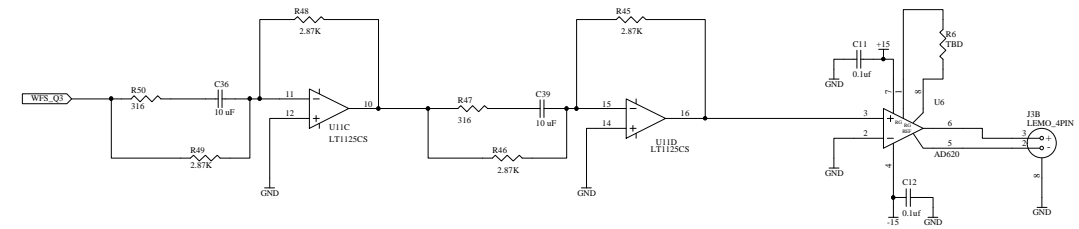
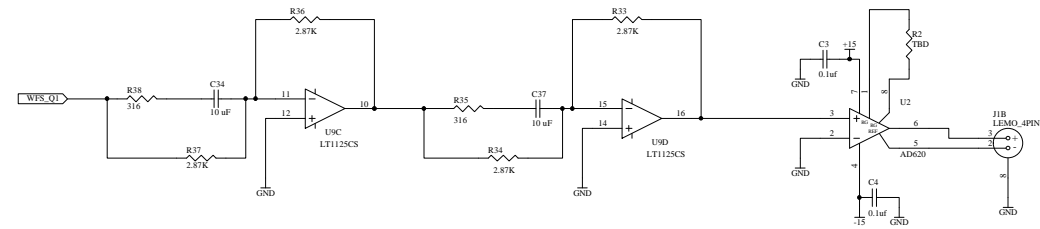
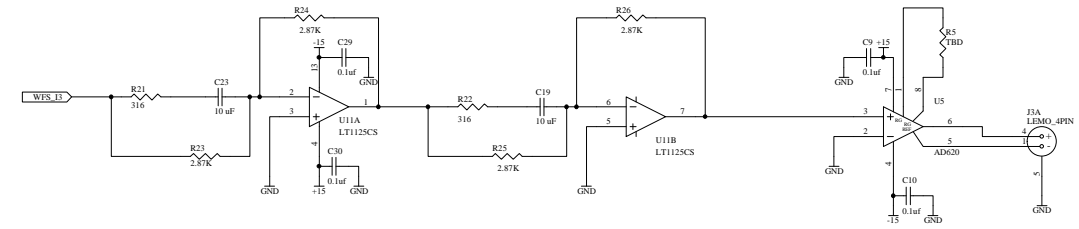
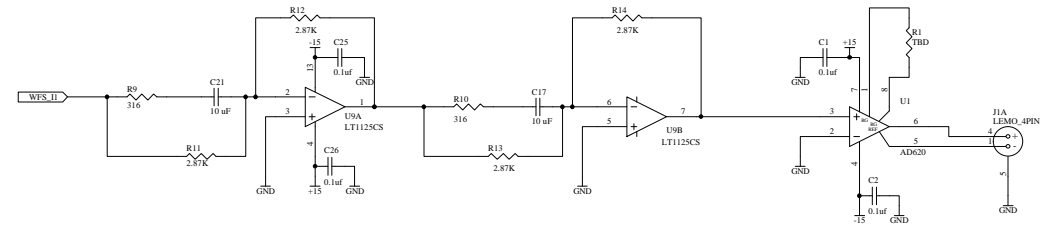
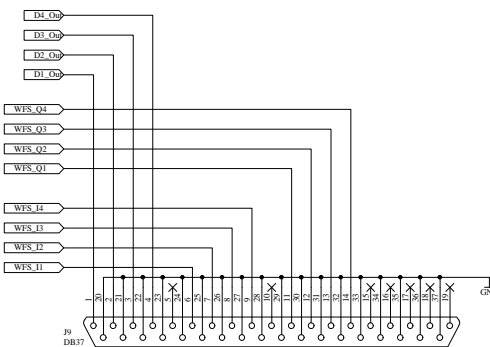
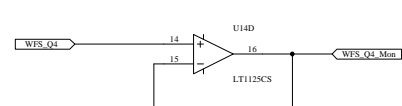
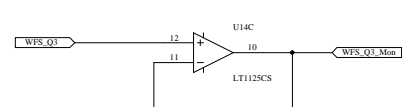
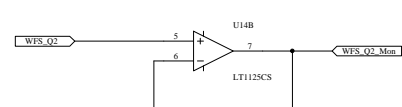
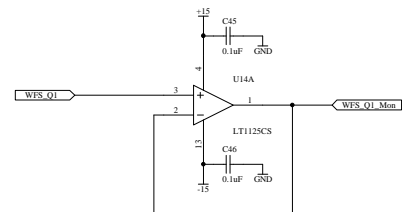
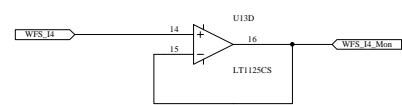
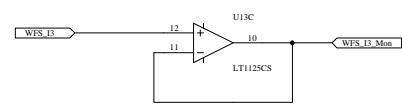
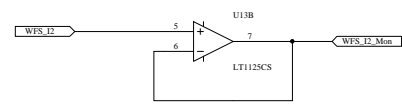
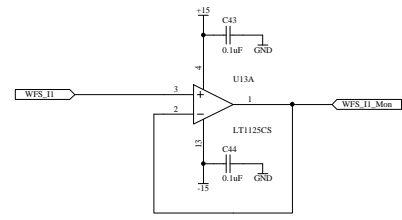


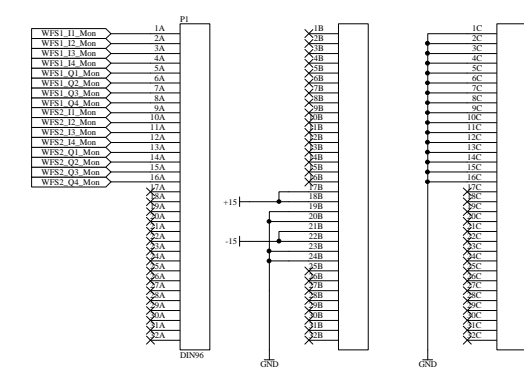
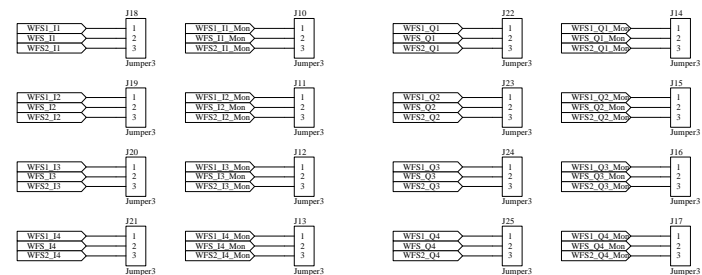
Nominal Whiting is 2ea. 5Hz zeros and 2ea. 50 Hz poles, Gain 1 @ DC.



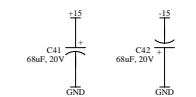
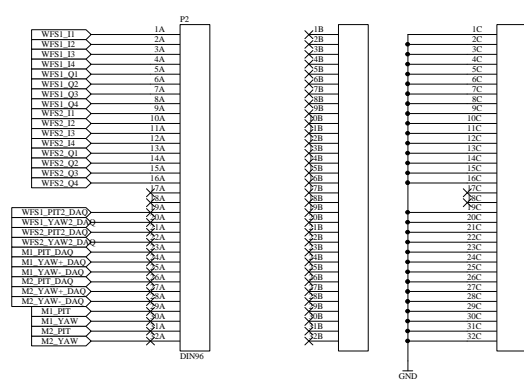
Note:  
TBD value resistors are omitted from nominal design for voltage gain of 1.



Note:  
These jumpers are used to select which WFS (1 or 2) the board will be used to control/monitor. Signals are routed from the 37 pin D input connector to the appropriate connections on the P2 connector.  
For WFS 1 jumper should be placed from pin 1 to 2.  
For WFS 2 jumper should be placed from pin 2 to 3.



Daisy-Chain Connection to Servo Amp and Steering Mirror Modules



WFS Segment DC DAQ Monitors

