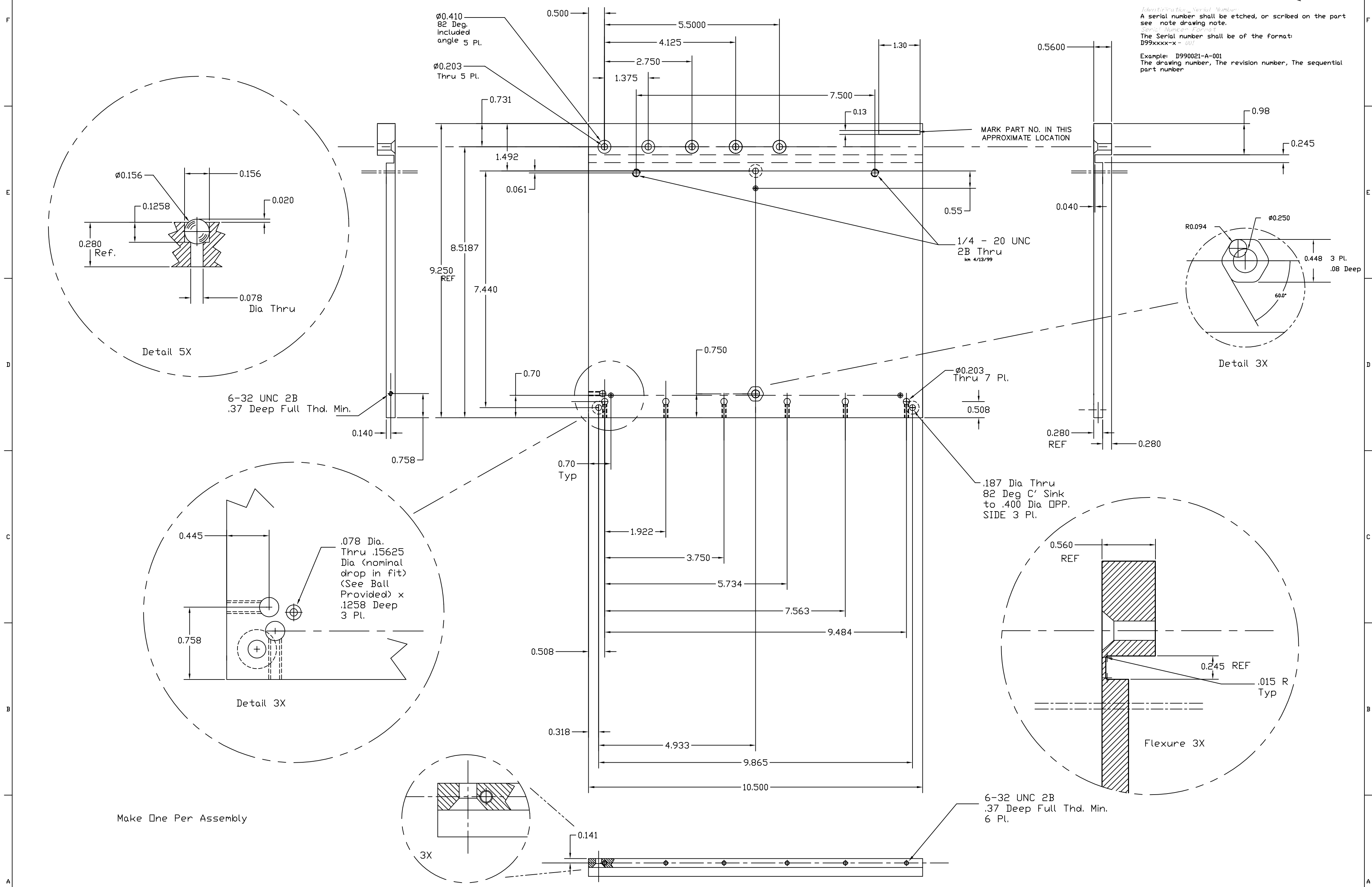


Liquids containing hydrocarbons or other contaminants, other than the machining fluids specified herein, shall not be allowed to come into contact with suspension material at any time. All machining fluids shall be water soluble and free of sulfur, chlorine and silicone, such as Cincinnati Milacron's Cimtech 410 (stainless steel).

Identification - Serial Number
 A serial number shall be etched, or scribed on the part see note drawing note.
Serial Number Format
 The Serial number shall be of the format: D99xxxx-x-001
 Example: D990021-A-001
 The drawing number, The revision number, The sequential part number



UNLESS OTHERWISE SPECIFIED DIMENSIONS ARE IN INCHES				TITLE: Elevation Flexure (P O Mirror)											
TOLERANCES: FRACTIONAL = --- THREE PLACE DECIMAL = .008 ANGULAR = FINISHED SURFACE RMS 6.3 BREAK CORNERS IN - OUT - REMOVE ALL BURRS				LIGO CALIFORNIA INSTITUTE OF TECHNOLOGY MASSACHUSETTS INSTITUTE OF TECHNOLOGY											
MATERIAL: 7075 T-6 HEAT TREAT: None FINISH: None				C NAME CHANGE kern 6/30/99											
USED IN XXX NEXT ASS'Y XXX				B FOR FABRICATION kern 6/28/99											
				A PRE-RELEASE kern 5/11/99											
				REV DESCRIPTION ISSUE DESCRIPTION DCC SYS DET CDS VE CC BT DRWN DATE											
				CADFILE# 0990041-C SIZE E DWG NO. D990041-C											
				SCALE Full SHEET											