

Rack Mount Components w/Locations

Loc	Description	Vendor	Model	Designator
02	+/- 0-30VDC Power Supply	Sorenson		PS-1
03	+/- 0-30VDC Power Supply	Sorenson		PS-2
04	+/- 0-30VDC Power Supply	Sorenson		PS-3
05	+/- 0-30VDC Power Supply	Sorenson		PS-4
07	DIN Rail w/terminal blocks (rear mount)			DIN-1
08	VME Crate (Data Acquisition)			VME-1
17	DAQS Interface Chassis (LEMO)	LIGO		DAQIC-1
18	DAQS Interface Chassis (LEMO)	LIGO		DAQIC-2
20	DAQS Interface Chassis (BNC/1KFilter)	LIGO		DAQIC-3
21	Accelerometer Signal Conditioner	Endevco		ACCSC-1
22	Accelerometer Signal Conditioner	Endevco		ACCSC-2
24	DAQS Interface Chassis (BNC/1KFilter)	LIGO		DAQIC-4
25	DAQS Interface Chassis (LEMO)	LIGO		DAQIC-5
27	DAQS Interface Chassis (BNC/1KFilter)	LIGO		DAQIC-6
29	VME Crate (Global Diagnostics)			VME-2
38	GDS BNC Patch Panel	LIGO		GDSIC-1

NOTES:

1) This drawing is PRELIMINARY and is only to be used for initial installation of rack mount components and connection of PEM signals. Cabling to other Detector components and GDS are pending final equipment designs for those subsystems.

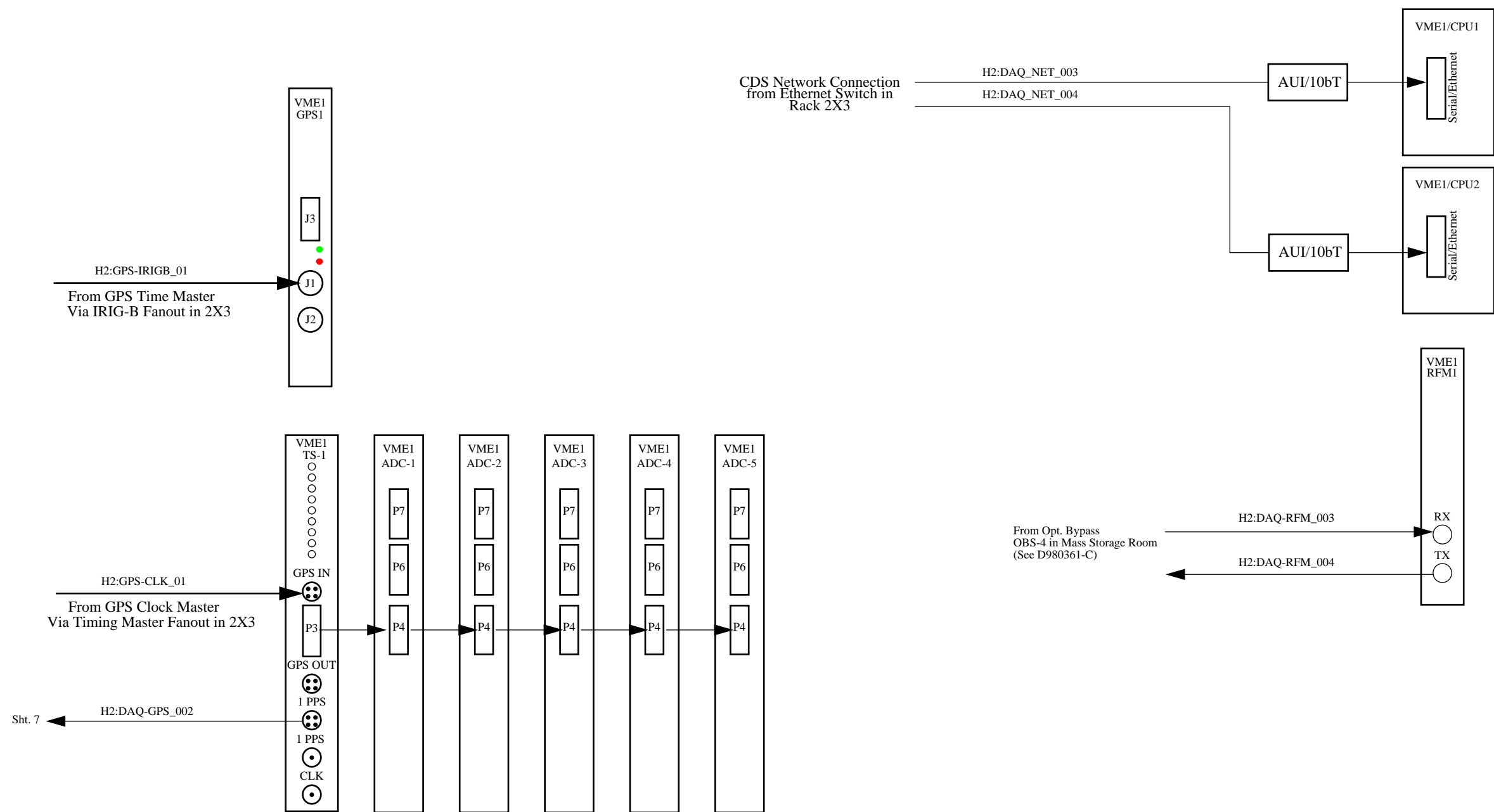
VME1 Modules / Slot Assignments

Slot	Description	Vendor	Model	Designator
1	MIPS Processor	Heurikon	4700	CPU-1
2	MIPS Processor	Heurikon	4700	CPU-2
3	Reflected Memory	VMIC	5588DMA	RFM-1
4	GPS Slave	Brandywine		GPS-1
5	Timing Slave	LIGO		TS-1
6	32 channel ADC	ICS	110B1	ADC-1
7	32 channel ADC	ICS	110B1	ADC-2
8	32 channel ADC	ICS	110B1	ADC-3
9	32 channel ADC	ICS	110B1	ADC-4
10	32 channel ADC	ICS	110B1	ADC-4
11	Backplane Split -----	-----	-----	-----
12	68040 Processor	Motorola	162-333	CPU-3
13-21	Empty	-----	-----	-----

VME2 Modules / Slot Assignments

Slot	Description	Vendor	Model	Designator
1	MIPS Processor	Heurikon	4700	CPU-1
2	MIPS Processor	Heurikon	4700	CPU-2
3	Reflected Memory	VMIC	5588DMA	RFM-1
4	GPS Slave	Brandywine		GPS-1
5	Timing Slave	LIGO		TS-1
6	32 channel DAC	ICS	115	DAC-1

UNLESS OTHERWISE SPECIFIED DIMENSIONS ARE IN INCHES TOLERANCES: FRACTIONAL ± ANGULAR RACH ± BEND ± TWO PLACE DECIMAL ± THREE PLACE DECIMAL ± FINISHED SURFACE RMS BREAK CORNERS IN OUT REMOVE ALL BURRS		CURRENT REVISION APPROVAL		LIGO CALIFORNIA INSTITUTE OF TECHNOLOGY MASSACHUSETTS INSTITUTE OF TECHNOLOGY	
DRAWN R. Bork	GROUP	SIGNATURE	DATE 2/24/99	Hanford CDS Rack Layout - 2X5 Chassis Layouts	
CHECKED				SCALE	SIZE DWG. NO. B D990016-00-C
DO NOT SCALE THIS DRAWING	REV	DESCRIPTION	SHEETS EFFECTED	DATE	REV.
USED ON:					
REFERENCE DRAWINGS		ISSUE DESCRIPTION			CAD FILE SCALE SHEET 1 of 10 STD VER. 01
6	5	4	3	2	1

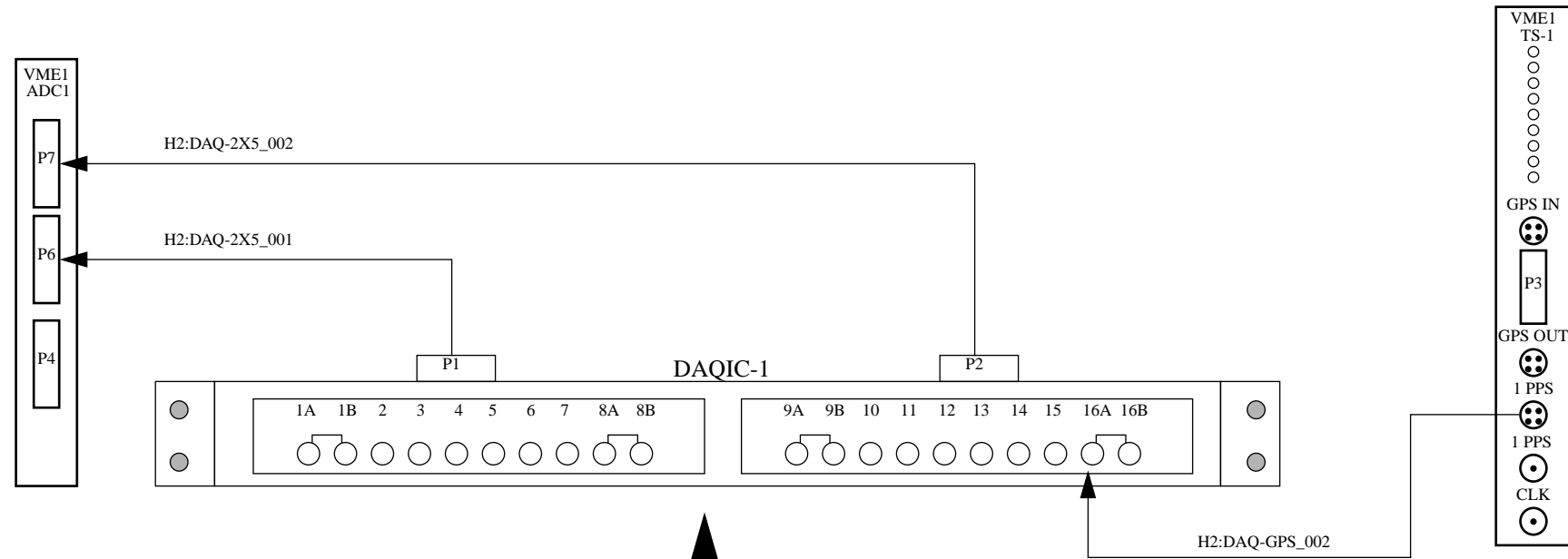


D980361-C	Hanford DAQS Network			UNLESS OTHERWISE SPECIFIED DIMENSIONS ARE IN INCHES TOLERANCES: FRACTIONAL ± ANGULAR RACH ± BEND ± TWO PLACE DECIMAL ± THREE PLACE DECIMAL ± FINISHED SURFACE RMS BREAK CORNERS IN OUT, REMOVE ALL BURRS				CURRENT REVISION APPROVAL			LIGO CALIFORNIA INSTITUTE OF TECHNOLOGY MASSACHUSETTS INSTITUTE OF TECHNOLOGY Hanford CDS Rack Layout - 2X5 Network and Timing Connections VME Crate 1				
D970583-C	Hanford Control and Monitoring Network							DRAWN R. Bork	GROUP	SIGNATURE		DATE 2/24/99			
D980354-C	Hanford Timing System Connections							CHECKED							
DWG. NO.	DESCRIPTION	DWG. NO.	DESCRIPTION	USED ON:	REV	DESCRIPTION	SHEETS EFFECTED	DATE				SCALE	SIZE B	DWG. NO. D990016-00-C	REV.
6		5		NEXT ASS'Y:		ISSUE DESCRIPTION						CAD FILE	SCALE	SHEET 2 of 10	STD
	REFERENCE DRAWINGS														VER. 01

ADC-1

Chan	Name	Rate
00	H2:IOO-IB1_3	2048
01	H2:IOO-IB2_3	2048
02	H2:IOO-WFS1_P	2048
03	H2:IOO-WFS1_Y	2048
04	H2:IOO-WFS2_P	2048
05	H2:IOO-WFS2_Y	2048
06	H2:IOO-WFS1_DCP	2048
07	H2:IOO-WFS1_DCY	2048
08	H2:IOO-WFS2_DCP	2048
09	H2:IOO-WFS2_DCY	2048
10	H2:IOO-IB1_1	2048
11	H2:IOO-IB1_2	2048
12	H2:IOO-IB2_1	2048
13	H2:IOO-IB2_2	2048
14	H2:IOO-MC_I	2048
15		
16	H2:IOO-MC_L	16384
17	H2:IOO-MC_F	16384
18	H2:IOO-MC_TO1	16384
19	H2:IOO-MC_TO2	16384
20	H2:PSL-REFCAV_I	16384
21	H2:PSL-NPRO_TEMP	256
22	H2:PSL-EOM_F	16384
23	H2:PSL-NPRO_PZT	16384
24	H2:PSL-PWR_1	16384
25	H2:PSL-PWR_2	16384
26		
27		
28	H2:PSL-PMC_I	16384
29	H2:PSL-PMC_L	2048
30	H2:GDS-GPS_RAMP2	16384
31	H2:GDS-GPS_TRIG2	16384
TOTAL (BTYES/SEC)		459264

Rack 2X5
Rack 2X6



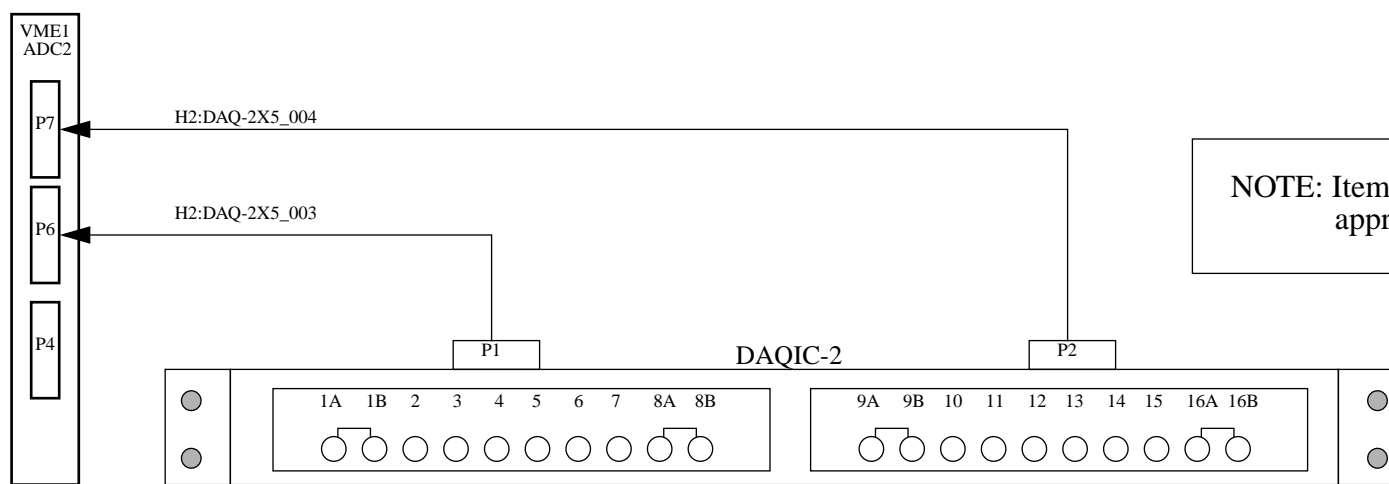
NOTE: Cable connect details TBD pending design of CDS connecting electronics.

NOTE: Items on this page are preliminary and not yet approved for installation.

				UNLESS OTHERWISE SPECIFIED DIMENSIONS ARE IN INCHES TOLERANCES: FRACTIONAL ± ANGULAR ± BEND ± TWO PLACE DECIMAL ± THREE PLACE DECIMAL ± FINISHED SURFACE RMS BREAK CORNERS IN OUT, REMOVE ALL BURRS				CURRENT REVISION APPROVAL				LIGO CALIFORNIA INSTITUTE OF TECHNOLOGY MASSACHUSETTS INSTITUTE OF TECHNOLOGY			
				DO NOT SCALE THIS DRAWING				DRAWN R. Bork				GROUP SIGNATURE DATE 2/24/99			
				USED ON:				CHECKED				Hanford CDS Rack Layout - 2X5 DAQIC-1 Connections			
DWG. NO.				DESCRIPTION				REV				SCALE			
REFERENCE DRAWINGS				NEXT ASS'Y:				SHEETS EFFECTED				DATE			
6				5				4				3			
								ISSUE DESCRIPTION				D990016-00-C			
								DEC				3 of 10			
												VER: 01			

ADC-2

Chan	Name	Rate
00	H2:ASC-WFS1_DCP	256
01	H2:ASC-WFS1_DCY	256
02	H2:ASC-WFS2_DCP	256
03	H2:ASC-WFS2_DCY	256
04	H2:ASC-WFS3_DCP	2048
05	H2:ASC-WFS3_DCY	2048
06	H2:ASC-WFS4_DCP	2048
07	H2:ASC-WFS4_DCY	2048
08	H2:ASC-WFS5_DCP	256
09	H2:ASC-WFS5_DCY	256
10	H2:LSC-AS1_Q	2048
11	H2:LSC-AS1_I	2048
12	H2:LSC-AS2_Q	2048
13	H2:LSC-AS2_I	2048
14	H2:LSC-AS3_Q	2048
15	H2:LSC-AS3_I	2048
16	H2:LSC-AS4_Q	2048
17	H2:LSC-AS4_I	2048
18	H2:LSC-AS_AC	16384
19	H2:LSC-POBS_DC	256
20	H2:LSC-POY_AC	16384
21	H2:LSC-POY_DC	256
22	H2:LSC-AS1_DC	256
23	H2:LSC-AS2_DC	256
24	H2:LSC-AS3_DC	256
25	H2:LSC-AS4_DC	256
26	H2:LSC-REF_AC	256
27	H2:LSC-REF_DC	16384
28	H2:LSC-MC_AO	16384
29	H2:LSC-MC_L	256
30	H2:LSC-POX_DC	256
31	H2:LSC-MOD_AC	16384
TOTAL (BTYES/SEC)		220652



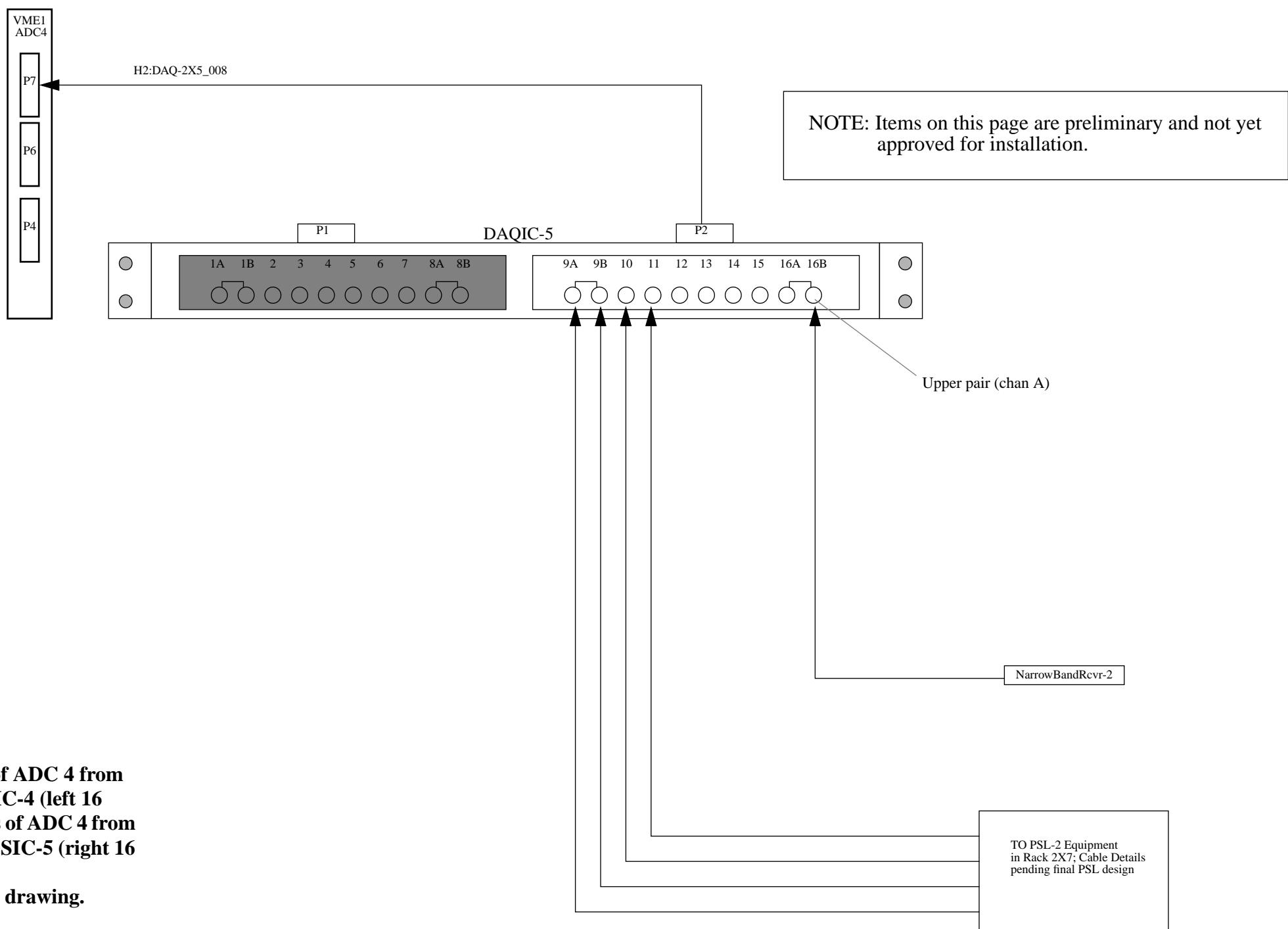
NOTE: Items on this page are preliminary and not yet approved for installation.

NOTE: Cable connect details TBD pending design of CDS connecting electronics.

				UNLESS OTHERWISE SPECIFIED DIMENSIONS ARE IN INCHES TOLERANCES: FRACTIONAL ± ANGULAR RACH ± BEND ± TWO PLACE DECIMAL ± THREE PLACE DECIMAL ± FINISHED SURFACE RMS BREAK CORNERS ON REMOVE ALL BURRS				CURRENT REVISION APPROVAL				LIGO CALIFORNIA INSTITUTE OF TECHNOLOGY MASSACHUSETTS INSTITUTE OF TECHNOLOGY			
				DO NOT SCALE THIS DRAWING				DRAWN R. Bork				GROUP			
				USED ON:				CHECKED				SIGNATURE			
				NEXT ASS'Y:				DATE				DATE 2/24/99			
DWG. NO.				DESCRIPTION				REV				DESCRIPTION			
REFERENCE DRAWINGS				SHEETS EFFECTED				DATE				SCALE			
6				5				4				3			
												SCALE			
												SIZE DWG. NO.			
												B D990016-00-C			
												SHEET 4 of 10			
												STD			
												VER. 01			

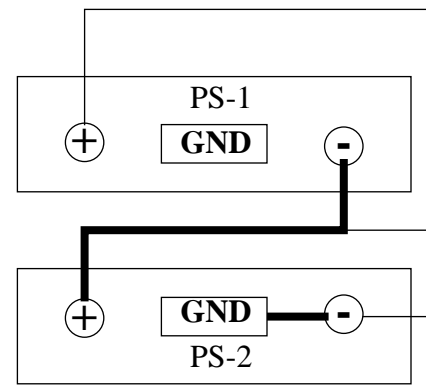
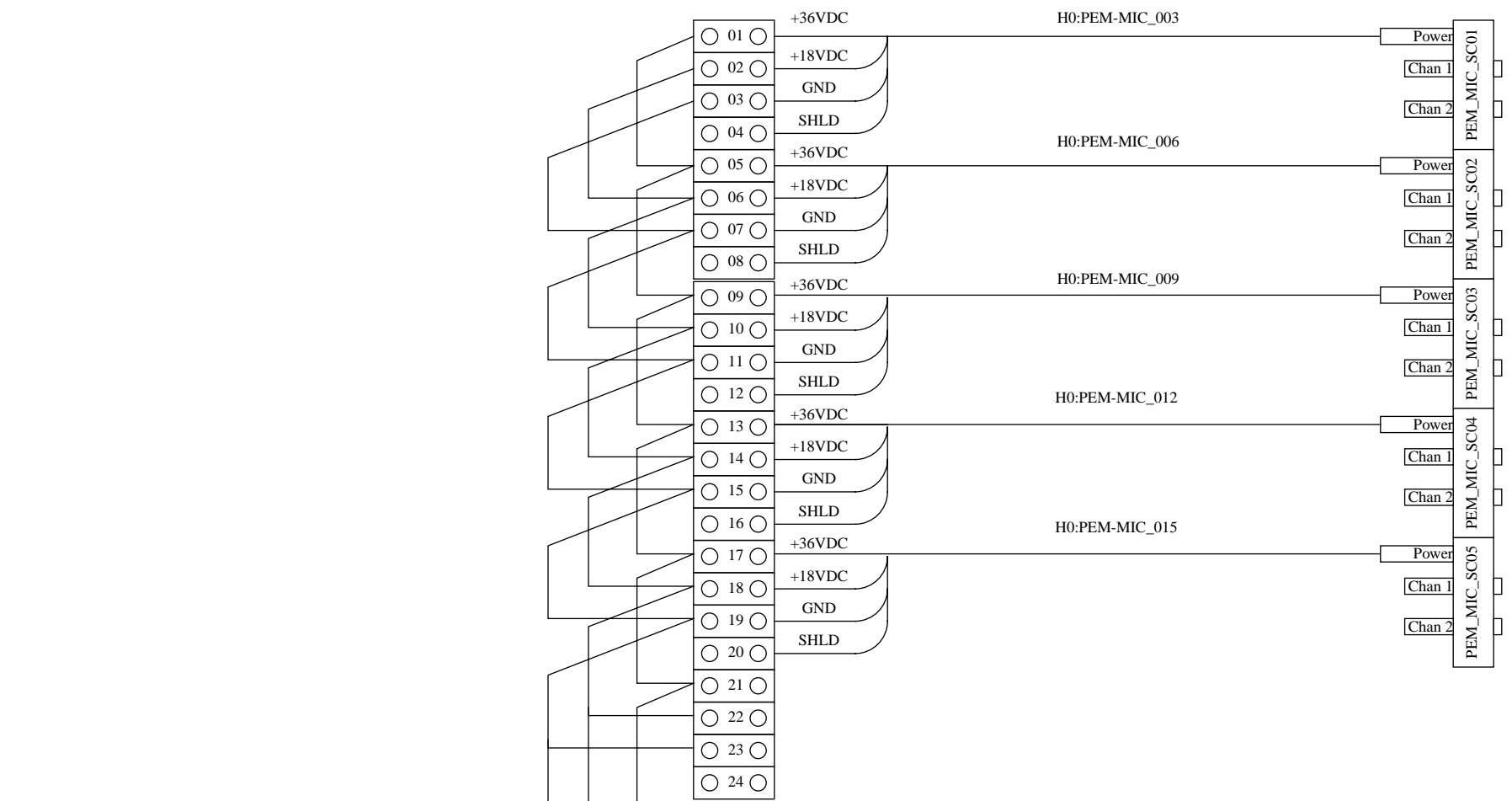
ADC-4

Chan	Name	Rate
00	H0:PEM-PSL2_MIC	2048
01	H0:PEM-HAM7_MIC	2048
02	H0:PEM-HAM8_MIC	2048
03	H0:PEM-HAM9_MIC	2048
04	H0:PEM-HAM10_MIC	2048
05	H0:PEM-BSC4_MIC	2048
06	H0:PEM-BSC7_MIC	2048
07	H0:PEM-BSC3_MIC	2048
08	H0:PEM-BSC8_MIC	2048
09	H0:PEM-BSC1_MIC	2048
10	H0:PEM-LVEA_TILTX	256
11	H0:PEM-LVEA_TILTY	256
12	H0:PEM-LVEA_SEISX	256
13	H0:PEM-LVEA_SEISY	256
14	H0:PEM-LVEA_SEISZ	256
15	H0:PEM-LVEA_TEMP6	256
16	H2:PSL-PWR_MC1	16384
17	H2:PSL-PWR_MC2	16384
18	H2:PSL-REFCAV_DC	256
19	H2:PSL-REFCAV_TRANS	256
20	H2:PSL-PMC_DC	256
21	H2:PSL-PMC_TRANS	256
22		
23		
24		
25		
26		
27		
28		
29		
30		
31	HPEM-NBR_2K	16384
TOTAL (BTYES/SEC)		144384



NOTE: first 16 channels of ADC 4 from BNC Interconnect DAQSIC-4 (left 16 chans). Upper 16 channels of ADC 4 from LEMO Interconnect DAQSIC-5 (right 16 chans). See previous page for BNC drawing.

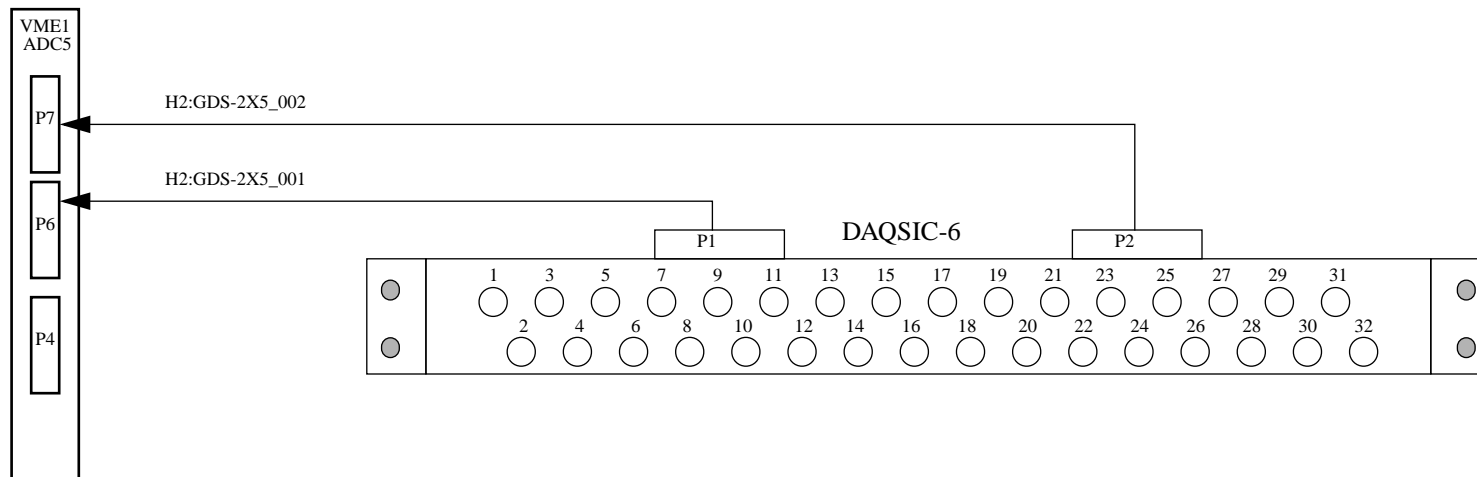
				UNLESS OTHERWISE SPECIFIED DIMENSIONS ARE IN INCHES TOLERANCES: FRACTIONAL ± ANGULAR MACH ± BEND ± TWO PLACE DECIMAL ± THREE PLACE DECIMAL ± FINISHED SURFACE RMS BREAK CORNERS ON OUT. REMOVE ALL BURRS				CURRENT REVISION APPROVAL				LIGO CALIFORNIA INSTITUTE OF TECHNOLOGY MASSACHUSETTS INSTITUTE OF TECHNOLOGY			
				DO NOT SCALE THIS DRAWING				DRAWN: R. Bork				GROUP: SIGNATURE: DATE: 2/24/99			
				USED ON:				CHECKED:				Hanford CDS Rack Layout - 2X5 DAQIC-5 Connections			
DWG. NO.				DESCRIPTION				DWG. NO.				DESCRIPTION			
6				5				4				3			
REFERENCE DRAWINGS				NEXT ASS'Y:				REV				DESCRIPTION			
								SHEETS EFFECTED				DATE			
								ISSUE DESCRIPTION				SCALE			
								DWG. NO.				D990016-00-C			
								SCALE				SHEET 7 of 10			
								STD				VER: 01			



				UNLESS OTHERWISE SPECIFIED DIMENSIONS ARE IN INCHES TOLERANCES: FRACTIONAL ± ANGULAR RACH ± BEND ± TWO PLACE DECIMAL ± THREE PLACE DECIMAL ± FINISHED SURFACE RMS BREAK CORNERS IN OUT. REMOVE ALL BURRS				CURRENT REVISION APPROVAL				LIGO CALIFORNIA INSTITUTE OF TECHNOLOGY MASSACHUSETTS INSTITUTE OF TECHNOLOGY			
								DRAWN R. Bork				SIGNATURE			
								CHECKED				DATE 2/24/99			
				DO NOT SCALE THIS DRAWING				REV				DESCRIPTION			
DWG. NO.				DESCRIPTION				SHEETS EFFECTED				DATE			
REFERENCE DRAWINGS				USED ON:				ISSUE DESCRIPTION				SCALE			
6				5				4				3			
				NEXT ASS'Y:				DEC				SCALE			
												SHEET 8 of 10			
												D990016-00-C			
												VER. 01			

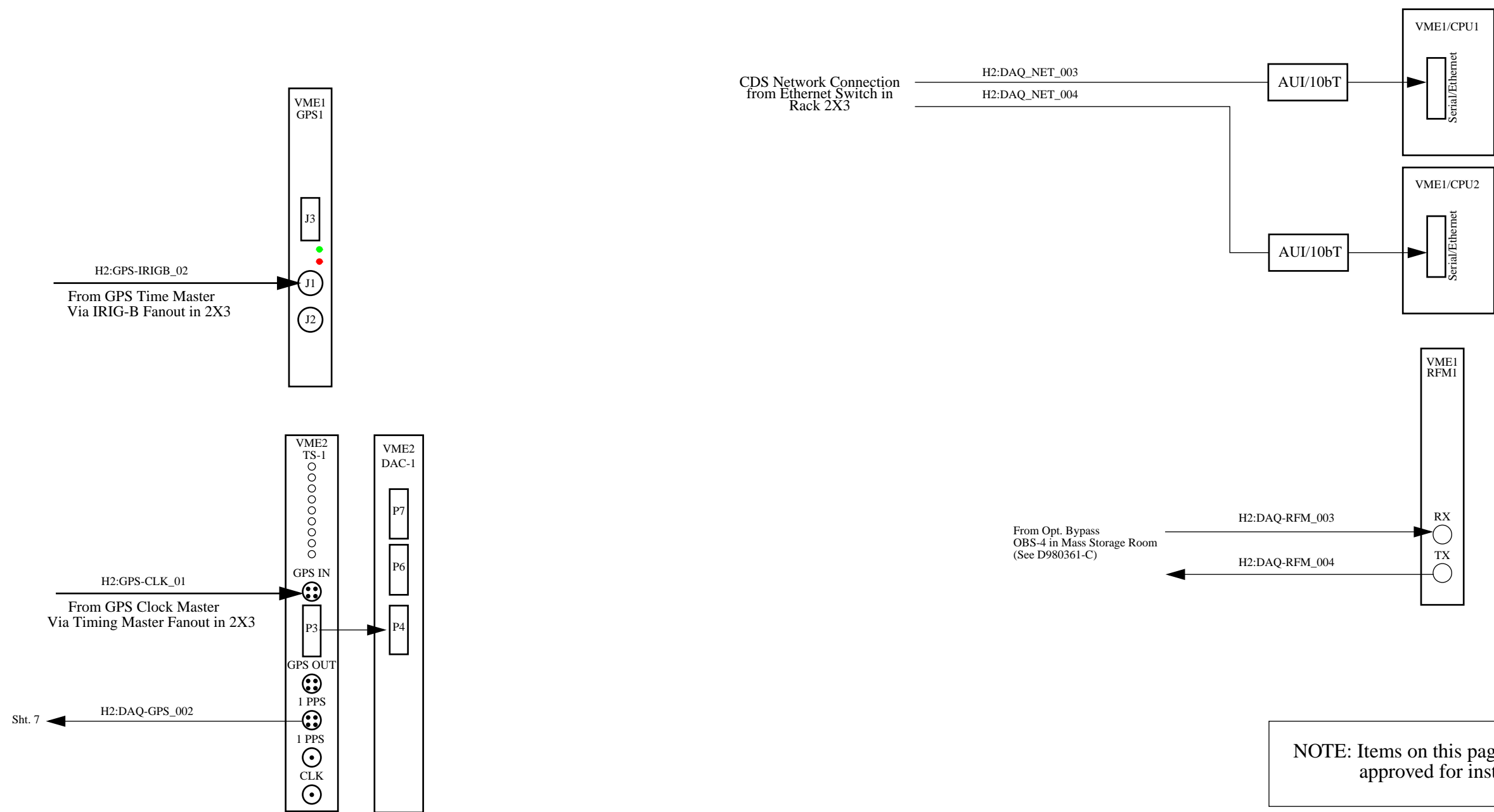
ADC-5

Chan	Name	Rate
00	H2:GDS-DAC1	16384
01	H2:GDS-DAC2	16384
02	H2:GDS-LVEA2_TO1	16384
03	H2:GDS-LVEA2_TO2	16384
04	H2:GDS-LVEA2_TO3	16384
05	H2:GDS-LVEA2_TO4	16384
06	H2:GDS-LVEA2_TO5	2048
07	H2:GDS-LVEA2_TO6	2048
08	H2:GDS-LVEA2_TO7	2048
09	H2:GDS-LVEA2_TO8	2048
10	H2:GDS-LVEA2_TO9	2048
11	H2:GDS-LVEA2_T10	2048
12	H2:GDS-LVEA2_T11	2048
13	H2:GDS-LVEA2_T12	2048
14	H2:GDS-LVEA2_T13	2048
15	H2:GDS-LVEA2_T14	2048
16	H2:GDS-LVEA2_T15	2048
17	H2:GDS-LVEA2_T16	2048
18	H2:GDS-LVEA2_T17	2048
19	H2:GDS-LVEA2_T18	2048
20	H2:GDS-LVEA2_T19	2048
21	H2:GDS-LVEA2_T20	2048
22		
23		
24		
25		
26		
27		
28		
29		
30		
31		
TOTAL (BTYES/SEC)		262144



NOTE: Items on this page are preliminary and not yet approved for installation.

				UNLESS OTHERWISE SPECIFIED DIMENSIONS ARE IN INCHES TOLERANCES: FRACTIONAL ± ANGULAR ± BEND ± TWO PLACE DECIMAL ± THREE PLACE DECIMAL ± FINISHED SURFACE RMS BREAK CORNERS IN OUT REMOVE ALL BURRS				CURRENT REVISION APPROVAL				LIGO CALIFORNIA INSTITUTE OF TECHNOLOGY MASSACHUSETTS INSTITUTE OF TECHNOLOGY			
				DO NOT SCALE THIS DRAWING				DRAWN: R. Bork				GROUP: SIGNATURE: DATE: 2/24/99			
				USED ON:				CHECKED:				Hanford CDS Rack Layout - 2X5 DAQSC-6 Connections			
DWG. NO.				DESCRIPTION				DWG. NO.				DESCRIPTION			
REFERENCE DRAWINGS				NEXT ASS'Y:				REV				DESCRIPTION			
								SHEETS EFFECTED				DATE			
								ISSUE DESCRIPTION				SCALE			
								DWG. NO.				REV.			
								SCALE				SHEET 9 of 10			
								SCALE				STD			
												VER. 01			



NOTE: Items on this page are preliminary and not yet approved for installation.

				UNLESS OTHERWISE SPECIFIED DIMENSIONS ARE IN INCHES TOLERANCES: FRACTIONAL ± ANGULAR RACH ± BEND ± TWO PLACE DECIMAL ± THREE PLACE DECIMAL ± FINISHED SURFACE RMS BREAK CORNERS IN OUT, REMOVE ALL BURRS		CURRENT REVISION APPROVAL				LIGO CALIFORNIA INSTITUTE OF TECHNOLOGY MASSACHUSETTS INSTITUTE OF TECHNOLOGY			
				DO NOT SCALE THIS DRAWING		DRAWN R. Bork		GROUP		SIGNATURE		DATE 2/24/99	
				USED ON:		CHECKED							
REFERENCE DRAWINGS				NEXT ASS'Y:		SHEETS EFFECTED		DATE		SCALE		SIZE DWG. NO. B D990016-00-C	
DWG. NO.				DESCRIPTION		REV		ISSUE DESCRIPTION		SCALE		SHEET 10 of 10 STD	
6				5		4		3		2		1	