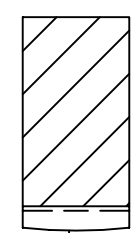
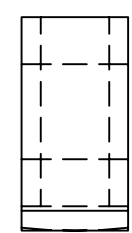
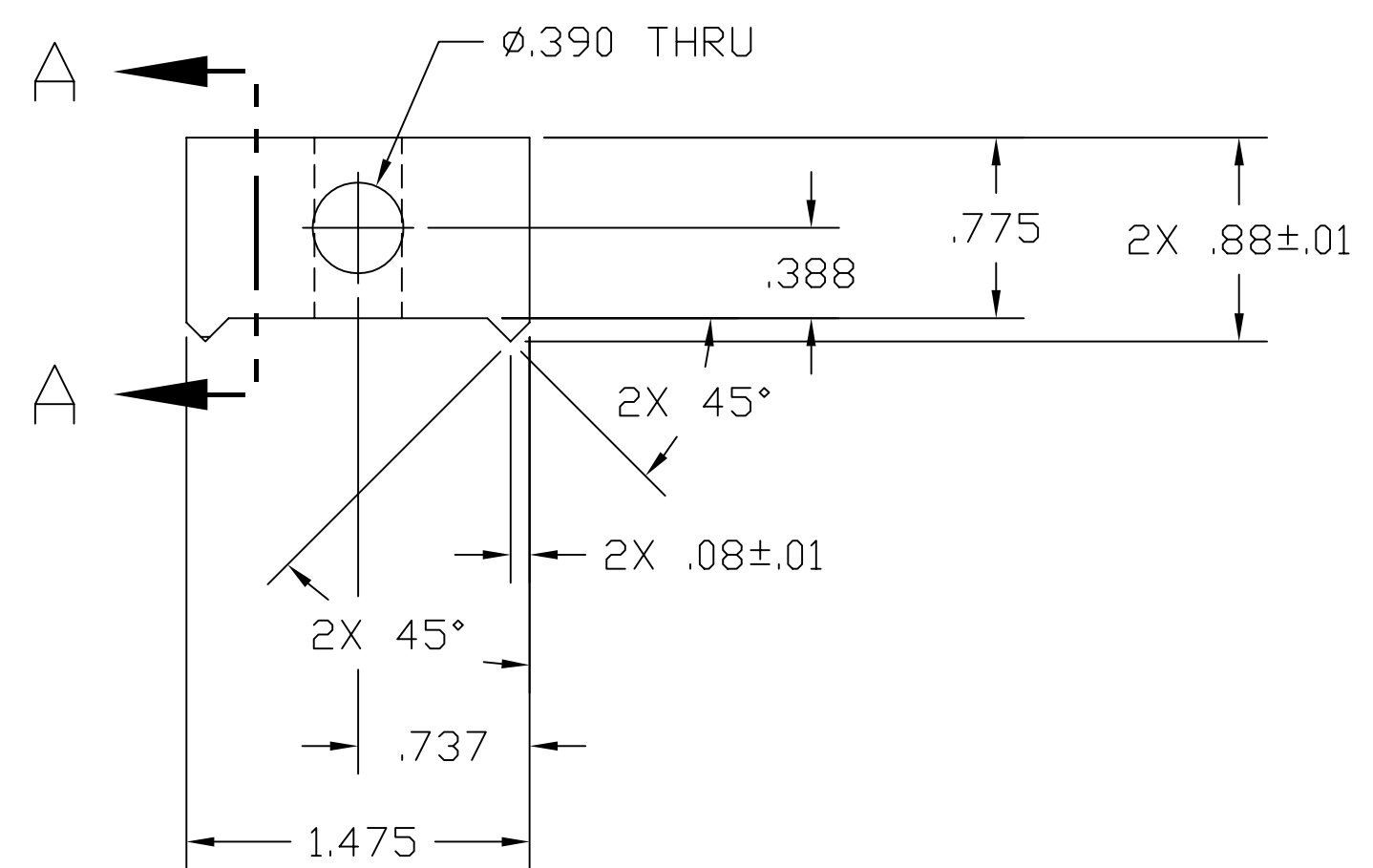
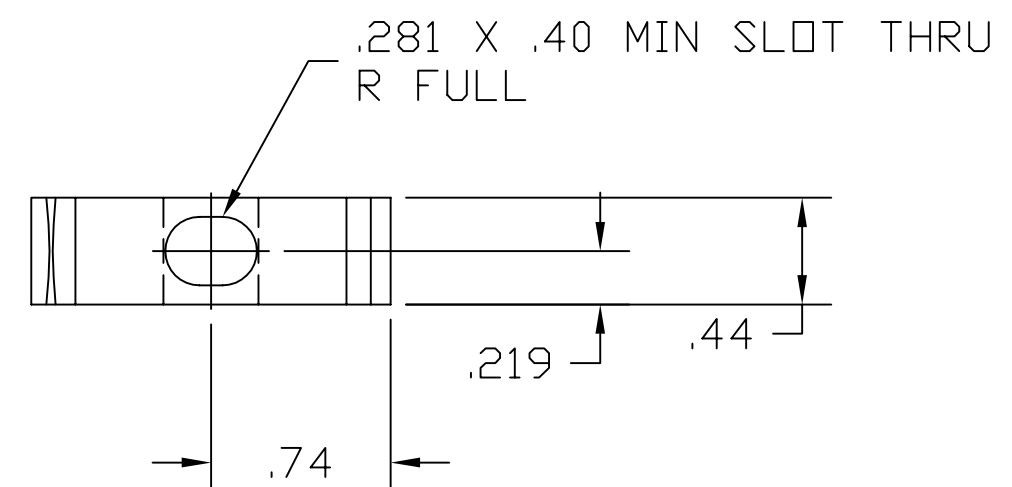


NOTES: (UNLESS OTHERWISE SPECIFIED)  
 1. .02 MAX FLAT AT MIDPOINT OF RADIUS.  
 2. ALL MACHINING FLUIDS SHALL BE WATER SOLUBLE AND FREE OF SULFUR, CHLORINE, AND SILICONE; SUCH AS CINCINNATI MILACRON'S CIMTECH 410 (STAINLESS STEEL).



R2.00 MAX  $\triangle 1$

SECTION A-A



		UNLESS OTHERWISE SPECIFIED DIMENSIONS ARE IN INCHES						LIGO CALIFORNIA INSTITUTE OF TECHNOLOGY MASSACHUSETTS INSTITUTE OF TECHNOLOGY	
		TOLERANCES: FRACTIONAL $\pm$ ANGULAR $\pm 1'$ ANGULAR MACH $\pm$ BEND $\pm$ TWO PLACE DECIMAL $\pm .03$		THREE PLACE DECIMAL $\pm .005$ FINISHED SURFACE RMS BREAK CORNERS IN: .005-.010 REMOVE ALL BURRS					
		MATERIAL: 300 SERIES STAINLESS STEEL	HEAT TREAT:	FINISH:	A	DCN E990107	CONLEY	1-18-99	
DWG. NO.	DESCRIPTION	USED ON:	NEXT ASS'Y: D990002	REV	DESCRIPTION	DRWN	DATE	CHECK	DATE
	REFERENCE DRAWINGS				ISSUE DESCRIPTION				
								CAD FILE D990004-A.dwg	SIZE DWG. NO. B D990004-A
								SCALE NTS	SHEET 1 OF 1