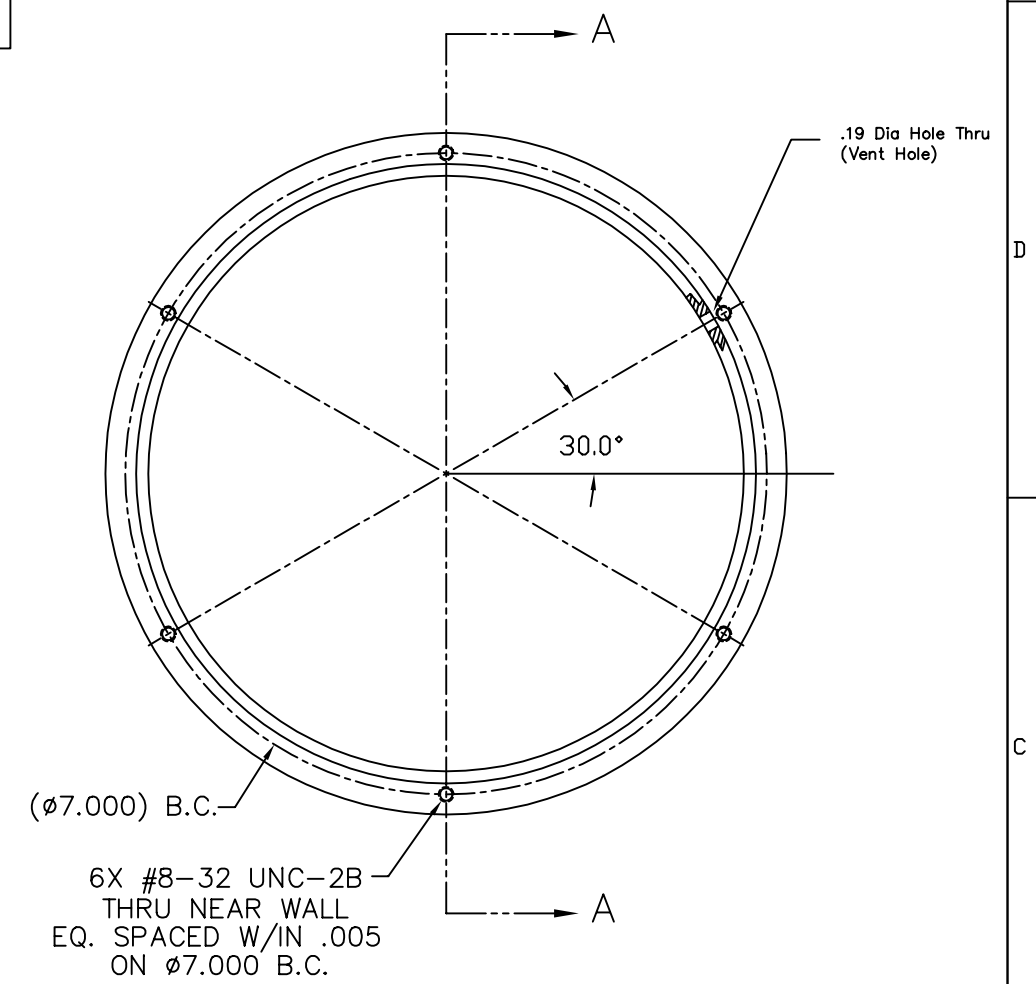
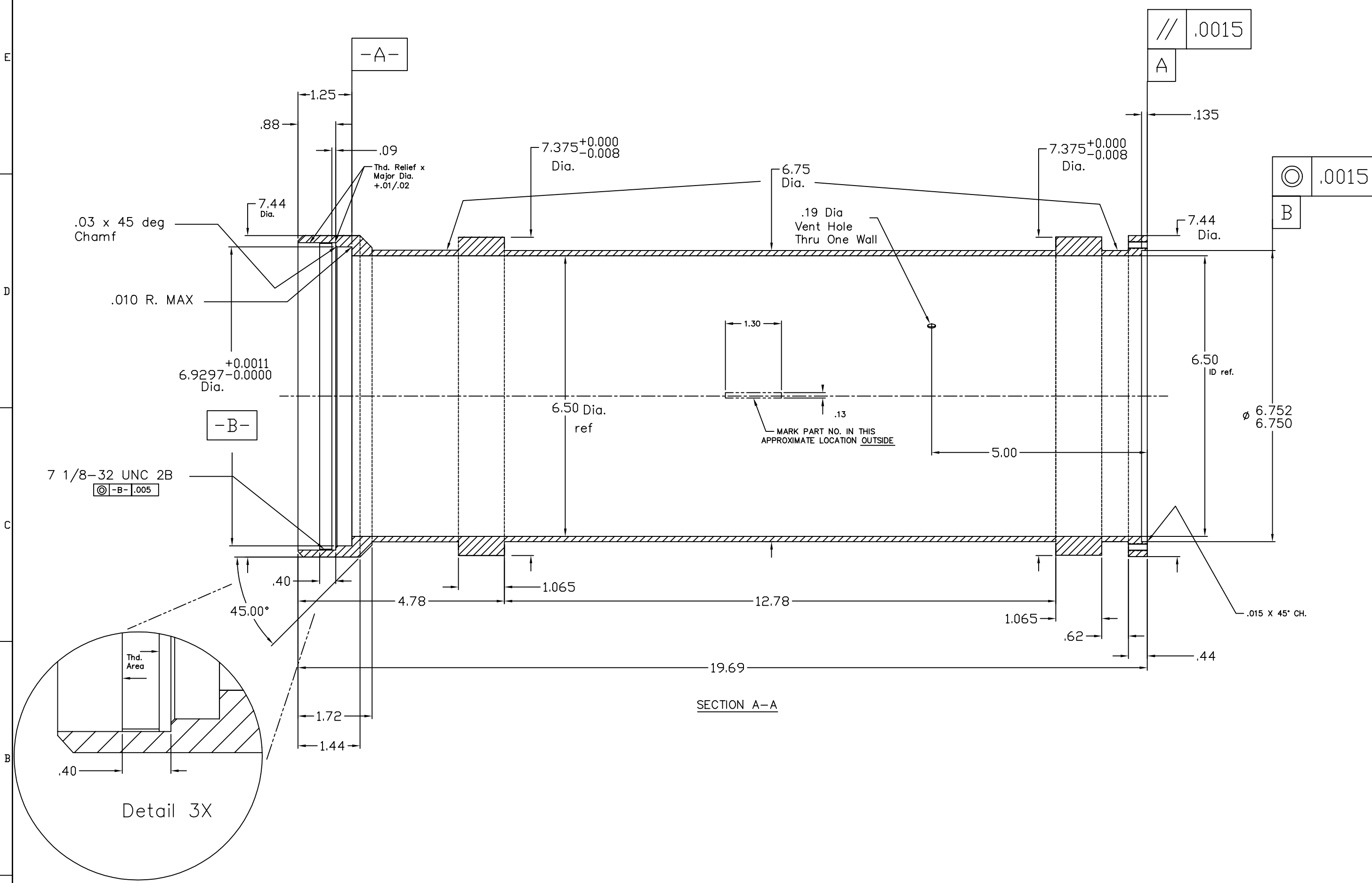


NOTES: (UNLESS OTHERWISE SPECIFIED)
 1. MAKE FROM 7-1/2 O.D. (or larger) X 6-1/2 I.D. 6061-T6 ALUM TUBE

~~Liquid contaminants/Machining Lubricants
 Liquids containing hydrocarbons or other contaminants, other than the machining fluids specified herein, shall not be allowed to come into contact with suspension material at any time. All machining fluids shall be water soluble and free of sulfur, chlorine and silicone; such as Cincinnati Milacron's Cimtech 410 (stainless steel).~~

Identification Serial Number
 A serial number shall be etched, or scribed on the part see note drawing note.
Serial Number Format
 The Serial number shall be of the format: D99xxxx-x-001
 Example: D990021-A-001
 The drawing number, The revision number, The sequential part number



ref. 1 per assembly

REF		QTY	PART or DRWG No.	DESCRIPTION	MATERIAL
PARTS and MATERIAL LIST					
UNLESS OTHERWISE SPECIFIED DIMENSIONS ARE IN INCHES					
TOLERANCES:		THREE PLACE DECIMAL ± .005			
FRACTIONAL ± 1/16		FINISHED SURFACE RMS 63			
ANGULAR ± .25°		BREAK CORNERS IN .015 OUT .015			
ANGULARMAGN ± BEND		REMOVE ALL BURRS			
TWO PLACE DECIMAL ± .01					
MATERIAL:		HEAT TREAT:		FINISH:	
SEE NOTES		T-6			
DWG. NO.	DESCRIPTION	USED ON: XXX	NEXT ASS'Y: XXX	REV	DESCRIPTION
8	REFERENCE DRAWINGS	7	6	5	4
			ISSUE DESCRIPTION		
			DCN NUMBER		
			APPR'D CHECK DRWN DATE		
			SCALE 1 : 1		
			SHEET 1 OF 1		

LIGO CALIFORNIA INSTITUTE OF TECHNOLOGY
 MASSACHUSETTS INSTITUTE OF TECHNOLOGY

TUBE, MAIN
 BODY, ETM

CAD FILE: D980636-B.DWG
 SIZE: E
 DWG. NO.: D980636-B
 SHEET: 1 OF 1