

NOTES: (UNLESS OTHERWISE SPECIFIED)

Liquid contaminants/Machining Lubricants
 Liquids containing hydrocarbons or other contaminants, other than the machining fluids specified herein, shall not be allowed to come into contact with suspension material at any time. All machining fluids shall be water soluble and free of sulfur, chlorine and silicone; such as Cincinnati Milacron's Cimtech 410 (stainless steel).

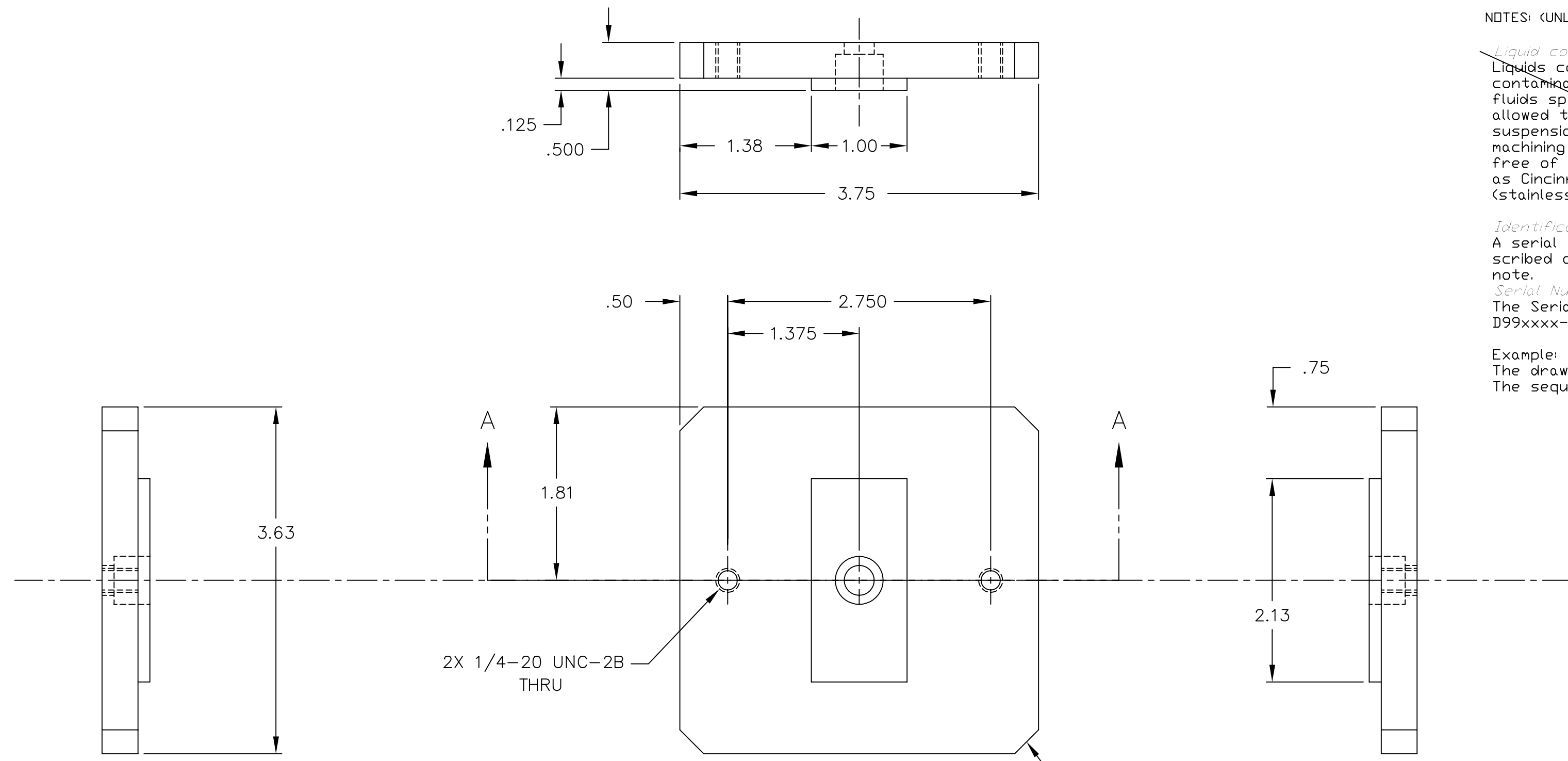
Identification Serial Number

A serial number shall be etched, or scribed on the part see note drawing note.

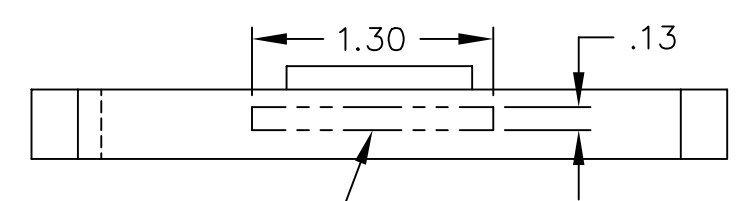
Serial Number Format

The Serial number shall be of the format: D99xxxx-x-001

Example: D990021-A-001
 The drawing number, The revision number, The sequential part number

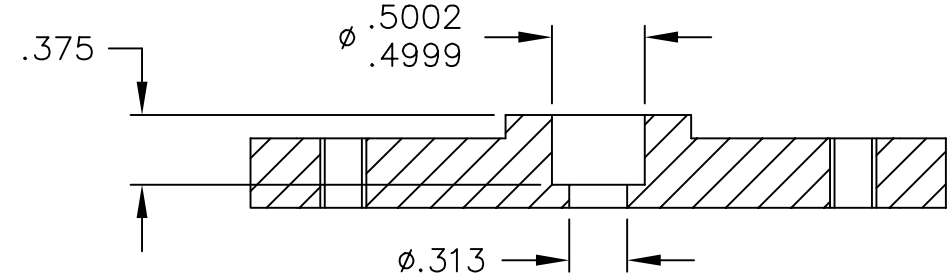


2X 1/4-20 UNC-2B THRU



MARK PART NO. IN THIS APPROXIMATE LOCATION

Light Press Fit For std 1/2 dia. Dowel Part # D-980582-C



SECTION A-A

ref. make 2 per assembly

REF	QTY	PART or DRWG No.	DESCRIPTION	MATERIAL
PARTS and MATERIAL LIST				
C			Modified .5" bore callout	KENM 8-8-99
B			FOR FABRICATION	KENM 6-8-99
00			PRE-RELEASE	CHAPUT 11-3-98
REV		DESCRIPTION	DCN NUMBER	APPR'D CHECK DRWN DATE
			ISSUE DESCRIPTION	SCALE 1 : 1 SHEET 1 OF 1

UNLESS OTHERWISE SPECIFIED DIMENSIONS ARE IN FEET (cm)			
TOLERANCES: FRACTIONAL ± 1/16 ANGULAR ± .25° ANGULAR RADIUS ± BEND ± TWO PLACE DECIMAL ± .01		THREE PLACE DECIMAL ± .005 FINISHED SURFACE RMS 63 BREAK CORNERS IN .015 OUT .015 REMOVE ALL BURRS	
MATERIAL: ALUMINUM TOOLING PLATE	HEAT TREAT: /	FINISH: /	
USED ON: XXX	NEXT ASS'Y: XXX		

LIGO CALIFORNIA INSTITUTE OF TECHNOLOGY
 MASSACHUSETTS INSTITUTE OF TECHNOLOGY

PLATE, VERT. LOCK/
 PIVOT, REAR SUPPORT

CAD FILE: D980564-C SIZE: C DWG. NO.: D980564-C