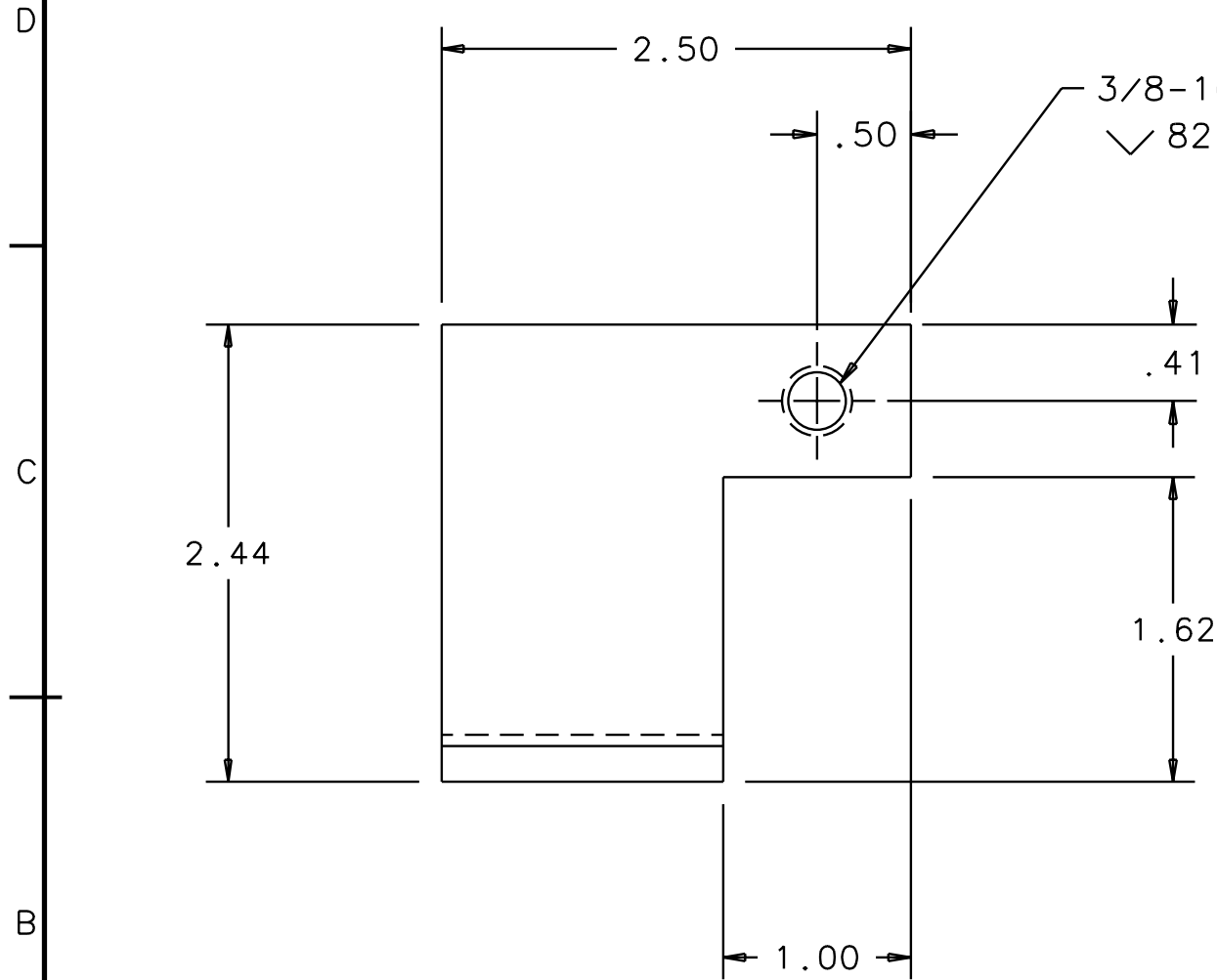


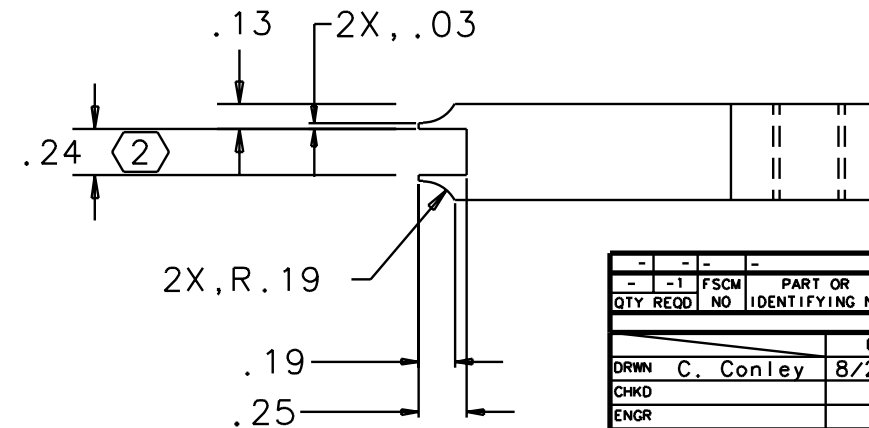
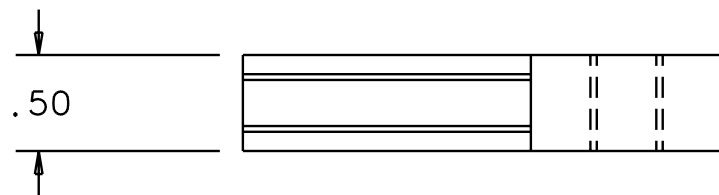
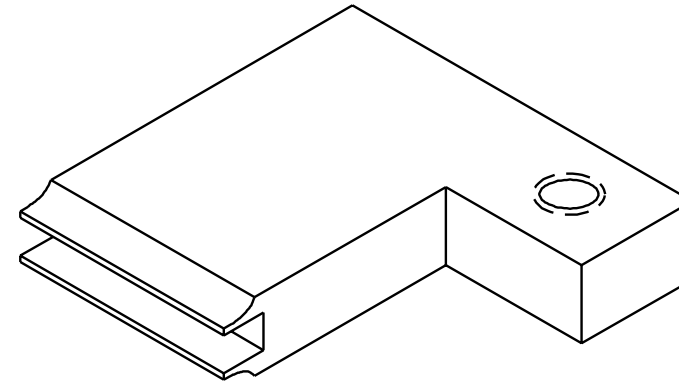
NOTES: (UNLESS OTHERWISE SPECIFIED)
 1. BREAK ALL SHARP EDGES.

2. CHAMFER INSIDE SLOT AS REQUIRED FOR WELDING ON NEXT ASSEMBLY.

REV	DATE	DRAWN BY	CHECKED	DCC	DCN/DESCRIPTION
A	8/28/98	C. Conley			E980218-00/INITIAL RELEASE
B	12/18/01	J. Romie			E010369/ADD J PREP



3/8-16 UNC-2B THRU
 √ 82°-100° X ϕ .50±.01 BS



QTY REQD	FSCM NO	PART OR IDENTIFYING NO	PART	NOMENCLATURE OR DISCUSSION	MATERIAL SPECIFICATION	ITEM NO
-	-	-	-	-	304 STAINLESS STEEL	-
PARTS LIST						
DRWN	C. Conley	DATE	8/28/98	CALIFORNIA INSTITUTE OF TECHNOLOGY MASSACHUSETTS INSTITUTE OF TECHNOLOGY		
CHKD		LIGO PROJECT				
ENGR		1-Deas CAD file: D980374_A.dwg dcc file: D980374-A.pdf				
APPD		TITLE				
UNLESS OTHERWISE SPECIFIED: DIMENSION UNITS ARE inch (mm) TOLERANCES ARE: X.XXX: ± 0.005 X.XX: ± 0.01 ANGLES: ± 0.5°				LOS3 SAFETY STOP BRACKET, REAR		
NEXT ASSEMBLY: D970508		SCALE: 1/1	SIZE	DRAWING NUMBER	SHEET	
		B	D980374-B-D	1 of 1		