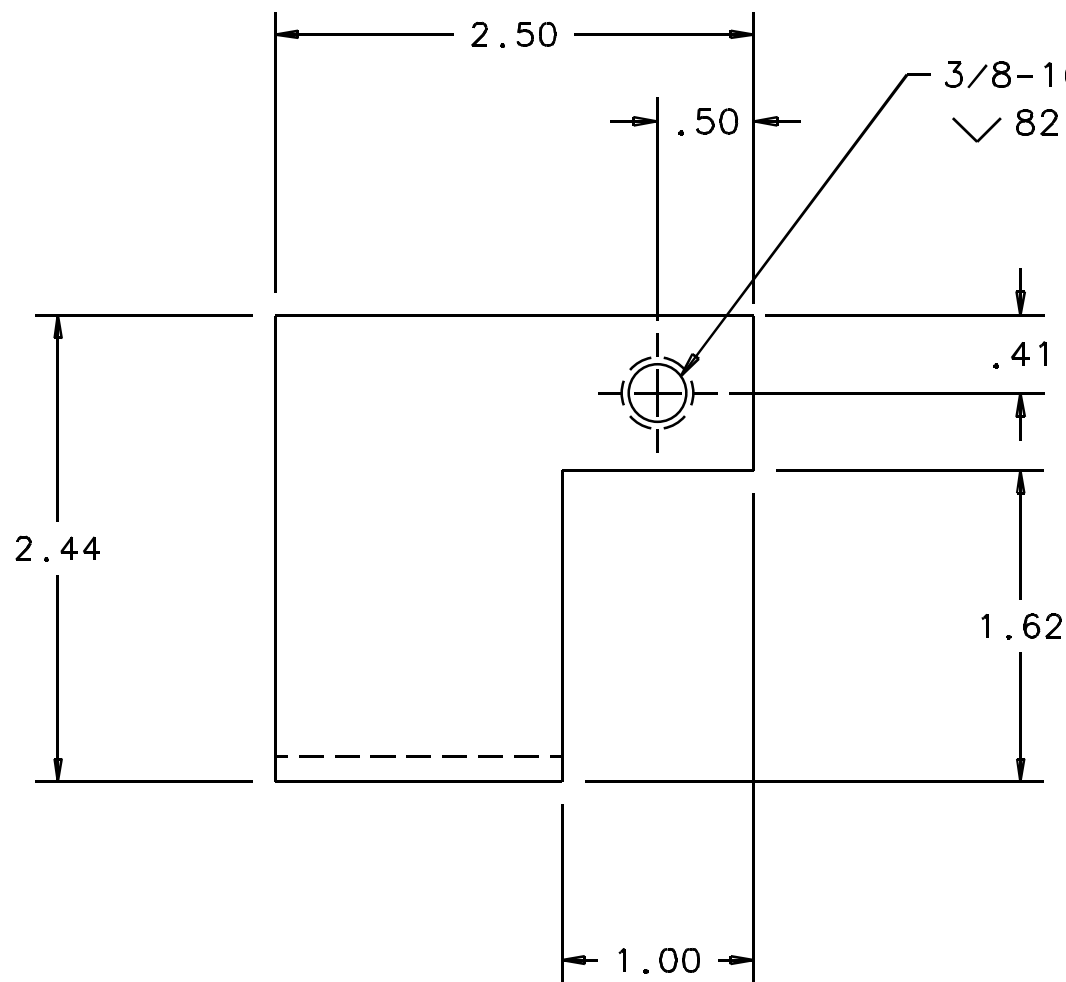


NOTES: (UNLESS OTHERWISE SPECIFIED)

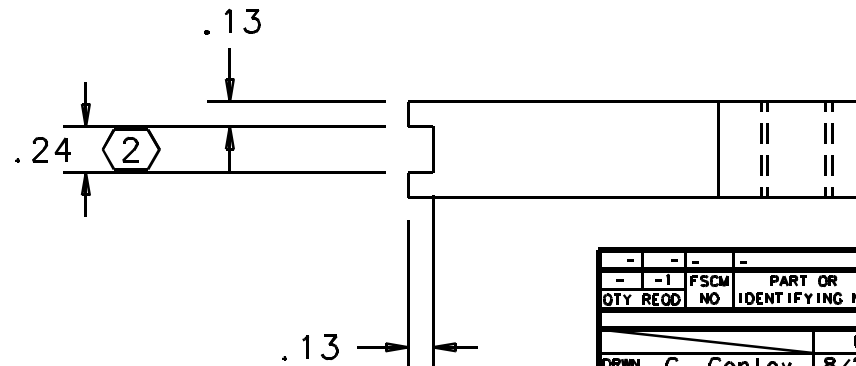
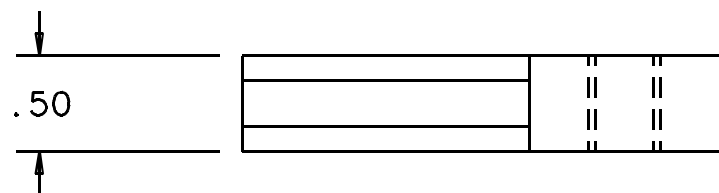
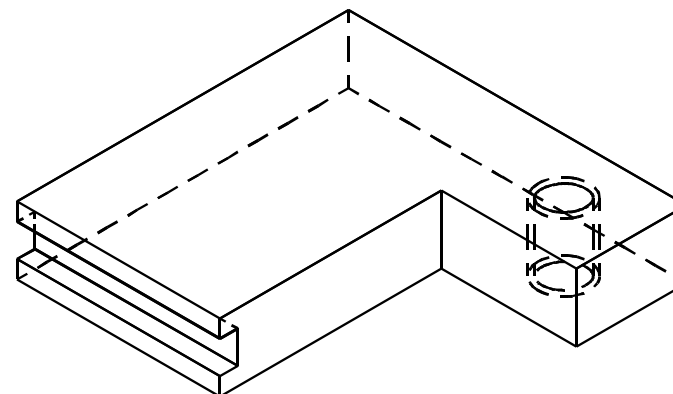
1. BREAK ALL SHARP EDGES.

2. CHAMFER INSIDE SLOT AS REQUIRED FOR WELDING ON NEXT ASSEMBLY.

REV	DATE	DRAWN BY	CHECKED	DCC	DCN/DESCRIPTION
A	8/28/98	C. Conley			E980218-00/INITIAL RELEASE



3/8-16 UNC-2B THRU
 \checkmark 82°-100° X ϕ .50±.01 BS



QTY	REQD	FSCM NO	PART OR IDENTIFYING NO	PART	NOMENCLATURE OR DISCRPTION	MATERIAL SPECIFICATION	ITEM NO
-	-	-	-	-	-	304 STAINLESS STEEL	-

DRWN	C. Conley	DATE	8/28/98	CALIFORNIA INSTITUTE OF TECHNOLOGY MASSACHUSETTS INSTITUTE OF TECHNOLOGY LIGO PROJECT				
CHKD		1-Deas CAD file: D980374_A.dwg						
ENGR		dcc file: D980374-A.pdf						
APPD		TITLE		LOS3 SAFETY STOP BRACKET, REAR				
UNLESS OTHERWISE SPECIFIED: DIMENSION UNITS ARE inch (mm) TOLERANCES ARE: X.XXX: ± 0.005 X.XX: ± 0.01 ANGLES: ± 0.5°								
NEXT ASSEMBLY: D970508				SCALE: 1/1	SIZE DRAWING NUMBER	B	D980374-A-D	SHEET 1 OF 1