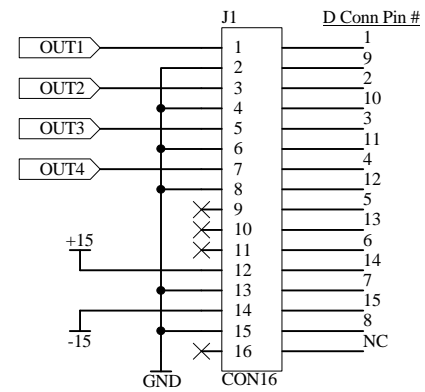
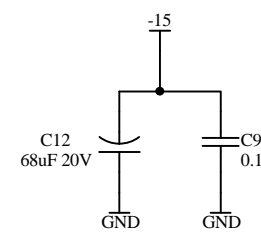
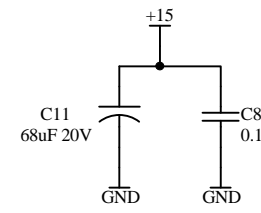
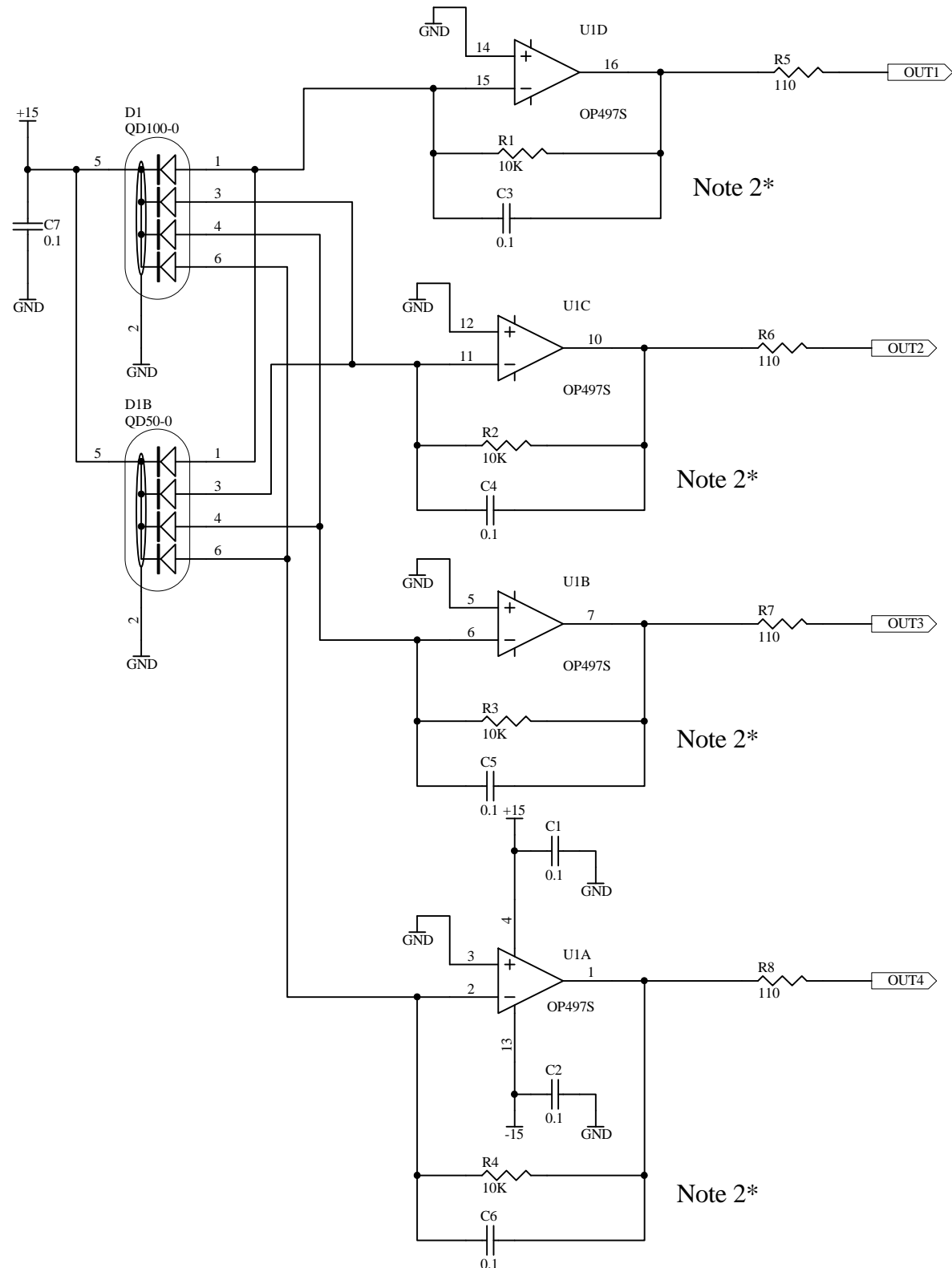


Note: Board is set up to handle either QD100-0 or QD50-0 diodes.



Revision History	
Rev.	Description
B	Add output resistors R5, R6, R7, R8
C	Added QD50-0 diode.
C1	Added note 2.

NOTE 1:  
DB 15 CONNECTOR MOUNTED ON SIDE OF PD BOX.  
CONNECTED TO IDC 16 CONNECTOR MOUNTED ON  
BOARD  
VIA MASS TERMINATION CABLE.

IDC Pin # / D Conn Pin #
1 / 1
2 / 9
3 / 2
4 / 10
5 / 3
6 / 11
7 / 4
8 / 12
9 / 5
10 / 13
11 / 6
12 / 14
13 / 7
14 / 15
15 / 8
16 / NC

Note 2: R and C may be 100K and 2.2nF, respectively, depending on application.