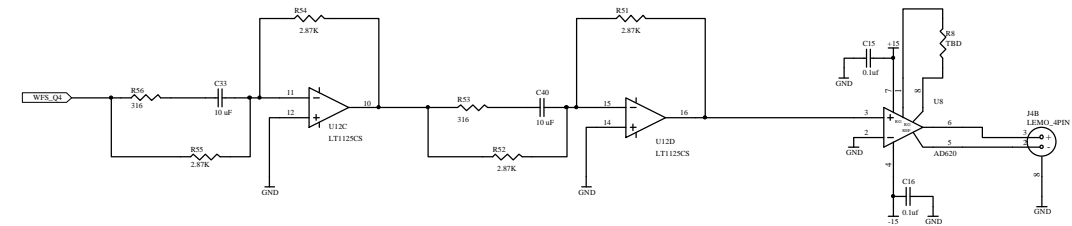
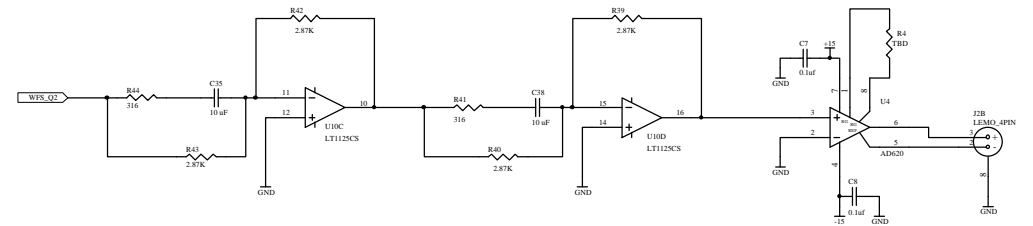
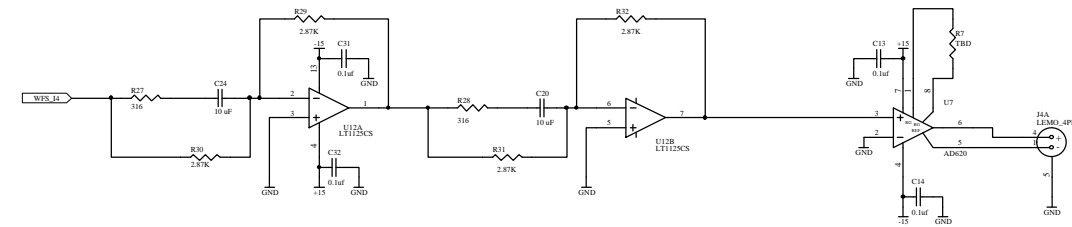
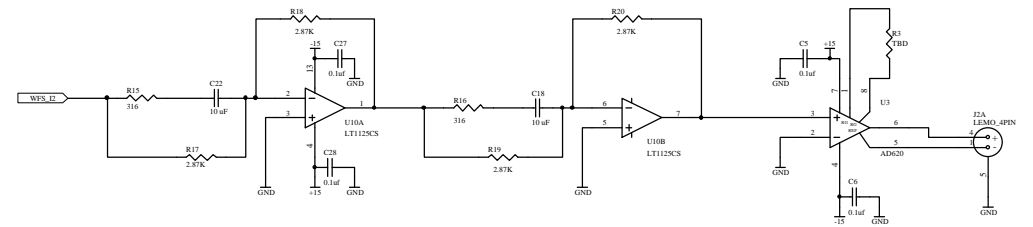
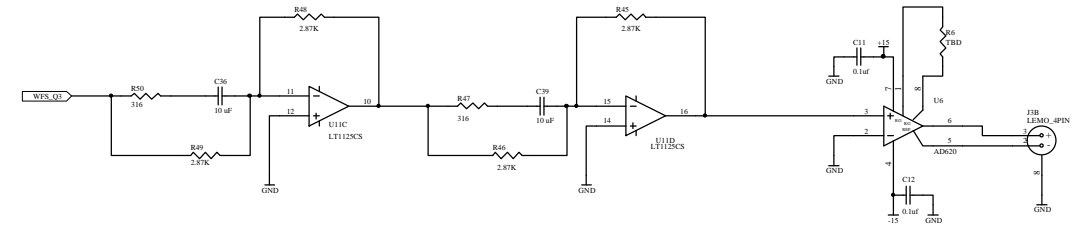
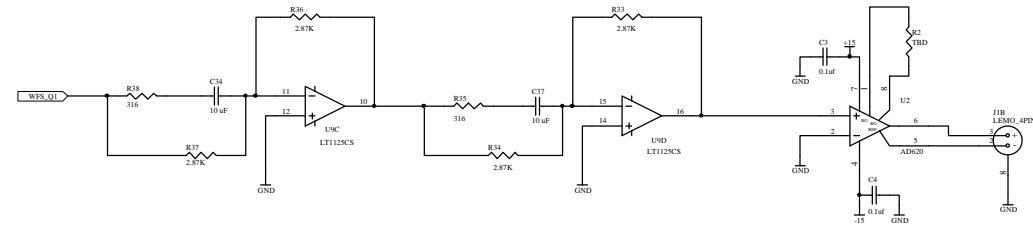
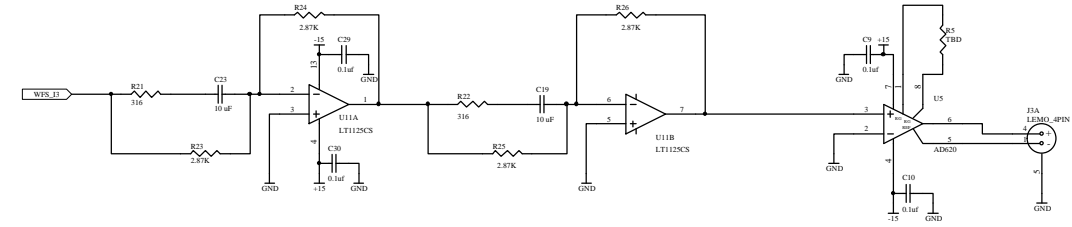
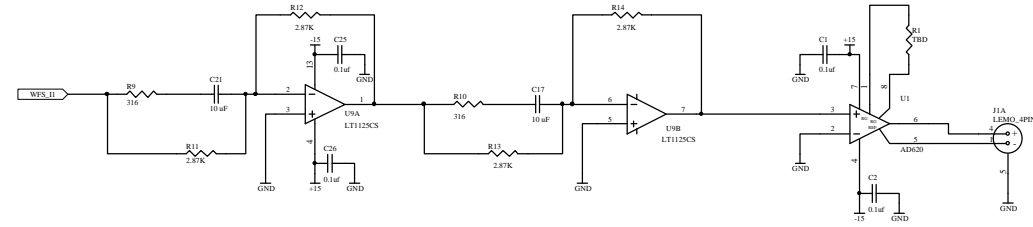
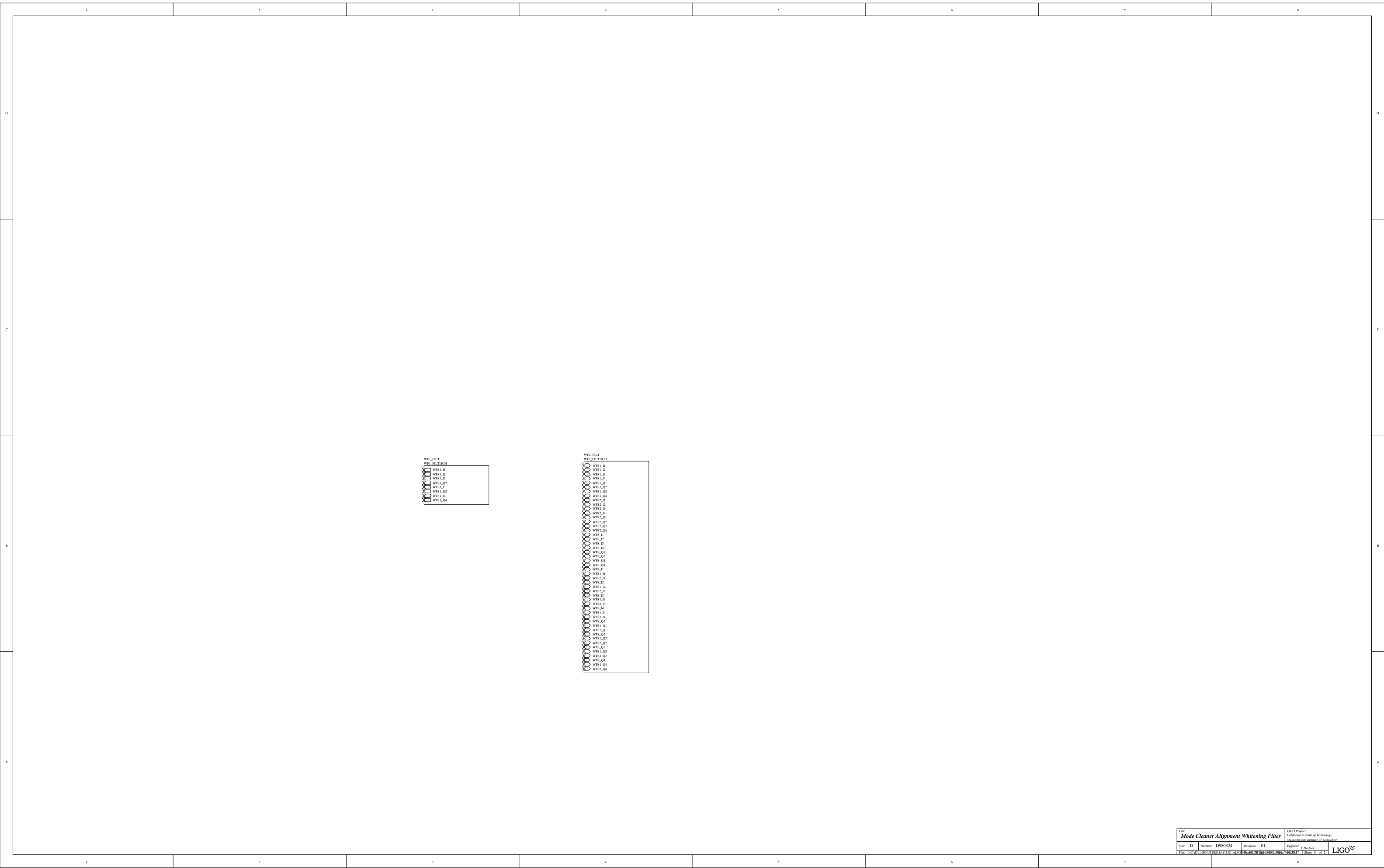


Nominal Whiting is 2ea. 5Hz zeros and 2ea. 50 Hz poles, Gain 1 @ DC.



Note:  
TBD value resistors are omitted from nominal design for voltage gain of 1.





- WF1\_FILT  
WF1\_FILT.SCH
- WFS1\_J1
  - WFS1\_Q0
  - WFS1\_J2
  - WFS1\_Q2
  - WFS1\_J3
  - WFS1\_Q3
  - WFS1\_J4
  - WFS1\_Q4

- WF2\_FILT  
WF2\_FILT.SCH
- WFS1\_J1
  - WFS1\_J2
  - WFS1\_J3
  - WFS1\_J4
  - WFS1\_Q0
  - WFS1\_Q2
  - WFS1\_Q3
  - WFS1\_Q4
  - WFS2\_J1
  - WFS2\_J2
  - WFS2\_J3
  - WFS2\_J4
  - WFS2\_Q0
  - WFS2\_Q2
  - WFS2\_Q3
  - WFS2\_Q4
  - WFS\_J1
  - WFS\_J2
  - WFS\_J3
  - WFS\_J4
  - WFS\_Q0
  - WFS\_Q2
  - WFS\_Q3
  - WFS\_Q4
  - WFS\_J1
  - WFS2\_J1
  - WFS\_J2
  - WFS1\_J2
  - WFS2\_J2
  - WFS\_J3
  - WFS2\_J3
  - WFS\_J4
  - WFS1\_J4
  - WFS2\_J4
  - WFS\_Q0
  - WFS1\_Q0
  - WFS2\_Q0
  - WFS1\_Q2
  - WFS2\_Q2
  - WFS\_Q3
  - WFS1\_Q3
  - WFS2\_Q3
  - WFS\_Q4
  - WFS1\_Q4
  - WFS2\_Q4