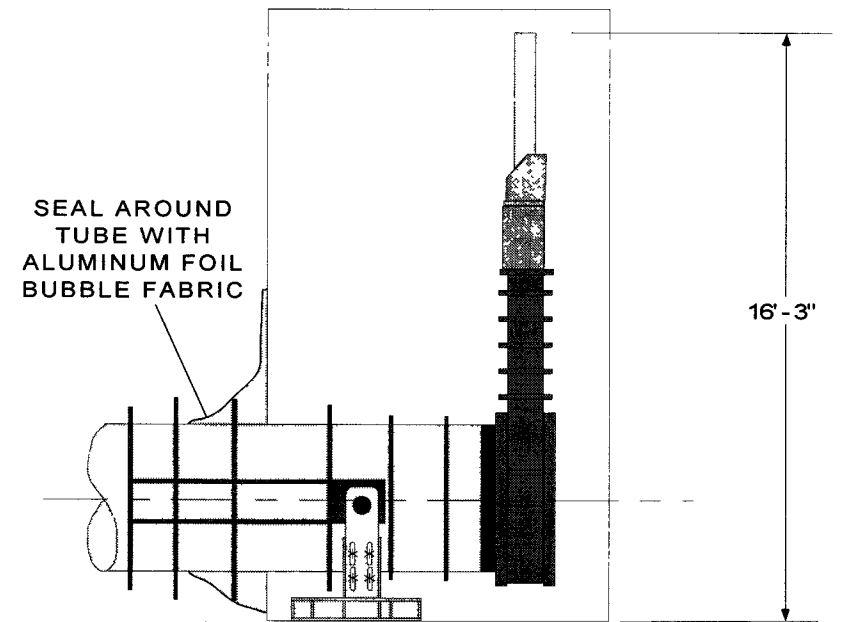


TYPICAL FRAMING DETAIL OF BEAM TUBE PENETRATION WALL

TYPICAL FRAMING DETAIL OF ALL OTHER WALLS

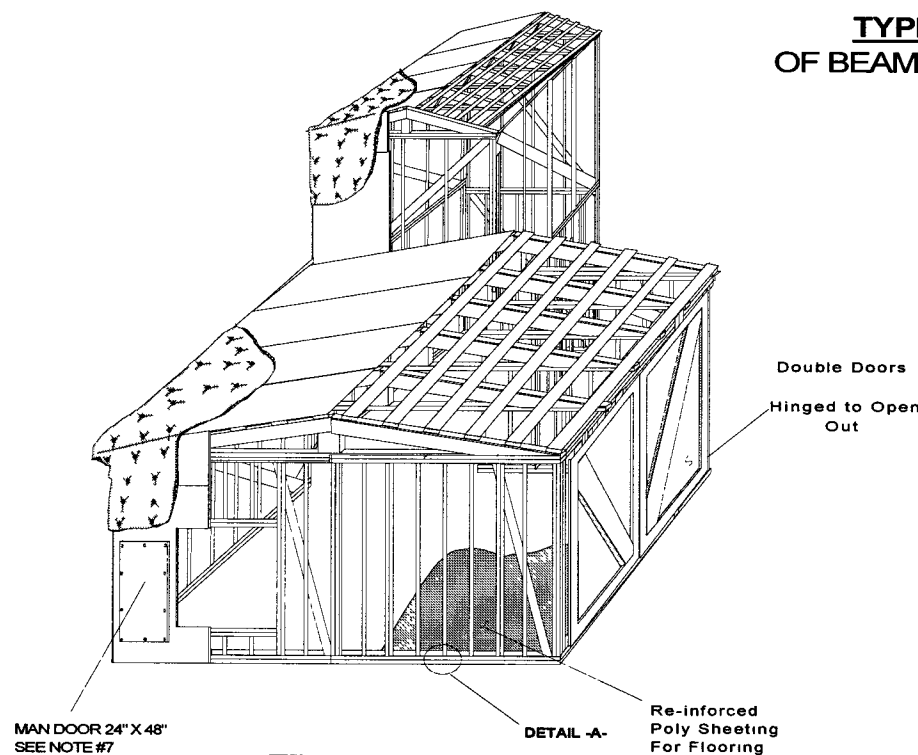


ELEVATION AT TERMINATION (TYP)

ELECTRONIC COPY

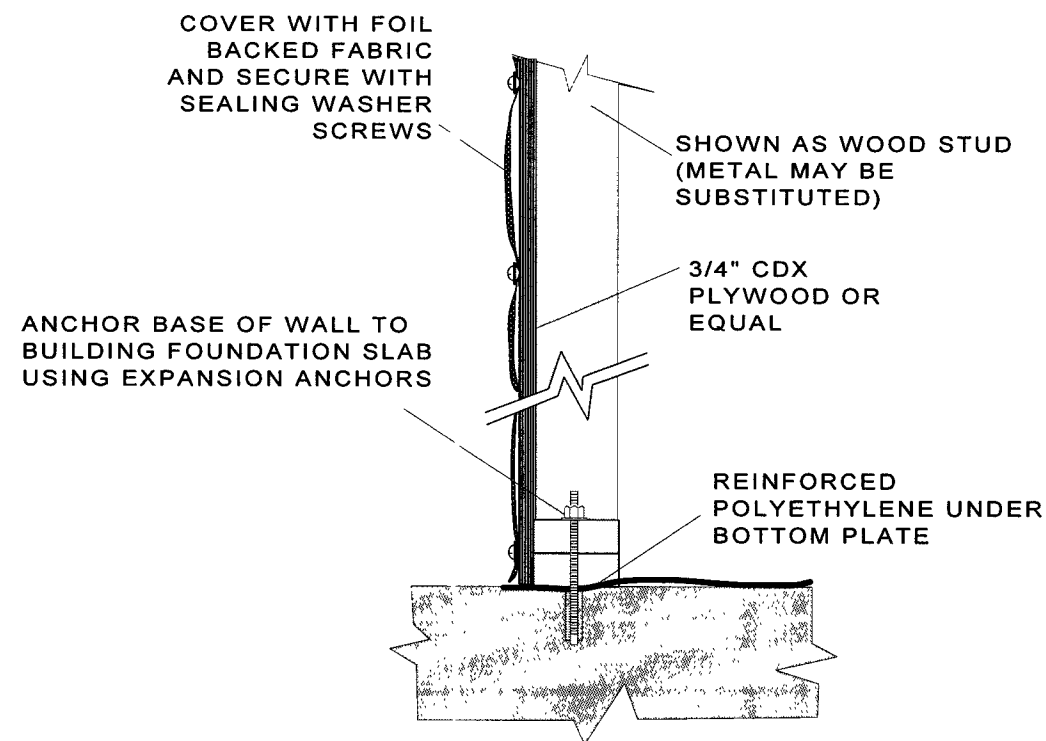
NOTES:

- 1) ROOF SYSTEM TO CONSIST OF TRUSSES AT 2' CENTERS. MINIMUM SLOPE 15 DEGREES.
- 2) ALUMINUM FOIL BACKED LAMINATED POLYETHYLENE MATERIAL 5/16" NOM. THICKNESS.
- 3) OUTER SUPPORTS TO BE ADDED AS REQUIRED. SECURE TO FOUNDATION AS NOTED IN DETAIL -A-.
- 4) STUD MATERIAL TO BE WOOD OR METAL BASED ON CONTRACTOR'S PREFERENCE.
- 5) ALL FASTENERS TO BE DRY WALL OR WOOD SCREWS.
- 6) USE SEALING WASHERS FOR FOIL BACKED COVERING INSTALLATION.
- 7) PROVIDE MAN DOOR REMOVABLE WITH SCREWS. USE SOFT RUBBER GASKET FOR SEAL



TERMINATION WEATHER ENCLOSURE

TERMINATION WEATHER ENCLOSURE



DETAIL -A-

Supplier's/Purchaser's No.		CBI LIGO LASER INTERFEROMETER GRAVITATIONAL-WAVE OBSERVATORY	
TERMINATION WEATHER PROTECTION ENCLOSURE			
Customer's No. PC181520		Contract No. 953571	
By SDH	Chkd	Date	Engineering Supervisor
By	Chkd	Date	Dwg ER 902 Sheet 1 of 1 Rev. 1
By	Chkd	Date	Program Name. ER902.CVS