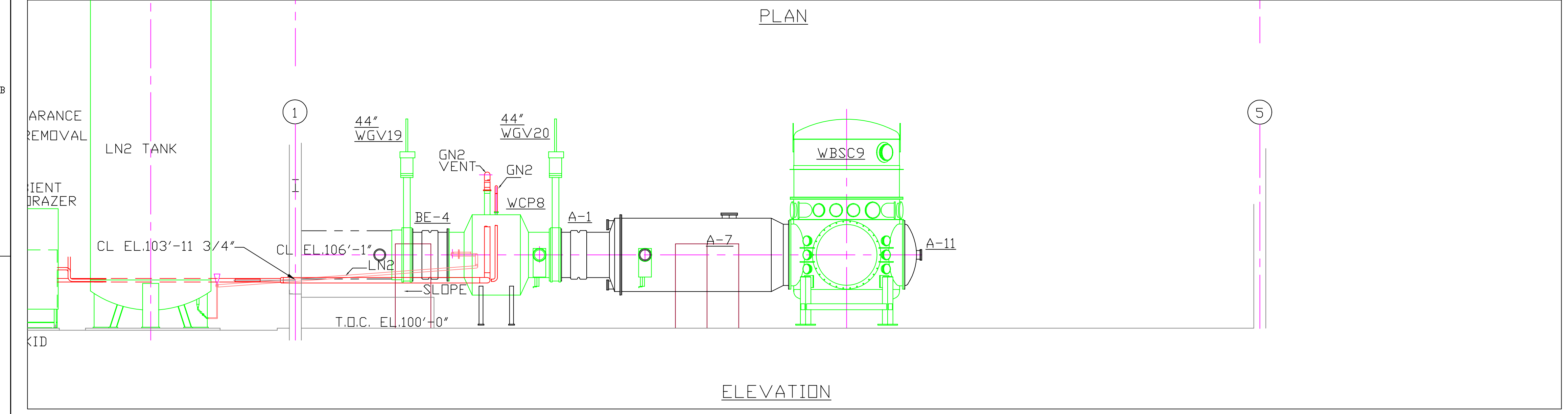


- NOTES:
- ANNULUS ION PUMPS ARE NOT SHOWN IN PROPER LOCATIONS (TO BE MOVED TO +Y SIDE OF VACUUM MANIFOLD).
 - MOVABLE CROSSOVER STILE NOT SHOWN.
 - DETECTOR ASC SUBSYSTEM COMPONENTS NOT SHOWN.
 - END-STATION ALONG Y-ARM IS A MIRROR REFLECTION OF THE X END-STATION ALONG THE X-ARM.
 - NOT SHOWN YET IN ELEVATION:
 - CLEAN ROOM
 - PIPING UNDER VACUUM MANIFOLD
 - CDS RACKS
- △ THIS DRAWING SUPERSEDES DRAWING D961252.

PLAN



ELEVATION

CHAMBER & RACK DESIGNATION TABLE

| | X-ARM | Y-ARM |
|---|----------------------|----------------------|
| A | WBSC9 | WBSC10 |
| B | RACK_1X19 | RACK_1Y20 |
| C | RACK_1X20 | RACK_1Y21 |
| D | RACK_1X21 | RACK_1Y22 |
| E | CDSAC-14 | CDSAC_18 |
| F | CDSAC_15 | CDSAC_19 |
| G | W-EX-CC-PD-VEAC-01A | W-EY-CC-PD-VEAC-01A |
| H | W-EX-CC-PD-VEAC-01B | W-EY-CC-PD-VEAC-01B |
| I | W-EX-203-PD-CDSAC-01 | W-EY-203-PD-CDSAC-01 |
| J | W-EX-CC-PD-VEAC-04B | W-EY-CC-PD-VEAC-04B |
| K | W-EX-CC-PD-VEAC-04A | W-EY-CC-PD-VEAC-04A |
| L | W-EX-CC-PD-VEAC-02A | W-EY-CC-PD-VEAC-02A |
| M | W-EX-CC-PD-VEAC-02B | W-EY-CC-PD-VEAC-02B |

PRELIMINARY

| | | | | | | | | | | | | | | | | | |
|---|-------------|----------|-------------|----------|--|-------------|-----|-----|-----|----|----|----------------|----------|------|--------------|--|--|
| UNLESS OTHERWISE SPECIFIED DIMENSIONS ARE IN FEET (cm) | | | | | | | | | | | | | | | | | |
| TOLERANCES: | | | | | | | | | | | | | | | | | |
| FRACTIONAL ± | | | | | | | | | | | | | | | | | |
| ANGULAR/MACH ± BEND ± | | | | | | | | | | | | | | | | | |
| TWO PLACE DECIMAL ± | | | | | | | | | | | | | | | | | |
| THREE PLACE DECIMAL ± | | | | | | | | | | | | | | | | | |
| FINISHED SURFACE RMS | | | | | | | | | | | | | | | | | |
| BREAK CORNERS IN: OUT: | | | | | | | | | | | | | | | | | |
| REMOVE ALL BURRS | | | | | | | | | | | | | | | | | |
| DO NOT SCALE THIS DRAWING | | | | 01 | SEE D980225-README (SHEET 2, THIS DRAWING) | | | | | | | CONLEY | 05-08-98 | | | | |
| | | | | 00 | INITIAL VERSION △ | | | | | | | CONLEY | 04-17-98 | | | | |
| DWG. NO. | DESCRIPTION | DWG. NO. | DESCRIPTION | USED ON: | REV | DESCRIPTION | SYS | DET | CDS | VE | CC | BT | DRWN | DATE | | | |
| REFERENCE DRAWINGS | | | | | | | | | | | | | | | | | |
| NEXT ASS'Y: | | | | | | | | | | | | | | | | | |
| ISSUE DESCRIPTION | | | | | | | | | | | | SCALE | | | NTS | | |
| | | | | | | | | | | | | D980225-01.dwg | | | D980225-01-E | | |
| | | | | | | | | | | | | 1 OF 2 | | | | | |

LIGO CALIFORNIA INSTITUTE OF TECHNOLOGY
MASSACHUSETTS INSTITUTE OF TECHNOLOGY

END-STATION (X-ARM)
INTEGRATED LAYOUT (HANFORD)

CAD FILE: D980225-01.dwg
SIZE: D
DWG. NO.: D980225-01-E
SHEET: 1 OF 2

D980225-README

SCOPE:

This document is a cumulative history of pertinent changes for each version of the D980225 drawing. For revision details see the respective DCN(s).

Revision: n/a

-00

New drawing number issued, superseding previous drawing number D961252 as noted on drawing.

-01

Added rack, chamber, & electrical designations.
Added PSI VE stub-ups.