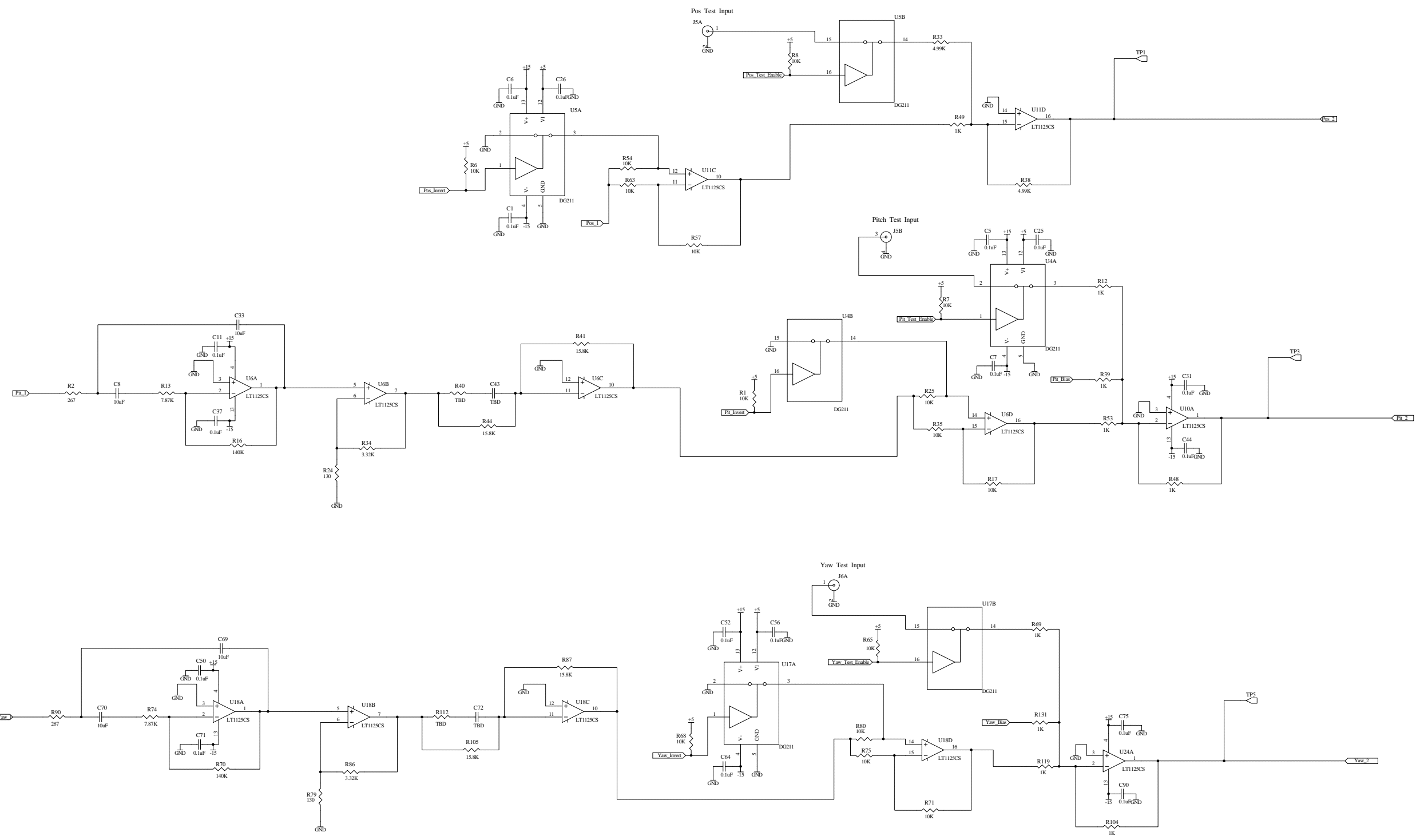


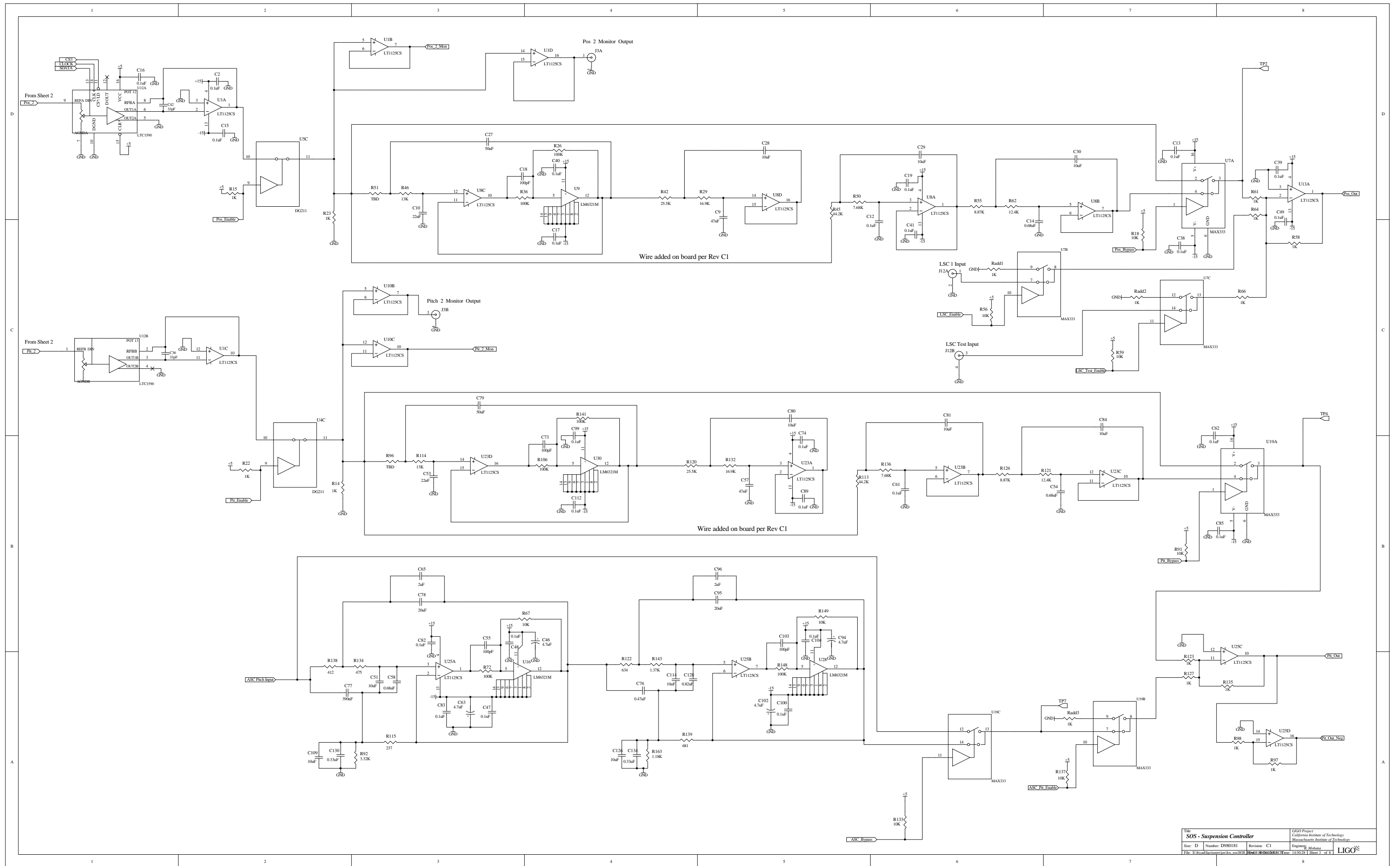
D

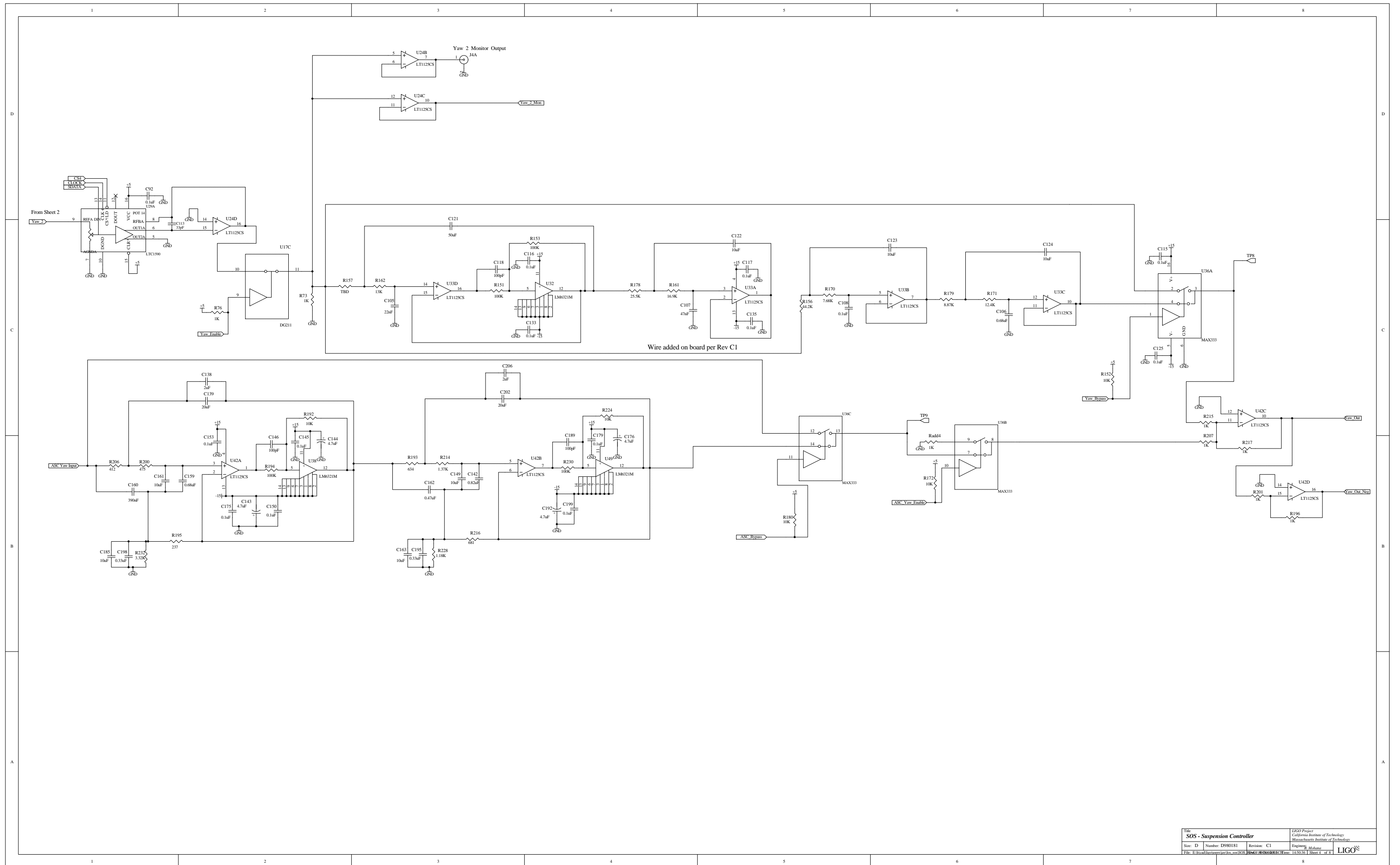
C

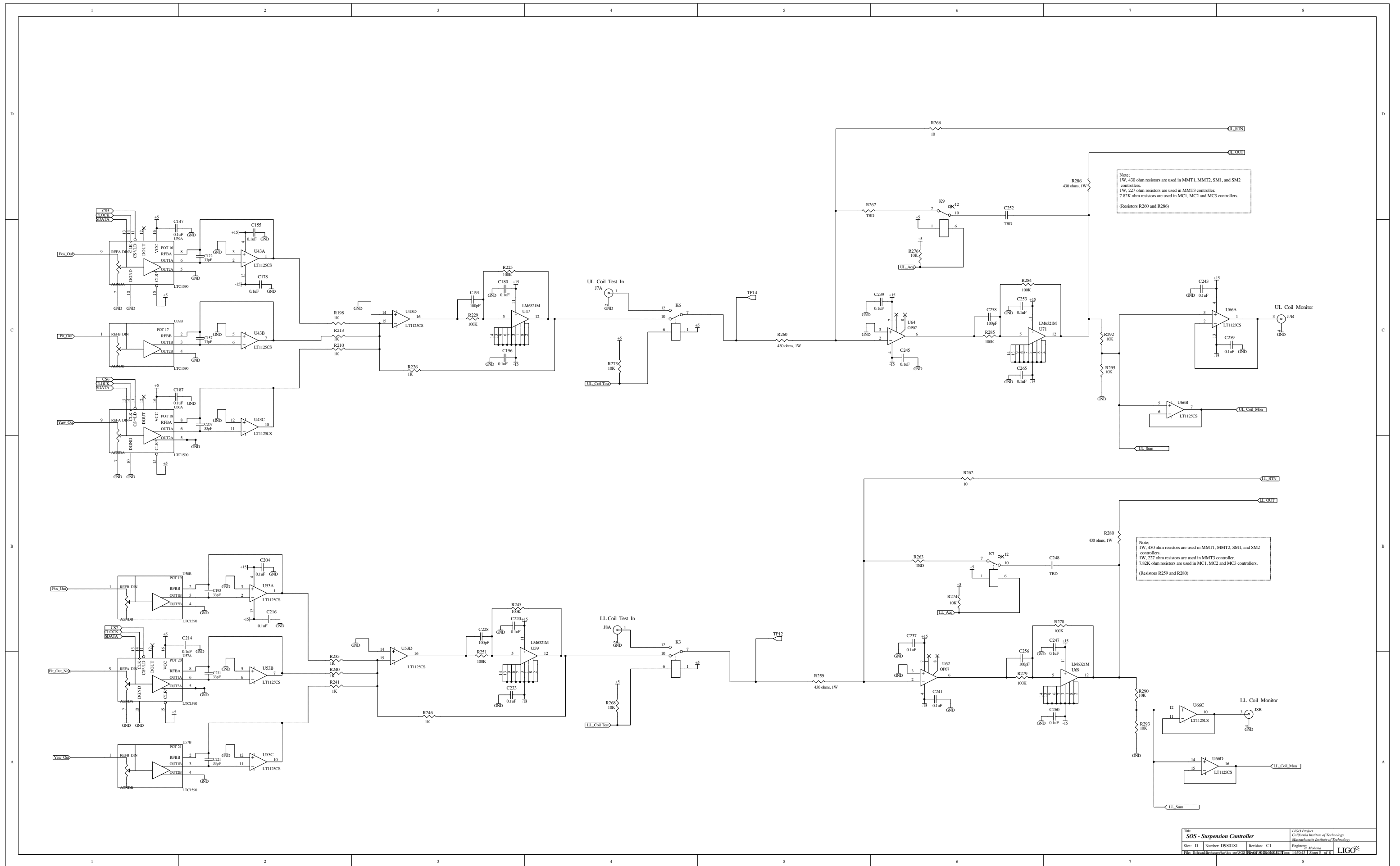
B

A





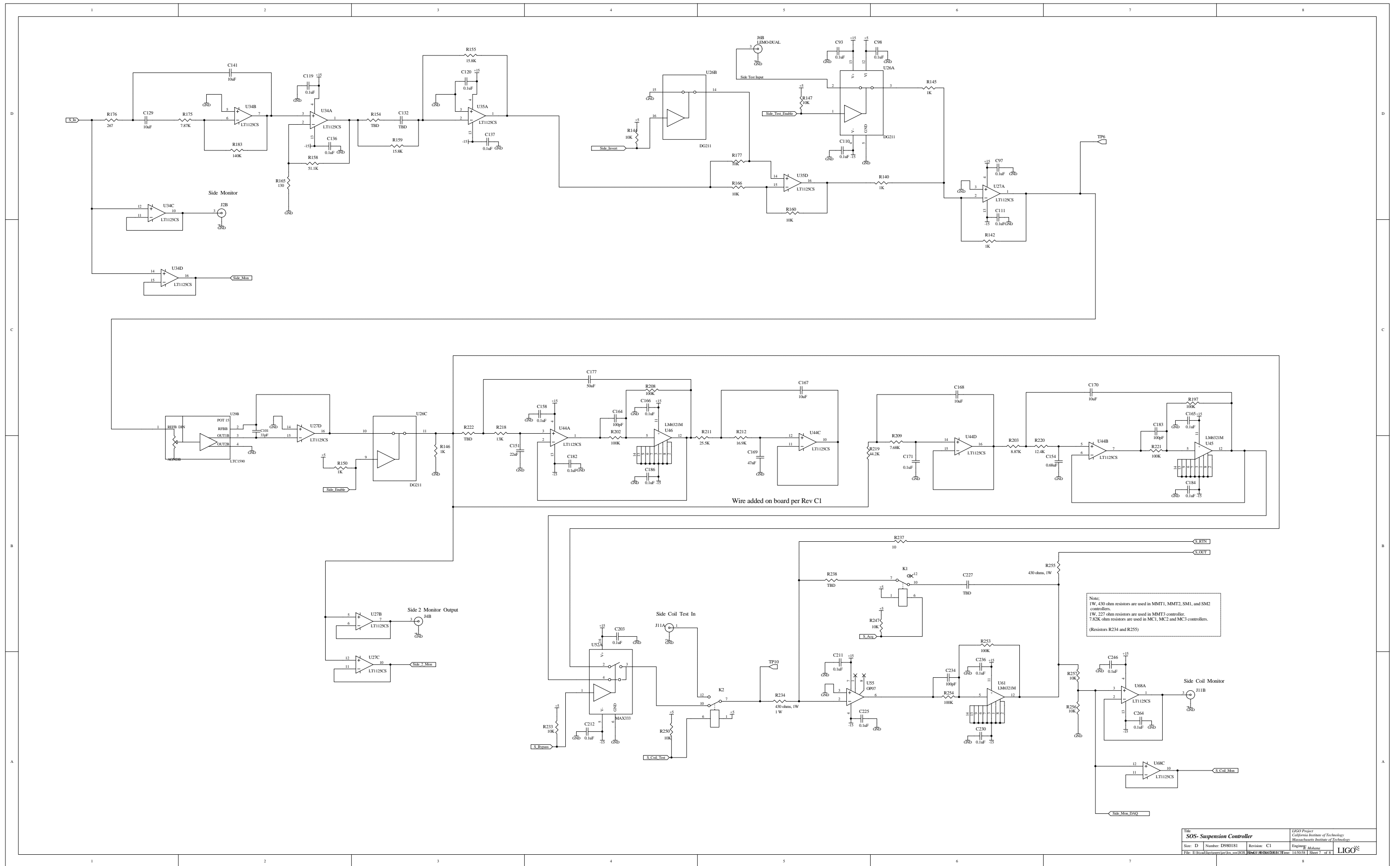




Note:  
 1W, 430 ohm resistors are used in MMT1, MMT2, SM1, and SM2 controllers.  
 1W, 227 ohm resistors are used in MMT3 controller.  
 7.82K ohm resistors are used in MC1, MC2 and MC3 controllers.  
 (Resistors R260 and R286)

Note:  
 1W, 430 ohm resistors are used in MMT1, MMT2, SM1, and SM2 controllers.  
 1W, 227 ohm resistors are used in MMT3 controller.  
 7.82K ohm resistors are used in MC1, MC2 and MC3 controllers.  
 (Resistors R259 and R280)





Note:  
 1W, 430 ohm resistors are used in MMT1, MMT2, SM1, and SM2 controllers.  
 1W, 227 ohm resistors are used in MMT3 controller.  
 7.82K ohm resistors are used in MC1, MC2 and MC3 controllers.  
 (Resistors R234 and R255)

Revision	Description	Date
A	Initial Release	1998
B	As built changes for coil driver resistor values, per notes sheet 5, 6 and 7.	5/99
C	Added Radd1, Radd2, Radd3, Radd4 to terminate unused inputs of MAX333 switches per E010179-00.	10/01
C1	Removed two stages of chebychev filter for each degree of freedom, per E010182-00-C.	10/01

