




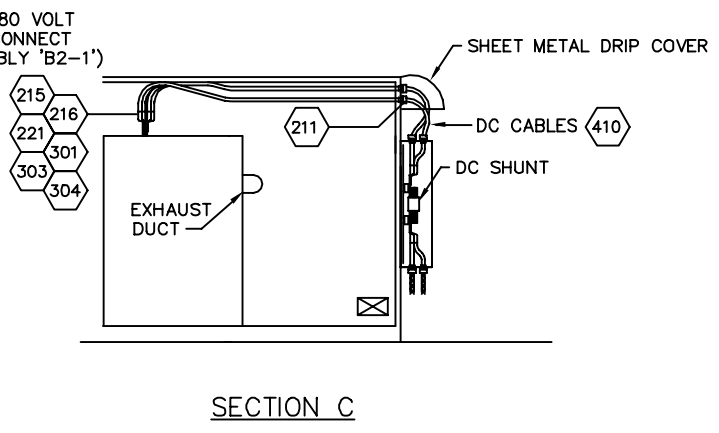
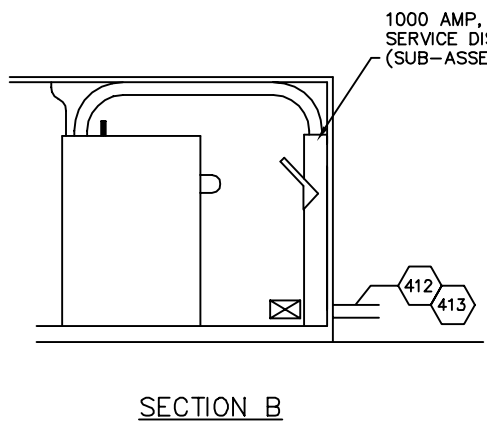
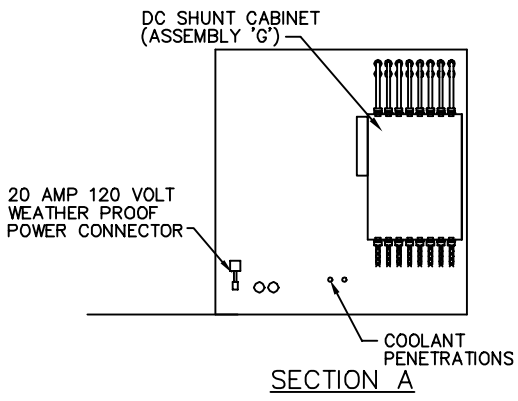
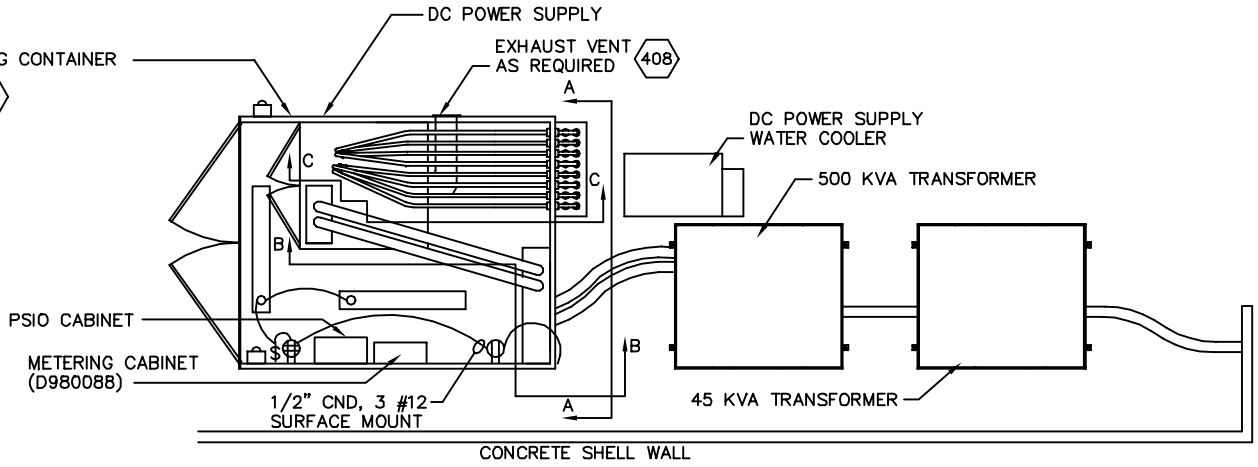
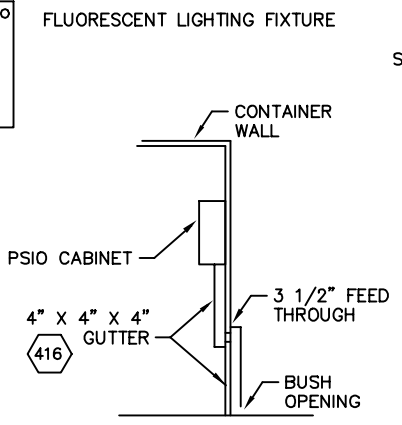


-  EMERGENCY SHUTDOWN SWITCH (405, 406)
-  SINGLE POLE LIGHT SWITCH
-  SURFACE MOUNT DUPLEX RECEPTACLE
-  AMBIENT TEMPERATURE CONTROLLED FANS
-  FLUORESCENT LIGHTING FIXTURE

NOTE: SURFACE MOUNT CONDUITS BETWEEN DEVICES AND EQUIPMENT. CONTROL WIRING TO PSIO TO BE INSTALLED BY LIGO. CONTRACTOR SHALL INSTALL LIGO FURNISHED PSIO CABINET. MODIFY POWER SUPPLY UNIT MAIN BREAKER. REMOVE 1000A MAIN BREAKER. EXTEND POWER SUPPLY BUS FROM EXISTING LUGS TO CABLE LOG CONNECTIONS. USE BUS OF EQUAL SIZE TO EXISTING. SUPPORT BUS WITH INSULATORS TO POWER SUPPLY BACK BOARD. BARRIER ENTIRE ASSEMBLY WITH PLEXIGLASS SHIELD ATTACHED TO EXISTING POWER SUPPLY BARRIER. BOX BREAKER AND REMOVED HARDWARE. DISASSEMBLE BUS EXTENSION AND REPLACE MAIN BREAKER WHEN POWER SUPPLY IS REMOVED FROM SERVICE.



DEITZ AND ASSOCIATES, INC.
 DRAWN BY: GDW
 FILE: LIGOB2
 SCALE:
 DATE: 4/99

LIGO-D980079-C-W
 PORTABLE DC POWER SUPPLY WITH
 277/480, 3 PHASE METERED SERVICE