

8 7 6 5 4 3 2 1

REV	DESCRIPTION	REVISIONS	DATE	APPROVED
A	SEE ECW D972990-A FOR CHANGE LIST		10/16/98	T. THOMPSON

D
C
B
A

D
C
B
A

Grout Requirements:

Base plate grout shall be the flowable type and it shall meet with the requirements of ASTM C1107 for nonshrink, nonmetallic grout.

Test per ASTM C109 specifications shall be performed, including strength tests, at the discretion of the site manager.

The minimum grout strength shall be 7000 psi at 28 days.

Acceptable grout products are:

1. Five Star Grout – manufactured by: Five Star Products
2. Masterflow 928 - manufactured by: Masterbuilders
3. Masterflow 713 - manufactured by: Masterbuilders
4. 1107 Advantage grout – manufactured by: Dayton Superior

Application:

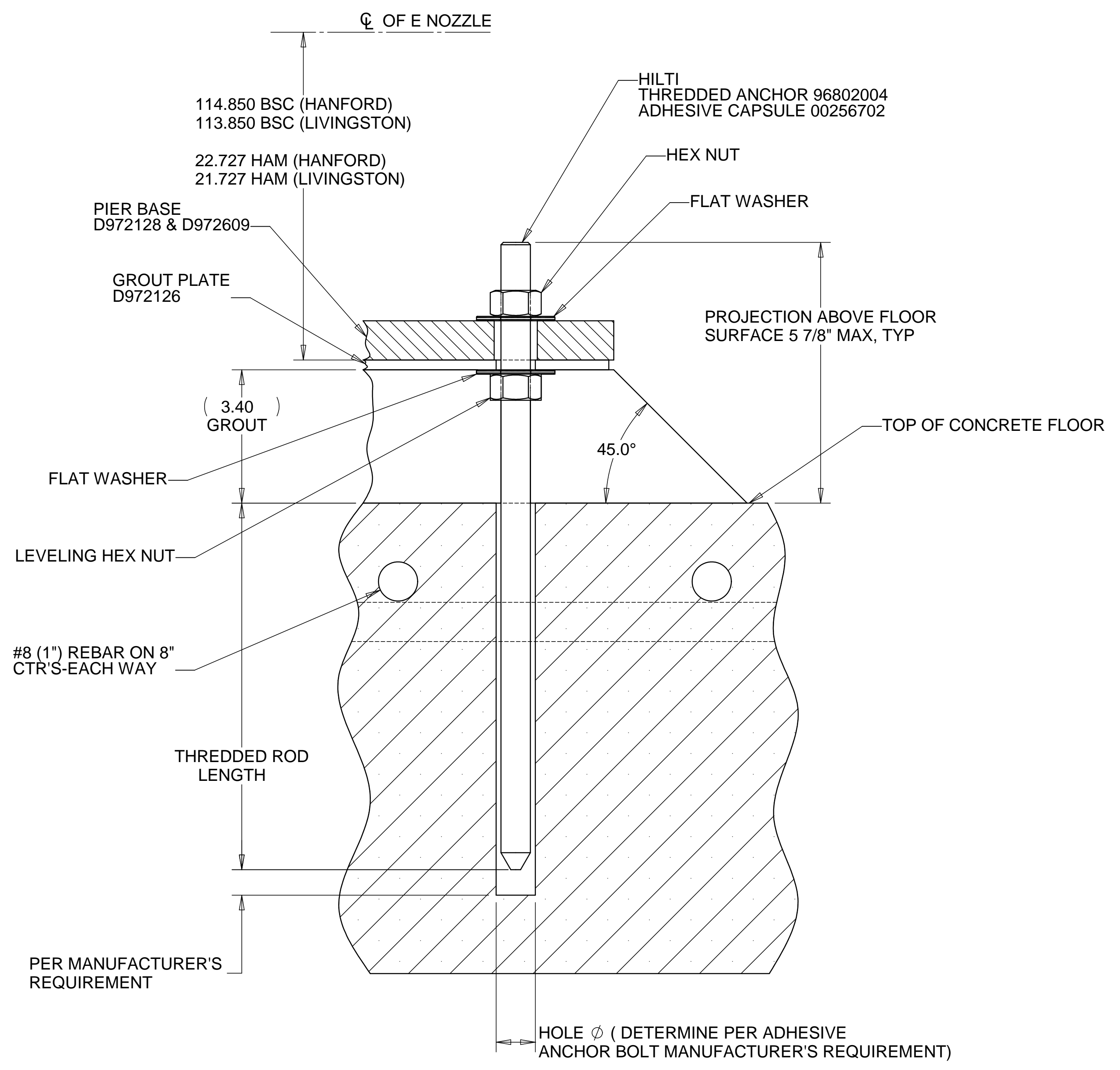
NOTE: Grout must be mixed outside the vacuum equipment areas and applied in a manner to minimize contamination.

The undersides of all grout plates shall be clean. The concrete surface shall be stripped of sealant, roughened and dampened prior to placing grout.

At base plate locations that are required to be scarified, indentations in the concrete shall be a minimum of 1/8 inch.

Grout shall be mixed, placed and cured in accordance with the manufacturer's instructions. Care shall be taken during grout installation to avoid voids in the grout pad (proper vent holes, vibration, etc.)

Curing shall continue for a minimum of 7 days per the manufacturer's specifications.



PARTS LIST			
UNLESS OTHERWISE SPECIFIED: DIMENSIONS ARE IN INCHES -TOLERANCES-		CAD GENERATED DRAWING. DO NOT MANUALLY UPDATE DO NOT SCALE DRAWING	
DECIMALS .X = +/- .1 .XX = +/- .03 .XXX = +/- .010	ANGULAR = +/- .30° SURFACE FINISH = 250	TITLE HYTEC, INC LIGO CONCRETE ANCHOR DETAIL ADHESIVE TYPE	
FINISH		SIGNATURE	DATE
		DESIGNED ROGER L. SMITH	09-28-98
		DRAWN ROGER L. SMITH	09-28-98
		CHECKED T. THOMPSON	09-28-98
		ENGR. T. THOMPSON	09-28-98
		APPROVED T. THOMPSON	09-28-98
PART NO. D972990-1		DWG. NO. D972990	SCALE 1/2
		SIZE D	SHEET NO. 1 of 1
		REVISION A	

8 7 6 5 4 3 2 1