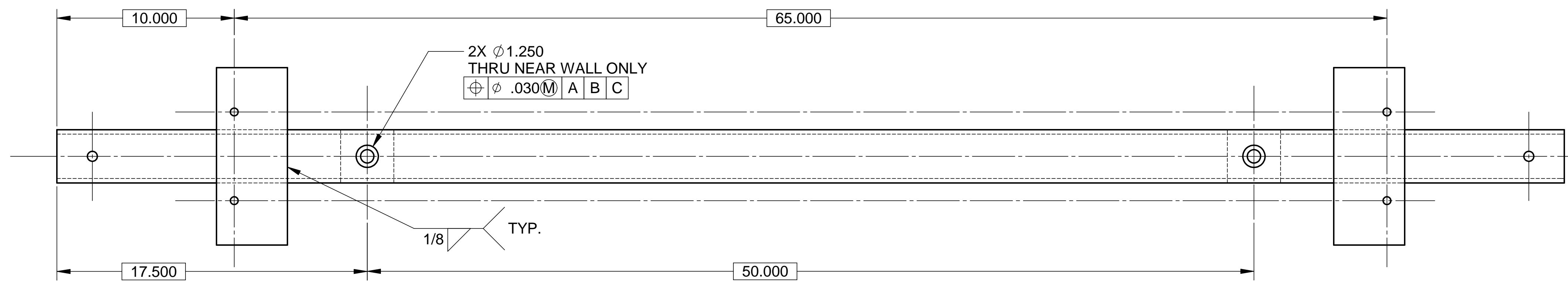


8 7 6 5 4 3 2 1

REVISIONS			
REV.	DESCRIPTION	DATE	APPROVED

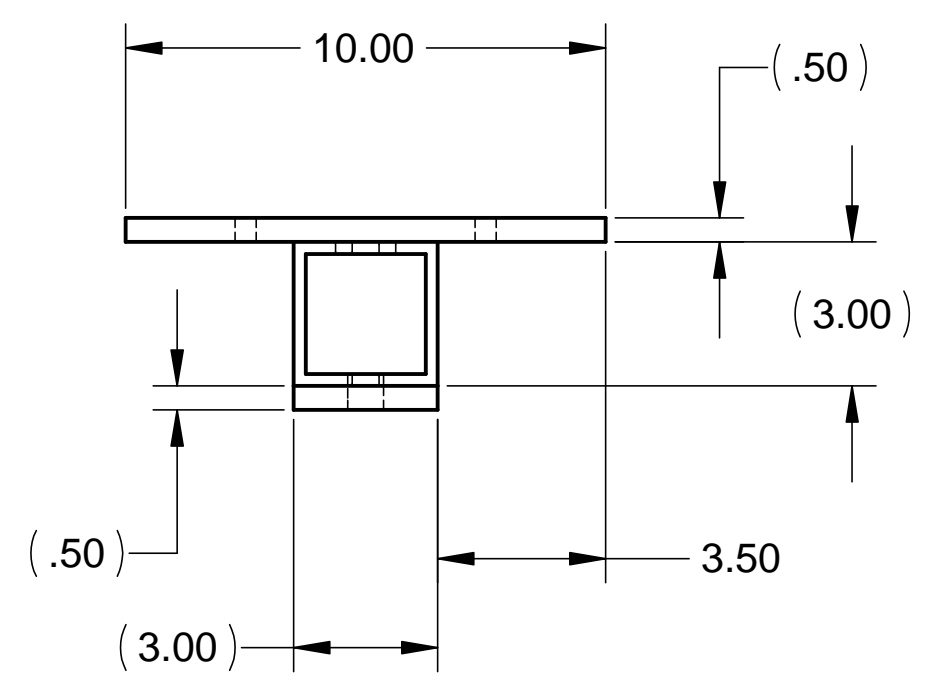
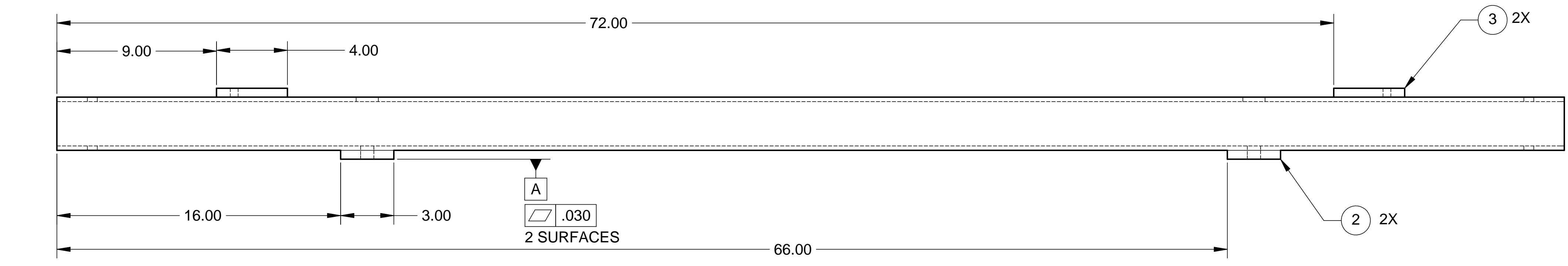
D

D



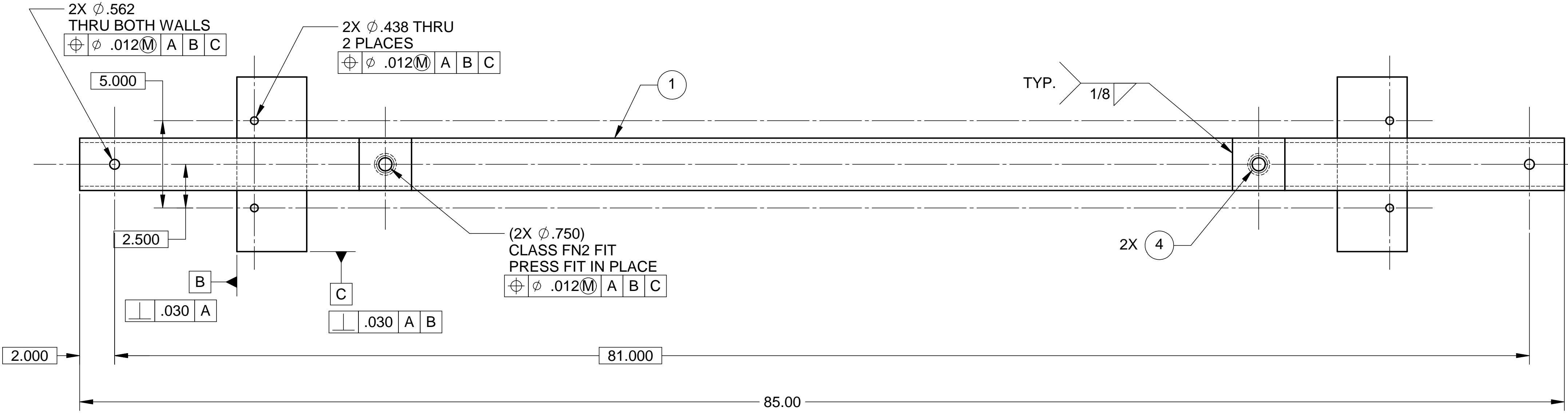
C

C



B

B



NOTES: UNLESS OTHERWISE SPECIFIED

- ALL DIMENSIONS IN INCHES
- DIMENSIONS AND TOLERANCING PER ASME Y14.5M-1994
- SURFACE TEXTURE PER ANSI/ASME B 46.1-1985
- REMOVE ALL BURRS AND BREAK SHARP EDGES TO A MAXIMUM OF .015
- ALL INSIDE CORNERS TO BE .015 RADIUS MAX
- COUNTERSINK 82 DEGREES ALL TAPPED HOLES TO MAJOR DIAMETER
- COUNTERSINK 82 DEGREES APPROXIMATELY .015 DEEP ALL DRILLED HOLES
- PART NUMBER (DRAWING NO. PLUS DASH NO.) TO BE CLEARLY MARKED ON THE PART ITSELF.
- ALL ALUM. WELDING DONE BY A GTAW PROCESS USING 2% THORIATED TUNGSTEN WELDING ELECTRODES AND ER4043 WELDING ROD (SPEC. PER AWS A5.10-80).
- NO SULFUR BASED CUTTING FLUIDS ALLOWED. APPROVED MACHINE LUBRICANT: ALUMICUT, MISTIC METAL MOVER, PRINCETON, IL.
- PART WEIGHS 27.5 Lbs.

ITEM NO.	QTY.	DESCRIPTION	MATERIAL
1	1	TUBE, 3 X 3 X .25 WALL	6061-T6 ALUM
2	2	PLATE, 1/2" THK	6061-T6 ALUM
3	2	PLATE, 1/2" THK	6061-T6 ALUM
4	2	DRILL BUSHING, .75 I.D. X .75 LONG	McMASTER 8491A554

PARTS LIST			
UNLESS OTHERWISE SPECIFIED: DIMENSIONS ARE IN INCHES -TOLERANCES-		CAD GENERATED DRAWING, DO NOT MANUALLY UPDATE DO NOT SCALE DRAWING	
DECIMALS .XX = +/- .03 .XXX = +/- .010	ANGULAR = +/- 30' SURFACE FINISH = 250	TITLE <b>HYTEC, INC</b> HAM OPTICS TABLE FINAL CENTERING HOIST BEAM	
FINISH	SIGNATURE	DATE	DWG. NO.
DESIGNED	W. K. MILLER	5-11-98	D972980
DRAWN	W. K. MILLER	5-11-98	SIZE
CHECKED	HARRY SALAZAR	-	D
ENGR.	T. THOMPSON	-	SHEET NO.
APPROVED	T. THOMPSON	-	D 1 of 1
PART NO. <b>D972980-1</b>	SCALE	1/4	REVISION

8 7 6 5 4 3 2 1

A

A