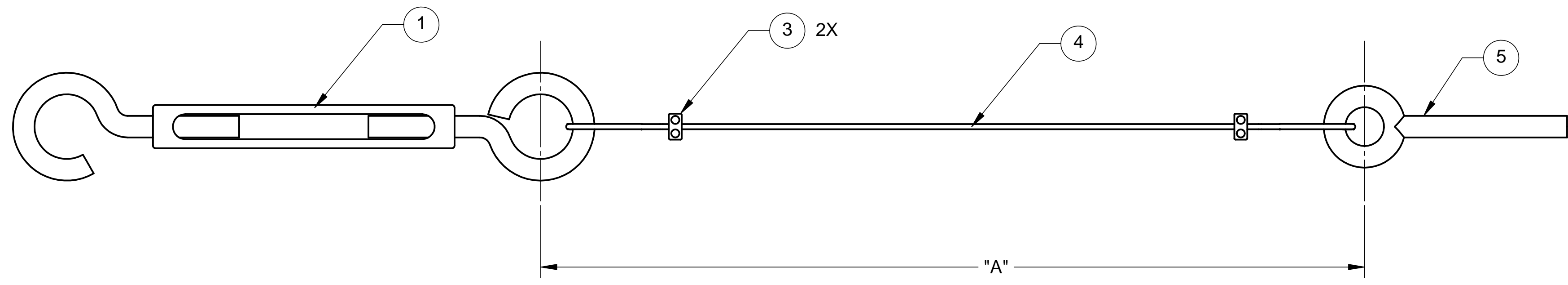
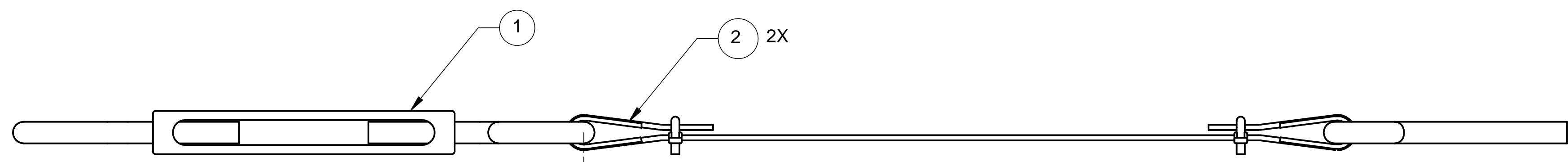
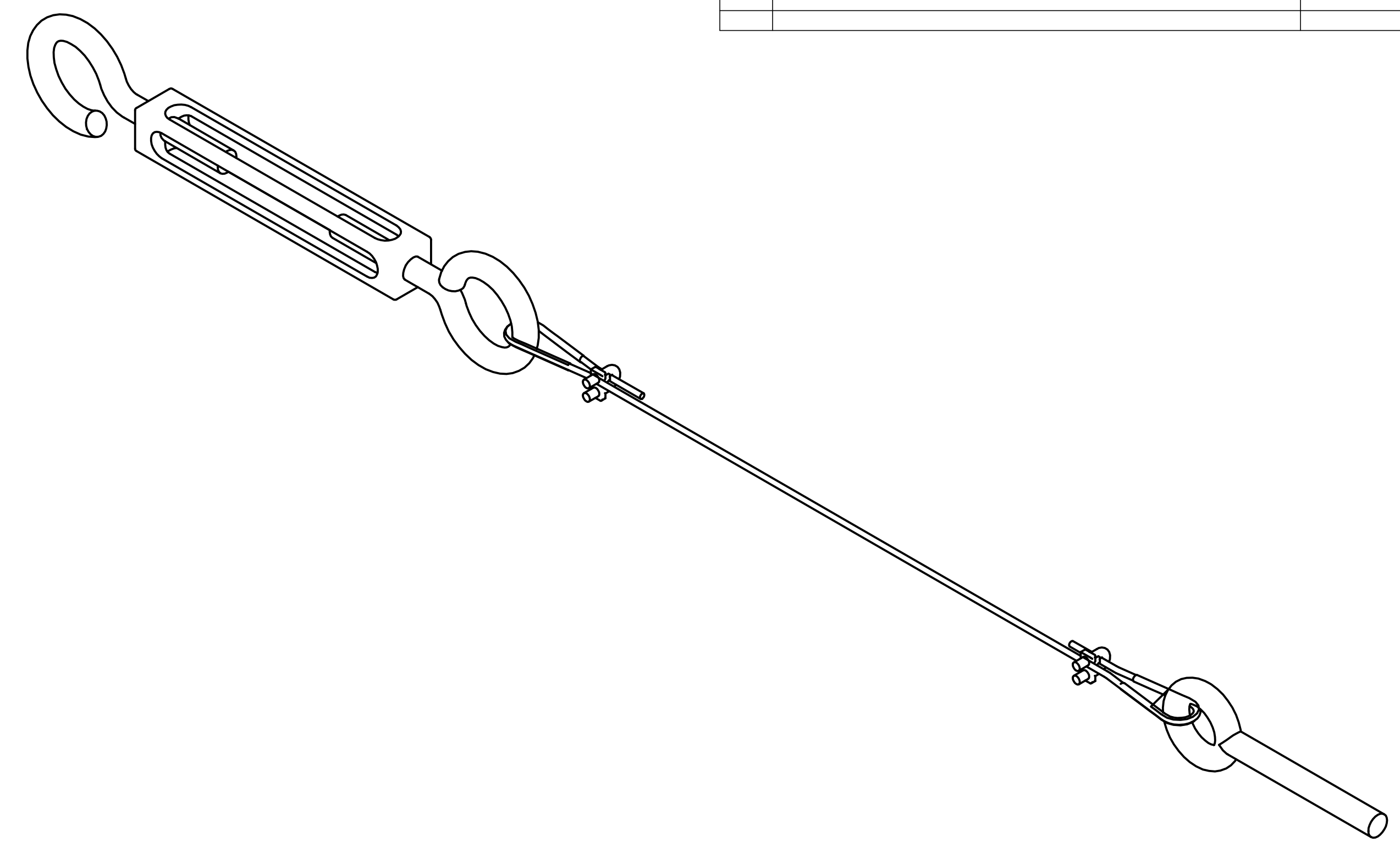


8 7 6 5 4 3 2 1

REVISIONS			
REV.	DESCRIPTION	DATE	APPROVED



PART NO.	DIM "A"	DESCRIPTION
D972978-1	41.0	LOADING OPTICS TABLE
D972978-3	64.0	FINAL CENTERING OF OPTICS TABLE

NOTES: UNLESS OTHERWISE SPECIFIED

1. ALL DIMENSIONS IN INCHES
2. DIMENSIONS AND TOLERANCING PER ASME Y14.5M-1994
3. SURFACE TEXTURE PER ANSI/ASME B 46.1-1985
4. REMOVE ALL BURRS AND BREAK SHARP EDGES TO A MAXIMUM OF .015
5. ALL INSIDE CORNERS TO BE .015 RADIUS MAX
6. COUNTERSINK 82 DEGREES ALL TAPPED HOLES TO MAJOR DIAMETER
7. COUNTERSINK 82 DEGREES APPROXIMATELY .015 DEEP ALL DRILLED HOLES
8. PARTS TO BE THOROUGHLY CLEANED TO REMOVE ALL OIL, GREASE, DIRT AND CHIPS
9. PART NUMBER (DRAWING NO. PLUS DASH NO. PLUS SERIAL NO.) TO BE CLEARLY MARKED ON THE PART ITSELF.
10. ALL FABRICATION, CLEANING, AND HANDLING MAINTAINED TO HYTEC SPECIFICATION: LIGO-TS-03 CATEGORY 1.
11. NO SULFUR BASED CUTTING FLUIDS ALLOWED. APPROVED STAINLESS STEEL MACHINE LUBRICANT: RELTON A-9, RELTON

ITEM NO.	QTY.	PART NO.	DESCRIPTION
1	1	McMASTER 30315T22	TURNBUCKLE, 1/4-20UNC, 316 CAST SST
2	2	McMASTER 8914T22	WIRE ROPE THIMBLE, 1/16 THIN PATTERN, SST
3	2	McMASTER 31985T19	WIRE ROPE CLIP, 1/16, SST
4	1	McMASTER 3461T82	1/16 DIA. WIRE ROPE, 1 X 19 STRAND, SST
5	1	McMASTER 9494T34	EYEBOLT, 1/4-20 UNC X 2.0 LONG, SST

PARTS LIST					
UNLESS OTHERWISE SPECIFIED: DIMENSIONS ARE IN INCHES -TOLERANCES-		CAD GENERATED DRAWING, DO NOT MANUALLY UPDATE DO NOT SCALE DRAWING			
DECIMALS .XX = +/- .03 .XXX = +/- .010	ANGULAR = +/- .30° SURFACE FINISH = 250	<p style="text-align: center;">HYTEC, INC</p> <p style="text-align: center;">TITLE HAM OPTICS TABLE GUY WIRE ASSEMBLY</p>			
FINISH					
		DESIGNED	W. K. MILLER	DATE	4-28-98
		DRAWN	W. K. MILLER	DATE	4-28-98
		CHECKED	HARRY SALAZAR		
		ENGR.	T. THOMPSON		
		APPROVED	T. THOMPSON		
PART NO. D972978-1		DWG. NO. D972978		SIZE D	SHEET NO. 1 of 1
		SCALE 1/1		REVISION	

8 7 6 5 4 3 2 1