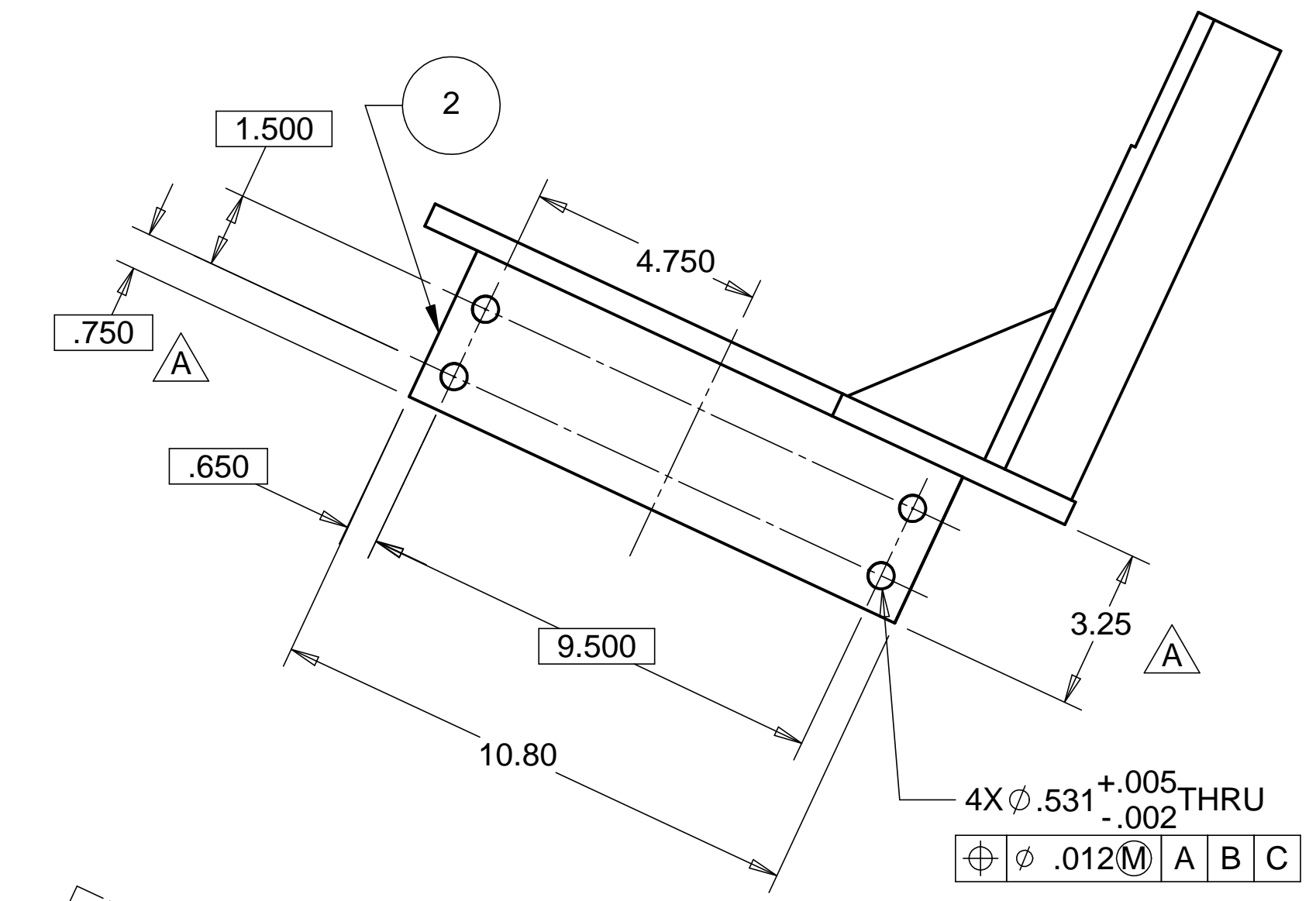
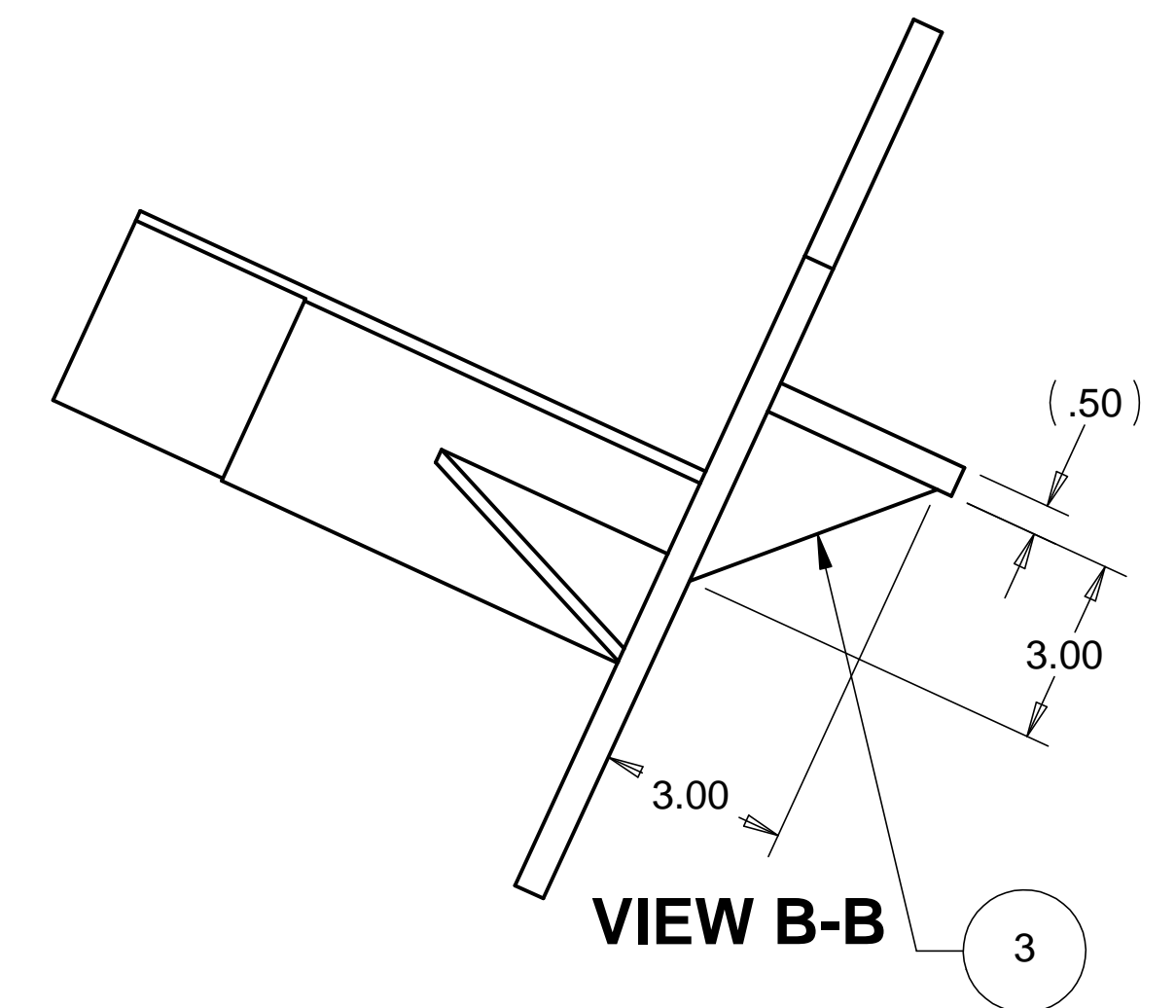
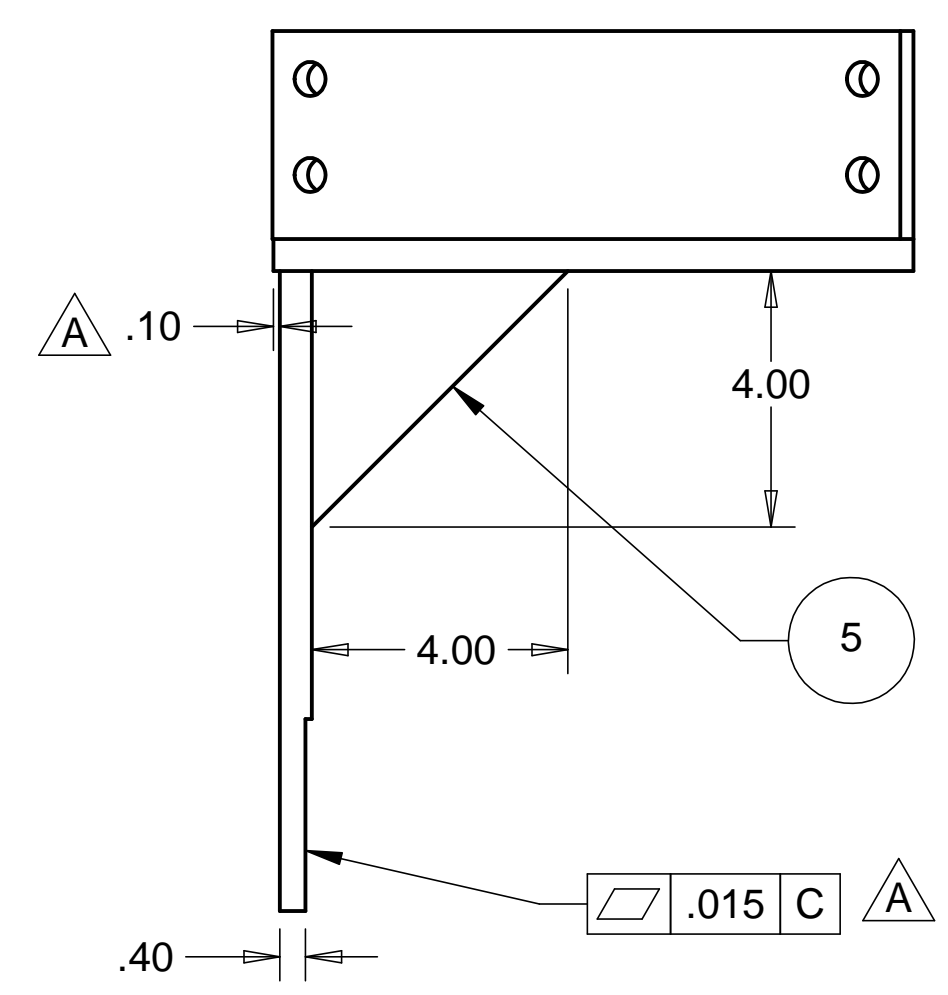


8 7 6 5 4 3 2 1

REV.	DESCRIPTION	DATE	APPROVED
A	SEE ECN FOR CHANGES	3-23-98	WKM

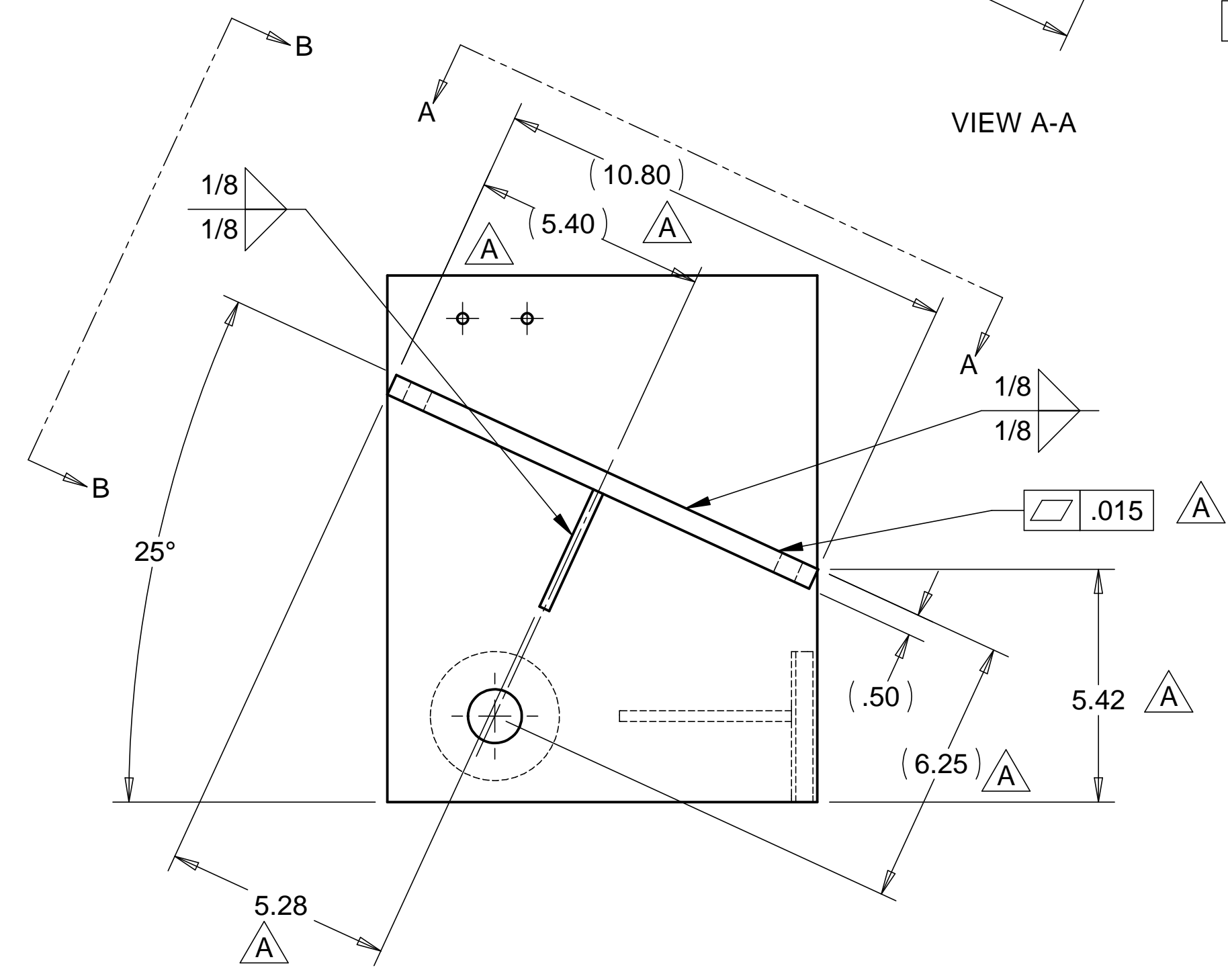
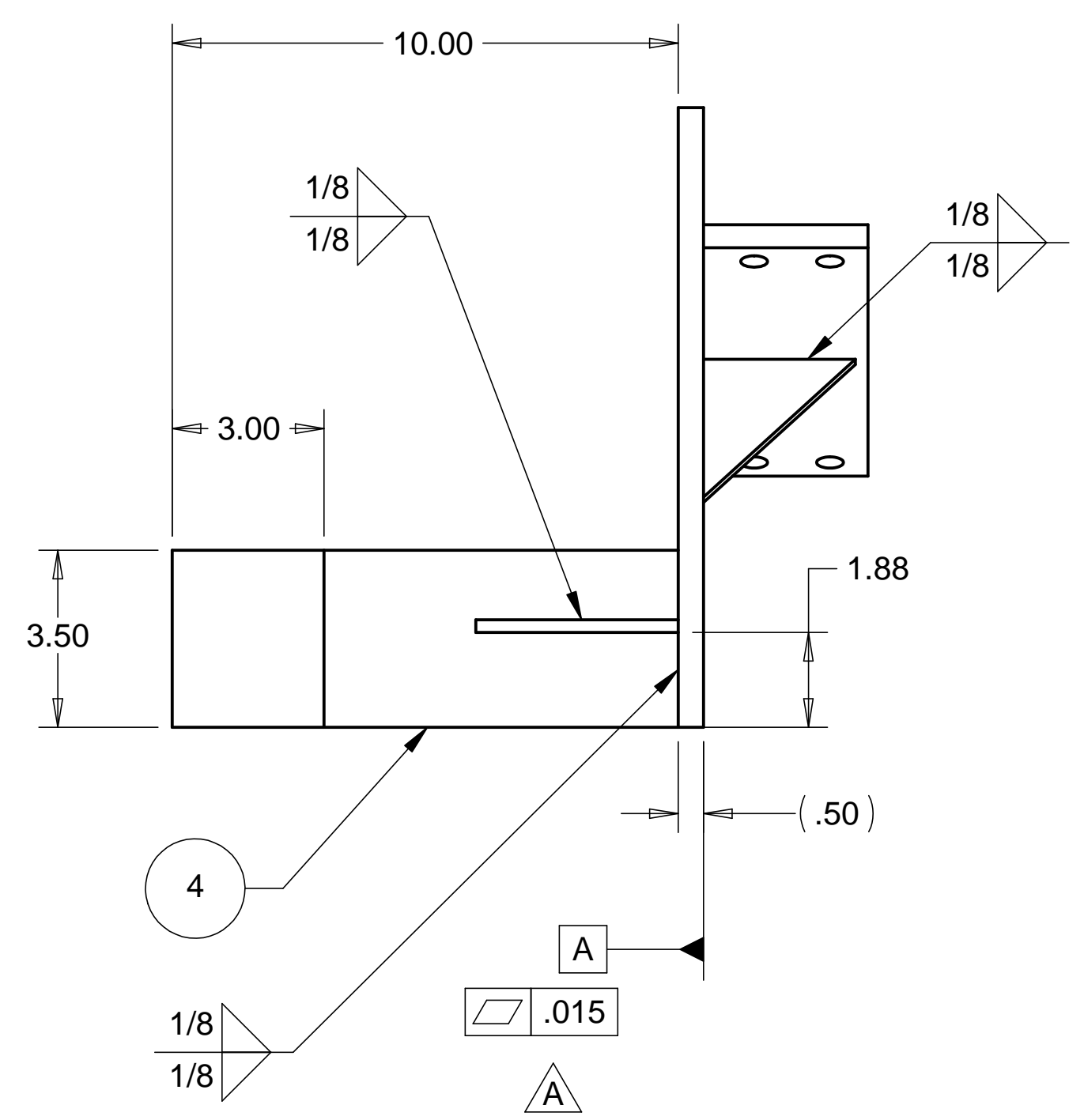
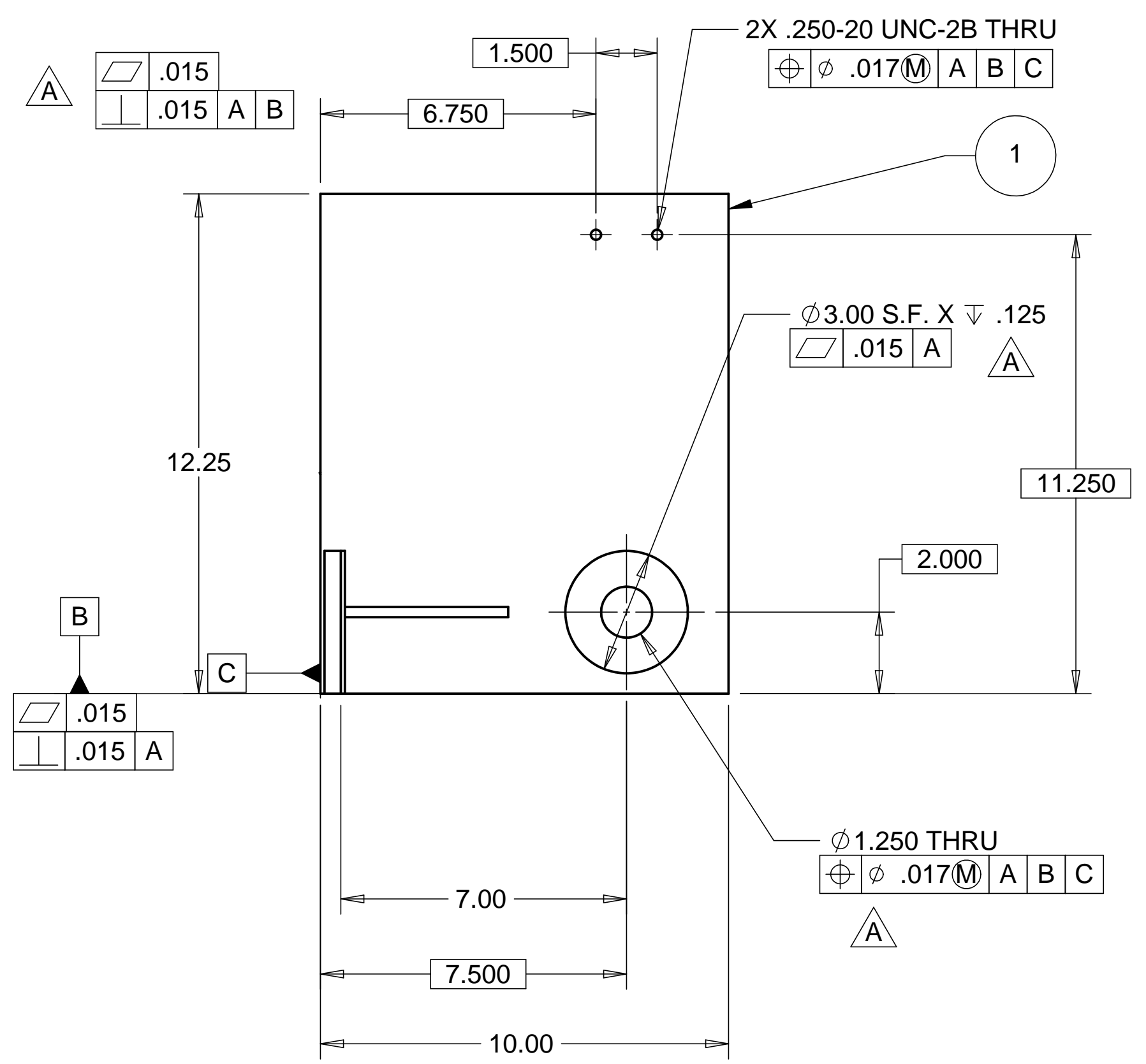
D

D



C

C



B

B

ITEM NO.	QTY.	DESCRIPTION	MATERIAL
1	1	PLATE, .50 THK.	303 STAINLESS STEEL
2	1	PLATE, .50 THK.	303 STAINLESS STEEL
3	1	PLATE, .25 THK.	303 STAINLESS STEEL
4	1	PLATE, .50 THK.	303 STAINLESS STEEL
5	1	PLATE, .25 THK.	303 STAINLESS STEEL

NOTES: UNLESS OTHERWISE SPECIFIED

- ALL DIMENSIONS IN INCHES
- DIMENSIONS AND TOLERANCING PER ANAS I Y14.5M-1994
- SURFACE TEXTURE PER ANI/ASME B 46.1-1985
- REMOVE ALL BURRS AND BREAK SHARP EDGES TO A MAXIMUM OF .015
- ALL INSIDE CORNERS TO BE .015 RADIUS MAX
- COUNTERSINK 82 DEGREES ALL TAPPED HOLES TO MAJOR DIAMETER
- COUNTERSINK 82 DEGREES APPROXIMATELY .015 DEEP ALL DRILLED HOLES
- PARTS TO BE THOROUGHLY CLEANED TO REMOVE ALL OIL, GREASE, DIRT AND CHIPS
- PART NUMBER (DRAWING NO. PLUS DASH NO. PLUS SERIAL NO.) TO BE CLEARLY MARKED ON THE PART ITSELF.
- PART WEIGHS 28.43 Lbs.

A

A

PARTS LIST				TITLE	
UNLESS OTHERWISE SPECIFIED: DIMENSIONS ARE IN INCHES -TOLERANCES-		CAD GENERATED DRAWING, DO NOT MANUALLY UPDATE DO NOT SCALE DRAWING		<b>HYTEC, INC</b>	
DECIMALS	ANGULAR = +/- .30°			HAM CENTERING JIG LEFT SIDE WELDMENT	
.X = +/- .1		FINISH	SIGNATURE	DATE	DWG. NO.
.XX = +/- .03			DESIGNED W. K. MILLER	1-21-98	SIZE
.XXX = +/- .010	SURFACE FINISH = 250		DRAWN GERALD BUSTOS	1-21-98	SHEET NO.
PART NO. D972958-1			CHECKED HARRY SALAZAR	3-14-98	D972958
			ENGR. T. THOMPSON	3-14-98	D
			APPROVED T. THOMPSON	3-14-98	1 of 1
			SCALE 1/3		REVISION A

8 7 6 5 4 3 2 1