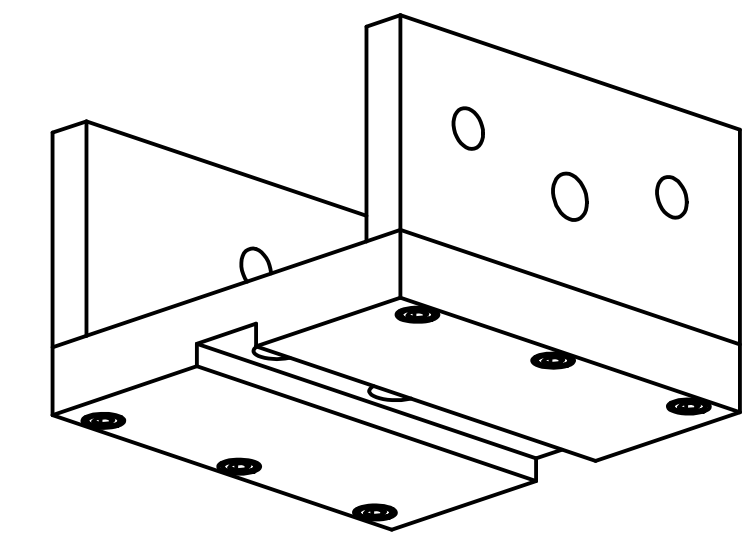
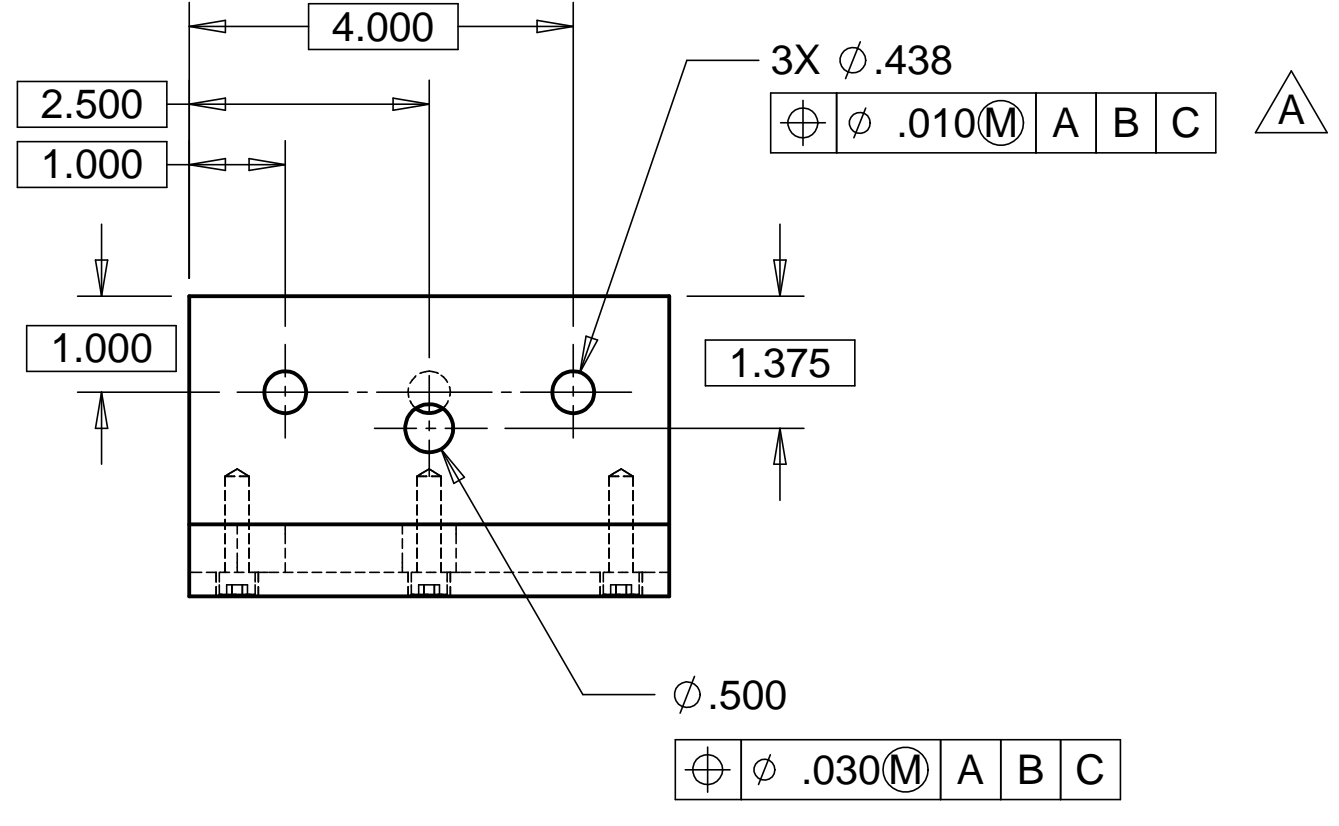
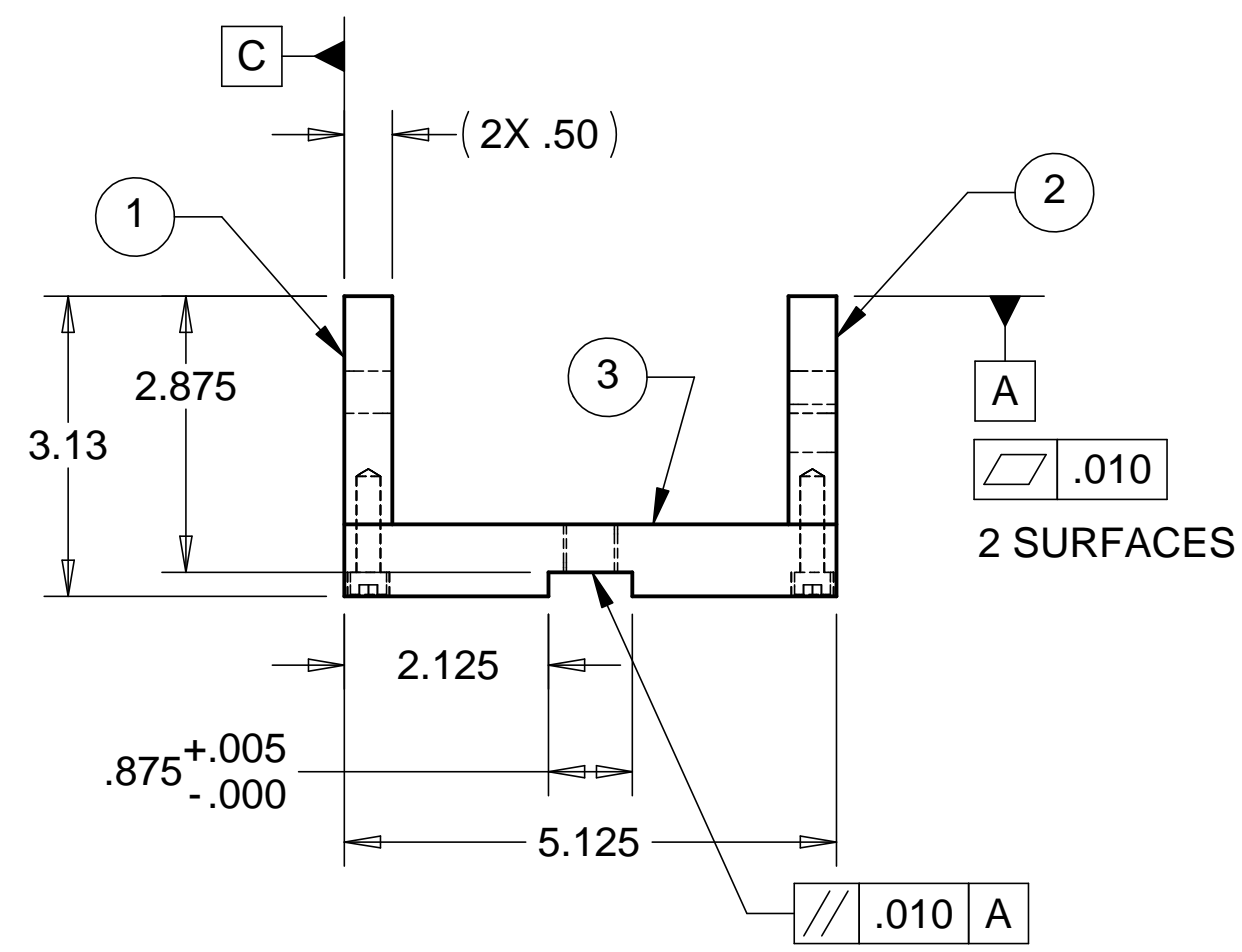
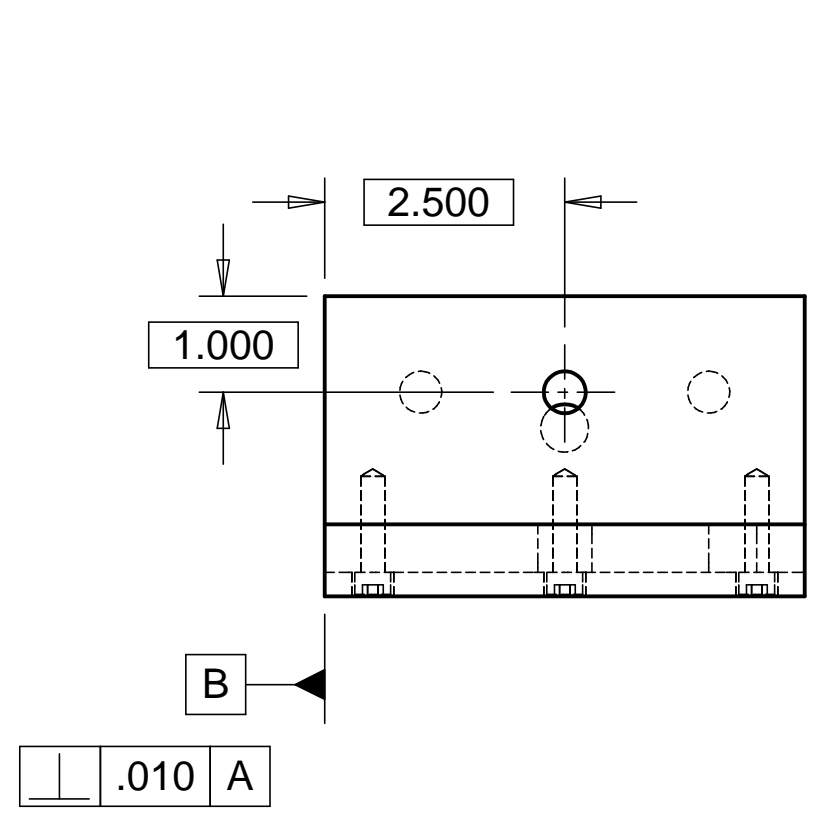


8 7 6 5 4 3 2 1

REVISIONS			
REV.	DESCRIPTION	DATE	APPROVED
A	REVISED GD&T	3-16-98	WKM

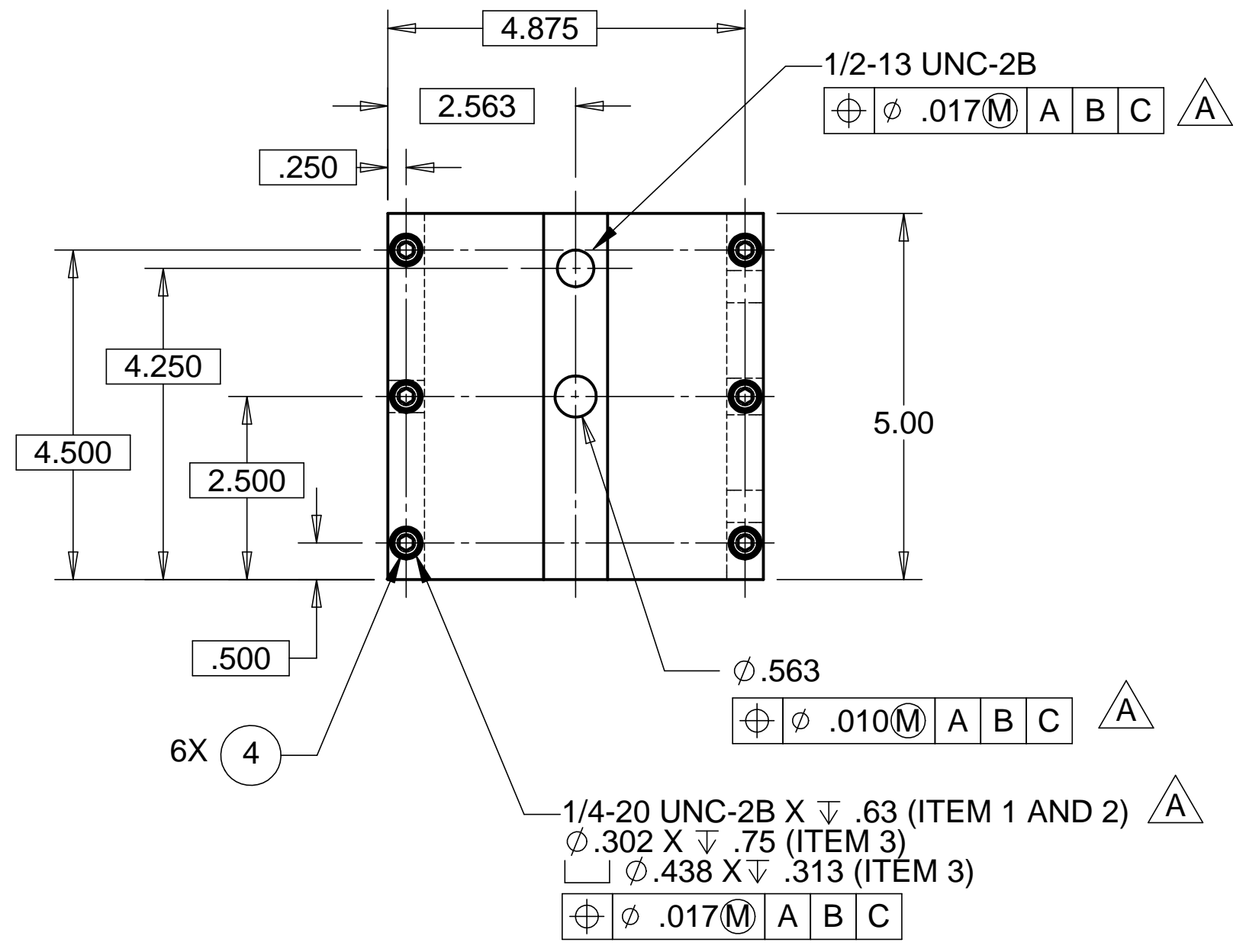
D

D



C

C



B

B

NOTES: UNLESS OTHERWISE SPECIFIED

- ALL DIMENSIONS IN INCHES
- DIMENSIONS AND TOLERANCING PER ASME Y14.5M-1994
- SURFACE TEXTURE PER ANSI/ASME B 46.1-1985
- REMOVE ALL BURRS AND BREAK SHARP EDGES TO A MAXIMUM OF .015
- ALL INSIDE CORNERS TO BE .015 RADIUS MAX
- COUNTERSINK 82 DEGREES ALL TAPPED HOLES TO MAJOR DIAMETER
- COUNTERSINK 82 DEGREES APPROXIMATELY .015 DEEP ALL DRILLED HOLES
- PARTS TO BE THOROUGHLY CLEANED TO REMOVE ALL OIL, GREASE, DIRT, AND CHIPS.
- PART NUMBER (DRAWING NO. PLUS DASH NO. PLUS SERIAL NO.) TO BE CLEARLY MARKED ON THE PART ITSELF.
- PART WEIGHS 9.0 Lbs.

ITEM NO.	QTY.	DESCRIPTION	MATERIAL
1	1	1/2" THK PLATE	303 SSSL
2	1	1/2" THK PLATE	303 SSSL
3	1	3/4" THK PLATE	303 SSSL
4	6	SOCKET HEAD CAPSCREW, 1/4-20 UNC-2A X 1.00 LONG	SSSL

A

A

PARTS LIST				HYTEC, INC	
UNLESS OTHERWISE SPECIFIED: DIMENSIONS ARE IN INCHES -TOLERANCES-		CAD GENERATED DRAWING, DO NOT MANUALLY UPDATE DO NOT SCALE DRAWING		TITLE RAIL SYSTEM TROLLEY	
DECIMALS .XX = +/- .03 .XXX = +/- .010	ANGULAR = +/- 30'	SURFACE FINISH = 250		DWG. NO.	SIZE SHEET NO.
FINISH	DESIGNED	SIGNATURE	DATE	D972946	D 1 of 1
	DRAWN	W. K. MILLER	1/18/98		
	CHECKED	HARRY SALAZAR	2/2/98		
	ENGR.	T. THOMPSON	2/2/98		
PART NO. D972946-1	APPROVED	T. THOMPSON	2/2/98	SCALE 1/2	REVISION A

8 7 6 5 4 3 2 1