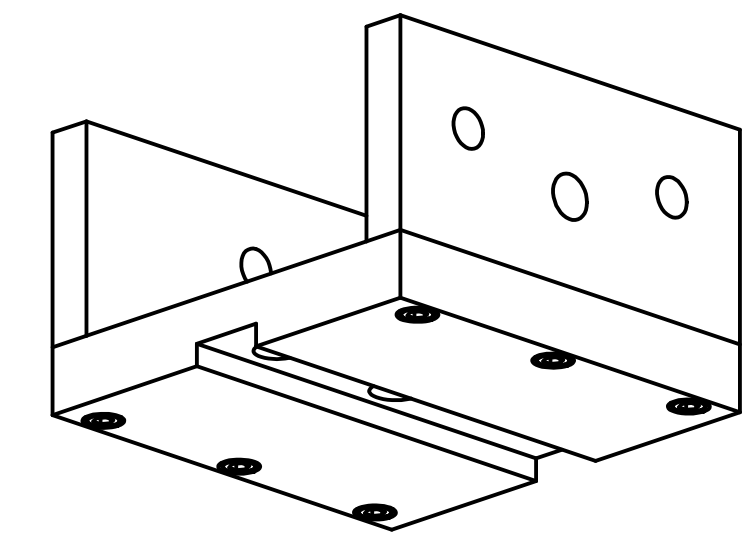
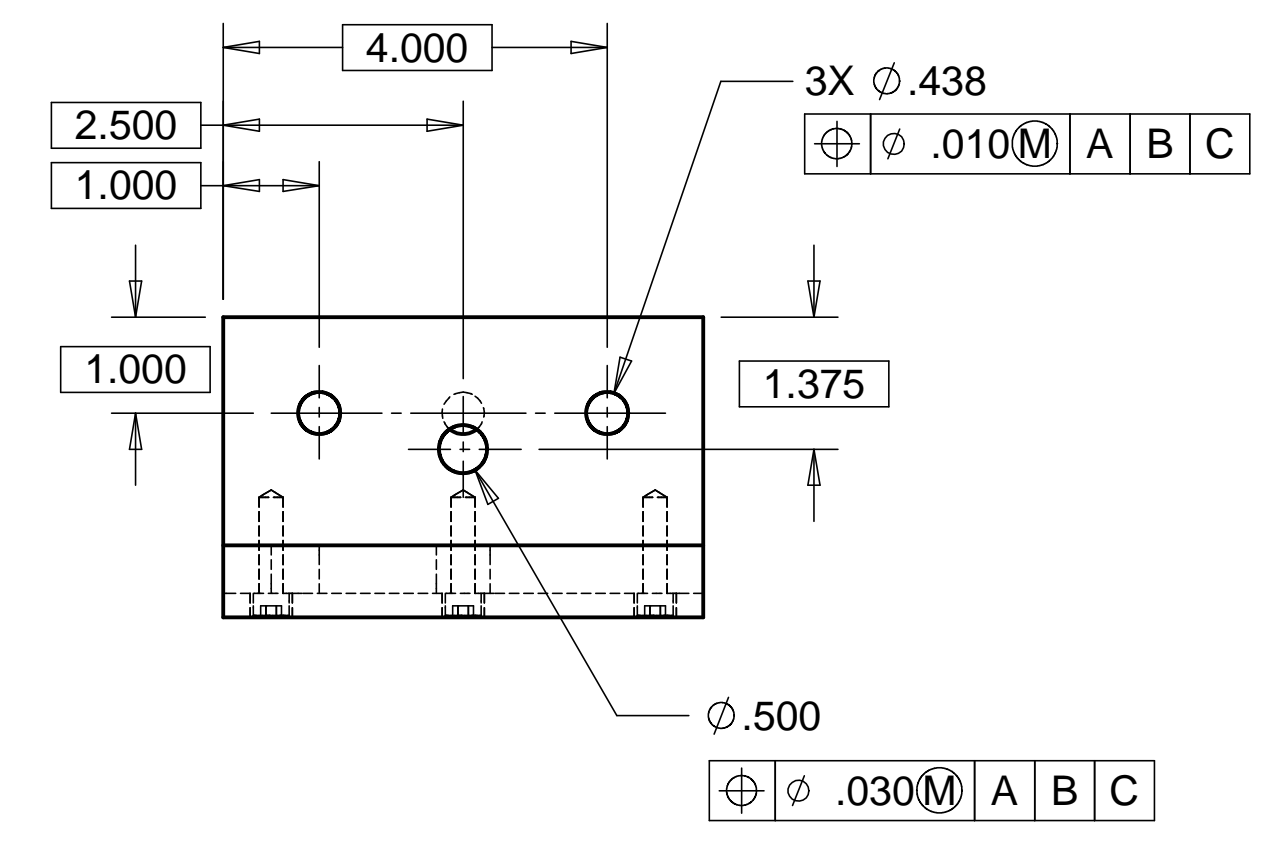
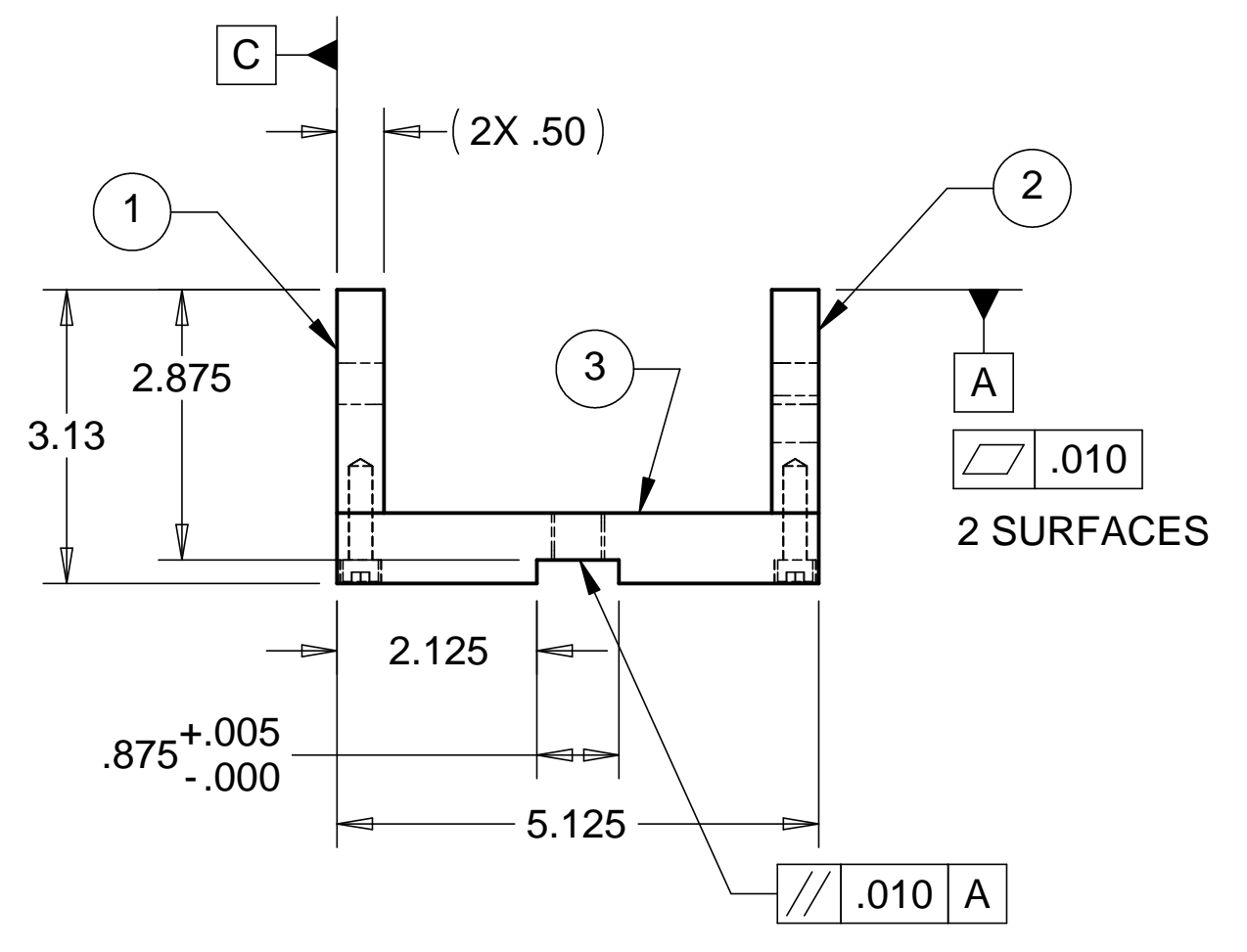
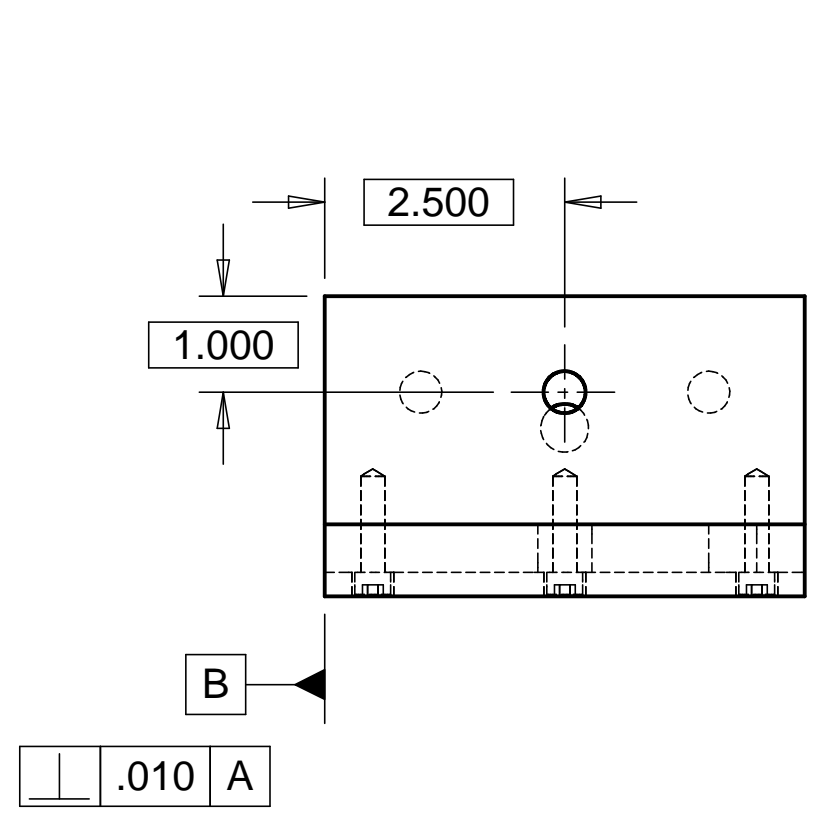


8 7 6 5 4 3 2 1

REVISIONS			
REV.	DESCRIPTION	DATE	APPROVED

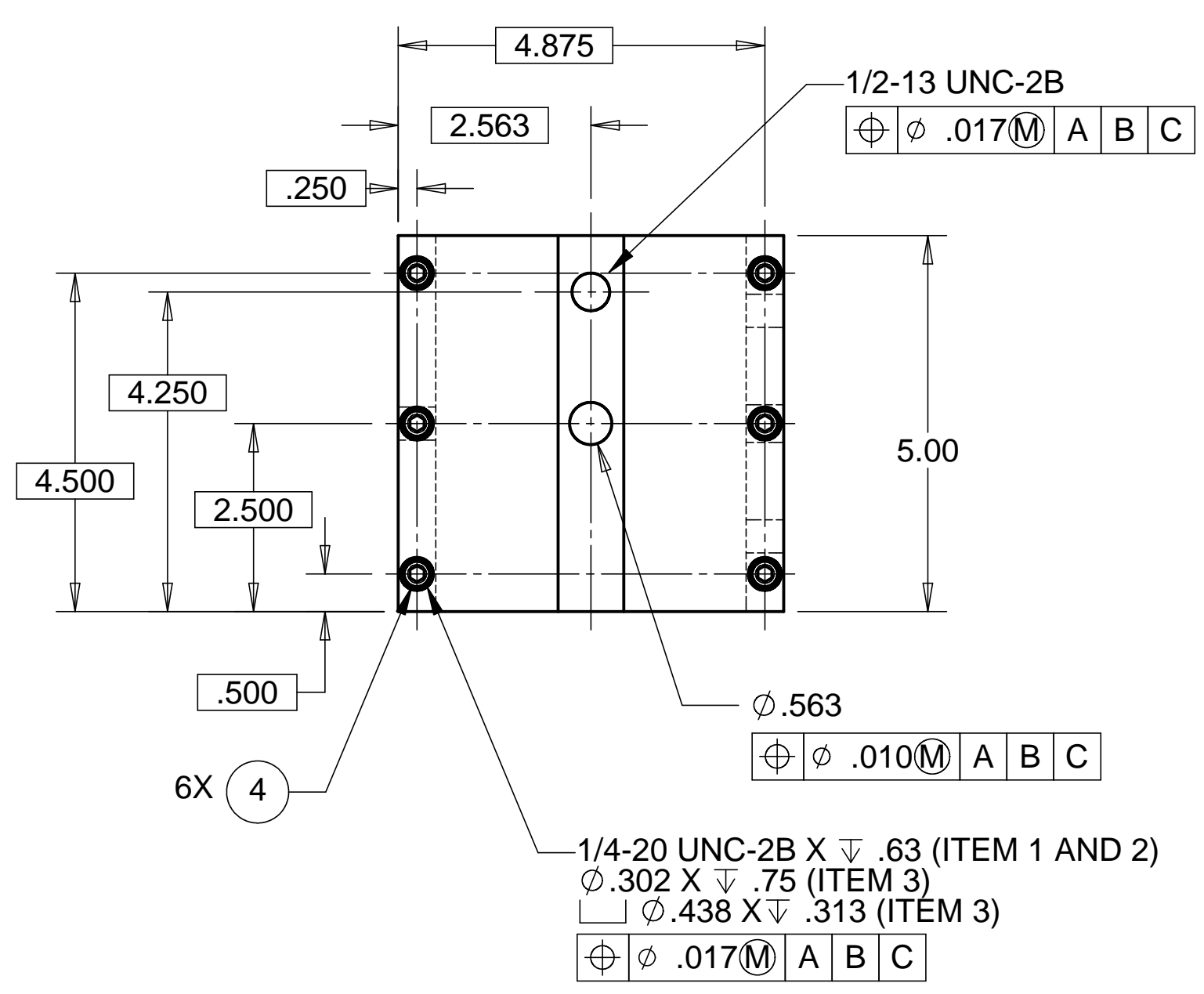
D

D



C

C



B

B

NOTES: UNLESS OTHERWISE SPECIFIED

1. ALL DIMENSIONS IN INCHES
2. DIMENSIONS AND TOLERANCING PER ASME Y14.5M-1994
3. SURFACE TEXTURE PER ANSI/ASME B 46.1-1985
4. REMOVE ALL BURRS AND BREAK SHARP EDGES TO A MAXIMUM OF .015
5. ALL INSIDE CORNERS TO BE .015 RADIUS MAX
6. COUNTERSINK 82 DEGREES ALL TAPPED HOLES TO MAJOR DIAMETER
7. COUNTERSINK 82 DEGREES APPROXIMATELY .015 DEEP ALL DRILLED HOLES
8. PARTS TO BE THOROUGHLY CLEANED TO REMOVE ALL OIL, GREASE, DIRT, AND CHIPS.
9. PART NUMBER (DRAWING NO. PLUS DASH NO. PLUS SERIAL NO.) TO BE CLEARLY MARKED ON THE PART ITSELF.
10. PART WEIGHS 9.0 Lbs.

ITEM NO.	QTY.	DESCRIPTION	MATERIAL
1	1	1/2" THK PLATE	303 SSTL
2	1	1/2" THK PLATE	303 SSTL
3	1	3/4" THK PLATE	303 SSTL
4	6	SOCKET HEAD CAPSCREW, 1/4-20 UNC-2A X 1.00 LONG	SSTL

PARTS LIST				HYTEC, INC	
UNLESS OTHERWISE SPECIFIED: DIMENSIONS ARE IN INCHES -TOLERANCES-		CAD GENERATED DRAWING, DO NOT MANUALLY UPDATE DO NOT SCALE DRAWING		TITLE RAIL SYSTEM TROLLEY	
DECIMALS .XX = +/- .03 .XXX = +/- .010	ANGULAR = +/- 30' SURFACE FINISH = 250	SIGNATURE W. K. MILLER	DATE 1/18/98	DWG. NO. D972946	SIZE SHEET NO. D 1 of 1
FINISH		CHECKED HARRY SALAZAR	2/2/98	SCALE 1/2	REVISION
PART NO. D972946-1		ENGR. T. THOMPSON	2/2/98		
		APPROVED T. THOMPSON	2/2/98		

8 7 6 5 4 3 2 1

A

A