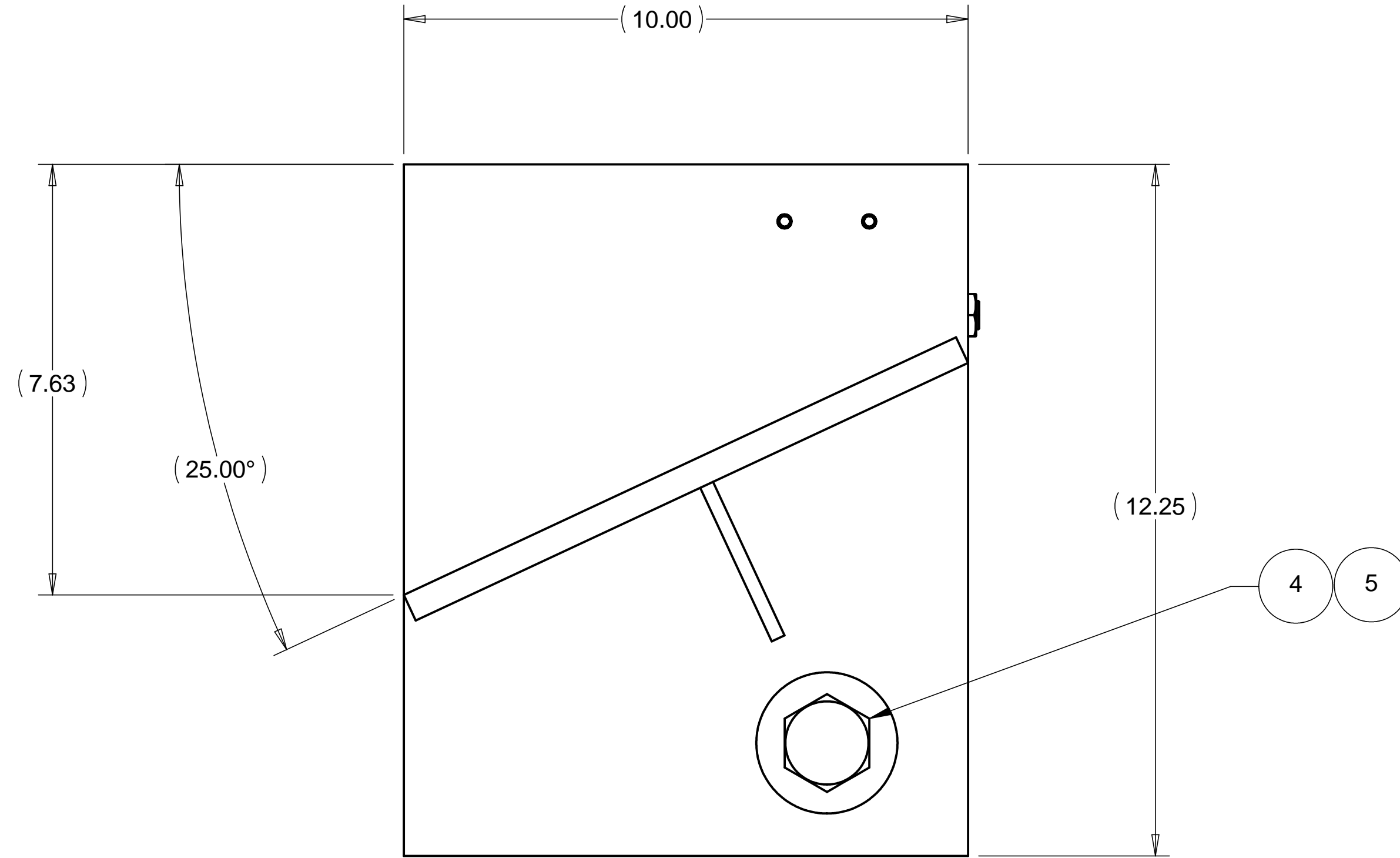
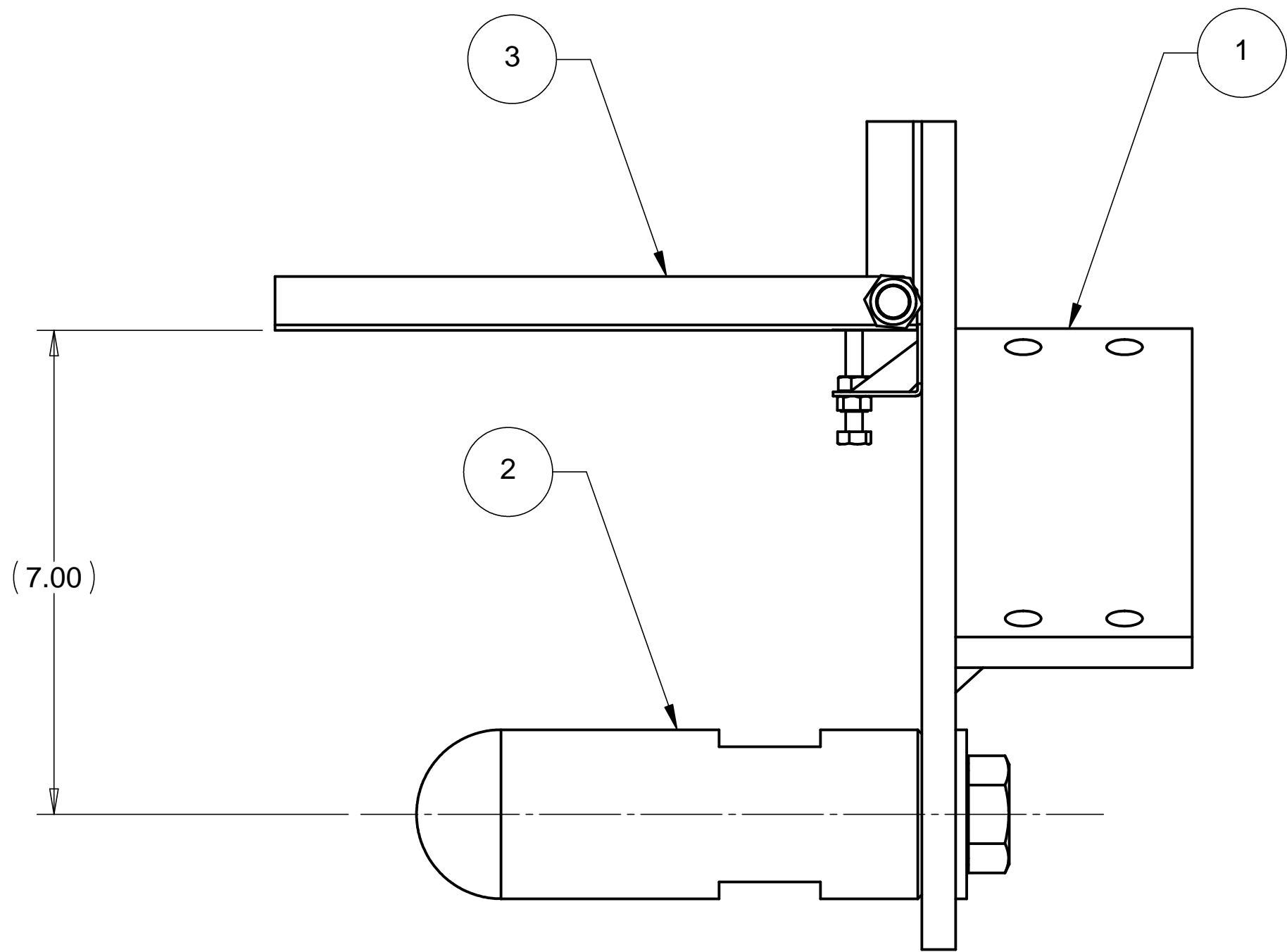
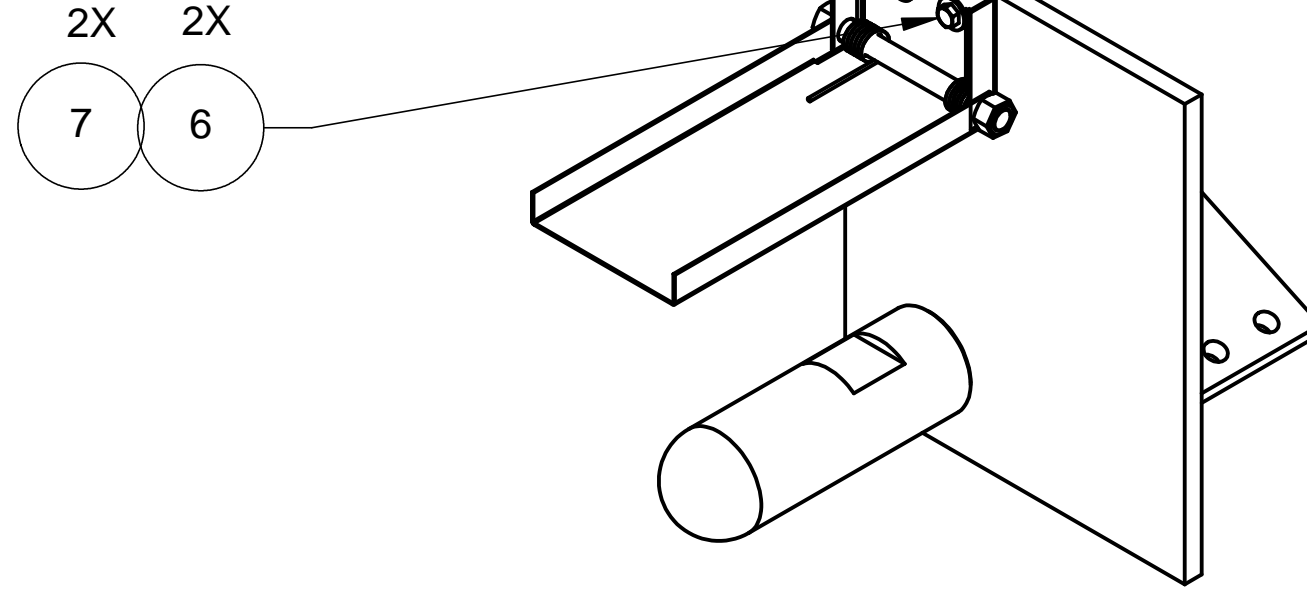


8 7 6 5 4 3 2 1

REVISIONS			
REV.	DESCRIPTION	DATE	APPROVED



WEIGHT: 34.02 lbs

ITEM NO.	QTY.	PART NO.	DESCRIPTION
1	1	D972959-1	HAM CENTERING JIG, RIGHT SIDE
2	1	D972957-1	HAM CENTERING JIG, POINT CONTACT
3	1	D972891-1	HAM CENTERING JIG, Z-ELEVATION STAGE
4	1		BOLT, HEX HD 1-8 UNC-2B X 1.25 LG., STAINLESS STEEL
5	1		WASHER, REGULAR 1.00 DIA., STAINLESS STEEL
6	2		SCREW, HEX HD .250-20 UNC-2B X .50 LG., STAINLESS STEEL
7	2		WASHER, REGULAR .250 DIA., STAINLESS STEEL

PARTS LIST

UNLESS OTHERWISE SPECIFIED: DIMENSIONS ARE IN INCHES -TOLERANCES-  DECIMALS            ANGULAR = +/- .30° .X                      = +/- .1 .XX                     = +/- .03 .XXX = +/- .010            SURFACE FINISH = 250	CAD GENERATED DRAWING, DO NOT MANUALLY UPDATE DO NOT SCALE DRAWING		<b>HYTEC, INC</b>  TITLE <b>HAM CENTERING JIG          RIGHT SIDE          SUB-ASSEMBLY</b>
	FINISH   PART NO. <b>D972890-1</b>	SIGNATURE ROGER L. SMITH GERALD BUSTOS HARRY SALAZAR T. THOMPSON T. THOMPSON	
DWG. NO. <b>D972890</b>		SCALE 1/2	SHEET NO. <b>1 of 1</b>  REVISION

8 7 6 5 4 3 2 1