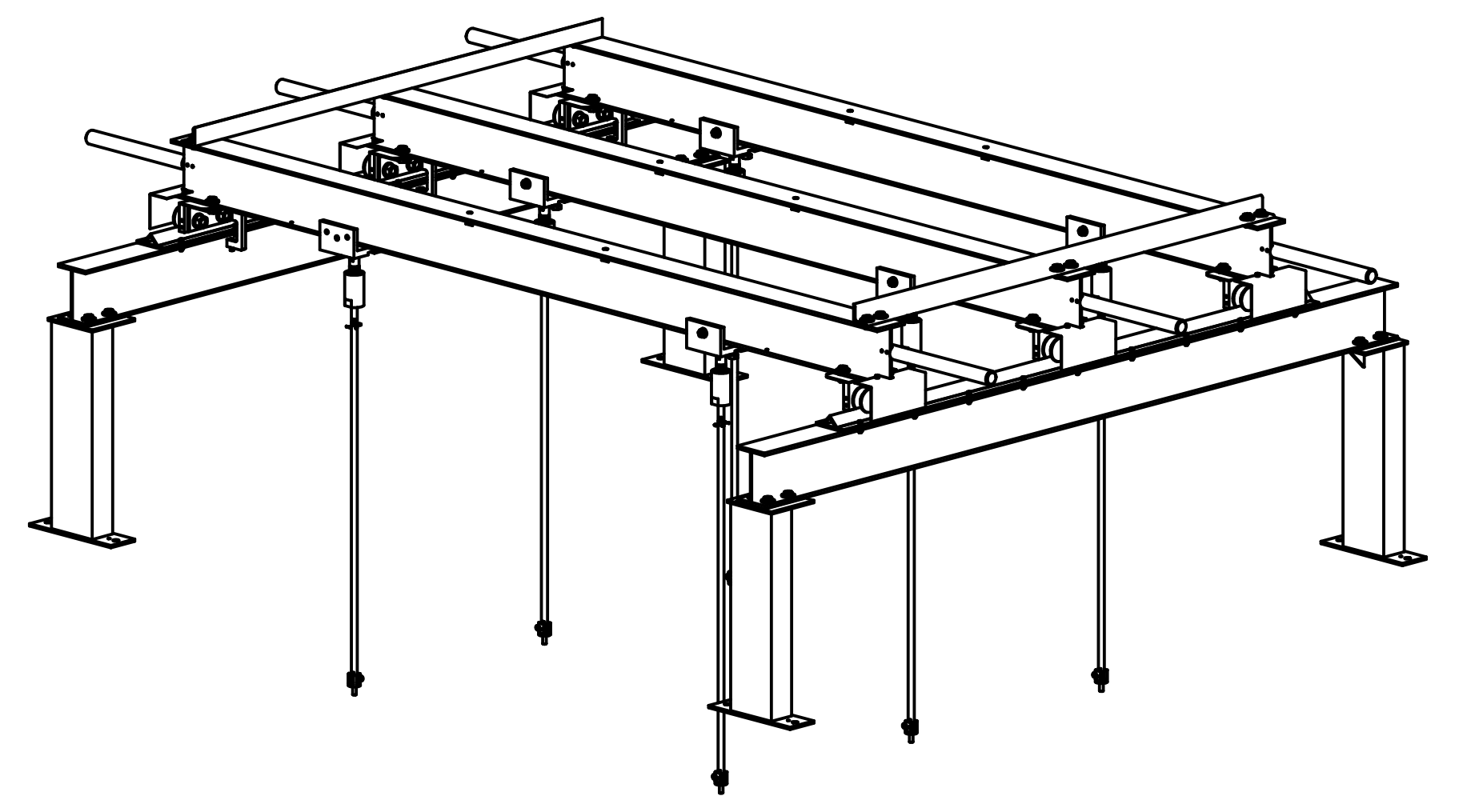
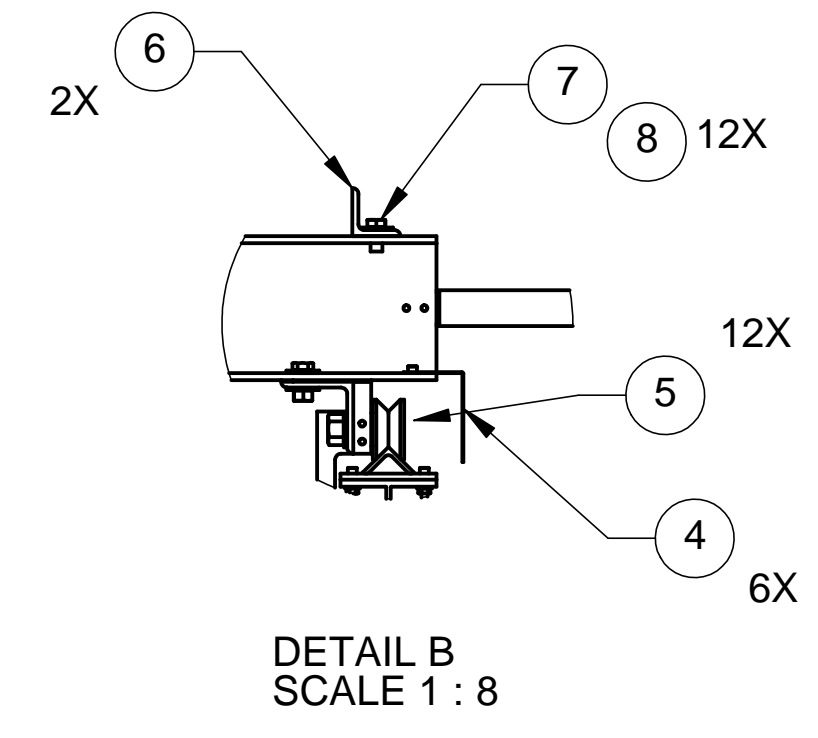
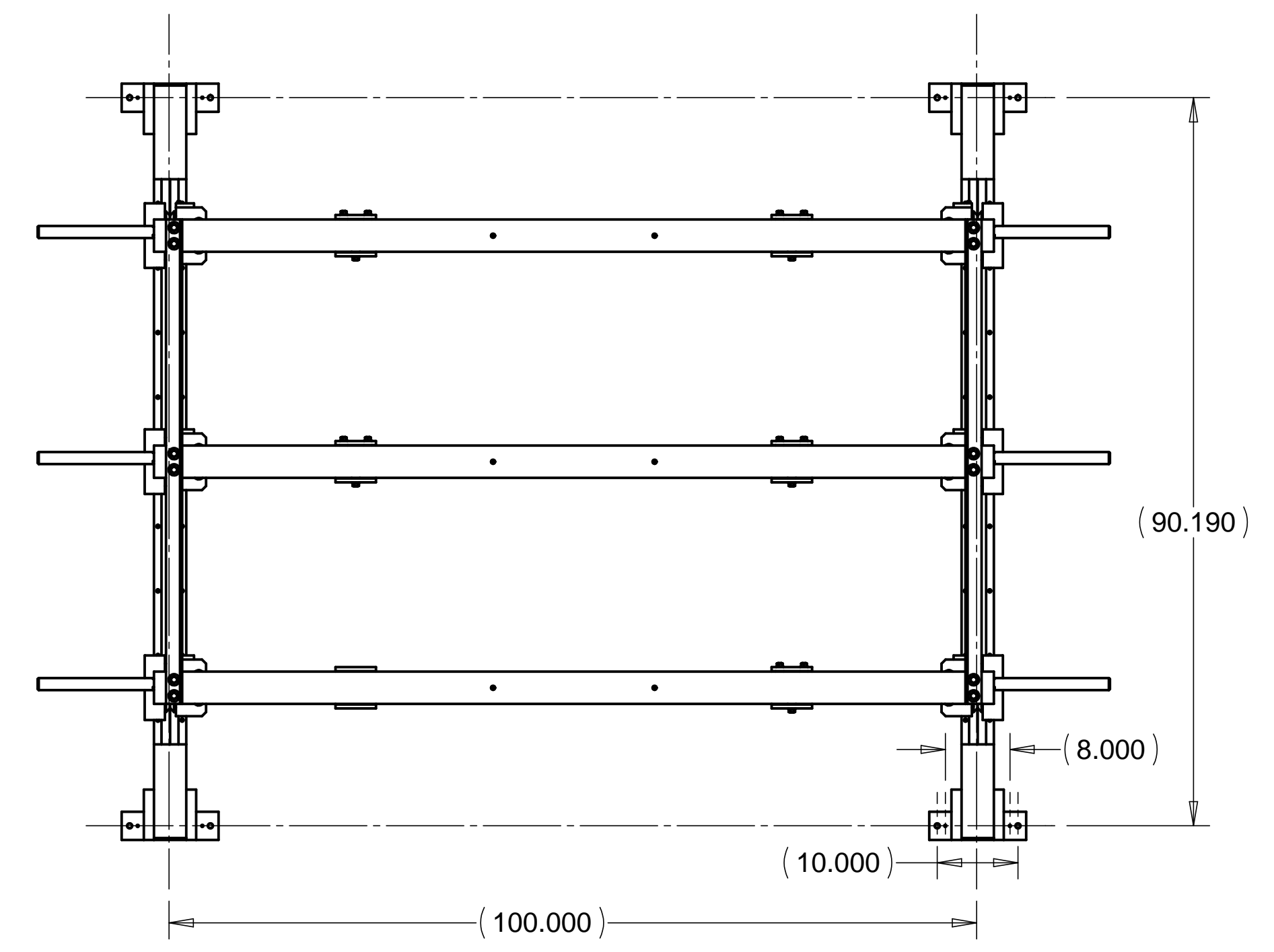


8 7 6 5 4 3 2 1

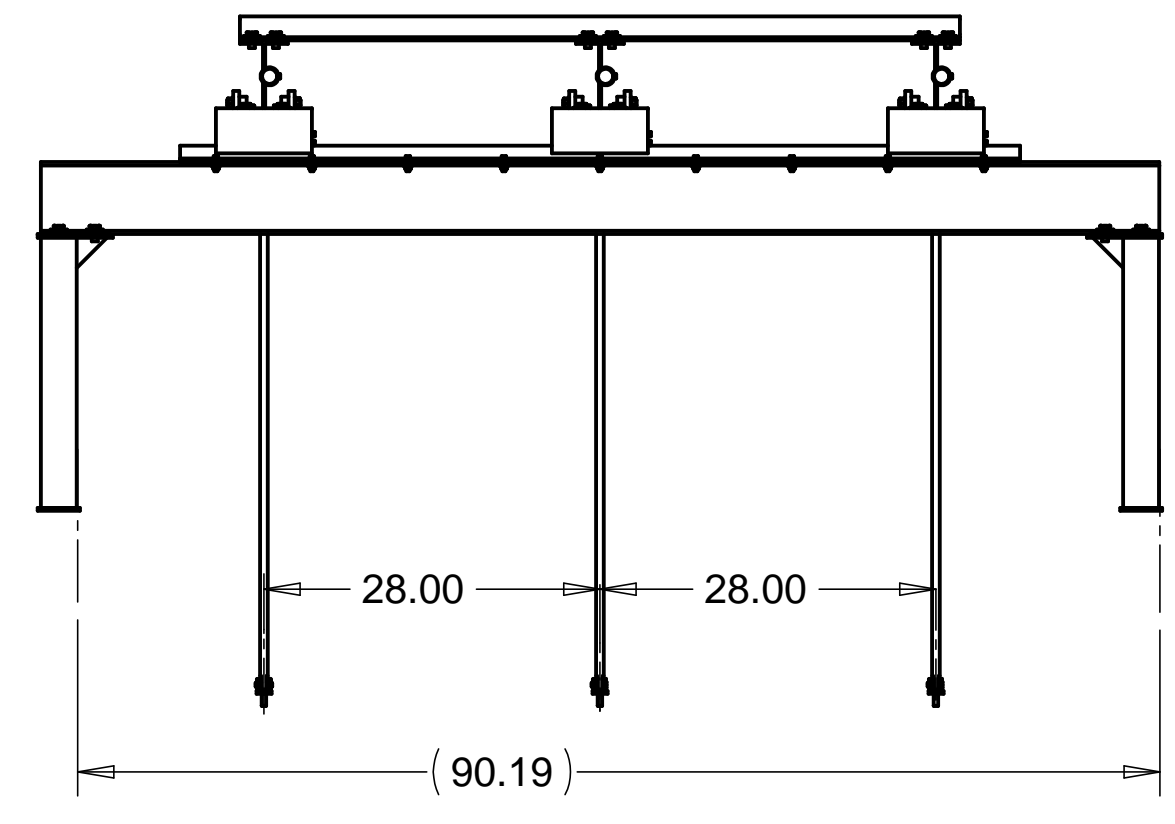
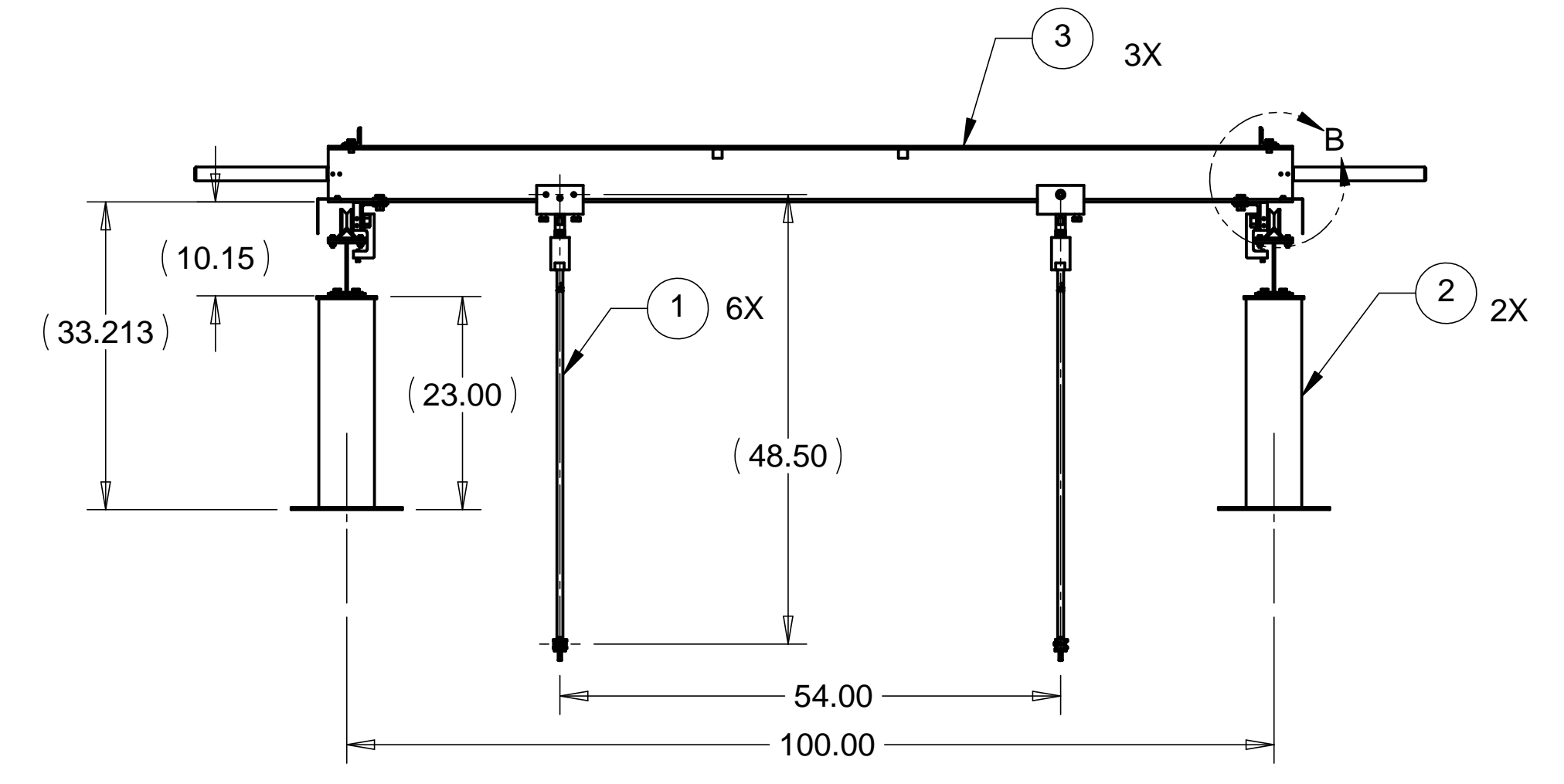
REVISIONS			
REV.	DESCRIPTION	DATE	APPROVED
A	CORRECTED PART NO.	3-16-98	WKM

D



D

C



C

B

B

NOTES: UNLESS OTHERWISE SPECIFIED

1. ALL DIMENSIONS IN INCHES
2. DIMENSIONS AND TOLERANCING PER ASME Y14.5M-1994
3. SURFACE TEXTURE PER ANSI/ASME B 46.1-1985
4. REMOVE ALL BURRS AND BREAK SHARP EDGES TO A MAXIMUM OF .015
5. ALL INSIDE CORNERS TO BE .015 RADIUS MAX
6. COUNTERSINK 82 DEGREES ALL TAPPED HOLES TO MAJOR DIAMETER
7. COUNTERSINK 82 DEGREES APPROXIMATELY .015 DEEP ALL DRILLED HOLES
8. PARTS TO BE THOROUGHLY CLEANED TO REMOVE ALL OIL, GREASE, DIRT, AND CHIPS.
9. PART NUMBER (DRAWING NO. PLUS DASH NO. PLUS SERIAL NO.) TO BE CLEARLY MARKED ON THE PART ITSELF.
10. PART WEIGHS 615 Lbs.

ITEM NO.	QTY.	PART NO.	DESCRIPTION
1	6	D972888-1	HAM RAIL SYSTEM TROLLEY AND LINKAGE ASSEMBLY
2	2	D972886-1	HAM RAIL SYSTEM MAJOR RAIL ASSEMBLY
3	3	D972887-1	HAM RAIL SYSTEM MINOR RAIL ASSEMBLY
4	6	D972944-1	MINOR RAIL ROLLER COVERPLATE
5	12	STD HARDWARE	SOCKET HEAD CAP SCREW, 1/4-20 UNC-2A X .50 LONG
6	2	D972936-1	HAM RAIL SYSTEM MINOR RAIL TIE DOWN ANGLE BRACKET
7	12	STD HARDWARE	WASHER, 1/2 FLAT
8	12	STD HARDWARE	HEX HEAD BOLT, 1/2-13 UNC-2A X .50 LONG

PARTS LIST

UNLESS OTHERWISE SPECIFIED: DIMENSIONS ARE IN INCHES -TOLERANCES-		CAD GENERATED DRAWING, DO NOT MANUALLY UPDATE DO NOT SCALE DRAWING		<b>HYTEC, INC</b> TITLE <b>HAM RAIL SYSTEM ASSEMBLY</b>	
DECIMALS .XX = +/- .03 .XXX = +/- .010	ANGULAR = +/- .30° SURFACE FINISH = 250				
FINISH	SIGNATURE		DATE	DWG. NO. <b>D972885</b> SIZE <b>D</b> SHEET NO. <b>1 of 1</b> SCALE 1/16      REVISION <b>A</b>	
	DESIGNED	W. K. MILLER	1/3/97		
	DRAWN	W. K. MILLER	1/3/97		
	CHECKED	HARRY SALAZAR	2/4/98		
PART NO. <b>D972885-1</b>	ENGR.	T. THOMPSON	2/4/98		
	APPROVED	T. THOMPSON	2/4/98		

8 7 6 5 4 3 2 1

A

A