

8 7 6 5 4 3 2 1

REVISIONS			
REV.	DESCRIPTION	DATE	APPROVED
A	WELD SYMBOLS, AND PAINT SPECIFICATION	3-16-98	WKM

D

D

C

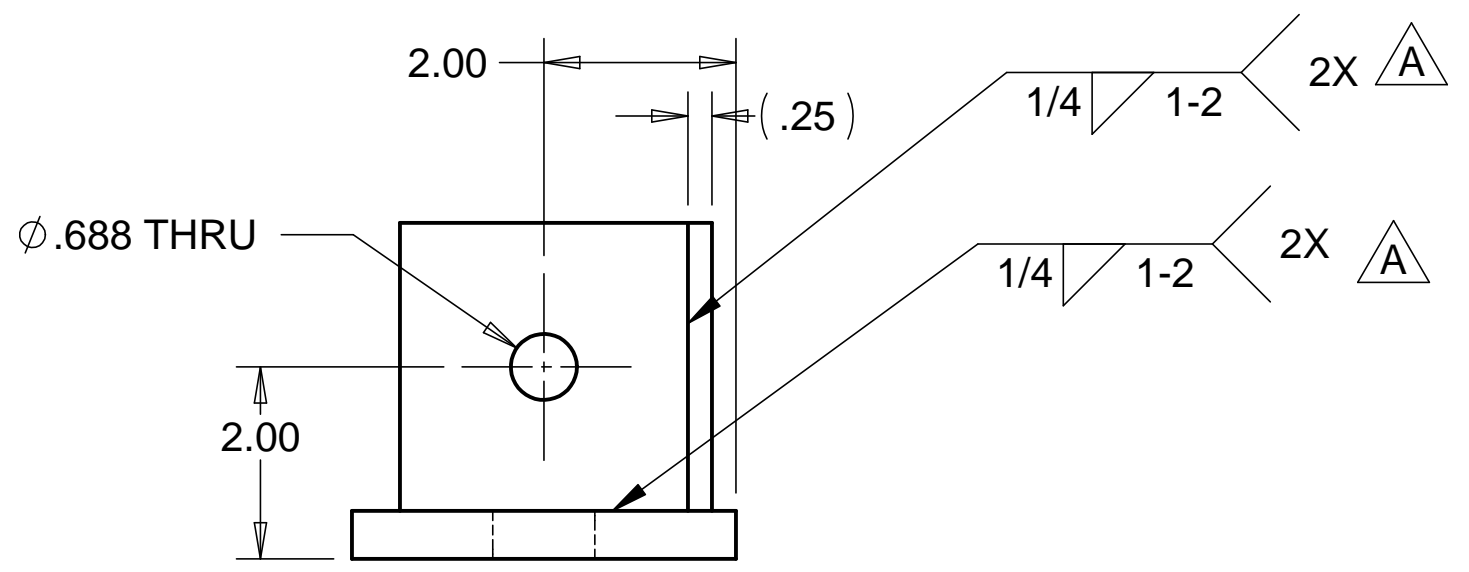
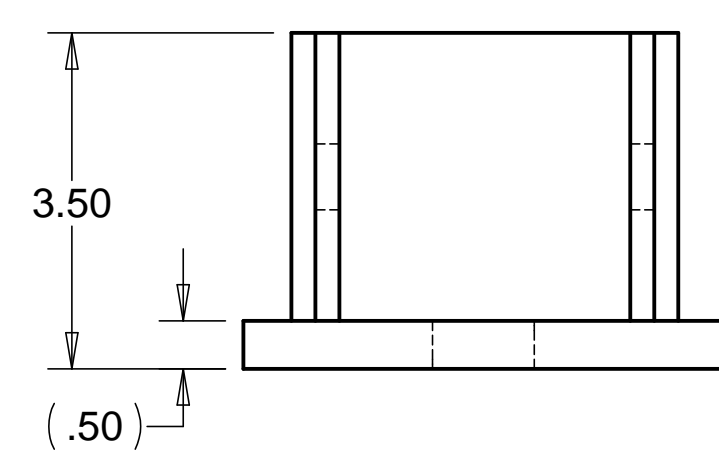
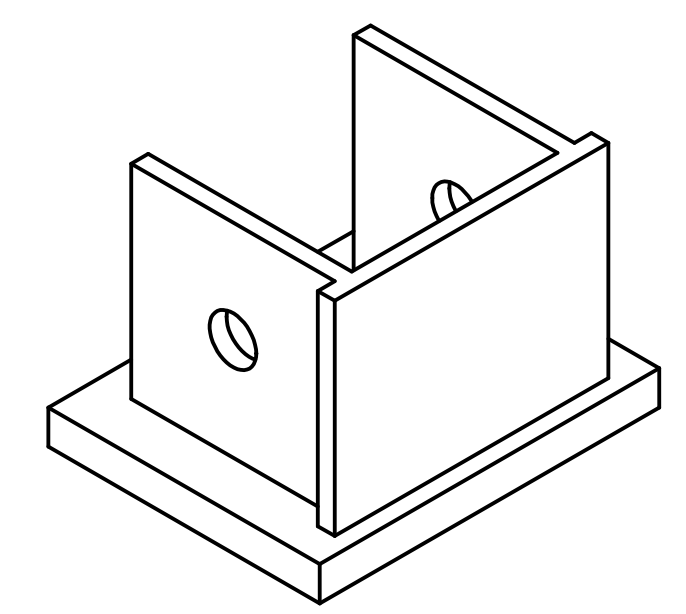
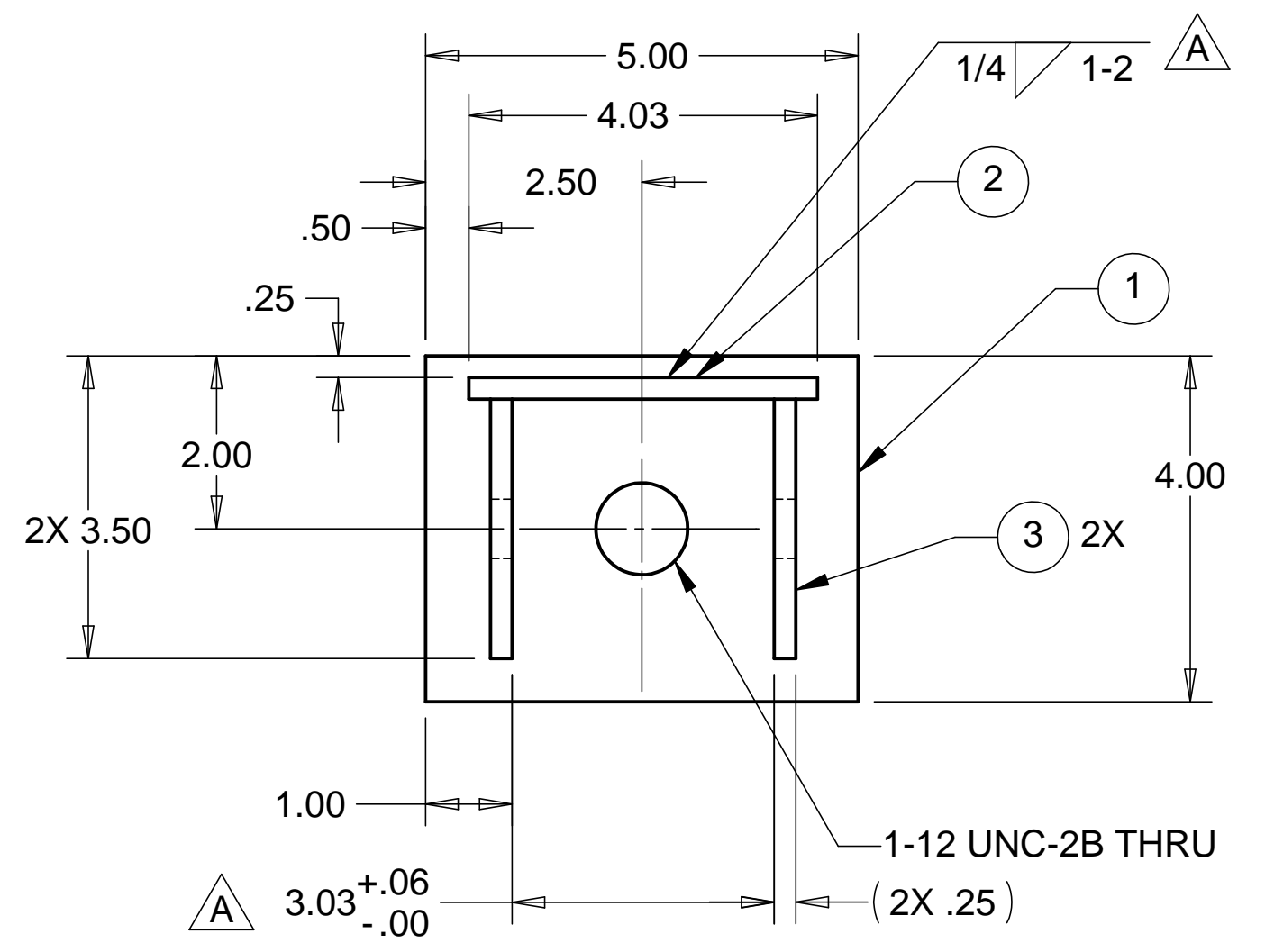
C

B

B

A

A



NOTES: UNLESS OTHERWISE SPECIFIED

- ALL DIMENSIONS IN INCHES
- DIMENSIONS AND TOLERANCING PER ASME Y14.5M-1994
- SURFACE TEXTURE PER ANSI/ASME B 46.1-1985
- REMOVE ALL BURRS AND BREAK SHARP EDGES TO A MAXIMUM OF .015
- ALL INSIDE CORNERS TO BE .015 RADIUS MAX
- COUNTERSINK 82 DEGREES ALL TAPPED HOLES TO MAJOR DIAMETER
- COUNTERSINK 82 DEGREES APPROXIMATELY .015 DEEP ALL DRILLED HOLES
- PARTS TO BE THOROUGHLY CLEANED TO REMOVE ALL OIL, GREASE, DIRT AND CHIPS
- PART NUMBER (DRAWING NO. PLUS DASH NO. PLUS SERIAL NO.) TO BE CLEARLY MARKED ON THE PART ITSELF.
- PART WEIGHS 4.9 Lbs.
- PRIMER (ALL VISIBLE SURFACES): SHERMAN WILLIAMS INDUSTRIAL WASH PRIMER PG062.
- PAINT (ALL VISIBLE SURFACES): SHERMAN WILLIAMS POLANE T POLYURETHANE COLOR BASIN, COLOR #F63TXL-4054-4352 FLAT.

ITEM NO.	QTY.	DESCRIPTION	MATERIAL
1	1	1/2" THK PLATE	1010 STEEL
2	1	1/4" THK PLATE	1010 STEEL
3	2	1/4" THK PLATE	1010 STEEL

PARTS LIST				TITLE	
UNLESS OTHERWISE SPECIFIED: DIMENSIONS ARE IN INCHES -TOLERANCES-		CAD GENERATED DRAWING, DO NOT MANUALLY UPDATE DO NOT SCALE DRAWING		HYTEC, INC	
DECIMALS .XX = +/- .06 .XXX = +/- .010	ANGULAR = +/- 30' SURFACE FINISH = 250	SIGNATURE	DATE	BSC ROLLER SYSTEM ADJUSTABLE FOOT BASEPLATE	
FINISH	DESIGNED	W. K. MILLER	2/7/98	DWG. NO.	SIZE SHEET NO.
PART NO. D972442-1	DRAWN	W. K. MILLER	2/7/98	D972442	D 1 of 1
	CHECKED	HARRY SALAZAR	3-16-98		
	ENGR.	T. THOMPSON	3-16-98		
APPROVED	T. THOMPSON	3-16-98	SCALE 1/2	REVISION A	

8 7 6 5 4 3 2 1