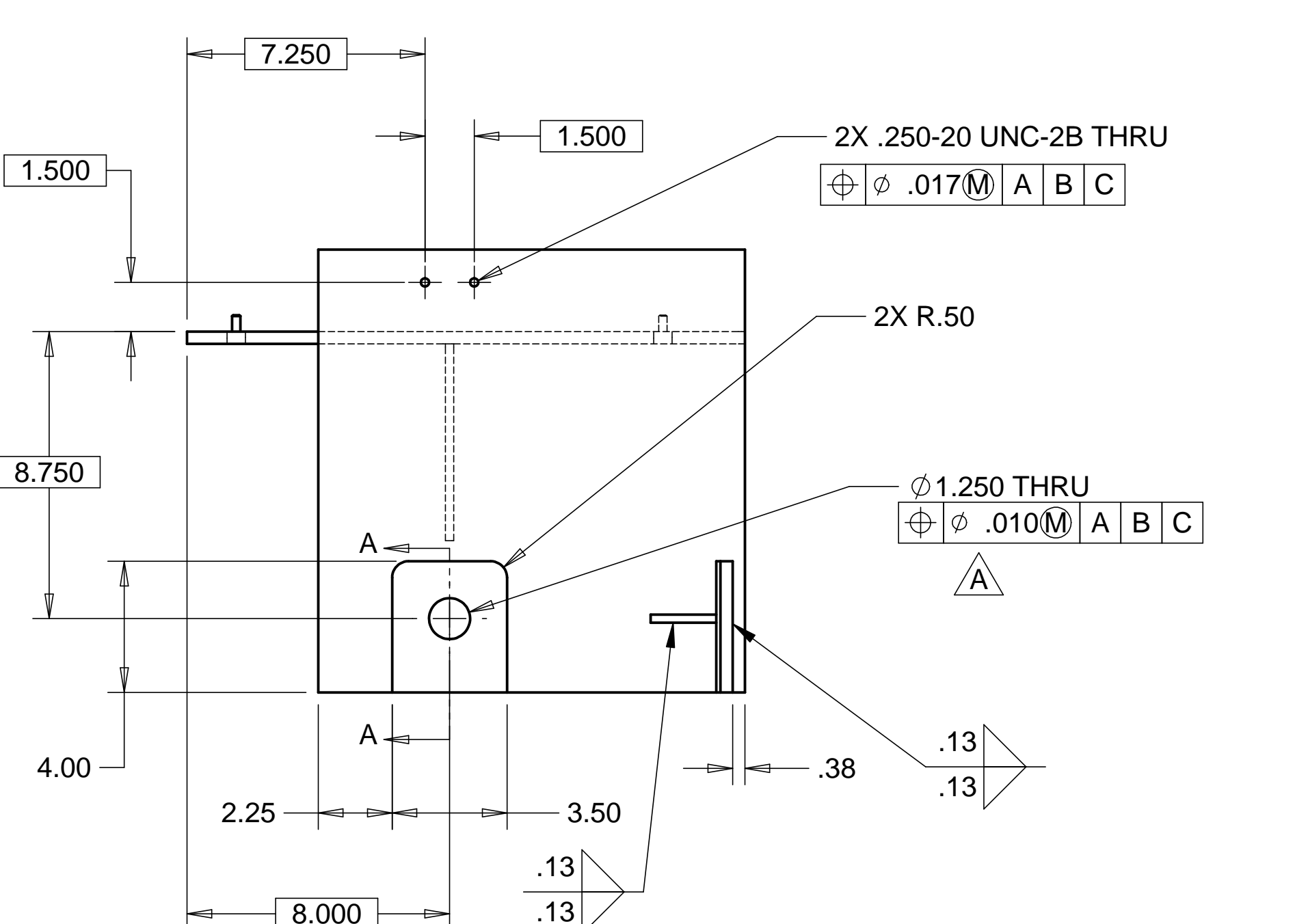
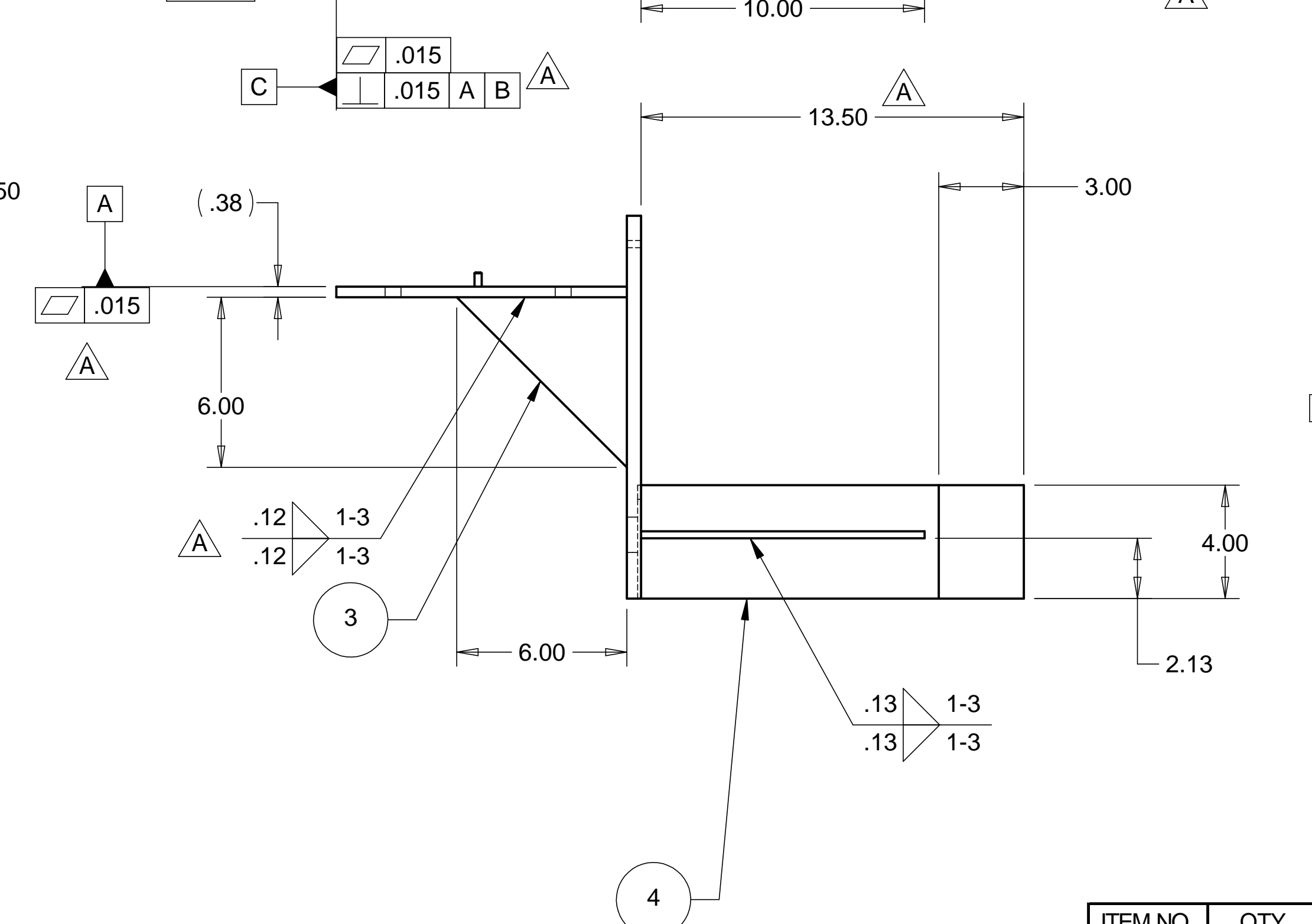
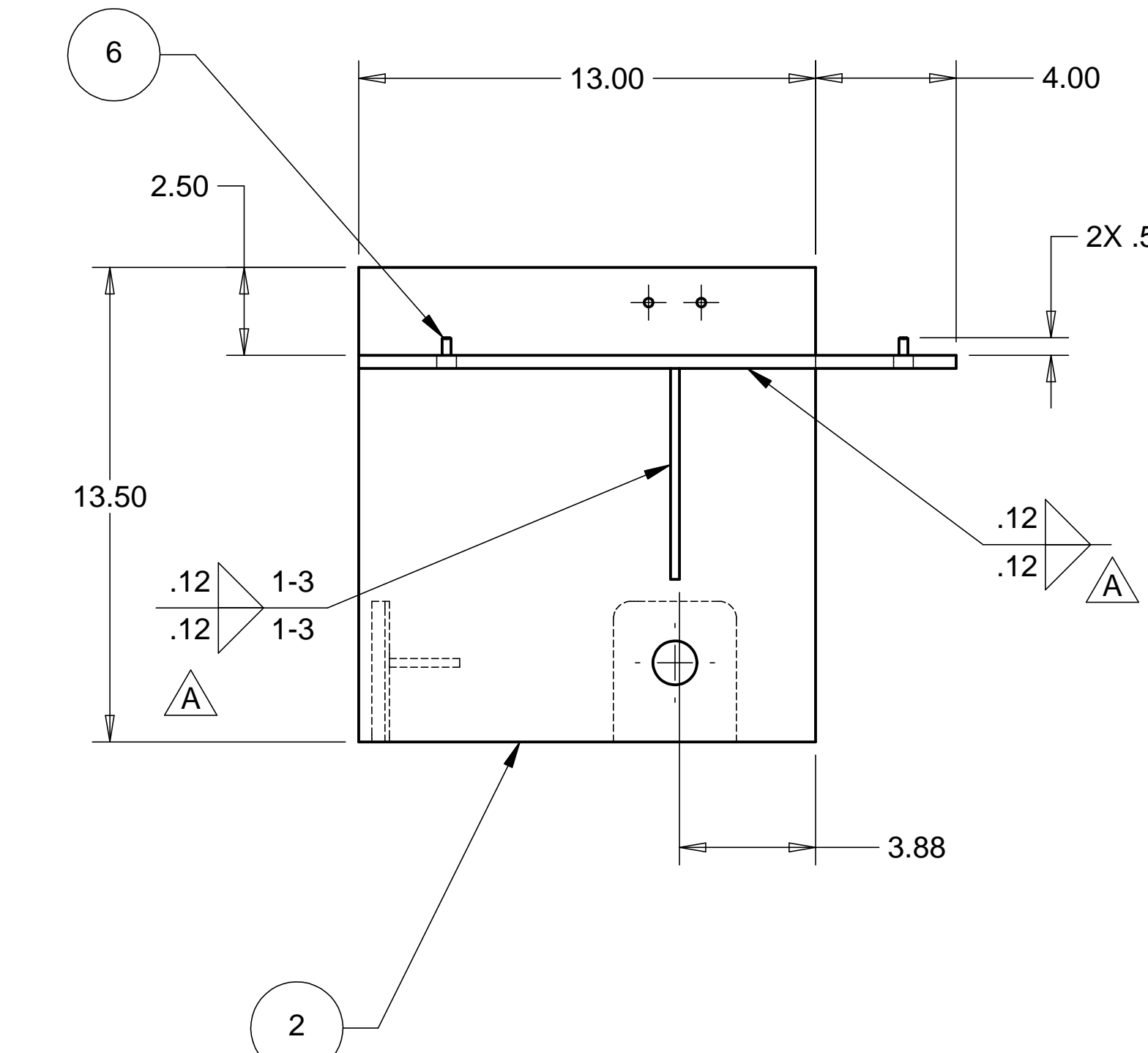
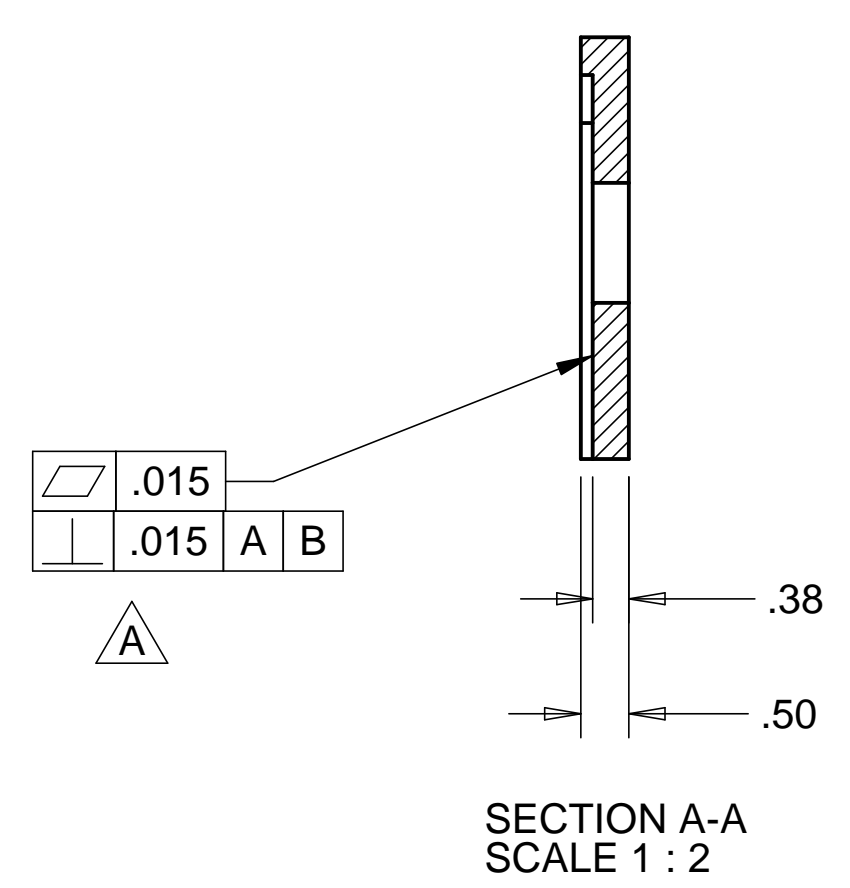
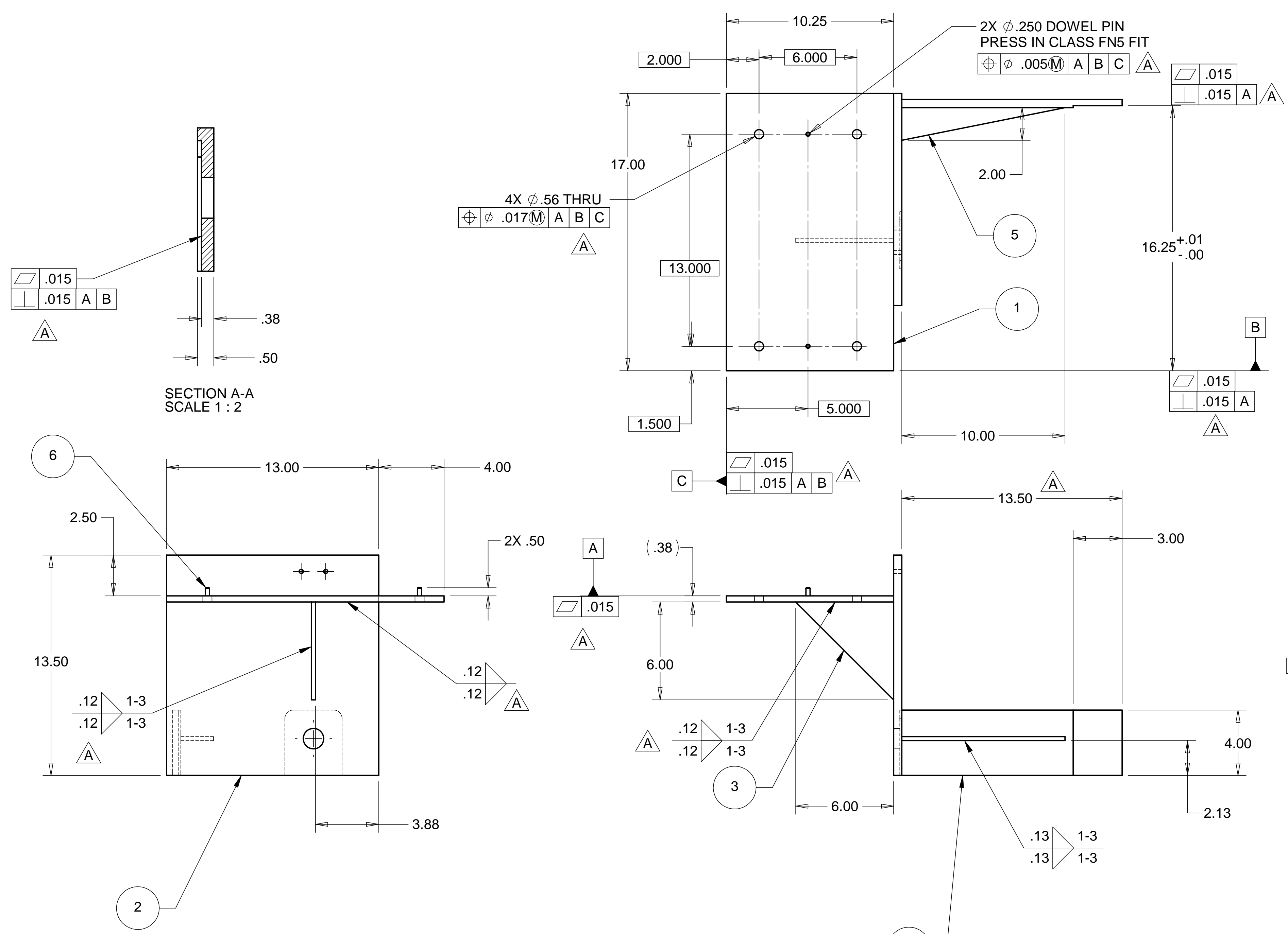
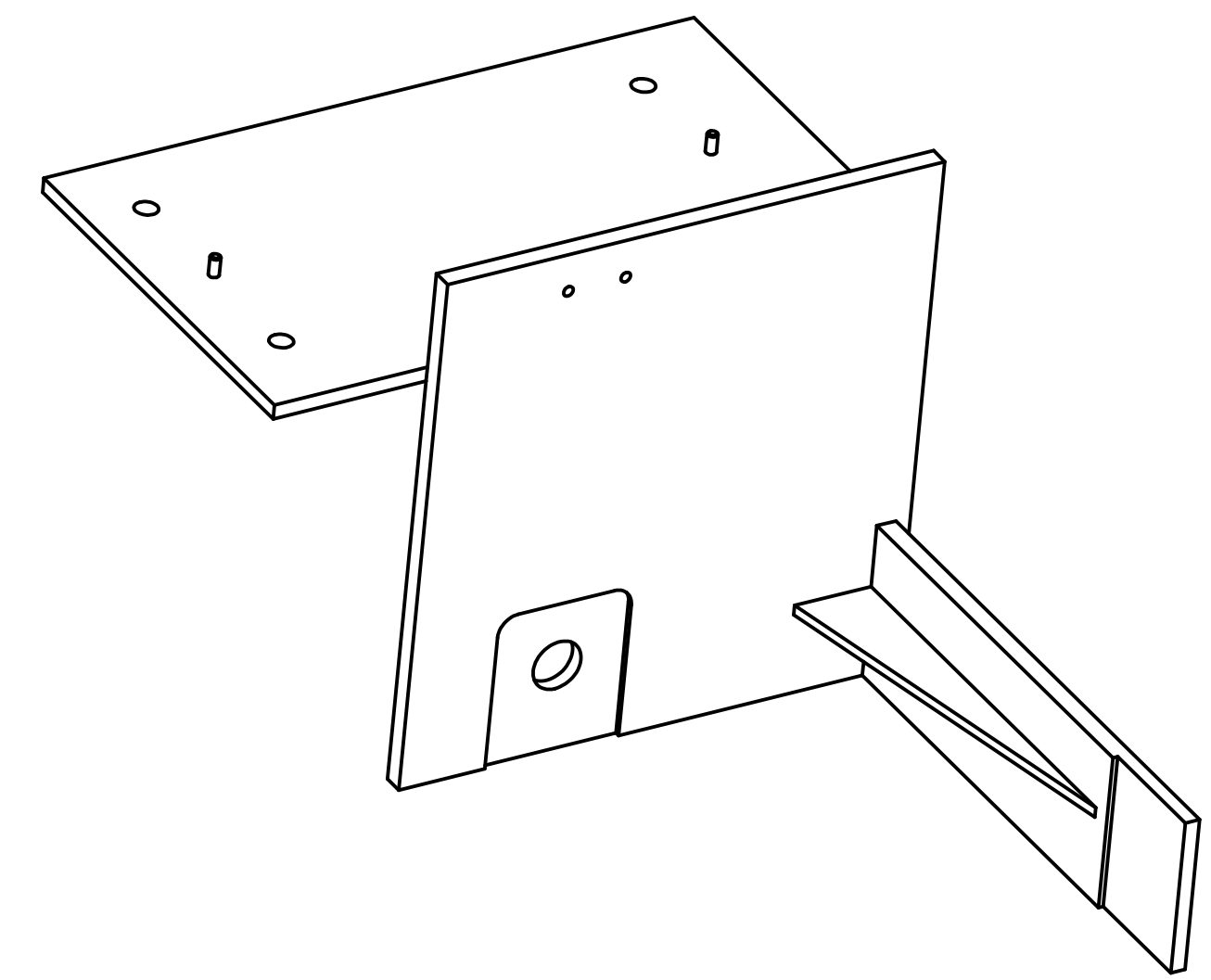


REVISIONS			DATE	APPROVED
REV.	DESCRIPTION			
A	SEE ECN FOR CHANGES		3-20-98	WKM



NOTES: UNLESS OTHERWISE SPECIFIED

- ALL DIMENSIONS IN INCHES
- DIMENSIONS AND TOLERANCING PER ANSI Y14.5M-1994
- SURFACE TEXTURE PER ANI/ASME B 46.1-1985
- REMOVE ALL BURRS AND BREAK SHARP EDGES TO A MAXIMUM OF .015
- ALL INSIDE CORNERS TO BE .015 RADIUS MAX
- COUNTERSINK 82 DEGREES ALL TAPPED HOLES TO MAJOR DIAMETER
- COUNTERSINK 82 DEGREES APPROXIMATELY .015 DEEP ALL DRILLED HOLES
- PARTS TO BE THOROUGHLY CLEANED TO REMOVE ALL OIL, GREASE, DIRT AND CHIPS
- PART NUMBER (DRAWING NO. PLUS DASH NO. PLUS SERIAL NO.) TO BE CLEARLY MARKED ON THE PART ITSELF.
- PART WEIGHS 63 Lbs.

ITEM NO.	QTY.	DESCRIPTION	MATERIAL
1	1	PLATE, .375 THK.	303 STAINLESS STEEL
2	1	PLATE, .50 THK.	303 STAINLESS STEEL
3	1	PLATE, .25 THK.	303 STAINLESS STEEL
4	1	PLATE, .50 THK.	303 STAINLESS STEEL
5	1	PLATE, .25 THK.	303 STAINLESS STEEL
6	2	PIN, DOWEL .25 DIA. X 1.0 LG.	McMASTER #98381A542

UNLESS OTHERWISE SPECIFIED: DIMENSIONS ARE IN INCHES -TOLERANCES-			PARTS LIST		HYTEC, INC TITLE BSC CENTERING JIG LEFT SIDE WELDMENT
DECIMALS: X = +/- .1 XX = +/- .03 XXX = +/- .010	ANGULAR = +/- .30° SURFACE FINISH = 250				
FINISH		SIGNATURE	DATE		
		DESIGNED	W. K. MILLER	1-14-98	
		DRAWN	GERALD BUSTOS	1-14-98	
		CHECKED	HARRY SALAZAR	3-14-98	
		ENGR.	T. THOMPSON	3-14-98	
		APPROVED	T. THOMPSON	3-14-98	
PART NO. D972422-1					DWG. NO. D972422
					SCALE 1/2
					SIZE SHEET NO. D 1 of 1
					REVISION A