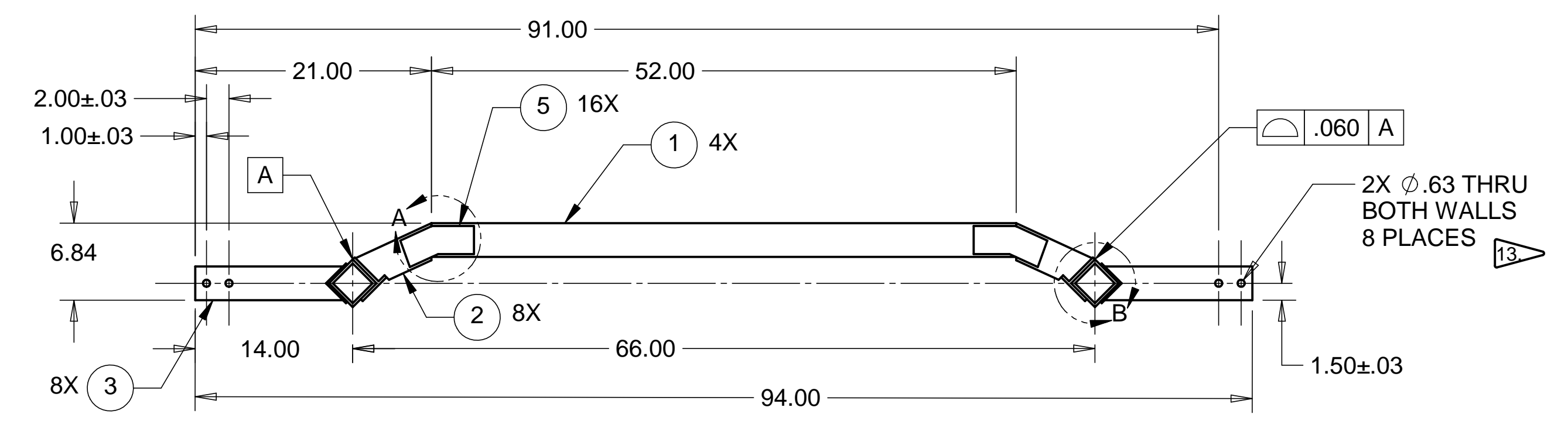
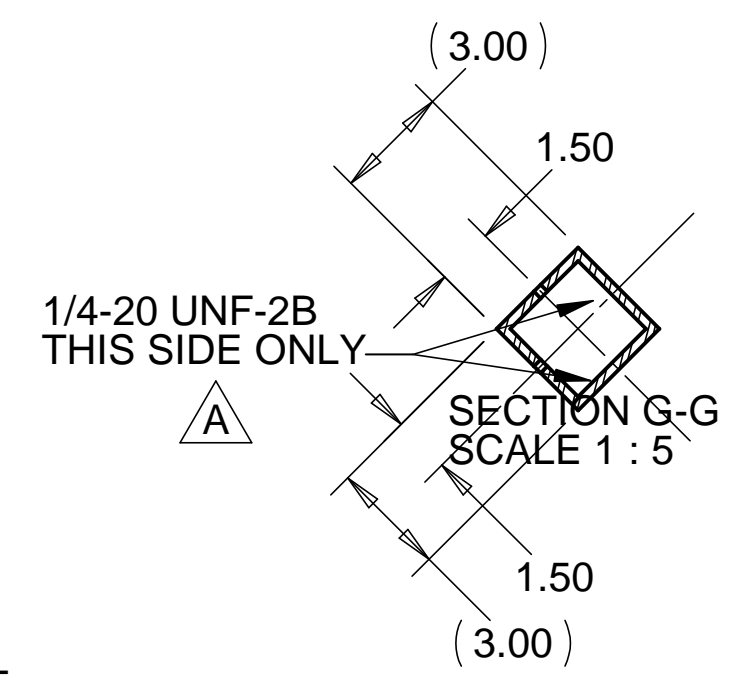
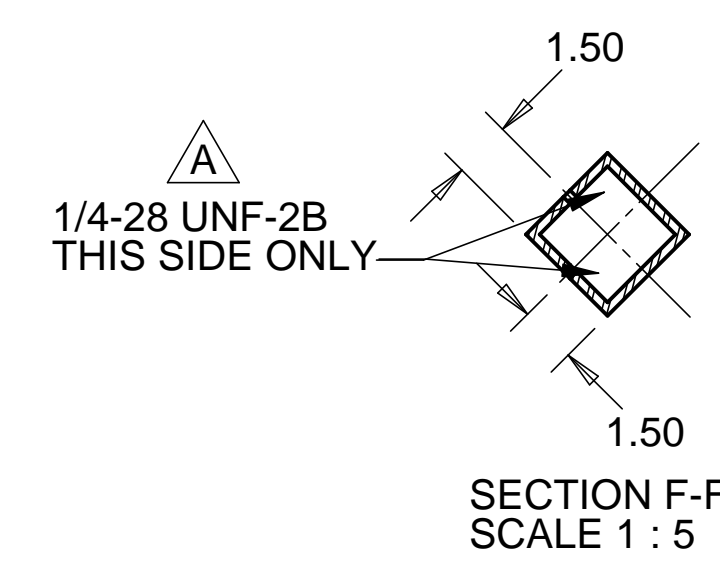
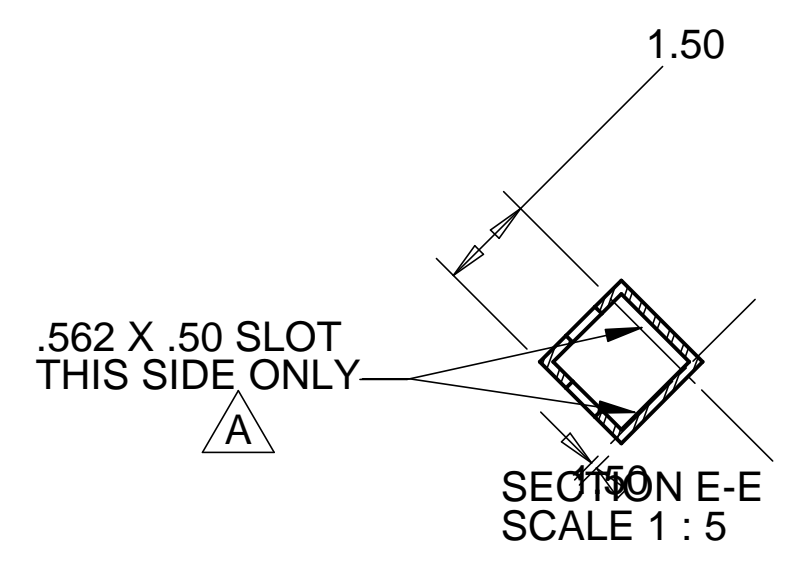
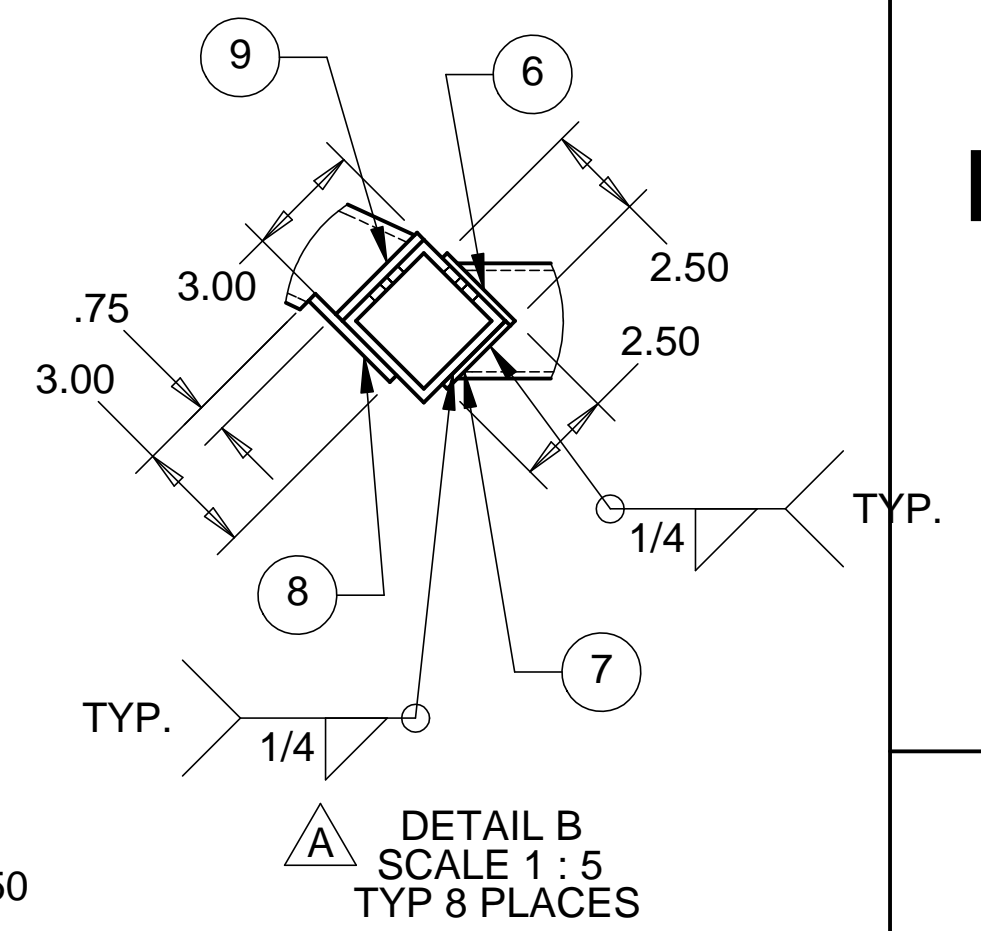
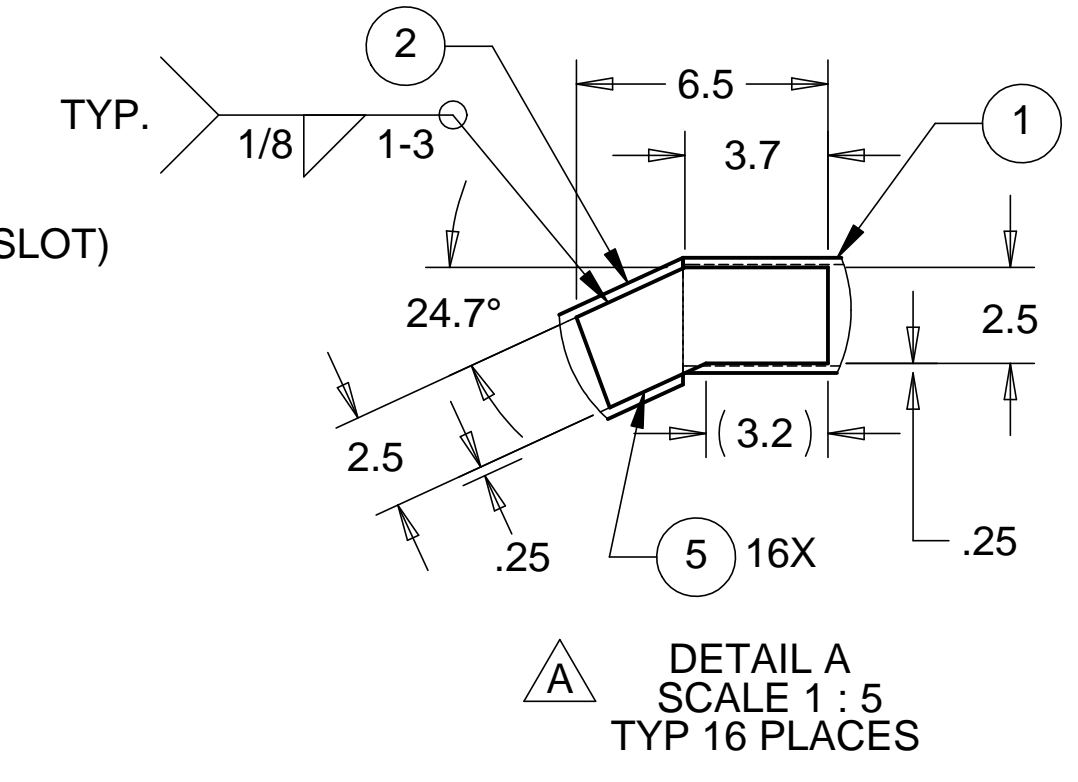
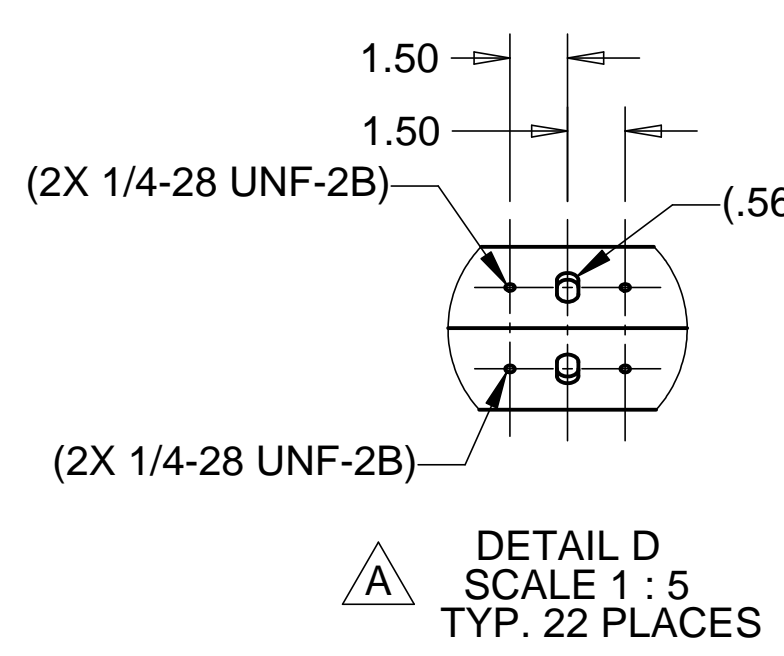
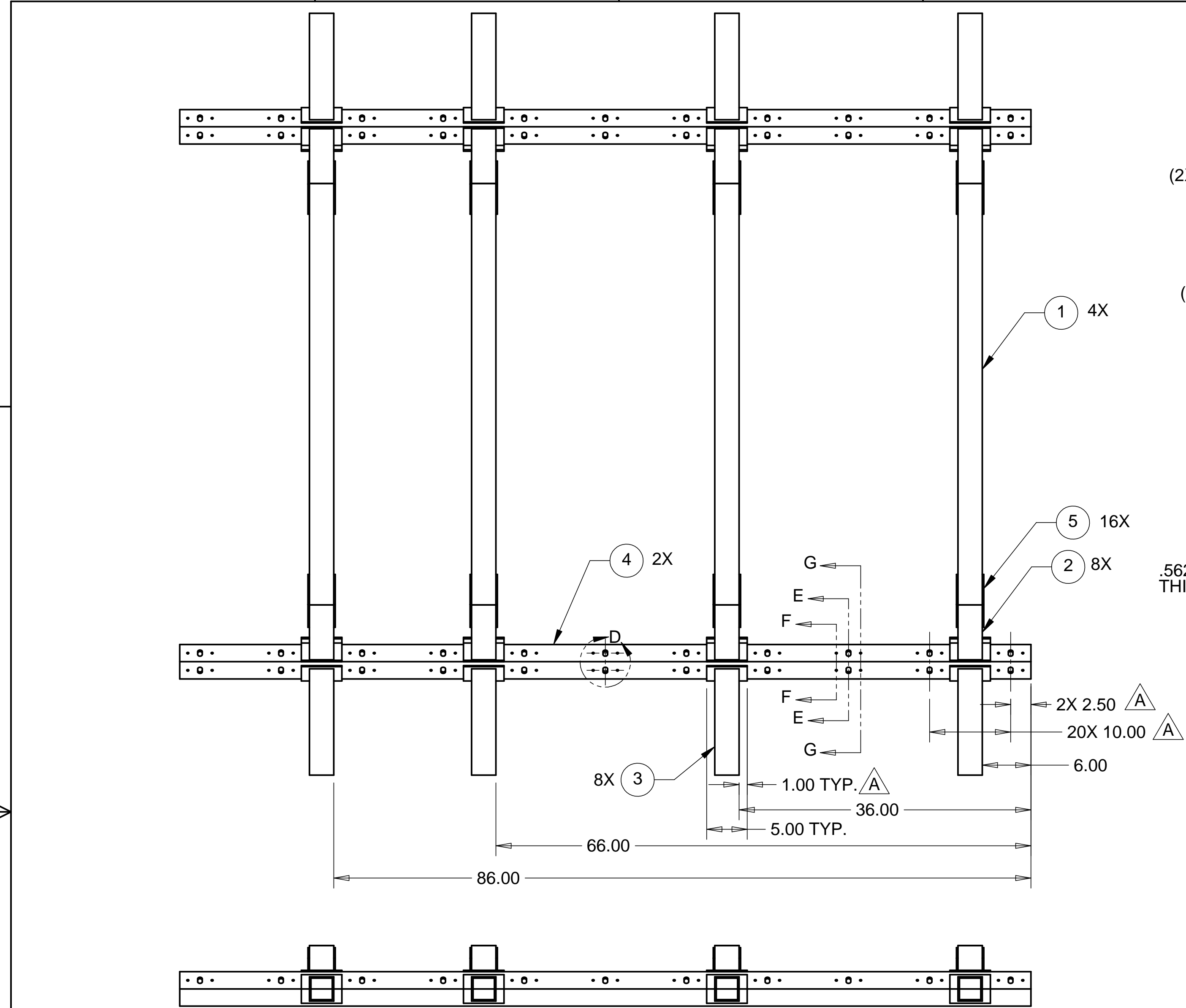


REV.	DESCRIPTION	DATE	APPROVED
A	ASSORTED TEXT CHANGES	3-16-98	WKM



NOTES: UNLESS OTHERWISE SPECIFIED

1. ALL DIMENSIONS IN INCHES
2. DIMENSIONS AND TOLERANCING PER ASME Y14.5M-1994
3. SURFACE TEXTURE PER ANSI/ASME B 46.1-1985
4. REMOVE ALL BURRS AND BREAK SHARP EDGES TO A MAXIMUM OF .015
5. ALL INSIDE CORNERS TO BE .015 RADIUS MAX
6. COUNTERSINK 82 DEGREES ALL TAPPED HOLES TO MAJOR DIAMETER
7. COUNTERSINK 82 DEGREES APPROXIMATELY .015 DEEP ALL DRILLED HOLES
8. PARTS TO BE THOROUGHLY CLEANED TO REMOVE ALL OIL, GREASE, DIRT AND CHIPS
9. PART NUMBER (DRAWING NO. PLUS DASH NO. PLUS SERIAL NO.) TO BE CLEARLY MARKED ON THE PART ITSELF.
10. PART WEIGHTS 425.0 Lbs.
11. PRIMER (ALL VISIBLE SURFACES): SHERMAN WILLIAMS INDUSTRIAL WASH PRIMER PG062.
12. PAINT (ALL VISIBLE SURFACES): SHERMAN WILLIAMS POLANE T POLYURETHANE COLOR BASIN, COLOR #F63TXL-4054-4352 FLAT.
13. MATCH DRILL HOLES IN ITEM 3 TO PART D972392-1 AND -2.

ITEM NO.	QTY.	DESCRIPTION	MATERIAL
1	4	TUBING, 3 X 3 X .18 WALL	A36 STEEL
2	8	TUBING, 3 X 3 X .18 WALL	A36 STEEL
3	8	TUBING, 3 X 3 X .25 WALL	A36 STEEL
4	2	TUBING, 3 X 3 X .25 WALL	A36 STEEL
5	16	PLATE, .125 THK	1010 STEEL
6	8	PLATE, .25 THK	1010 STEEL
7	8	PLATE, .25 THK	1010 STEEL
8	8	PLATE, .25 THK	1010 STEEL
9	8	PLATE, .25 THK	1010 STEEL

PARTS LIST			
UNLESS OTHERWISE SPECIFIED: DIMENSIONS ARE IN INCHES -TOLERANCES-		CAD GENERATED DRAWING, DO NOT MANUALLY UPDATE DO NOT SCALE DRAWING	
DECIMALS .XX = +/- .06 .XXX = +/- .030	ANGULAR = +/- .30°	SURFACE FINISH = 250	
FINISH	SIGNATURE	DATE	
	DESIGNED W. K. MILLER	2/8/98	
	DRAWN W. K. MILLER	2/8/98	
	CHECKED HARRY SALAZAR	3-16-98	
	ENGR. T. THOMPSON	3-16-98	
	APPROVED T. THOMPSON	3-16-98	
PART NO. D972393-1	TITLE: HYTEC, INC BSC ROLLER SYSTEM MIDDLE STRUCTURE WELDMENT		SCALE 1/10
	DWG. NO. D972393	SIZE D	SHEET NO. 1 of 1
		REVISION A	