

8 7 6 5 4 3 2 1

REVISIONS			
REV.	DESCRIPTION	DATE	APPROVED

D

D

C

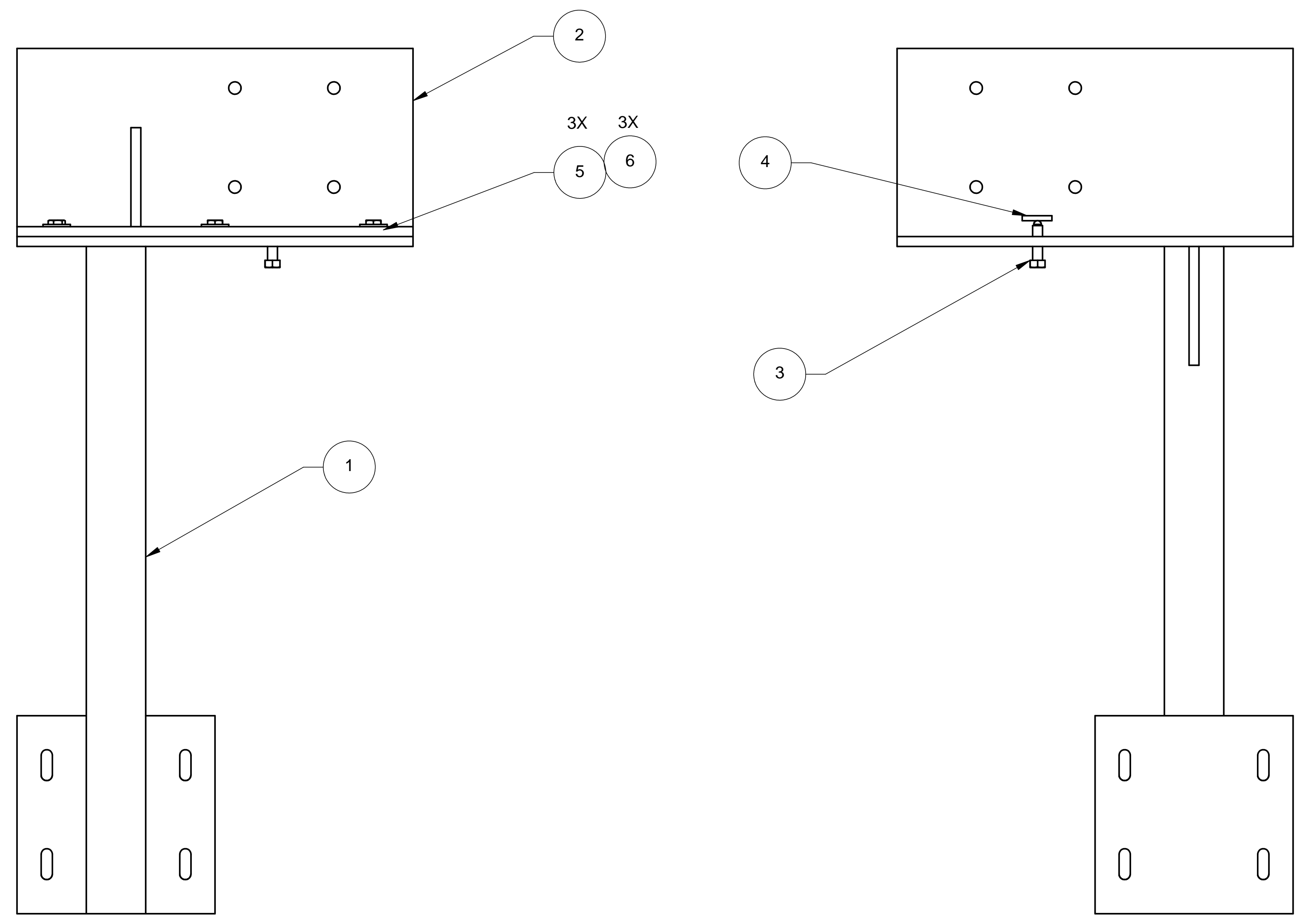
C

B

B

A

A



ITEM NO.	QTY.	PART NO.	DESCRIPTION
1	1	D972433-1	BSC SUPPORT BRACKET, LEFT SIDE
2	1	D972434-1	BSC SUPPORT BRACKET, LEFT SIDE ANGLE PLATE
3	1	D972927-1	HARD SHIM
4	1	D972928-1	BALL SCREW ADJUSTER
5	3	STD HARDWARE	SCREW, HEX HD. .500-13 UNC-2A X 1.00 LG
6	3	STD HARDWARE	WASHER, REGULAR .500 DIA.

PARTS LIST			
UNLESS OTHERWISE SPECIFIED: DIMENSIONS ARE IN INCHES -TOLERANCES-		CAD GENERATED DRAWING, DO NOT MANUALLY UPDATE DO NOT SCALE DRAWING	
DECIMALS .X = +/- .1 .XX = +/- .03 .XXX = +/- .010		ANGULAR = +/- 30' SURFACE FINISH = 250	
FINISH	SIGNATURE	DATE	HYTEC, INC TITLE BSC SUPPORT BRACKET LEFT SIDE SUB-ASSEMBLY DWG. NO. D972388 SIZE D SHEET NO. 1 of 1 SCALE 1/4 REVISION
	DESIGNED W. K. MILLER	2-1-98	
	DRAWN GERALD BUSTOS	2-1-98	
	CHECKED HARRY SALAZAR	----	
	ENGR. T. THOMPSON	----	
PART NO. D972388-1	APPROVED T. THOMPSON	----	

8 7 6 5 4 3 2 1