

8

7

6

5

4

3

2

1

REVISIONS		DATE	APPROVED
REV	DESCRIPTION		

D

D

C

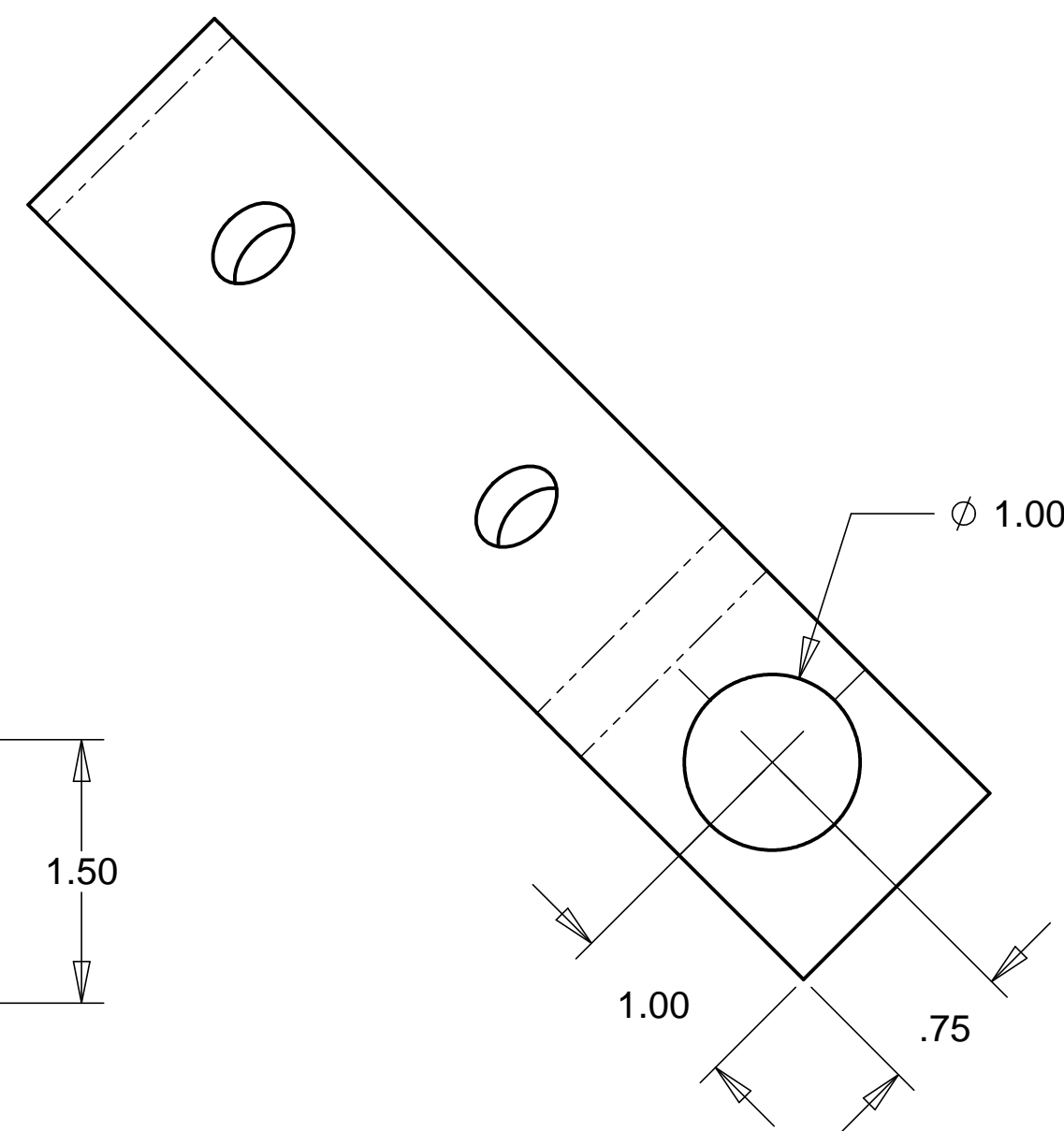
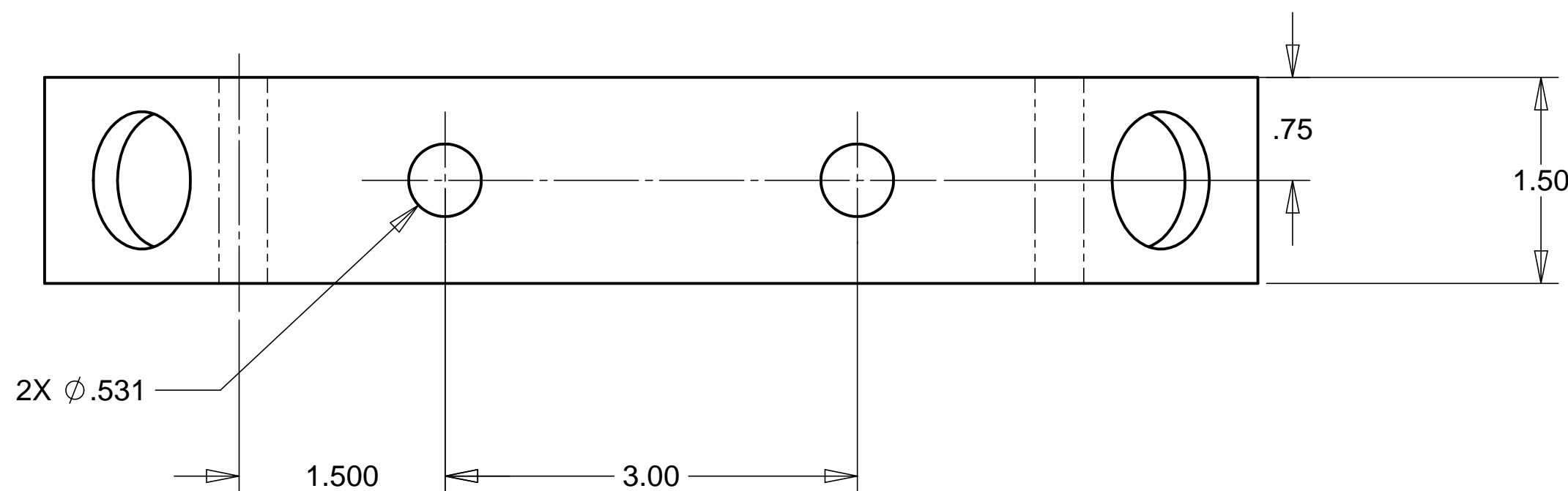
C

B

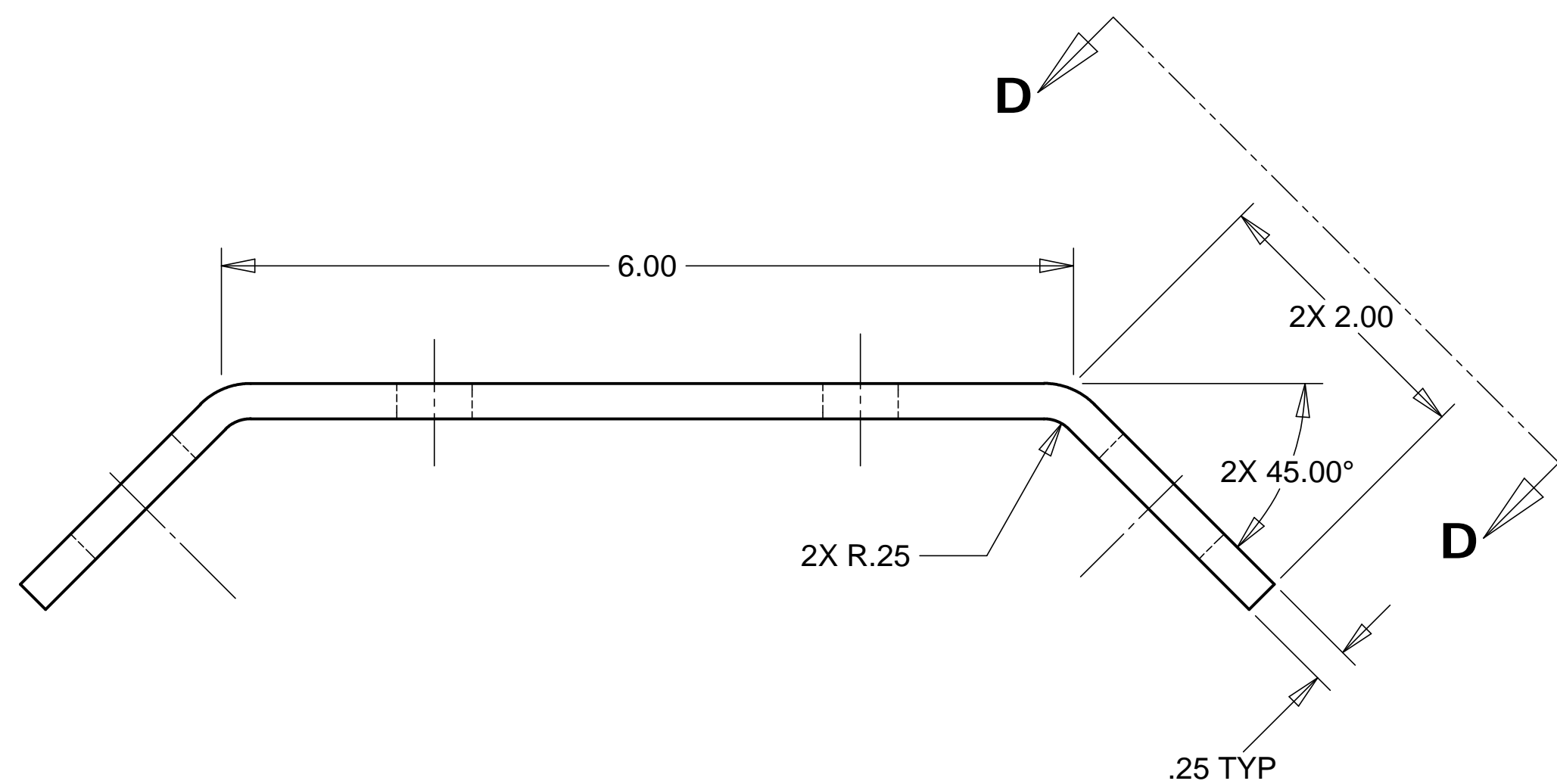
B

A

A



SECTION D-D
SCALE 1:1



MATERIAL: STAINLESS STEEL

NOTES: UNLESS OTHER WISE SPECIFIED

1. ALL DIMENSIONS IN INCHES
2. DIMENSIONS AND TOLERANCING PER ANAS1 Y14.5M-1994
3. SURFACE TEXTURE PER ANI/ASME B 46.1-1985
4. REMOVE ALL BURRS AND BREAK SHARP EDGES TO A MAXIMUM OF .015
5. ALL INSIDE CORNERS TO BE .015 RADIUS MAX
6. COUNTERSINK 82 DEGREES ALL TAPPED HOLES TO MAJOR DIAMETER
7. COUNTERSINK 82 DEGREES APPROXIMATELY .03/.06 DEEP ALL DRILLED HOLES
8. PARTS TO BE THOROUGHLY CLEANED TO REMOVE ALL OIL, GREASE, DIRT AND CHIPS
9. PART NUMBER (DRAWING NO., DASH NO., REVISION NO., SERIAL NO.) TO BE CLEARLY MARKED ON THE PART ITSELF.

ITEM NO.	QTY.	PART NO.	DESCRIPTION		
PARTS LIST					
UNLESS OTHERWISE SPECIFIED: DIMENSIONS ARE IN INCHES -TOLERANCES-			HYTEC, INC TITLE LIGO LIFTING BLOCK DETAIL 2		
DECIMALS ANGULAR = +/- .30' .X = +/- .1 .XX = +/- .03 .XXX = +/- .010 SURFACE FINISH = 250		CAD GENERATED DRAWING, DO NOT MANUALLY UPDATE DO NOT SCALE DRAWING			
FINISH		SIGNATURE		DATE	
DESIGNED		H. SALAZAR		1-10-99	
DRAWN		H. SALAZAR		1-10-99	
CHECKED		E. SWENSEN		04-22-99	
ENGR.		E. SWENSEN		04-22-99	
APPROVED		T. THOMPSON		04-22-99	
PART NO. D972307-1			DWG. NO. D972307		SIZE SHEET NO. D 1 of 1
				SCALE 1/2	REVISION

8

7

6

5

4

3

2

1