

8

7

6

5

4

3

2

1

REVISIONS		DATE	APPROVED
REV	DESCRIPTION		

D

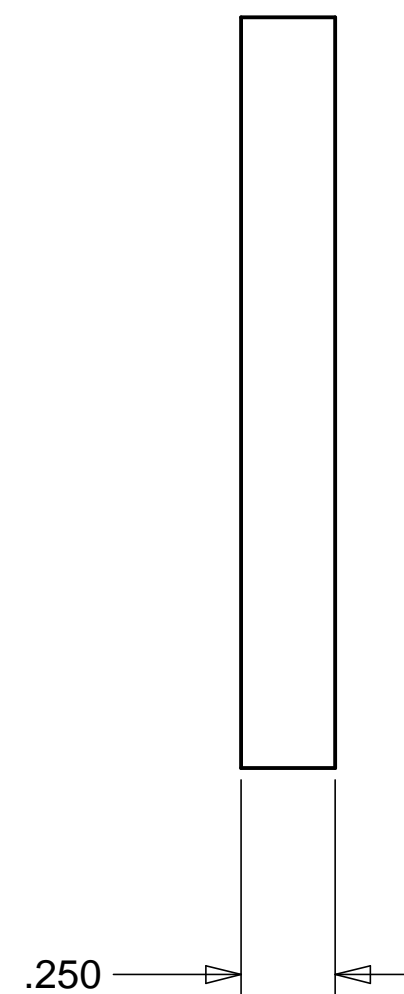
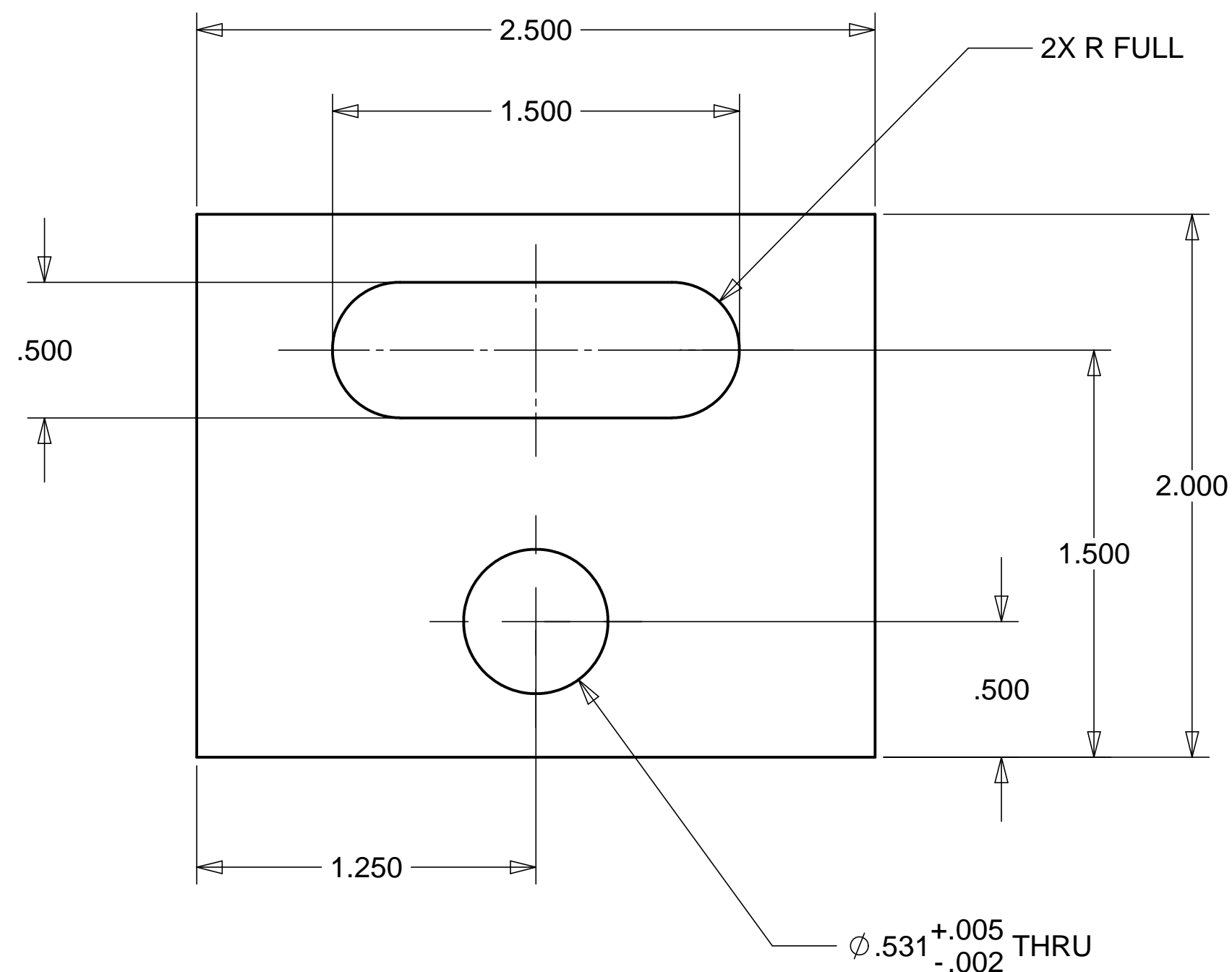
D

C

C

B

B



MATERIAL: ALUM. 6061

NOTES: UNLESS OTHER WISE SPECIFIED

1. ALL DIMENSIONS IN INCHES
2. DIMENSIONS AND TOLERANCING PER ANASI Y14.5M-1994
3. SURFACE TEXTURE PER ANI/ASME B 46.1-1985
4. REMOVE ALL BURRS AND BREAK SHARP EDGES TO A MAXIMUM OF .015
5. ALL INSIDE CORNERS TO BE .015 RADIUS MAX
6. COUNTERSINK 82 DEGREES ALL TAPPED HOLES TO MAJOR DIAMETER
7. COUNTERSINK 82 DEGREES APPROXIMATELY .03/.06 DEEP ALL DRILLED HOLES
8. PARTS TO BE THOROUGHLY CLEANED TO REMOVE ALL OIL, GREASE, DIRT AND CHIPS
9. PART NUMBER (DRAWING NO., DASH NO., REVISION NO., SERIAL NO.) TO BE CLEARLY MARKED ON THE PART ITSELF.

A

A

ITEM NO.	QTY.	PART NO.	DESCRIPTION
PARTS LIST			
UNLESS OTHERWISE SPECIFIED: DIMENSIONS ARE IN INCHES -TOLERANCES-		CAD GENERATED DRAWING, DO NOT MANUALLY UPDATE DO NOT SCALE DRAWING	
DECIMALS ANGULAR = +/- .30'		HYTEC, INC	
.X = +/- .1			
.XX = +/- .03		TITLE LIGO LIFTING BLOCK DETAIL 1	
.XXX = +/- .010 SURFACE FINISH = 250			
FINISH		SIGNATURE	DATE
		DESIGNED H. SALAZAR	1-10-99
		DRAWN H. SALAZAR	1-10-99
PART NO. D972306-1		CHECKED E. SWENSEN	04-22-99
		ENGR. E. SWENSEN	04-22-99
		APPROVED T. THOMPSON	04-22-99
		SCALE 1/2	REVISION
		DWG. NO. D972306	SIZE D SHEET NO. 1 of 1

8

7

6

5

4

3

2

1