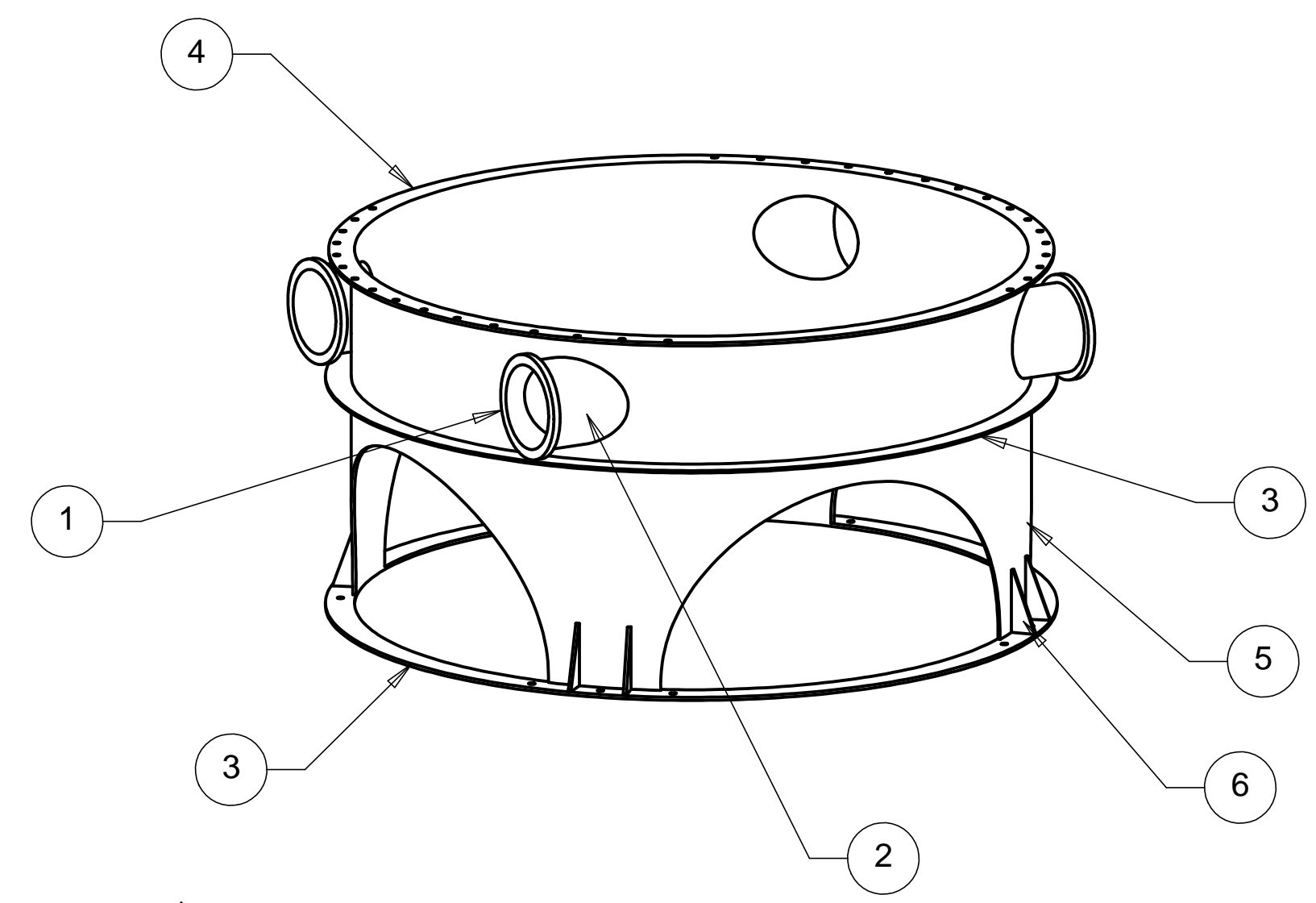
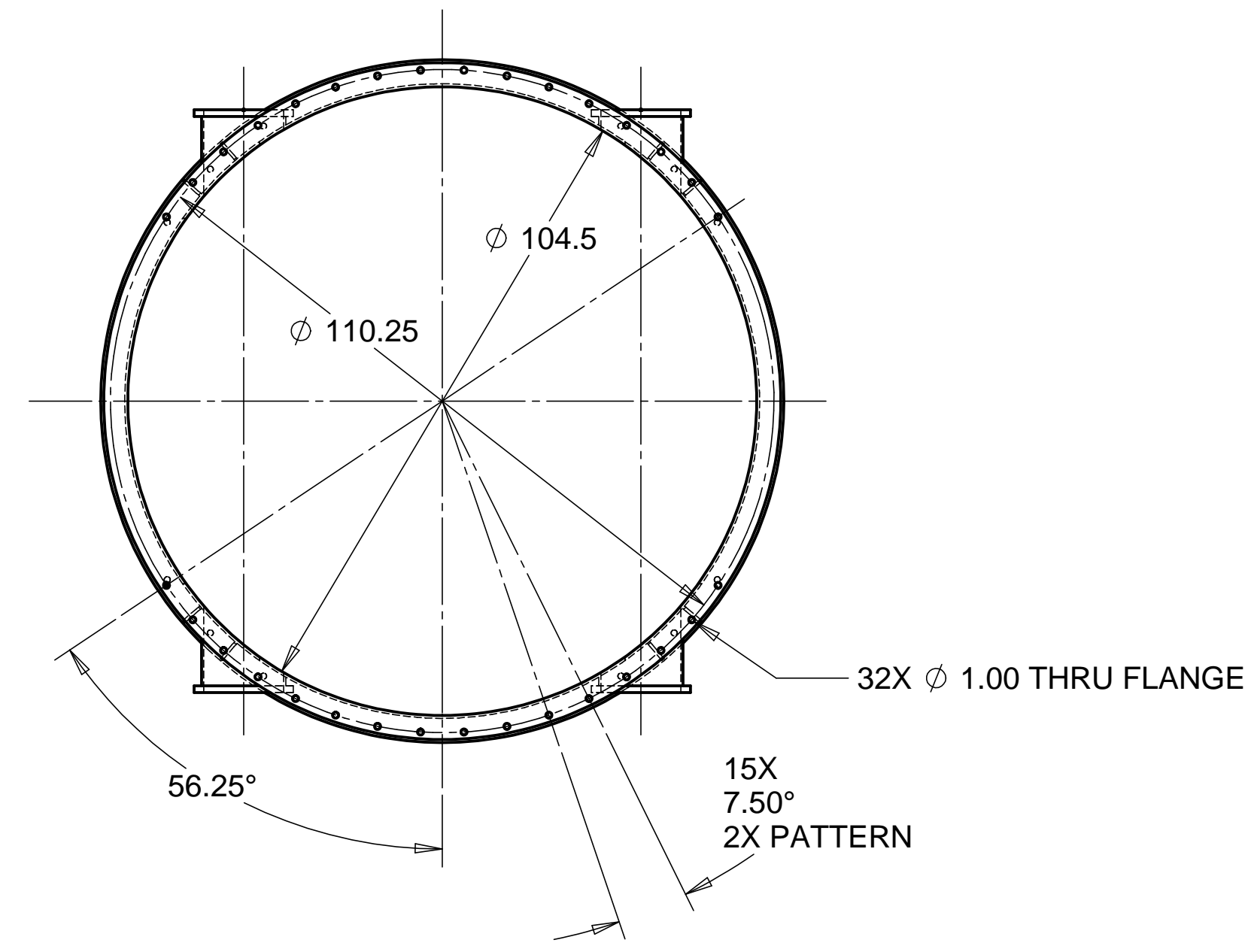


8 7 6 5 4 3 2 1

REVISIONS			
REV.	DESCRIPTION	DATE	APPROVED

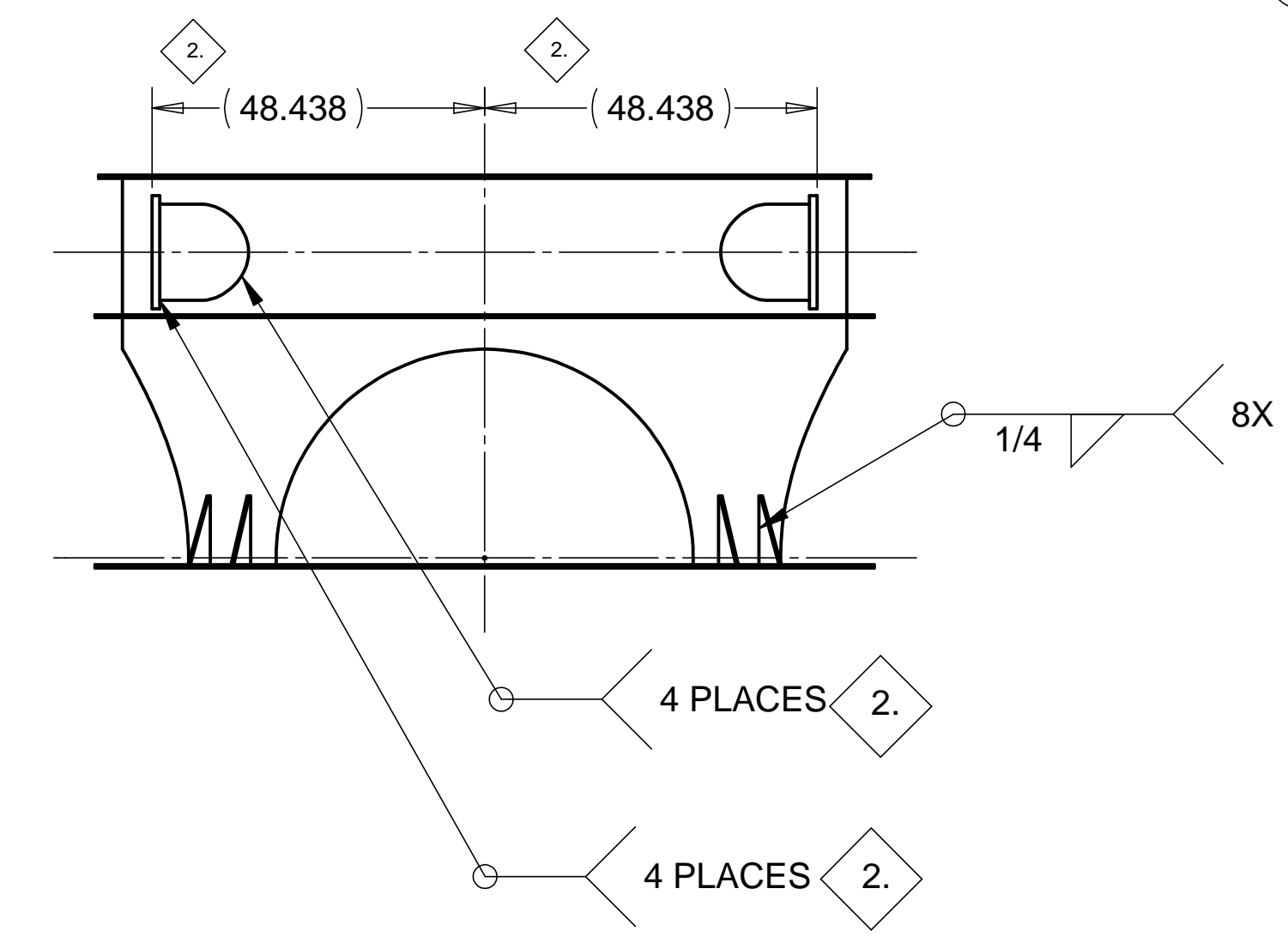
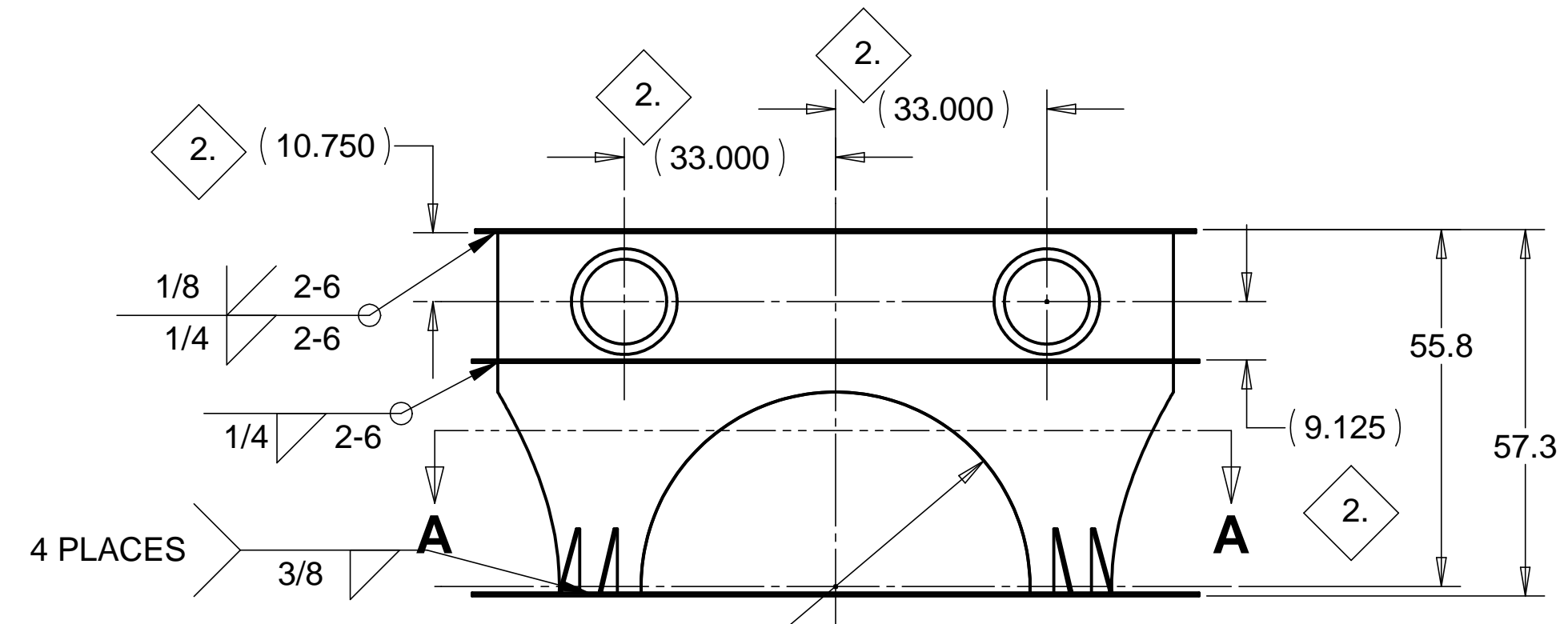
D

D



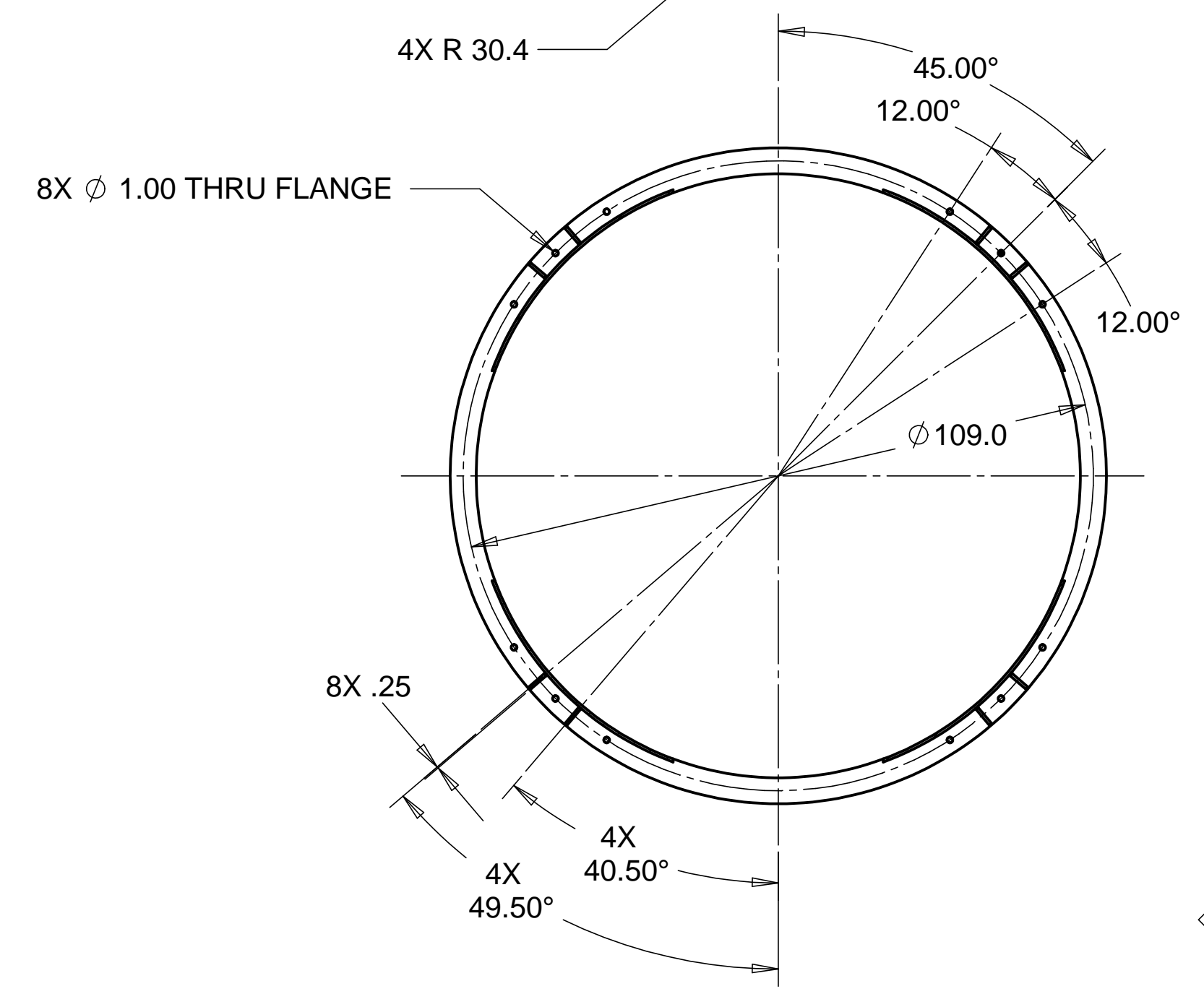
C

C



B

B



- NOTES:
- PAINT EXTERIOR AND INTERIOR OF TANK WITH BLUE #226A. DO NOT PAINT STAINLESS STEEL COMPONENTS.
  - NOZZLE PORTS AND CONFLAT FLANGES TO BE INSTALLED WITH IDENTICAL TOOLING & PRECISION AS PRODUCTION HARDWARE, PSI DRAWING V049-4-101

ITEM NO.	QTY.	DESCRIPTION	MATERIAL
1	4	CONFLAT FLANGE, 16.50 DIAMETER	STAINLESS STEEL
2	4	TUBE, 14.0 OD X .125 WALL	STAINLESS STEEL
3	2	STIFFENER .38 THK X 4.0 WIDE	CARBON STEEL
4	1	TOP FLANGE, 1/2 THK X 4.00 WIDE	CARBON STEEL
5	1	SHELL, 0.5 WALL (ROLLED & WELDED)	CARBON STEEL
6	8	GUSSET, 4 X 10 X .50 THK	CARBON STEEL

PARTS LIST				HYTEC, INC	
UNLESS OTHERWISE SPECIFIED: DIMENSIONS ARE IN INCHES -TOLERANCES-		CAD GENERATED DRAWING, DO NOT MANUALLY UPDATE DO NOT SCALE DRAWING		TITLE <b>LIGO BSC CHAMBER MOCKUP</b>	
DECIMALS X = +/- .1 .XX = +/- .03 .XXX = +/- .010	ANGULAR = +/- .30° SURFACE FINISH = 250	FINISH	SIGNATURE ROGER L. SMITH	DATE 10-8-97	DWG. NO. D972301
PART NO. <b>D972301-1</b>	CHECKED T. THOMPSON	ENGR. T. THOMPSON	APPROVED T. THOMPSON	DATE 10-8-97	SIZE SHEET NO. D 1 of 1
SCALE 1/24				REVISION	

A

A

8 7 6 5 4 3 2 1