

8

7

6

5

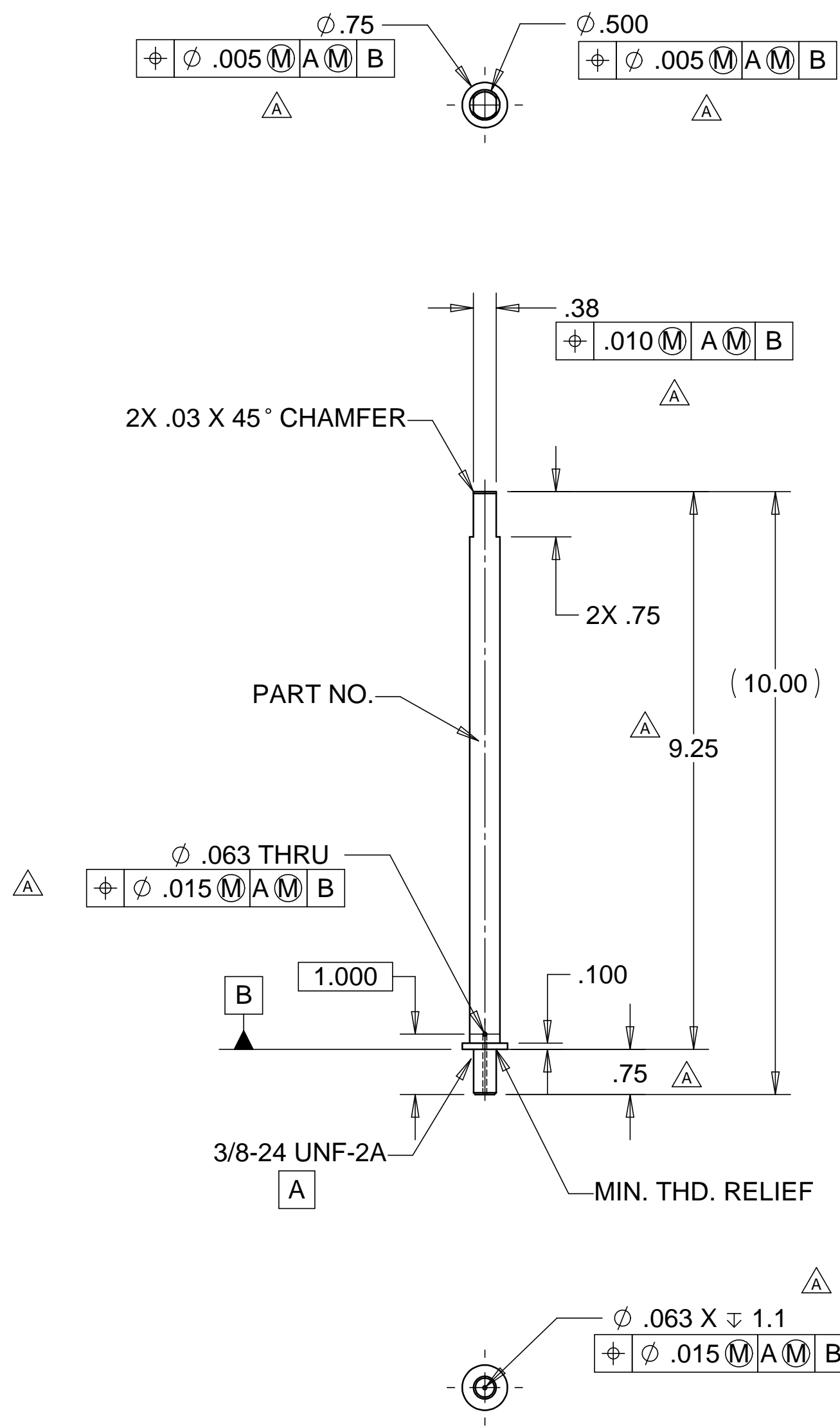
4

3

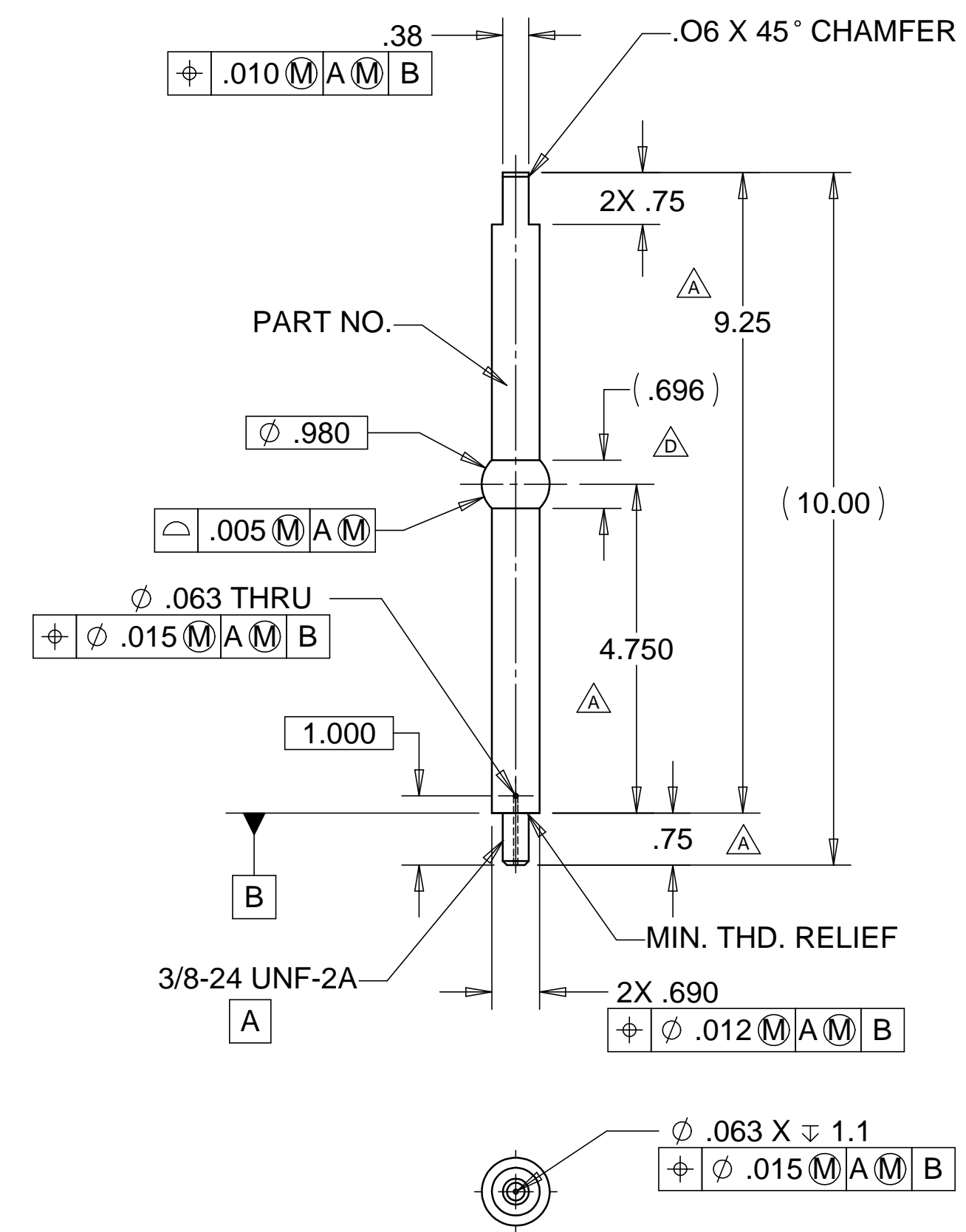
2

1

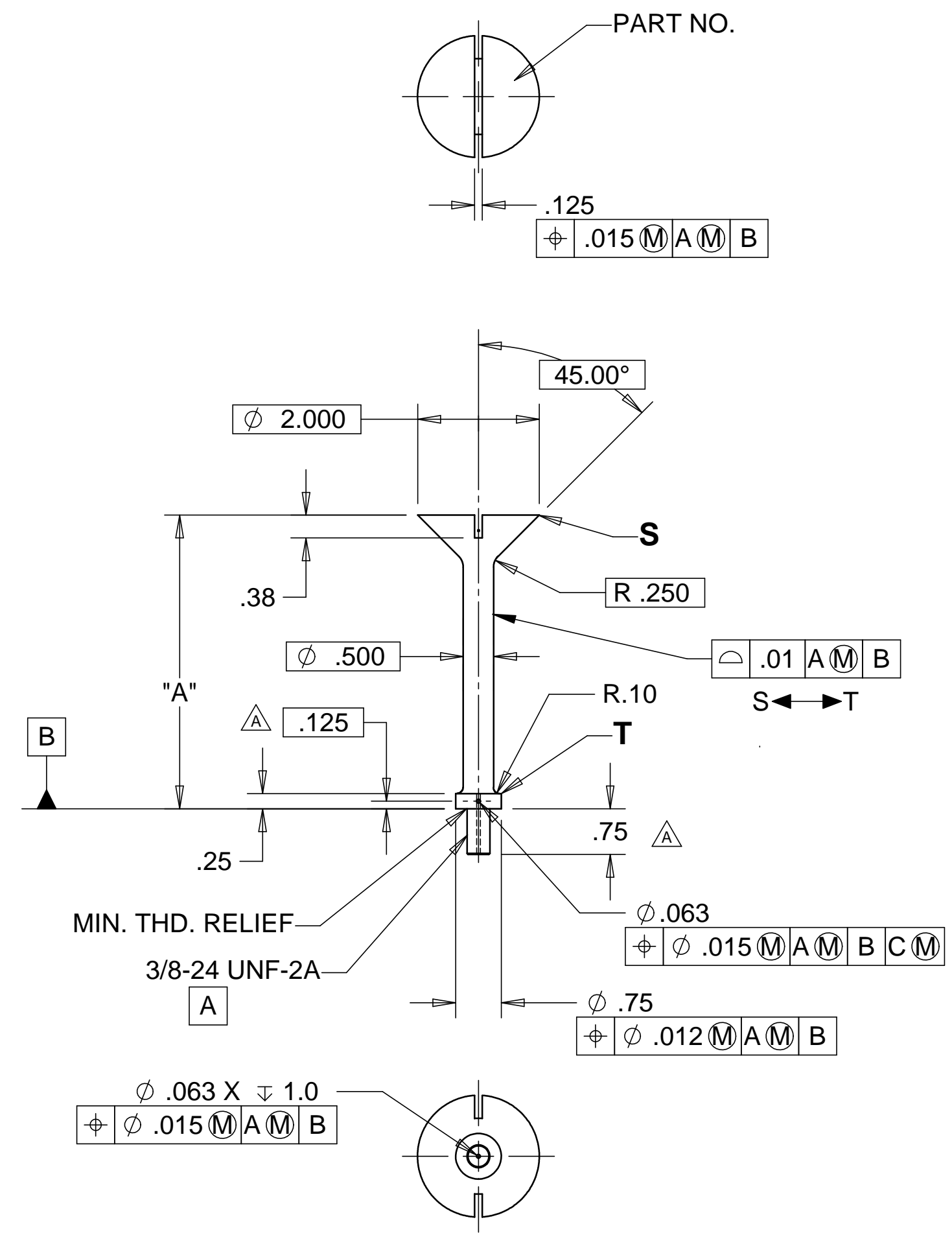
REVISIONS			
REV.	DESCRIPTION	DATE	APPROVED
A	SEE ECN# D972217-A FOR CHANGE LIST	11-03-97	T. THOMPSON
B	SEE ECN# D972217-B FOR CHANGE LIST	02-02-98	T. THOMPSON
C	SEE ECN# D972217-C FOR CHANGE LIST	06-30-98	T. THOMPSON
D	SEE ECN# D972217-D FOR CHANGE LIST	08-17-98	T. THOMPSON



-9 SAFETY PIN  
 P.N.: D972217-9  
 MATL: 304 SST  
 MAGNAPLATE CORP.  
 PVD TITANIUM NITRIDE (TiN) COATING  
 MAGNAGOLD  
 WEIGHT: 0.55 lbs.



-7 LOCATING PIN  
 P.N.: D972217-7  
 MATL: 10% ALUMINUM BRONZE  
 WEIGHT: 1.02 lbs.



PART NO.	DESCRIPTION	"A"	WEIGHT
D972217-1	BSC LEG SCREW 1	7.135	0.68 lbs.
D972217-3	BSC LEG SCREW 2	5.735	0.60 lbs.
D972217-5	BSC LEG SCREW 3	4.828	0.55 lbs.

MATL: 304 SST  
 SILVER COATING

NOTES: UNLESS OTHERWISE SPECIFIED

- ALL DIMENSIONS IN INCHES
- DIMENSIONS AND TOLERANCING PER ASME Y14.5M-1994
- SURFACE TEXTURE PER ANSI/ASME B 46.1-1985
- REMOVE ALL BURRS AND BREAK SHARP EDGES TO A MAXIMUM OF .015
- ALL INSIDE CORNERS TO BE .015 RADIUS MAX
- COUNTERSINK 82 DEGREES ALL TAPPED HOLES TO MAJOR DIAMETER
- COUNTERSINK 82 DEGREES APPROXIMATELY .03/.06 DEEP ALL DRILLED HOLES
- PARTS TO BE THOROUGHLY CLEANED TO REMOVE ALL OIL, GREASE, DIRT AND CHIPS
- PART NUMBER (DRAWING NO., DASH NO., REVISION NO., SERIAL NO.) TO BE CLEARLY MARKED EITHER ON THE PART ITSELF, OR ON A TAG ATTACHED TO THE PART OR PACKAGE
- ALL FABRICATION, CLEANING, AND HANDLING MAINTAINED TO HYTEC SPECIFICATION: LIGO-TS-03 CATEGORY 1.
- NO SULFUR BASED CUTTING FLUIDS ALLOWED. APPROVED STAINLESS STEEL MACHINE LUBRICANT: RELTON A-9, RELTON

PARTS LIST			
UNLESS OTHERWISE SPECIFIED: DIMENSIONS ARE IN INCHES -TOLERANCES-	CAD GENERATED DRAWING, DO NOT MANUALLY UPDATE DO NOT SCALE DRAWING		
	<p>DECIMALS      ANGULAR = +/- .30°          .X = +/- .1          .XX = +/- .03          .XXX = +/- .010      SURFACE FINISH = 250</p>		
FINISH	SIGNATURE	DATE	TITLE
ALL MACHINED SURFACES 64 RMS	ROGER L. SMITH	5-28-97	<b>HYTEC, INC</b>
PART NO. <b>D972217</b>	DRAWN	ROGER L. SMITH	5-28-97
	CHECKED	HARRY SALAZAR	6-6-97
	ENGR.	T. THOMPSON	7-10-97
	APPROVED	T. THOMPSON	7-10-97
DWG. NO. <b>D972217</b>		SCALE 1/2	SIZE SHEET NO. <b>D 1 of 1</b>
REVISION		D	

8

7

6

5

4

3

2

1