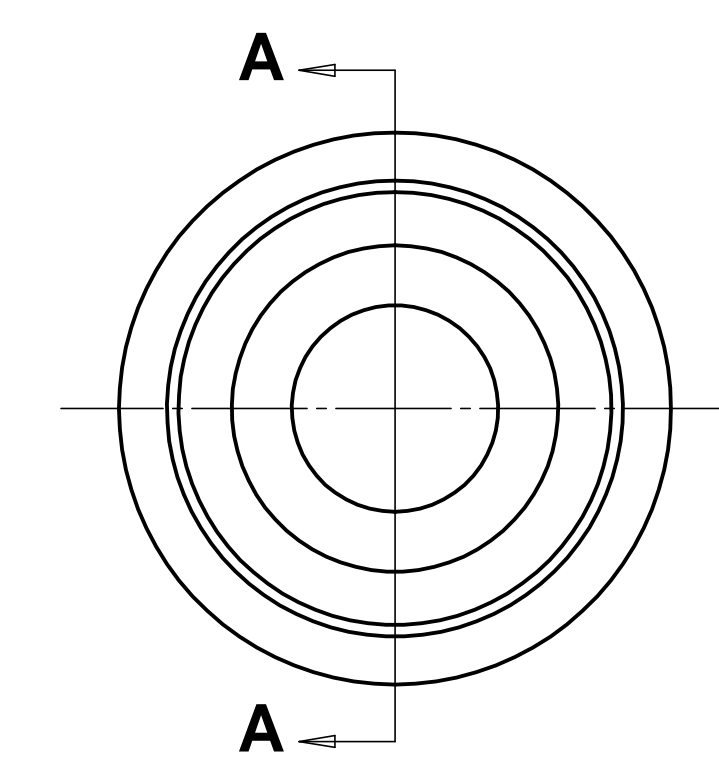
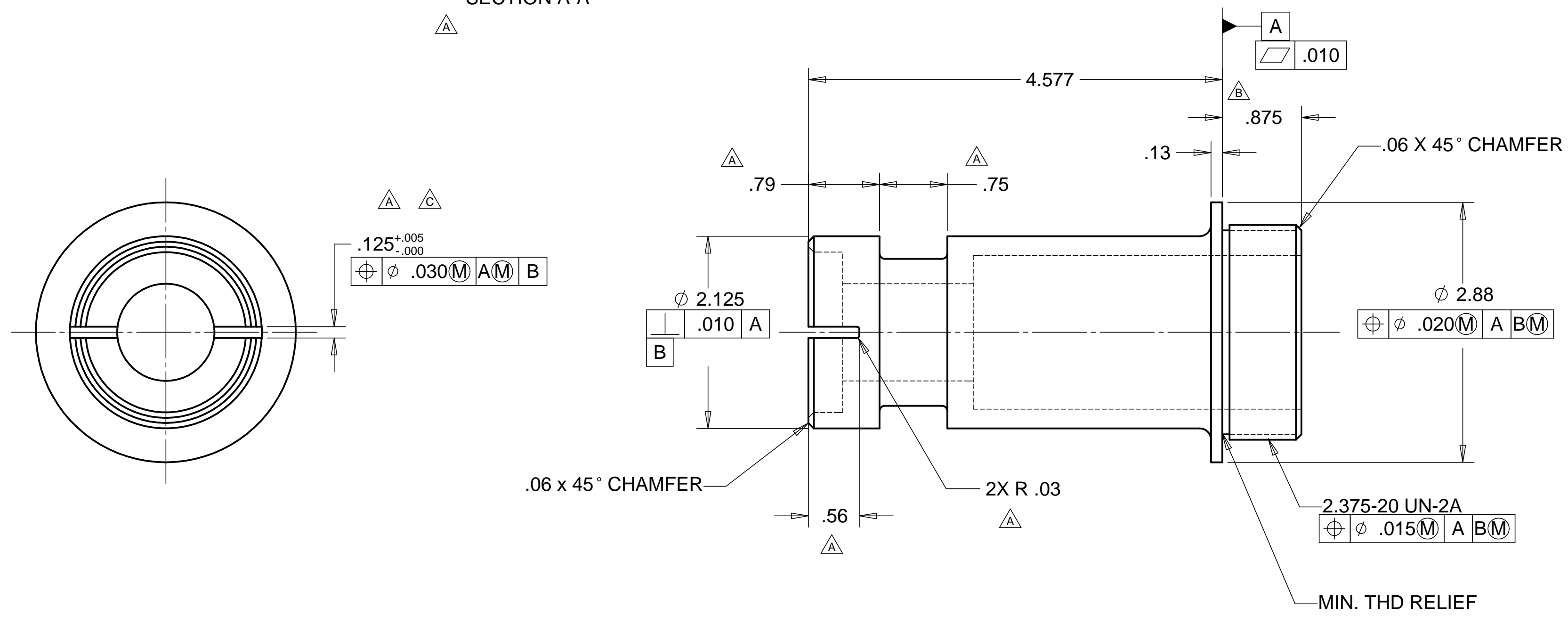
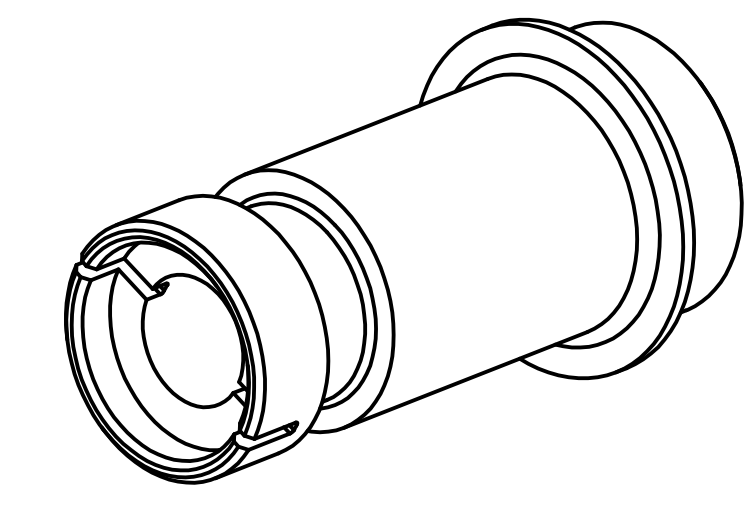
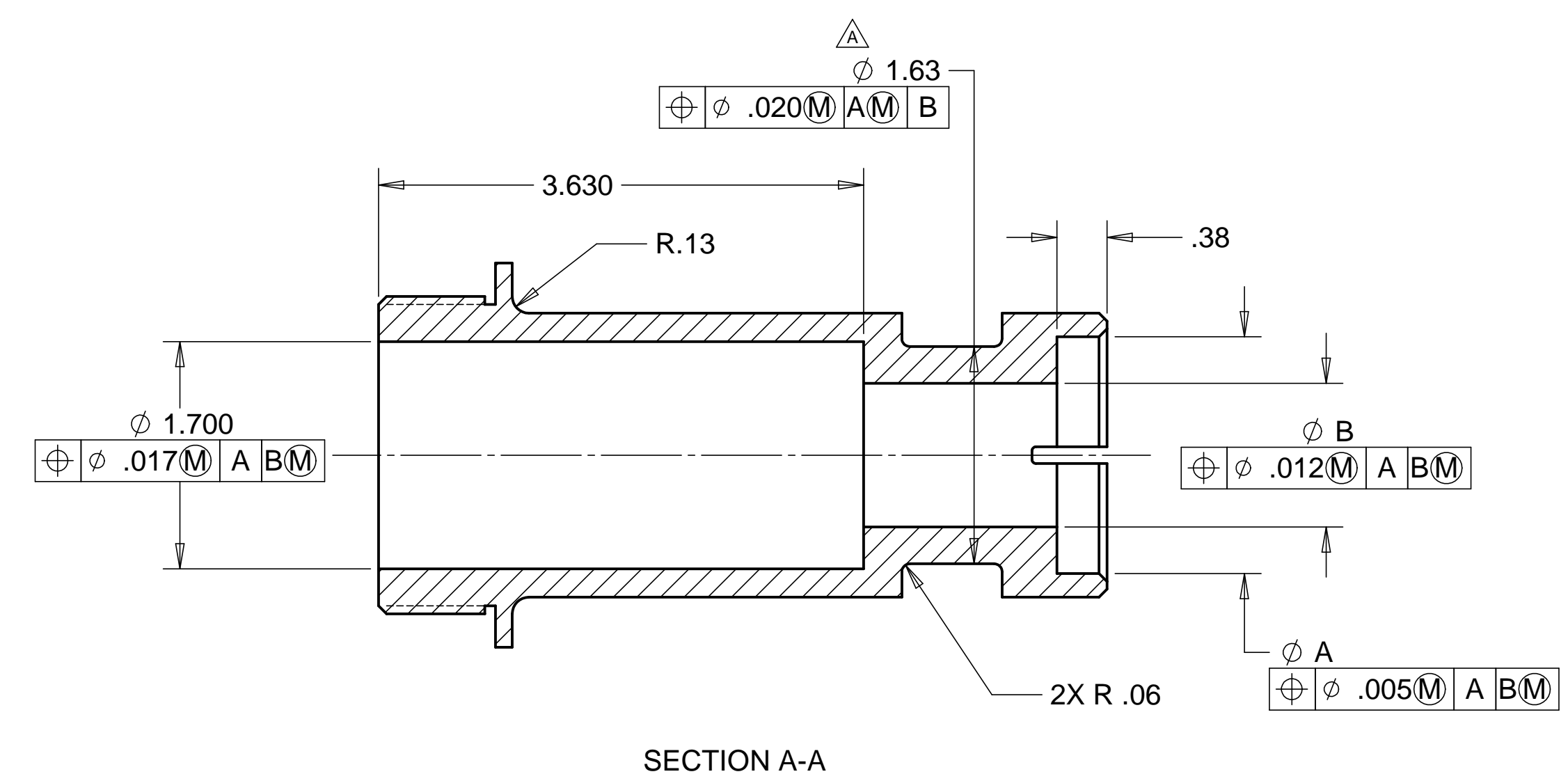


8 7 6 5 4 3 2 1

REVISIONS		DATE	APPROVED
REV	DESCRIPTION		
A	SEE ECN# D972136-A FOR CHANGE LIST	05/14/98	T. THOMPSON
B	SEE ECN# D972136-B FOR CHANGE LIST	08/26/98	T. THOMPSON
C	SEE ECN# D972136-C FOR CHANGE LIST	09/21/98	T. THOMPSON



MATL: 303 STAINLESS

PART NO.	DESCRIPTION	"A"	"B"
D972136-1	BSC - SCISSOR TABLE Z SHAFT MOUNT	1.773	1.075
D972136-3	HAM - SCISSOR TABLE Z SHAFT MOUNT	1.185	0.800

NOTES: UNLESS OTHERWISE SPECIFIED

- ALL DIMENSIONS IN INCHES
- DIMENSIONS AND TOLERANCING PER ASME Y14.5M-1994
- SURFACE TEXTURE PER ANSI/ASME B 46.1-1985
- REMOVE ALL BURRS AND BREAK SHARP EDGES TO A MAXIMUM OF .015
- ALL INSIDE CORNERS TO BE .015 RADIUS MAX
- COUNTERSINK 82 DEGREES ALL TAPPED HOLES TO MAJOR DIAMETER
- COUNTERSINK 82 DEGREES APPROXIMATELY .03/.06 DEEP ALL DRILLED HOLES
- PARTS TO BE THOROUGHLY CLEANED TO REMOVE ALL OIL, GREASE, DIRT AND CHIPS
- PART NUMBER (DRAWING NO. PLUS DASH NO. PLUS SERIAL NO.) TO BE CLEARLY MARKED ON THE PART.

PARTS LIST			
UNLESS OTHERWISE SPECIFIED: DIMENSIONS ARE IN INCHES -TOLERANCES-		CAD GENERATED DRAWING, DO NOT MANUALLY UPDATE DO NOT SCALE DRAWING	
DECIMALS .XX = +/- .03 .XXX = +/- .010	ANGULAR = +/- .30° SURFACE FINISH = 250	<p>HYTEC, INC</p> <p>TITLE LIGO SCISSOR TABLE Z SHAFT MOUNT</p>	
FINISH	DESIGNED ROGER L. SMITH	SIGNATURE ROGER L. SMITH	DATE 5-28-97
PART NO. D972136-1	DRAWN ROGER L. SMITH	CHECKED HARRY SALAZAR	DATE 5-28-97
	ENGR. T. THOMPSON	APPROVED T. THOMPSON	DATE 8-6-97
	DWG. NO. D972136		SCALE 1/1
SIZE D		SHEET NO. 1 of 1	
REVISION C			

8 7 6 5 4 3 2 1