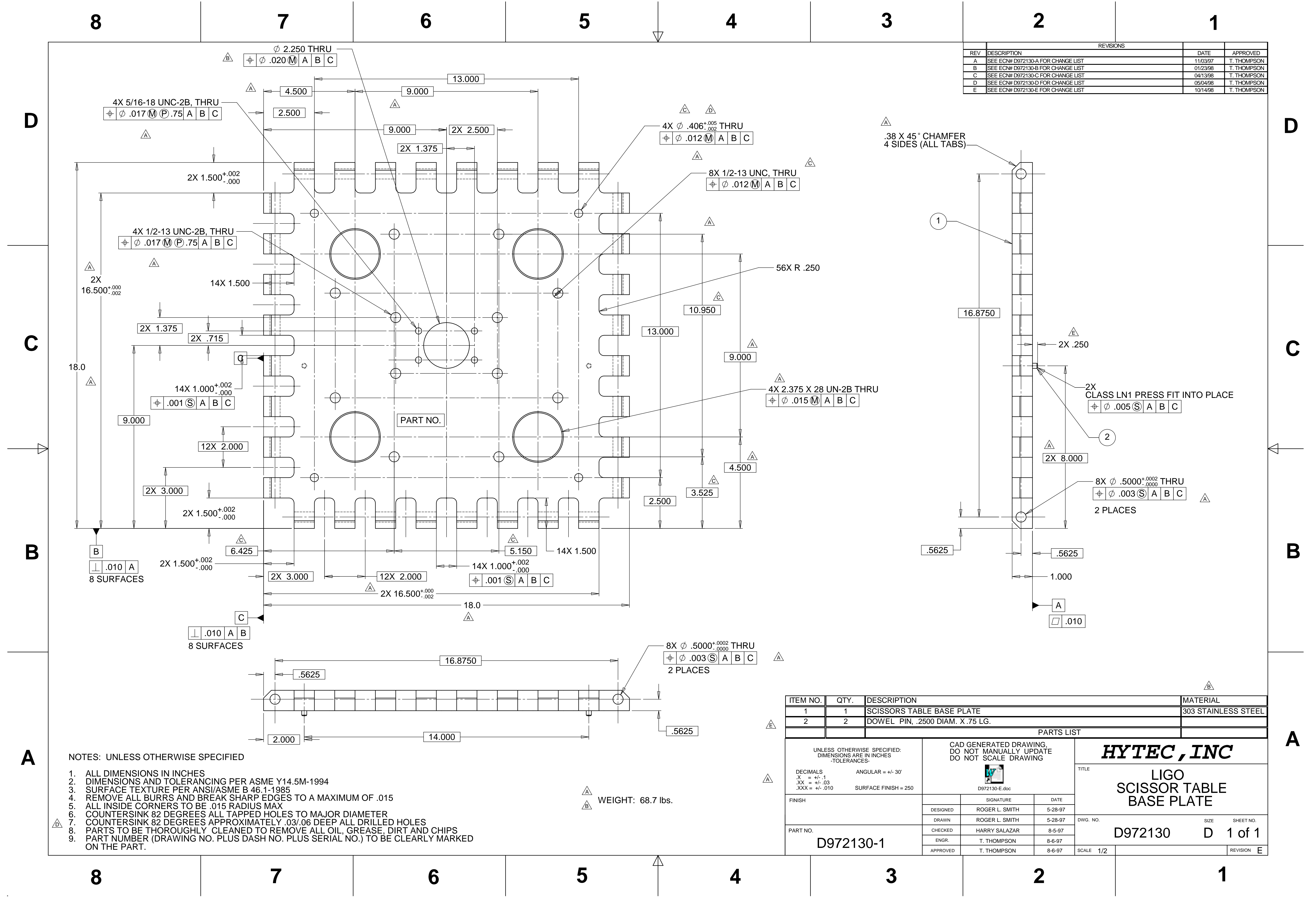


REVISIONS			
REV	DESCRIPTION	DATE	APPROVED
A	SEE ECN# D972130-A FOR CHANGE LIST	11/03/97	T. THOMPSON
B	SEE ECN# D972130-B FOR CHANGE LIST	01/23/98	T. THOMPSON
C	SEE ECN# D972130-C FOR CHANGE LIST	04/13/98	T. THOMPSON
D	SEE ECN# D972130-D FOR CHANGE LIST	05/04/98	T. THOMPSON
E	SEE ECN# D972130-E FOR CHANGE LIST	10/14/98	T. THOMPSON




NOTES: UNLESS OTHERWISE SPECIFIED

- ALL DIMENSIONS IN INCHES
- DIMENSIONS AND TOLERANCING PER ASME Y14.5M-1994
- SURFACE TEXTURE PER ANSI/ASME B 46.1-1985
- REMOVE ALL BURRS AND BREAK SHARP EDGES TO A MAXIMUM OF .015
- ALL INSIDE CORNERS TO BE .015 RADIUS MAX
- COUNTERSINK 82 DEGREES ALL TAPPED HOLES TO MAJOR DIAMETER
- COUNTERSINK 82 DEGREES APPROXIMATELY .03/.06 DEEP ALL DRILLED HOLES
- PARTS TO BE THOROUGHLY CLEANED TO REMOVE ALL OIL, GREASE, DIRT AND CHIPS
- PART NUMBER (DRAWING NO. PLUS DASH NO. PLUS SERIAL NO.) TO BE CLEARLY MARKED ON THE PART.

WEIGHT: 68.7 lbs.

ITEM NO.	QTY.	DESCRIPTION	MATERIAL
1	1	SCISSORS TABLE BASE PLATE	303 STAINLESS STEEL
2	2	DOWEL PIN, .2500 DIAM. X.75 LG.	

PARTS LIST

UNLESS OTHERWISE SPECIFIED: DIMENSIONS ARE IN INCHES -TOLERANCES-		CAD GENERATED DRAWING, DO NOT MANUALLY UPDATE DO NOT SCALE DRAWING		HYTEC, INC		
DECIMALS	ANGULAR = +/- .30'			TITLE		
.X = +/- .1		D972130-E.doc		LIGO SCISSOR TABLE BASE PLATE		
.XX = +/- .03	SURFACE FINISH = 250	SIGNATURE	DATE	DWG. NO.	SIZE SHEET NO.	
.XXX = +/- .010		DESIGNED	ROGER L. SMITH	5-28-97	D972130 D 1 of 1	
FINISH		DRAWN	ROGER L. SMITH	5-28-97		
PART NO.		CHECKED	HARRY SALAZAR	8-5-97		
D972130-1		ENGR.	T. THOMPSON	8-6-97		
		APPROVED	T. THOMPSON	8-6-97	SCALE 1/2	REVISION E