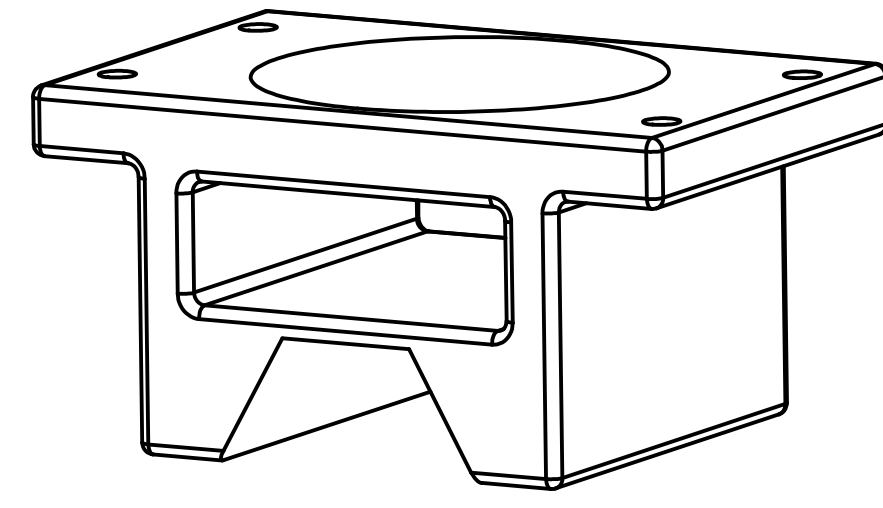
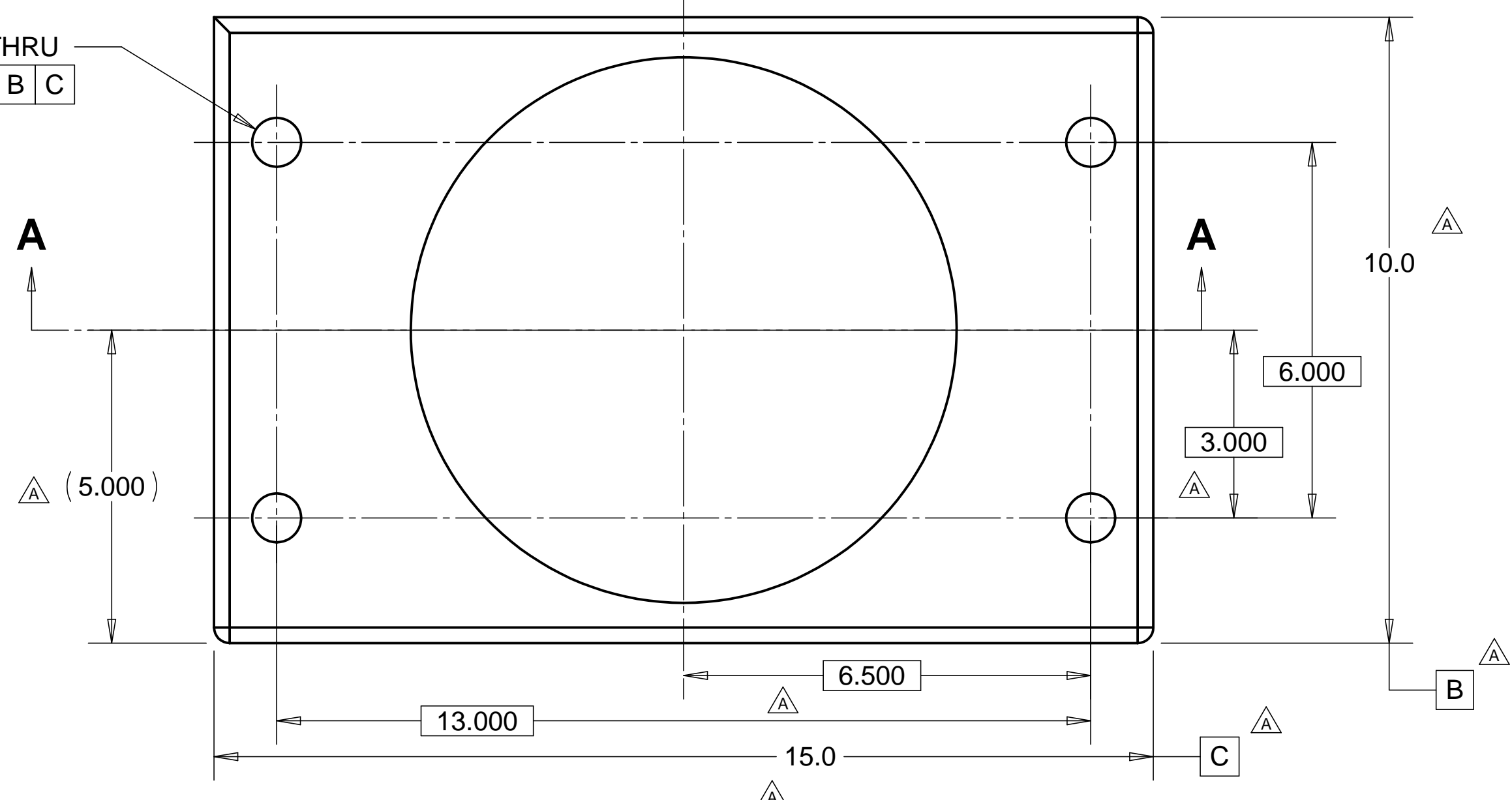


8 7 6 5 4 3 2 1

| REVISIONS | | | |
|-----------|------------------------------------|----------|-------------|
| REV. | DESCRIPTION | DATE | APPROVED |
| A | SEE ECN# D972125-A FOR CHANGE LIST | 11-03-97 | T. THOMPSON |
| B | SEE ECN# D972125-B FOR CHANGE LIST | 12-01-97 | T. THOMPSON |

4X $\phi .781^{+.005}_{-.002}$ THRU
 $\phi .011$ A B C



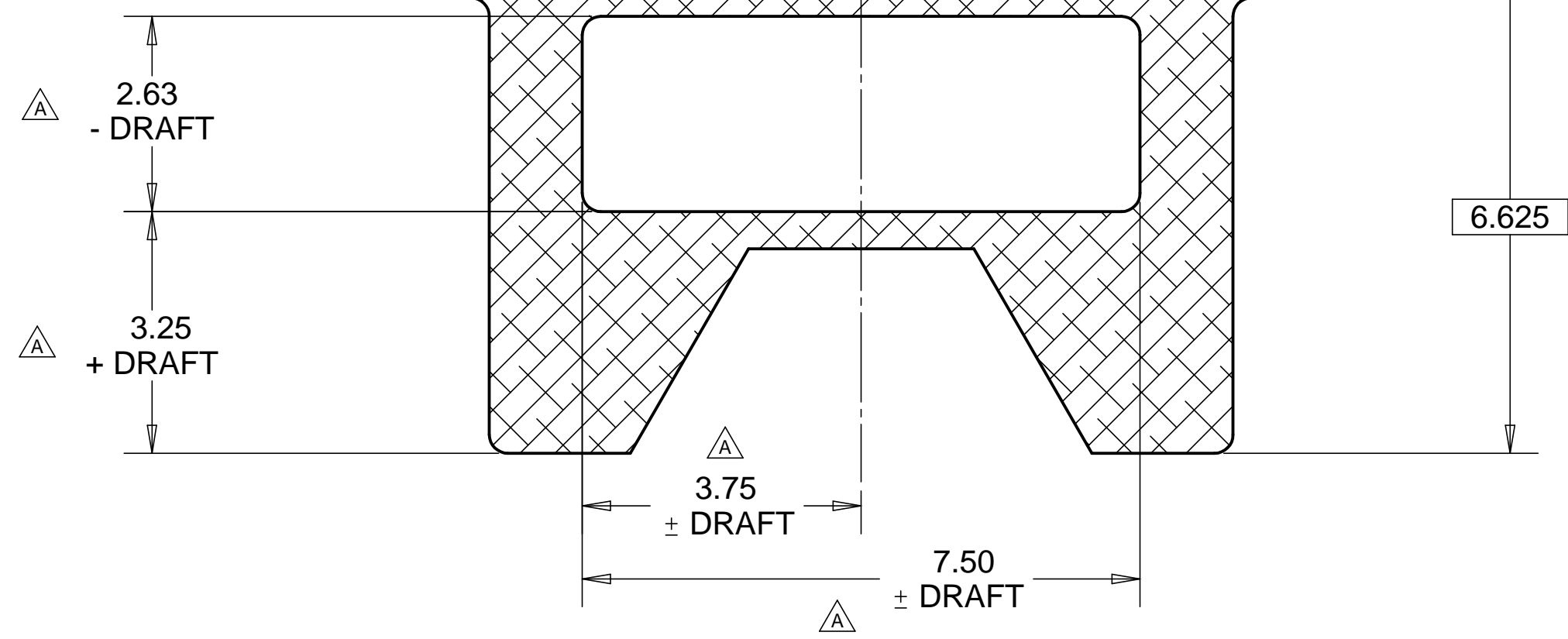
SR 10.000
 $\text{R} .005$ A B C

(7.500)

ADD .13 FOR MACHINING

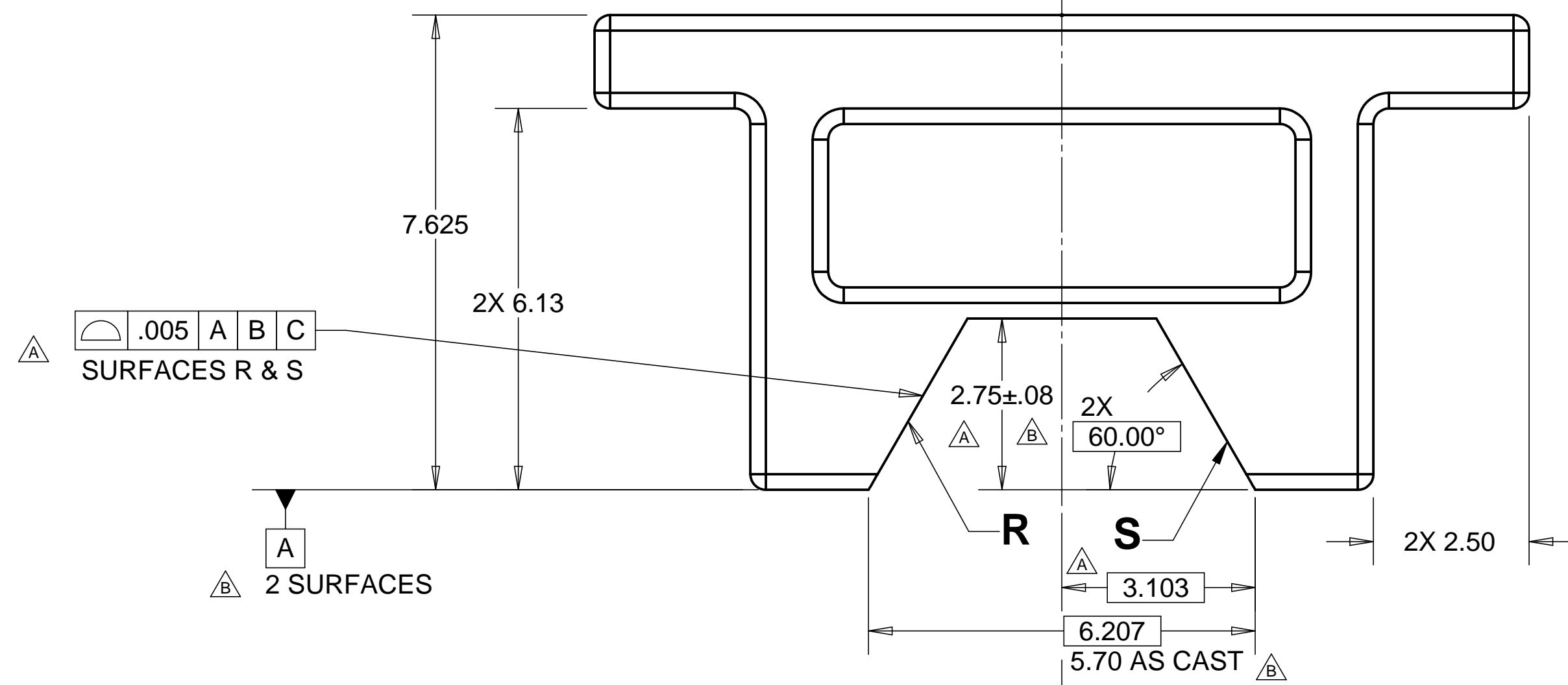
32

R .3 MAX
 TYP FOR ALL NON
 MACHINED EDGES



SECTION A-A

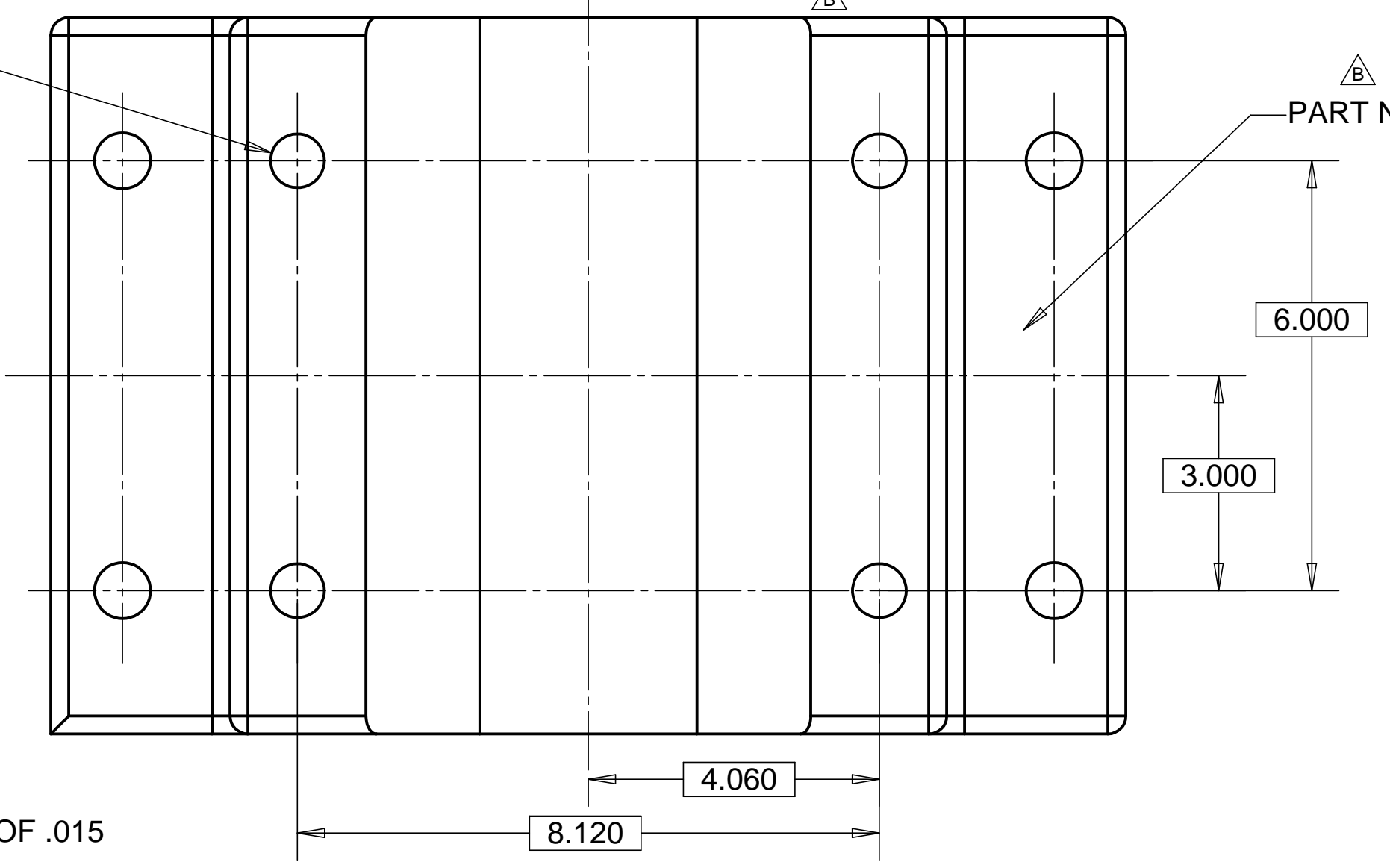
MATL: ALUM. A356-T6
 WEIGHT: 46.0 lbs.



$\text{R} .005$ A B C
 SURFACES R & S

A
 2 SURFACES

4X 3/4-16 UNF-2B X 1.5
 HELICOIL INSERT OR EQUIV.
 $\phi .017$ 2.75 A B C



PART NO.

6.000

3.000

4.060

8.120

11. DIMENSIONS FROM MAX. DRAFT MATERIAL.

NOTES: UNLESS OTHERWISE SPECIFIED

- ALL DIMENSIONS IN INCHES
- DIMENSIONS AND TOLERANCING PER ASME Y14.5M-1994
- SURFACE TEXTURE PER ANSI/ASME B 46.1-1985
- REMOVE ALL BURRS AND BREAK SHARP EDGES TO A MAXIMUM OF .015
- ALL INSIDE CORNERS TO BE .015 RADIUS MAX
- COUNTERSINK 82 DEGREES ALL TAPPED HOLES TO MAJOR DIAMETER
- COUNTERSINK 82 DEGREES APPROXIMATELY .015 DEEP ALL DRILLED HOLES
- PARTS TO BE THOROUGHLY CLEANED TO REMOVE ALL OIL, GREASE, DIRT AND CHIPS
- PART NUMBER (DRAWING NO. PLUS DASH NO. PLUS SERIAL NO.) TO BE CLEARLY MARKED ON THE PART ITSELF.
- ALLOWABLE DRAFT ANGLE 2° MAX.

| PARTS LIST | | | |
|---|--|--|---------------|
| UNLESS OTHERWISE SPECIFIED: DIMENSIONS ARE IN INCHES -TOLERANCES- | | CAD GENERATED DRAWING, DO NOT MANUALLY UPDATE DO NOT SCALE DRAWING | |
| DECIMALS X = +/- .1 .XX = +/- .03 .XXX = +/- .010 | ANGULAR = +/- .30° SURFACE FINISH = 250 | SIGNATURE | DATE |
| FINISH | | DESIGNED ROGER L. SMITH | 5-28-97 |
| | | DRAWN ROGER L. SMITH | 5-28-97 |
| | | CHECKED HARRY SALAZAR | 7-10-97 |
| | | ENGR. T. THOMPSON | 7-10-97 |
| | | APPROVED T. THOMPSON | 7-10-97 |
| PART NO. D972125-1 | | TITLE HYTEC, INC LIGO BSC SUPPORT TUBE MNT BASE | |
| | | DWG. NO. D972125 | SIZE D |
| | | SHEET NO. 1 of 1 | REVISION B |
| | | SCALE 1/2 | |

8 7 6 5 4 3 2 1