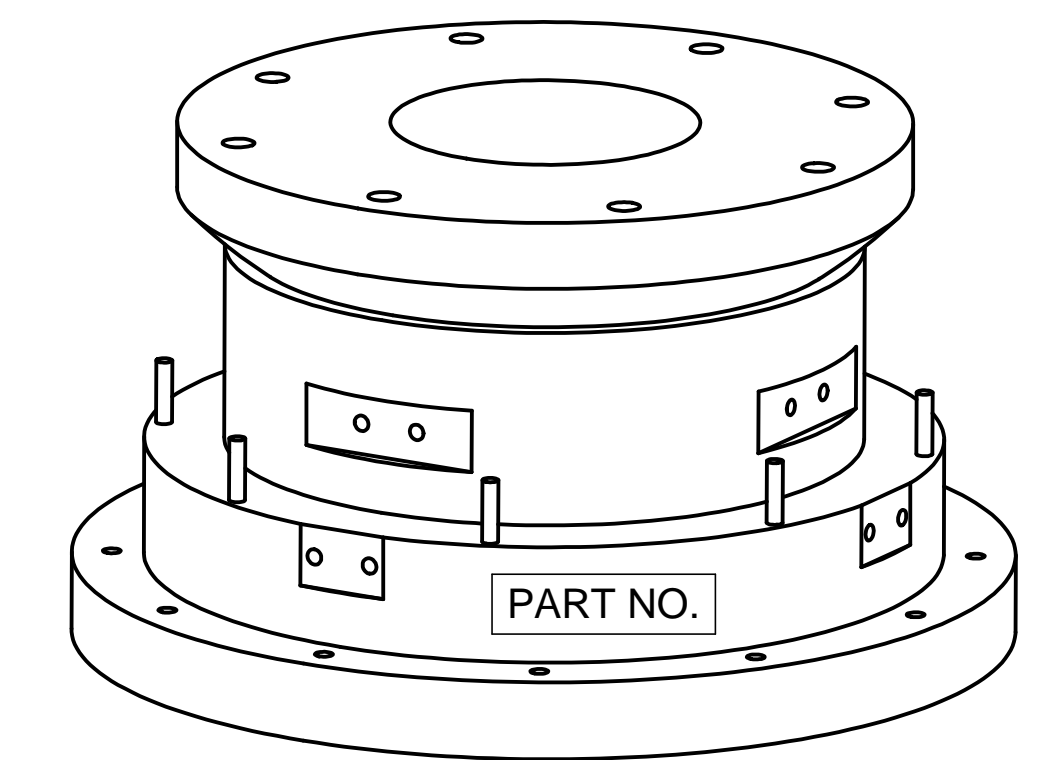
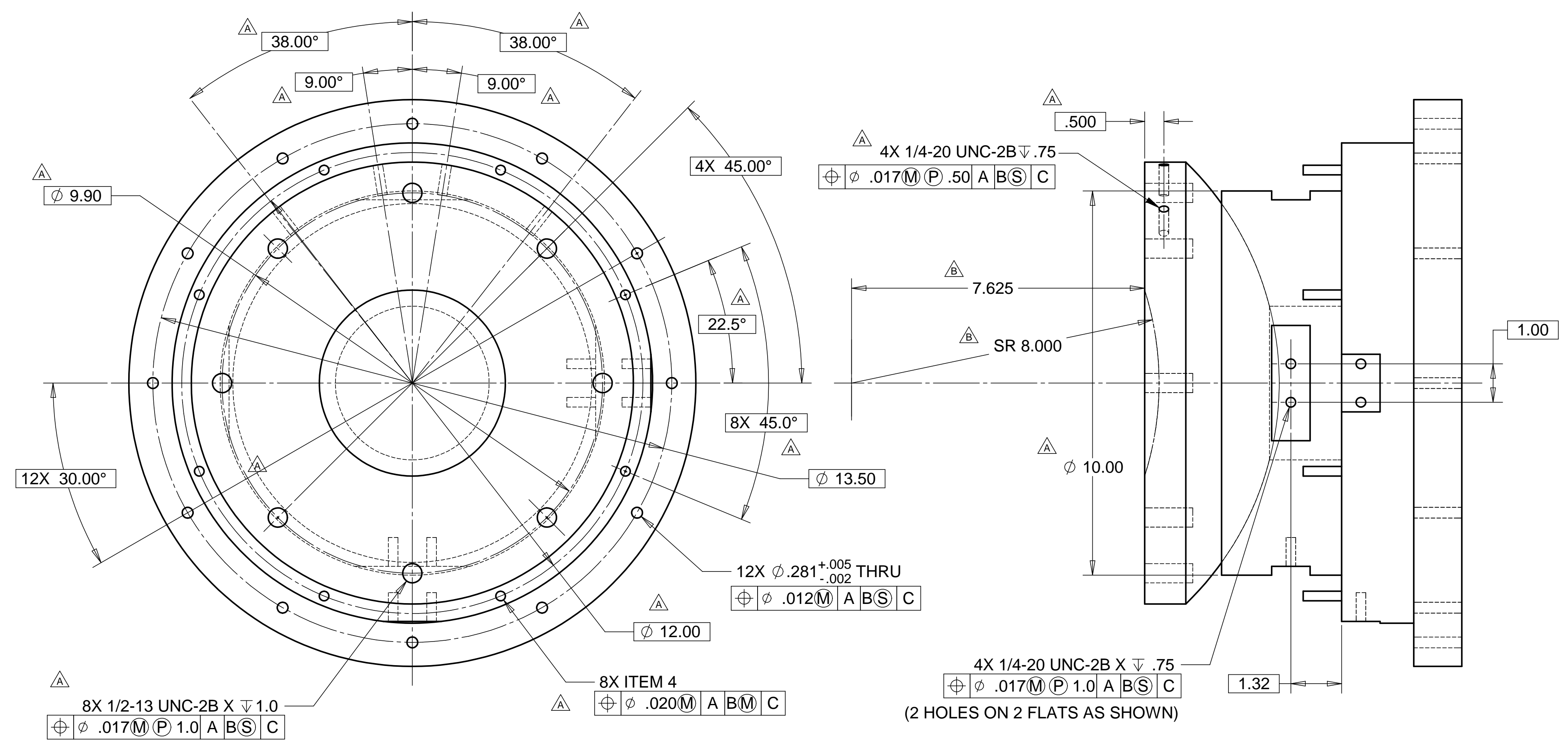


8 7 6 5 4 3 2 1

REVISIONS			
REV	DESCRIPTION	DATE	APPROVED
A	SEE ECN# D972106-A FOR CHANGE LIST	11/03/97	T. THOMPSON
B	SEE ECN# D972106-B FOR CHANGE LIST	11/13/97	T. THOMPSON
C	SEE ECN# D972106-C FOR CHANGE LIST	07/01/98	T. THOMPSON
D	SEE ECN# D972106-D FOR CHANGE LIST	09/21/98	T. THOMPSON

D

D

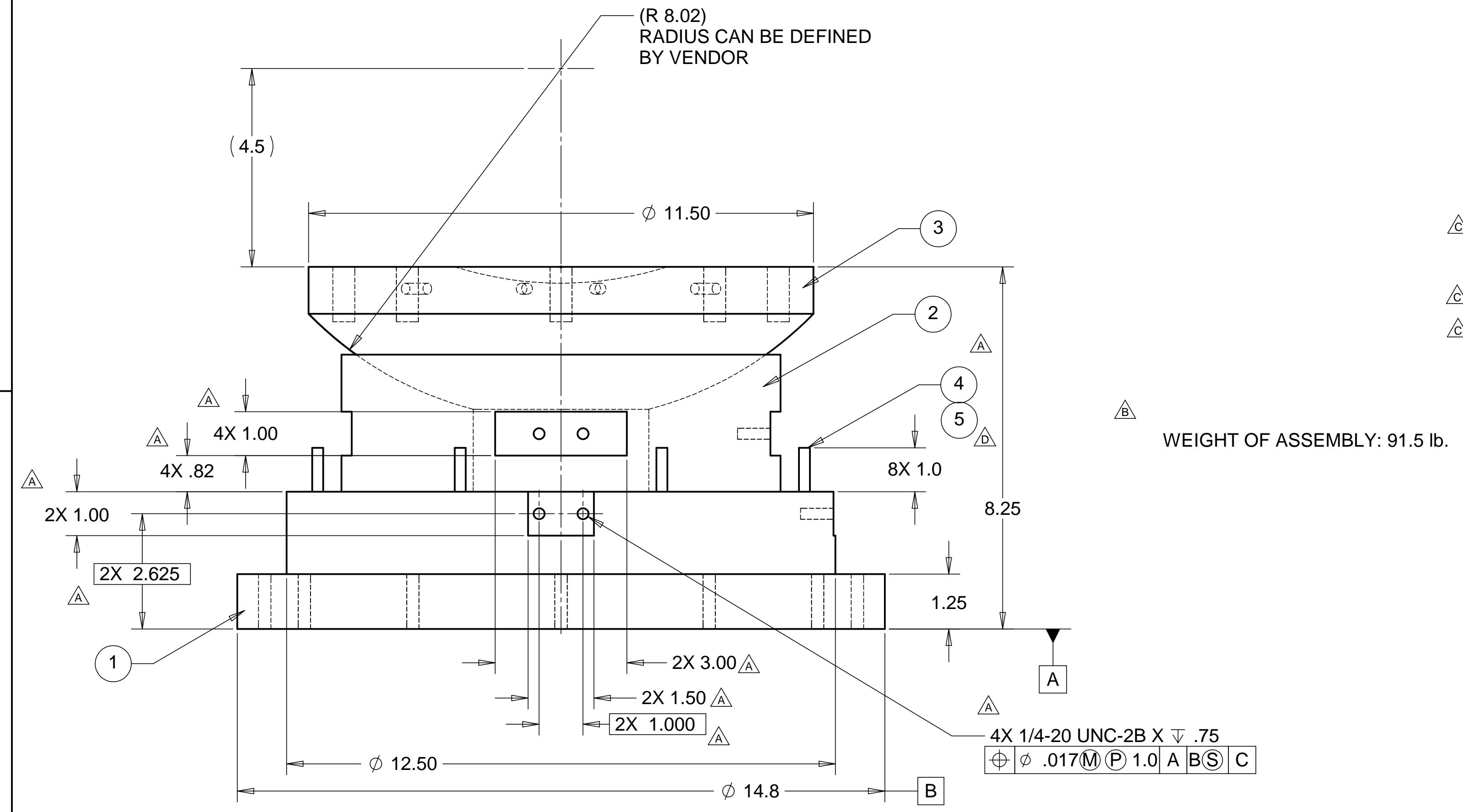


C

C

B

B



NOTES: UNLESS OTHERWISE SPECIFIED

1. ALL DIMENSIONS IN INCHES
2. DIMENSIONS AND TOLERANCING PER ANASI Y14.5M-1994
3. SURFACE TEXTURE PER ANI/ASME B 46.1-1985
4. REMOVE ALL BURRS AND BREAK SHARP EDGES TO A MAXIMUM OF .015
5. ALL INSIDE CORNERS TO BE .03/.06 RADIUS MAX
6. COUNTERSINK 82 DEGREES ALL TAPPED HOLES TO MAJOR DIAMETER
7. COUNTERSINK 82 DEGREES APPROXIMATELY .015 DEEP ALL DRILLED HOLES
8. PARTS TO BE THOROUGHLY CLEANED TO REMOVE ALL OIL, GREASE, DIRT AND CHIPS
9. PART NUMBER (DRAWING NO., DASH NO., REVISION NO., SERIAL NO.) TO BE CLEARLY MARKED ON THE PART ITSELF.
10. PART TO BE FABRICATED PER HYTEC SPECIFICATION: LIGO-TS-AB

A

A

ITEM NO.	QTY.	PART NO.	DESCRIPTION
1	1		AIRBEARING BASE SURFACE
2	1		AIRBEARING MID SURFACES
3	1		AIRBEARING SPHERICAL SURFACE
4	8		DOWEL PIN, 1/4 X 2.0 LG.
5	8		SILICONE TUBING BUMPERS, 1/4 I.D. X 3/8 O.D.

PARTS LIST				HYTEC, INC	
UNLESS OTHERWISE SPECIFIED: DIMENSIONS ARE IN INCHES -TOLERANCES-		CAD GENERATED DRAWING, DO NOT MANUALLY UPDATE DO NOT SCALE DRAWING		TITLE	
DECIMALS X = +/- .1 XX = +/- .03 XXX = +/- .010		ANGULAR = +/- .30' SURFACE FINISH = 250		LIGO AIR-BEARING ASSEMBLY	
FINISH ALL MACHINED SURFACES 64 RMS		SIGNATURE		DWG. NO.	
PART NO. D972106-1		DESIGNED ROGER L. SMITH 8/22/97		D972106	
		DRAWN ED PIOTROWICZ / R. SMITH 8/25/97		SIZE D	
		CHECKED HARRY SALAZAR 8/25/97		SHEET NO. 1 of 1	
		ENGR. T. THOMPSON 8/25/97		REVISION D	
		APPROVED T. THOMPSON 8/25/97		SCALE 1/2	

8 7 6 5 4 3 2 1