

8

7

6

5

4

3

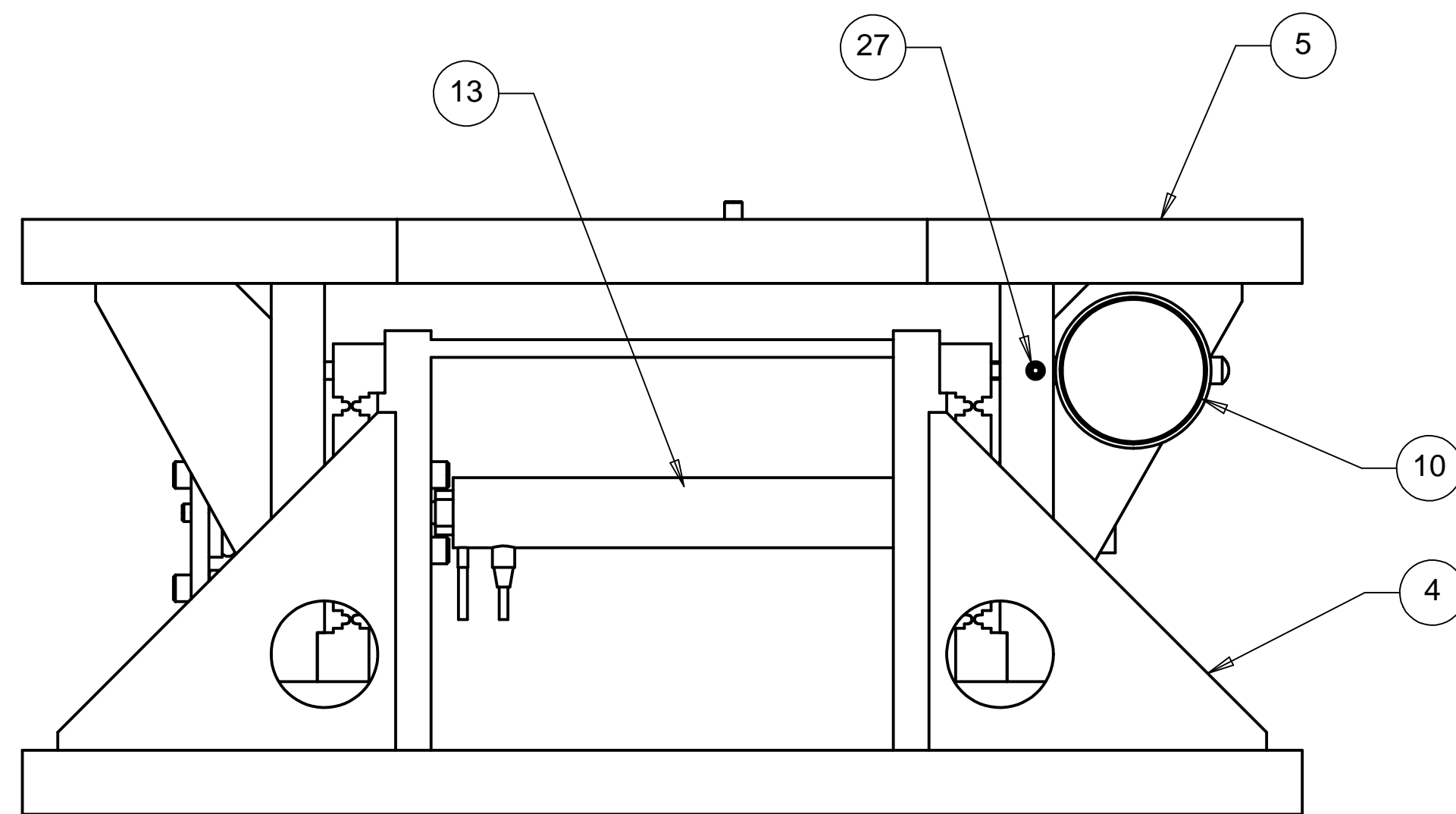
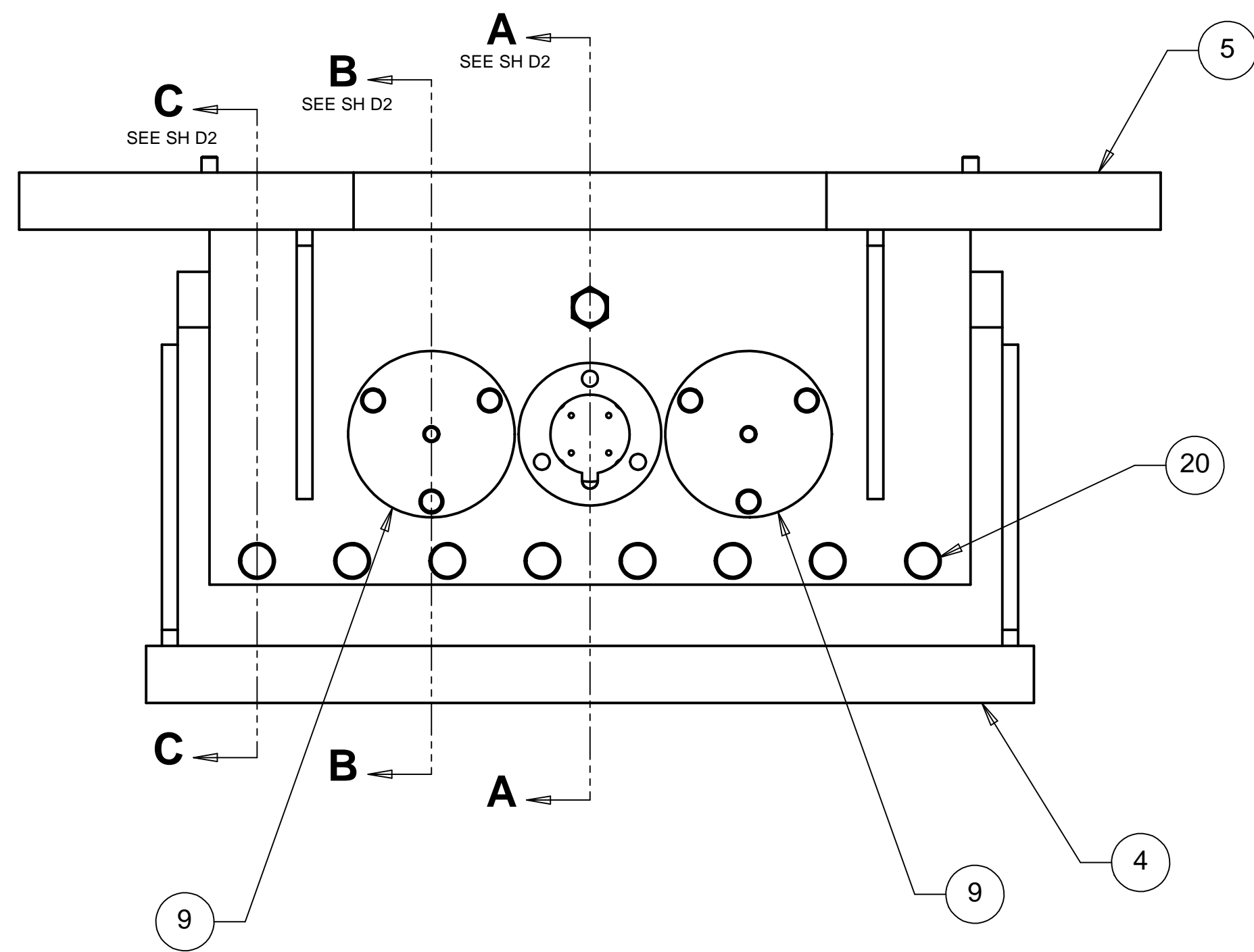
2

1

REVISIONS			
REV	DESCRIPTION	DATE	APPROVED
A	SEE ECN# D972101-A FOR CHANGE LIST	03/16/99	T. THOMPSON
B	SEE ECN# D972101-B FOR CHANGE LIST	05/21/99	T. THOMPSON
C	SEE ECN# D972101-C FOR CHANGE LIST	10/19/99	T. THOMPSON

D

D

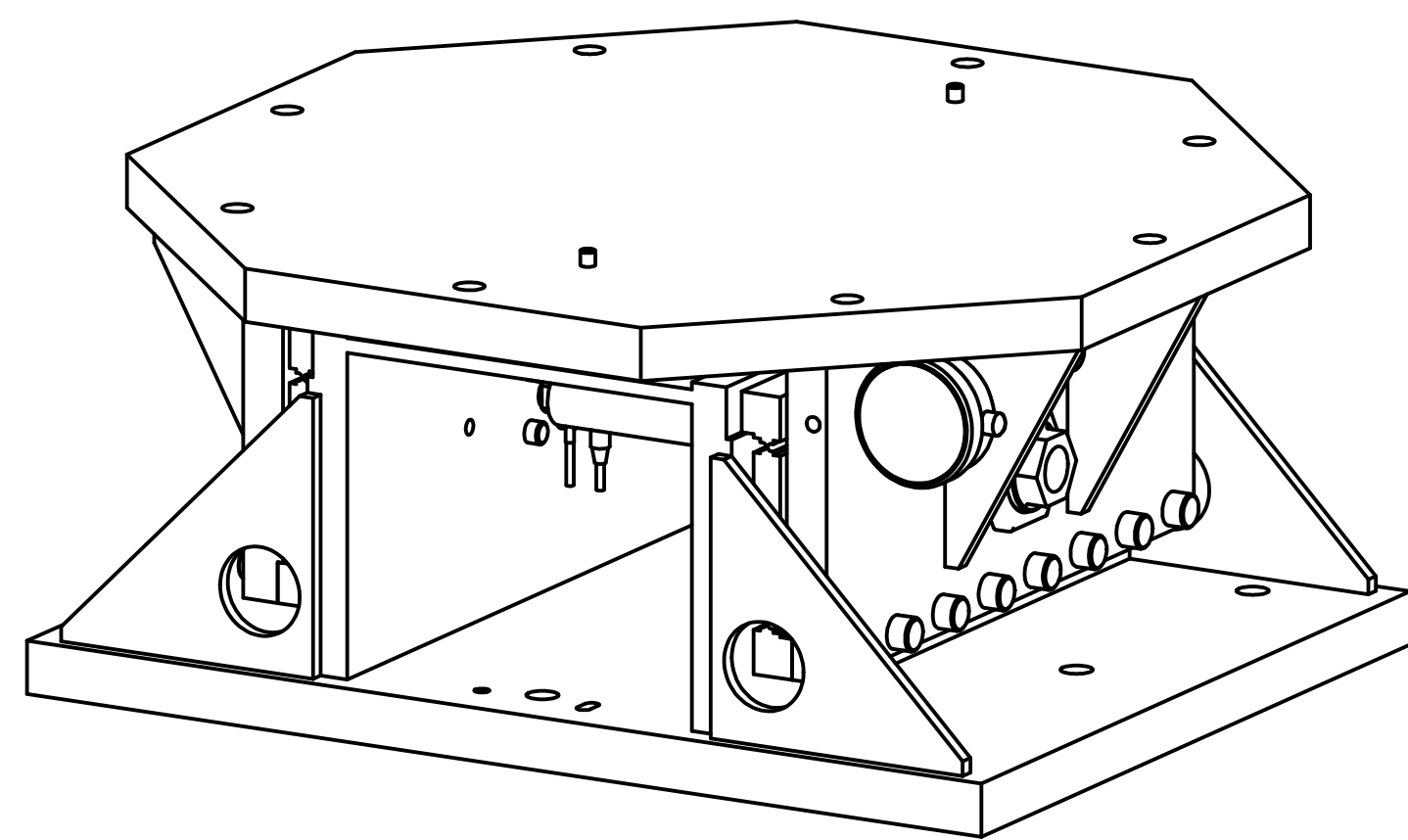


C

C

B

B



WEIGHT: 218.3 lbs.

A

A

ITEM NO.	QTY.	PART NO.	DESCRIPTION
1	1	D972155-1	BEARING HOUSING LOCK NUT
2	1	D972109-1	5/16 BALL SEAT, 6 mm
3	1	D972109-3	5/16 BALL SEAT, 8 mm
4	1	D972110-1	BOTTOM FRAME
5	1	D972111.1	TOP FRAME
6	1	D972112-1	FLEXURE-B, (SPRING LOADED SIDE)
7	1	D972113-1	FLEXURE-A, (LOAD ADJUSTING SIDE)
8	4	D972114-1	SPRING SEAT
9	2	D972115-1	SPRING PRELOAD PLATE
10	1	MSC # 06450118	DIAL INDICATOR, TECLOCK 1 mm X .001 mm OR EQUIV.
11	1	D972117-1	FRAME MOUNT BALL SEAT
12	1	D972154-1	BEARING CONICAL SEAT
13	1	P-239.97 - P 177.10	PIEZOTRANSLATOR, PHYSIK INSTRUMENTE (PI) GmbH & CO.
14	6	14230-H-SS-.875-1(B=1/4-20 X 3/4)	TREADED STANDOFF, ASM CO.
15	2	C1225-207-2500M	SPRING, ASSOC. SPRINGS
16	2		TOOLING BALL, 5/16 DIAM. ALUMINA Gr25, SALEM SP. BALL CO.
17	8		SOC. HD SCREW, .25-28 UNF-2A X .75 LG., SST
18	2	D972156-1	FLEXURE MOUNT STOP SCREW
19	16		SOC. HD SCREW, .38-24 UNF-2A X 1.00 LG., SST
20	16		SOC. HD SCREW, .38-24 UNF-2A X 1.25 LG., SST
21	2		HEX NUT, .38-24 UNF-2B, SST
22	6		SOC. HD SCREW, .25-20 UNF-2A X .88 LG., SST
23	1	51100	BEARING, NSK OR EQUIV.
24	1		# 10 NYLON WASHER
25	1		SOC HD SCREW, # 10-32 UNF-2A X .375 LG, SST
26	1	D972153-1	BEARING HOUSING
27	1		CUP POINT SET SCREW, # 10-32 UNF-2A

UNLESS OTHERWISE SPECIFIED: DIMENSIONS ARE IN INCHES -TOLERANCES-		CAD GENERATED DRAWING, DO NOT MANUALLY UPDATE DO NOT SCALE DRAWING		HYTEC, INC	
DECIMALS .XX = +/- .03 .XXX = +/- .010	ANGULAR = +/- .30° SURFACE FINISH = 250				
FINISH		SIGNATURE	DATE	DWG. NO.	SHEET NO.
		DESIGNED	ROGER L. SMITH	11-17-97	
		DRAWN	ROGER L. SMITH	11-17-97	
		CHECKED	HARRY SALAZAR	12-05-97	
		ENGR.	ERIC PONSLER	12-05-97	
		APPROVED	T. THOMPSON	12-05-97	
PART NO. D972101-1				SCALE 1/2	REVISION B

8

7

6

5

4

3

2

1

8

7

6

5

4

3

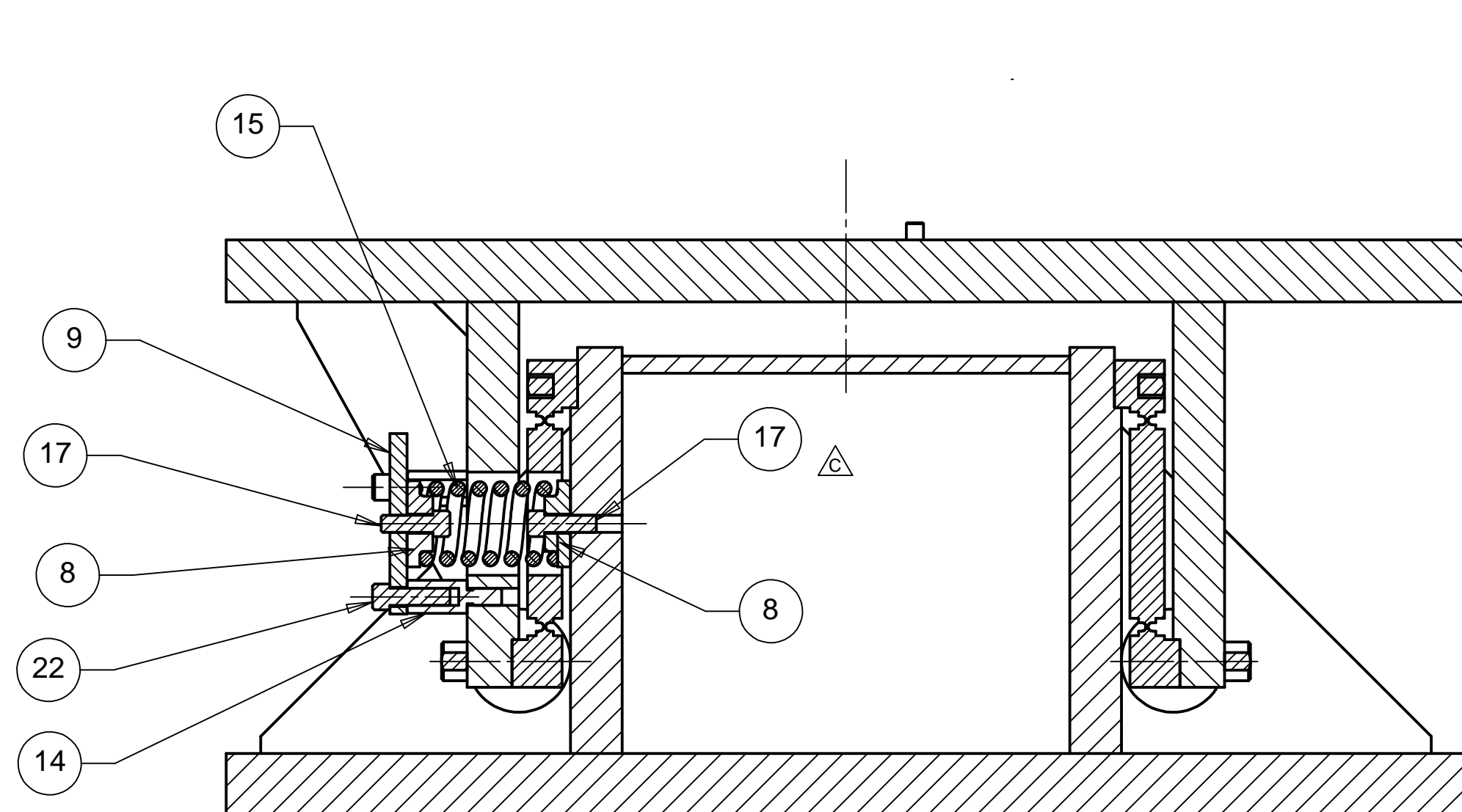
2

1

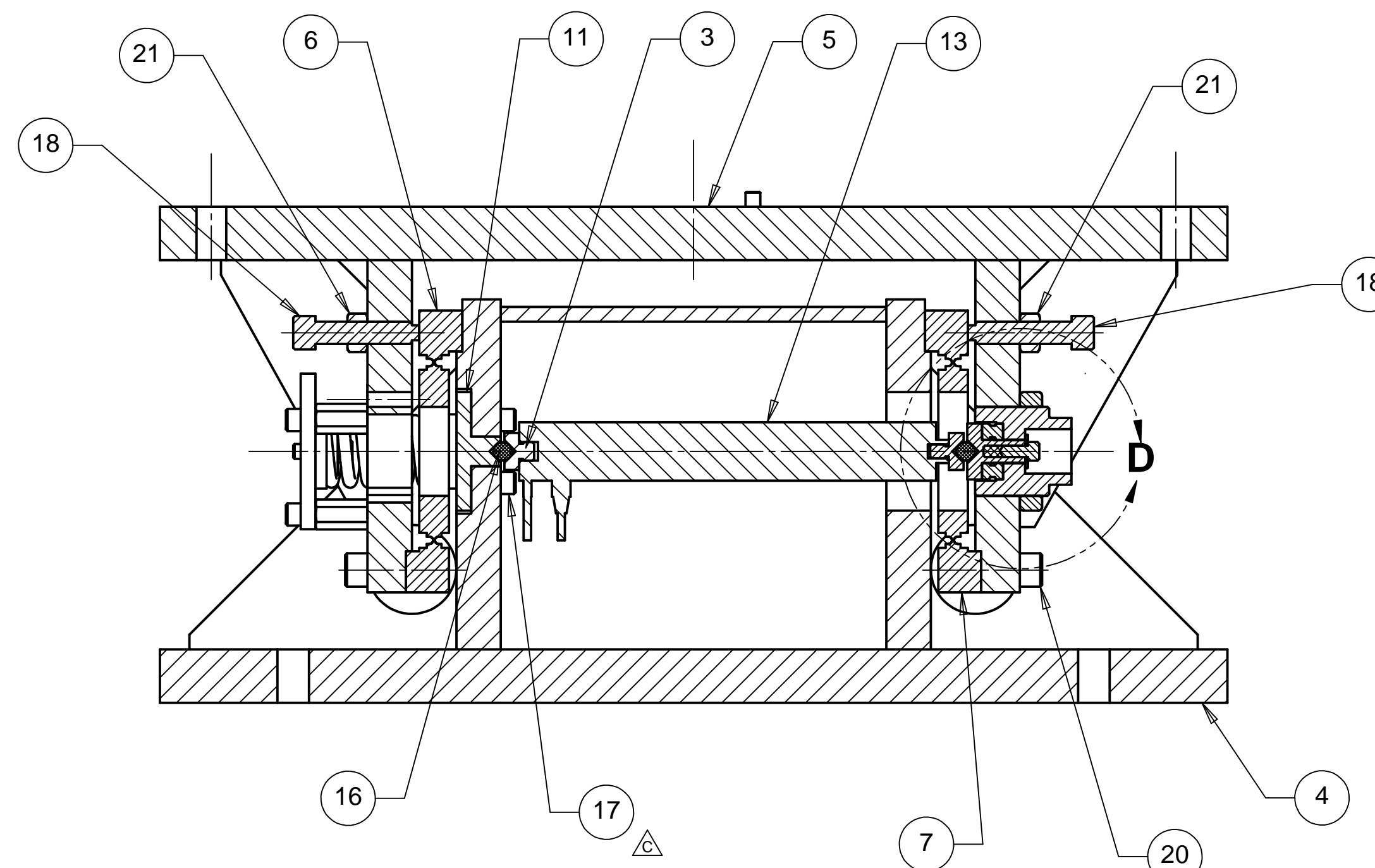
REVISIONS		DATE	APPROVED
REV	DESCRIPTION		
A	SEE ECN# D972101-A FOR CHANGE LIST	03/16/99	T. THOMPSON
B	SEE ECN# D972101-B FOR CHANGE LIST	05/21/99	T. THOMPSON
C	SEE ECN# D972101-C FOR CHANGE LIST	10/19/99	T. THOMPSON

D

D



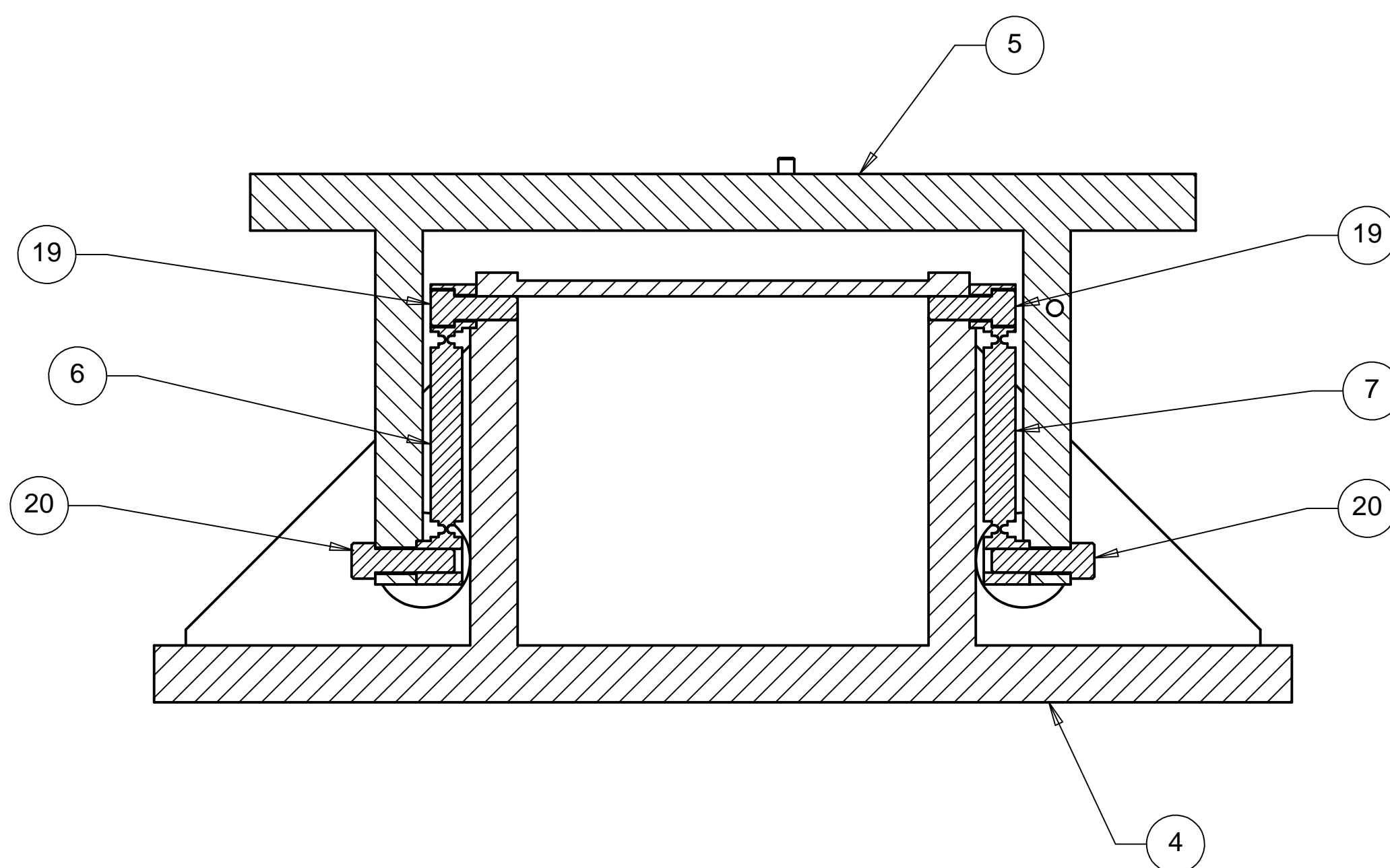
SECTION B - B



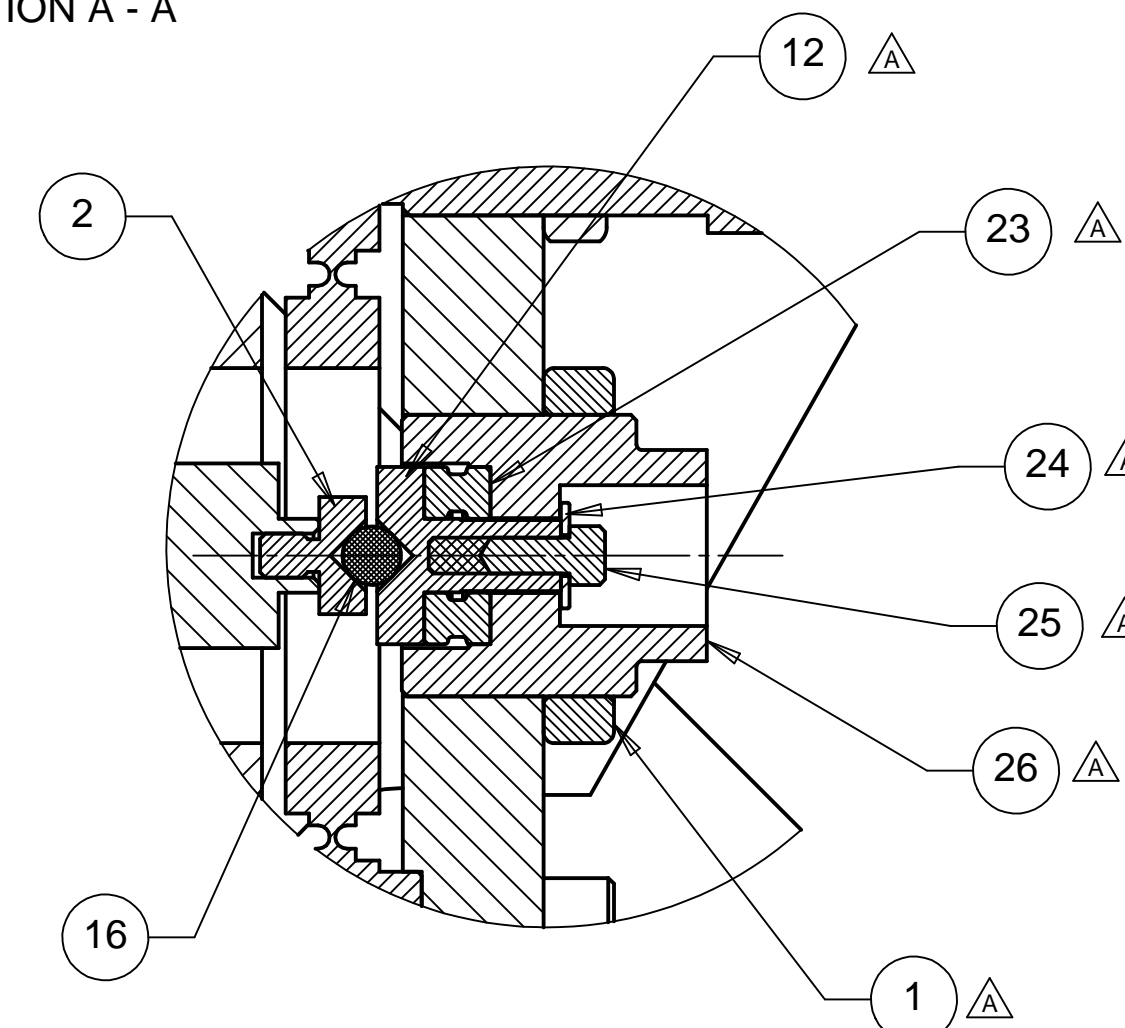
SECTION A - A

C

C



SECTION C - C



DETAIL D
SCALE 1:1

B

B

A

A

8

7

6

5

4

3

2

1

PARTS LIST			
UNLESS OTHERWISE SPECIFIED: DIMENSIONS ARE IN INCHES -TOLERANCES-		CAD GENERATED DRAWING, DO NOT MANUALLY UPDATE DO NOT SCALE DRAWING	
DECIMALS .X = +/- .1 .XX = +/- .03 .XXX = +/- .010		ANGULAR = +/- .30° SURFACE FINISH = 250	
FINISH	SIGNATURE	DATE	TITLE
	ROGER L. SMITH	11-17-97	HYTEC, INC
DRAWN	ROGER L. SMITH	11-17-97	LIGO FINE X TRANSLATION ASSEMBLY
CHECKED	HARRY SALAZAR	12-05-97	DWG. NO. D972101
ENGR.	ERIC PONSLER	12-05-97	SIZE D
APPROVED	T. THOMPSON	12-05-97	SHEET NO. 2 of 2
PART NO. D972101-1			SCALE 1/2
			REVISION B