

**PROCESS SYSTEMS INTERNATIONAL
DOCUMENT APPROVAL CHECKLIST**

PROJECT NAME: Super
PSI DOC. NO. V-049-8-320

NOTE: THIS REVIEW DOES NOT RELIEVE THE SELLER OR CONTRACTOR OF ANY OBLIGATIONS UNDER THE P.O. OR CONTRACT.

- FA = FINAL APPROVAL
- AS = APP'D AS NOTED - REVISE & RESUBMIT
- AF = APPROVED FOR FABRICATION
- NA = NOT APPROVED
- RP = RELEASED FOR PROCUREMENT OF MATERIALS ONLY
- RR = REVISE & RESUBMIT

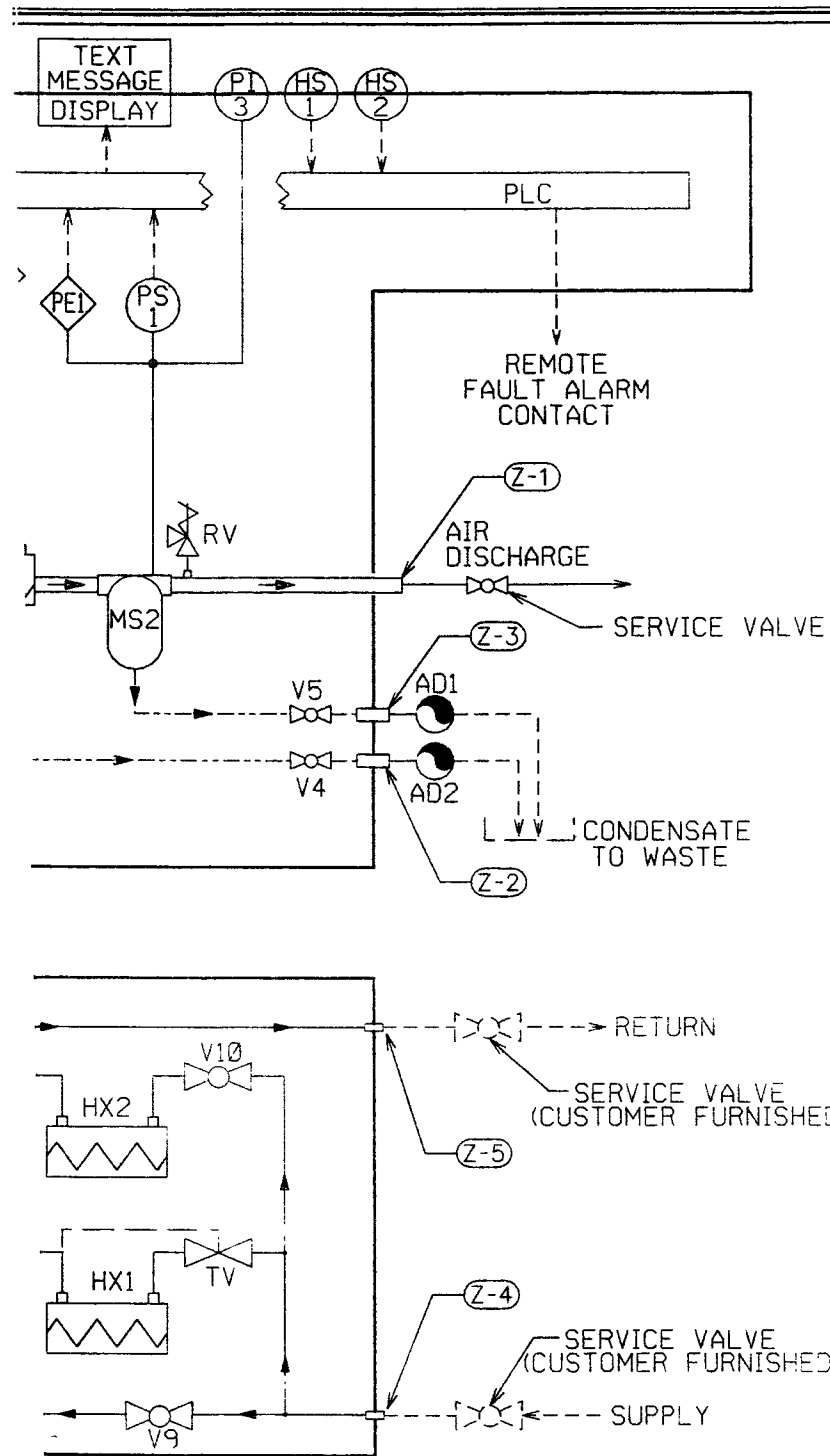
BY B. Byff DATE 5/21/97

**PROCESS SYSTEMS INTERNATIONAL
DOCUMENT REVIEW CHECKLIST**

PROJECT NAME: _____
PSI DOC. NO. _____

CHK	BY/DATE
PROJECT ENG	<u>Am 5/21/97</u>
MECHANICAL	
STRESS	
ELECTRICAL	
PROCESS	
MFG. ENG.	
MANUF	
Q.A.	
DRAFTING	<u>REC 5/21/97</u> <u>D. M. (W) - 5-21-97</u>

VENDOR NAME: J.P.L. Consulting Service
REVISION NO: AS A
SUBMITTAL NO: 25
STATUS: Rev/APP.



LOW DIAGRAM

- LINE TYPES:
- COMPRESSED AIR LINES
 - CONDENSATE DRAIN LINES
 - OIL LINES
 - OTHER CONTROL LINES
 - CONTROL AIR LINES
 - INSTRUMENTATION LINES

LEGEND

AD-1,2	AUTOMATIC CONDENSATE DRAIN
B	BREATHER
BV	BLEED-OFF VALVE
C-1	COMPRESSOR 1st STAGE
C-2	COMPRESSOR 2nd STAGE
CV	CAPACITY CONTROL VALVE
DI-1	DIFF. PRESS. INDICATOR, OIL FILTER
DI-2	DIFF. PRESS. INDICATOR, INLET AIR FILTER
EJ	EXPANSION JOINT
F-1	AIR INLET FILTER
F-2	CONTROL AIR FILTER
F-3	OIL FILTER
F-4	STRAINER, OIL PUMP SUCTION
HX1	INTERCOOLER
HX2	AFTERCOOLER
HX3	OIL COOLER
HS-1	START
HS-2	STOP
LG	LEVEL GAUGE, OIL SUMP
M-1	LUBE OIL PUMP MOTOR
M-2	CABINET VENT FAN MOTOR
M-3	COMPRESSOR MOTOR
MS-1	MOISTURE SEPARATOR, INTERCOOLER
MS-2	MOISTURE SEPARATOR, AFTERCOOLER
OP	OIL PUMP
OS	OIL SUMP
PE-1	PRESSURE TRANSDUCER
PI-1	PRESS. GAUGE, 1st STAGE DISCHARGE
PI-2	PRESS. GAUGE, LUBE OIL
PI-3	PRESS. GAUGE, 2nd STAGE DISCHARGE
PS-1	PRESSURE SWITCH, AIR
PS-2	PRESSURE SWITCH, OIL
QL-1	STANDBY
QL-2	OIL PUMP RUN
QL-3	VENT FAN RUN
QL-4	COMPRESSOR RUN
QL-5	LOADED
QL-6	ALARM
RTD	RESISTANCE TEMPERATURE DETECTOR
RV	RELIEF VALVE
SC-1	SIGNAL COND., 1ST STAGE DISCH. AIR TEMP.
SC-2	SIGNAL COND., 2ND STAGE SUC. AIR TEMP.
SC-3	SIGNAL COND., 2ND STAGE DISCH. AIR TEMP.
SC-4	SIGNAL COND., LUBRICATION OIL TEMP.
SHV	SHUTTLE VALVE
SI-1-3	SILENCER
TS-1	TEMP. SWITCH, CABINET
TV	TEMP. REGULATING VALVE
V-1,2	CHECK VALVE
V-3	NEEDLE VALVE
V-4-10	SHUT-OFF VALVE
XV-1	SOLENOID VALVE, 4-WAY
Z-1	AIR OUT, 1-1/2" MNPT
Z-2	INTERCOOLER CONDENSATE DRAIN, 1/2" FNPT
Z-3	AFTERCOOLER CONDENSATE DRAIN, 1/2" FNPT
Z-4	WATER IN, 1-1/4" MNPT
Z-5	WATER OUT, 1-1/4" MNPT

MAY 20 1997

PSIDWG #V049-8-320

Rogers Machinery Co, Inc
Central Engineering
Portland, Oregon, 97223

PIPING & INSTRUMENTS
KOBELCO KNW SERIES OIL-FREE
MODEL KNW 0, WATERCOOLED
STANDARD CONTROL

DRAWING NUMBER
KPB-2173-A

LI90-D970728-00-V