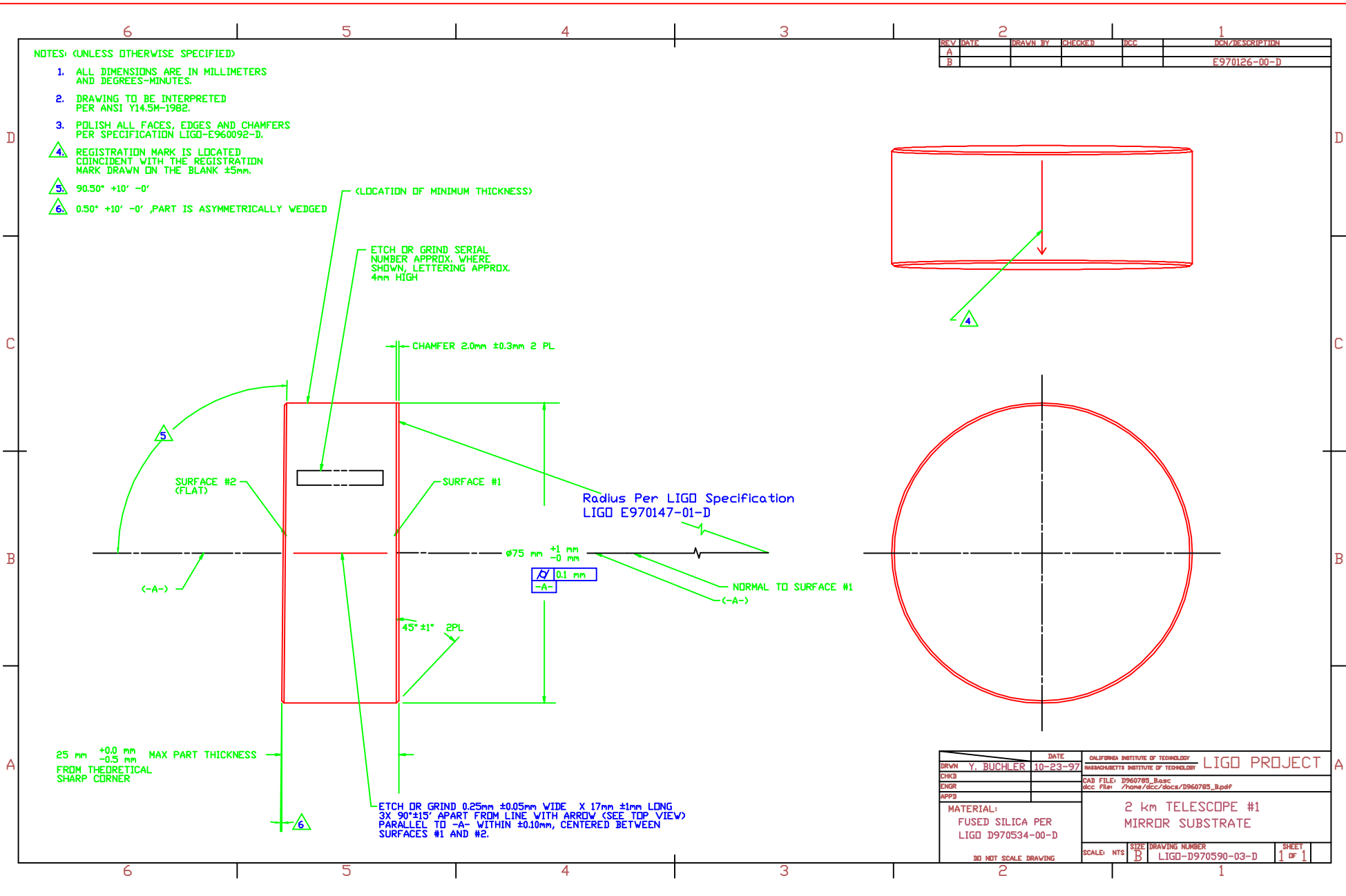


NOTES: (UNLESS OTHERWISE SPECIFIED)

1. ALL DIMENSIONS ARE IN MILLIMETERS AND DEGREES-MINUTES.
2. DRAWING TO BE INTERPRETED PER ANSI Y14.5M-1982.
3. POLISH ALL FACES, EDGES AND CHAMFERS PER SPECIFICATION LIGO-E960092-D.
4. REGISTRATION MARK IS LOCATED COINCIDENT WITH THE REGISTRATION MARK DRAWN ON THE BLANK ±5mm.
5. 90.50° +10' -0'
6. 0.50° +10' -0', PART IS ASYMMETRICALLY WEDGED

REV	DATE	DRAWN BY	CHECKED	DCI	DCN/DESCRIPTION
A					
B					E970126-00-D



DATE	10-23-97	CALIFORNIA INSTITUTE OF TECHNOLOGY	LIGO PROJECT
DRWN	Y. BUCHLER	MASSACHUSETTS INSTITUTE OF TECHNOLOGY	
CHKD		CAD FILE: D960785_Base.dwg	
ENGR		doc FILE: /home/dcc/dccc/D960785_B.pdf	
APPD			
MATERIAL:	2 km TELESCOPE #1 MIRROR SUBSTRATE		
FUSED SILICA PER LIGO D970534-00-D	SCALE: NTS	SIZE: B	DRAWING NUMBER: LIGO-D970590-03-D
3D NET SCALE DRAWING			SHEET 1 OF 1