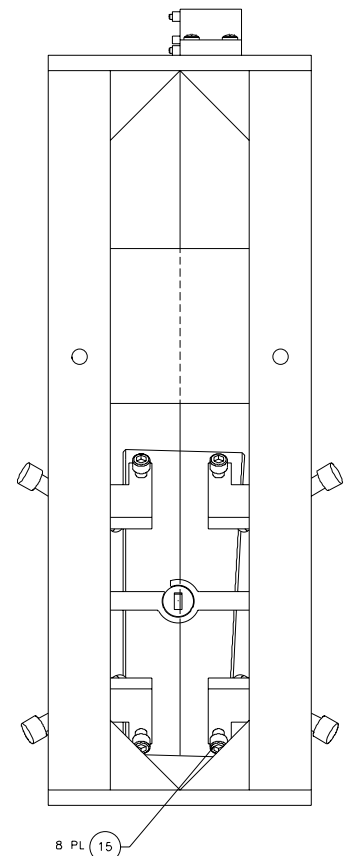
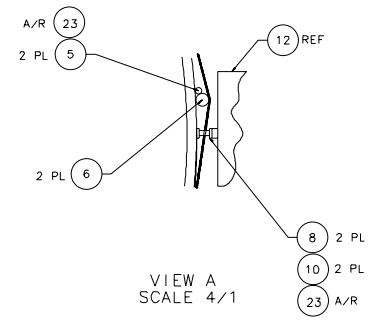
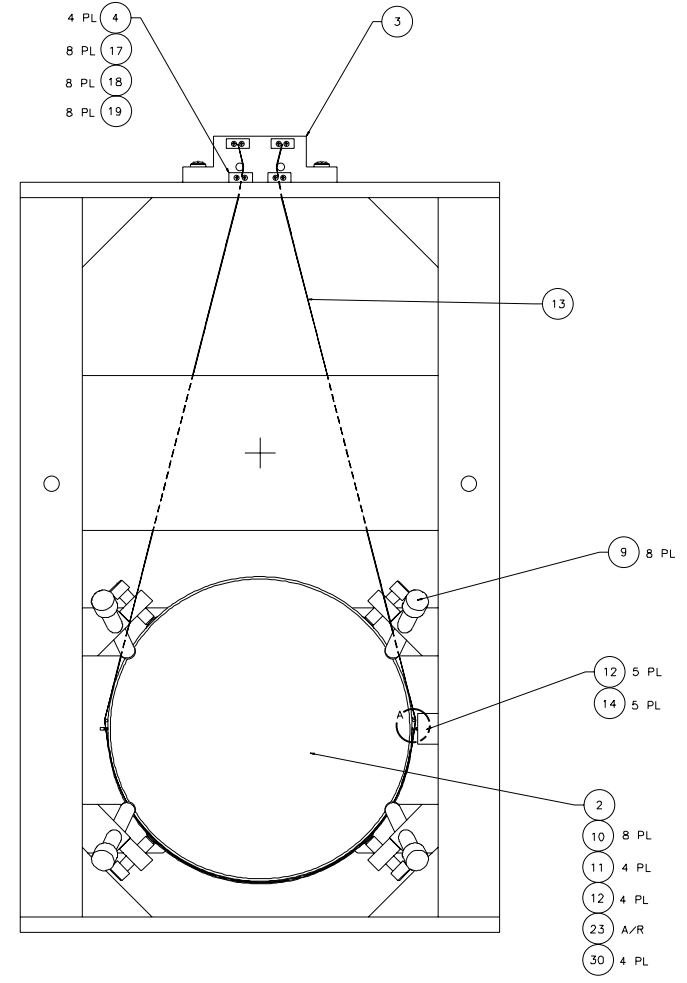
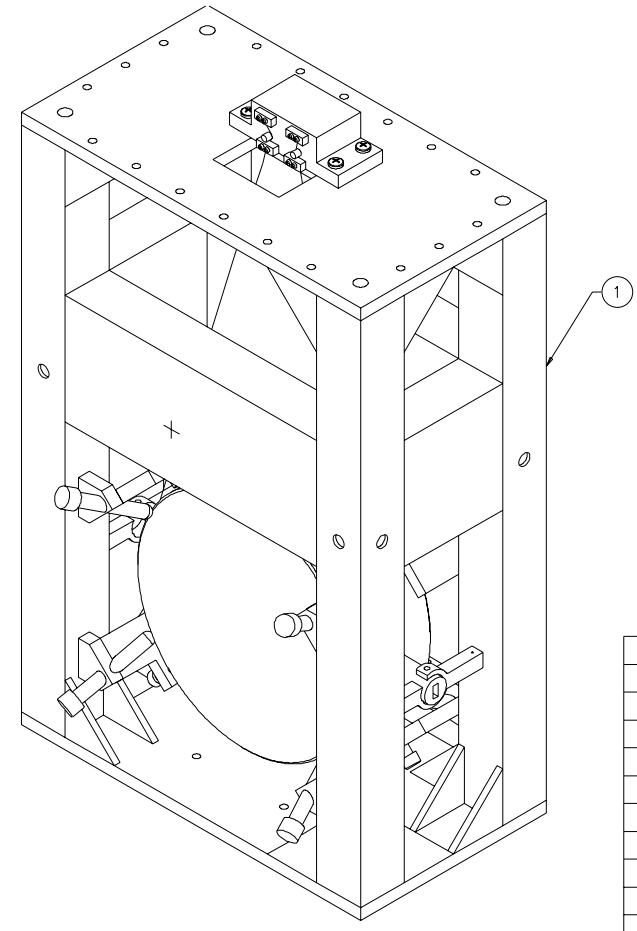
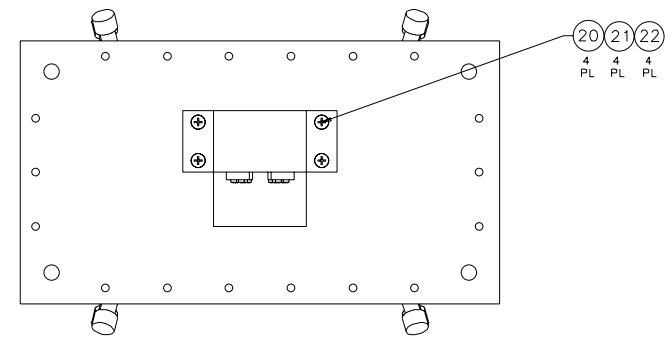


NOTES: (UNLESS OTHERWISE SPECIFIED)
 1. SPECIFICATIONS FOR THE CONSTRUCTION OF THIS ASSEMBLY ARE COVERED IN THE LARGE OPTIC SUSPENSION BALANCING SPECIFICATION, LIGO E970154.
 ② MATERIAL: CONDUCTIVE TEFLON, MANUF. BY FURON DIXON, 386 METACOM AVE., BRISTOL, RI, 02809, (401)253-2000, AND DESIGNATED BY THE NAME FURON DIXON COMPOUND 1042.
 ③ HEIGHT ADAPTER IS NOT SHOWN FOR CLARITY. IT IS BOLTED TO THE TOP OF THE LOS STRUCTURE ASSEMBLY USING THE HARDWARE ITEM NOS. 25-28. INSTRUCTIONS INCLUDED IN LIGO E970154.

| REV | DATE | DRAWN BY | CHECKED | DCC | DCN/DESCRIPTION |
|-----|--------|----------|---------|-----------|-------------------------|
| A | 4/8/98 | J. Hazel | | L. Turner | E980077/INITIAL RELEASE |



| | | | | |
|-----|------------------------------|---|----------------------|----|
| | D970180 | WINCH FIXTURE | | 41 |
| | | | | 40 |
| | D970074 | FIXTURE, MAGNET-TO-DUMBBELL STANDOFF | | 39 |
| | | | | 38 |
| | D960752 | FIXTURE, OPTICAL LEVELER | | 37 |
| | D960753 | FIXTURE, WIRE AND OPTICS | | 36 |
| | D970578 | FIXTURE, GUIDE ROD, RM, 2K | | 35 |
| | D960050 | FIXTURE, MAGNET/STANDOFF ASSY | | 34 |
| | D970169 | MAGNET STRENGTH FIXTURE | | 33 |
| | D970616 | COIL STRENGTH FIXTURE | | 32 |
| | | | | 31 |
| | D970615 | PAM SCREW | | 30 |
| | | | | 29 |
| 18 | | 1/4-20 x 1.5 LG SHCS | STAINLESS, Ag PLTD | 28 |
| 18 | | 1/4-20 LOCK WASHER | STAINLESS, AG PLTD | 27 |
| 18 | | 1/4-20 FLAT WASHER | STAINLESS, AG PLTD | 26 |
| 12 | | 1/4-20 HEX NUT | STAINLESS | 25 |
| 1 | D970579 | HEIGHT ADAPTER | ③ | 24 |
| A/R | | EPOXY, VAC-SEAL | | 23 |
| 4 | COMMERCIAL EQUIV NAS620416L | WASHER, FLAT, #1/4 | STAINLESS | 22 |
| 4 | COMMERCIAL EQUIV MS35338-139 | WASHER, SPLIT LOCK, #1/4 | STAINLESS | 21 |
| 4 | U-C COMPONENTS P/N C-2016-NA | SCREW, SHCS, 1/4-20 x 1.00 | STAINLESS, Ag PLTD | 20 |
| 8 | COMMERCIAL EQUIV NAS620C4L | WASHER, FLAT, #4 | STAINLESS | 19 |
| 8 | COMMERCIAL EQUIV MS35338-135 | WASHER, SPLIT LOCK, #4 | STAINLESS | 18 |
| 8 | U-C COMPONENTS P/N C-412-NA | SCREW, SHCS, 4-40 x .75 | STAINLESS, Ag PLTD | 17 |
| | | | | 16 |
| 8 | | SCREW, HEX HEAD, 3/8-16 x 1.50 | ② | 15 |
| 6 | U-C COMPONENTS P/N T-1003-NA | SET SCREW, SOCKET, 10-32 x .188 | STAINLESS, Ag PLTD | 14 |
| A/R | | WIRE, ϕ .0120 \pm -.0003* | MUSIC WIRE | 13 |
| 5 | D960138 | SENSOR/ACTUATOR HEAD ASSEMBLY | | 12 |
| 4 | D970075 | DUMBBELL STANDOFF | | 11 |
| 10 | D960501 | MAGNET | | 10 |
| 8 | D960499 | LOS CHAMFER STOP | | 9 |
| 2 | D970567 | RECYCLING MIRROR SIDE STANDOFF | | 8 |
| | | | | 7 |
| 2 | D970565 | RECYCLING MIRROR WIRE STANDOFF | | 6 |
| 1 | D970566 | RECYCLING MIRROR GUIDE ROD | | 5 |
| 4 | D960134 | LOS CLAMP, SUSPENSION BLOCK | | 4 |
| 1 | D960144 | LOS SUSPENSION BLOCK | | 3 |
| 1 | COATING SPEC E980070 | OPTIC, ϕ 25cm x 10cm THICK | RECYCLING MIRROR, 2K | 2 |
| 1 | D970551 | RECYCLING MIRROR LOS STRUCTURE ASSEMBLY | | 1 |

| APPROVALS | DATE | TITLE | REV |
|-----------|------|---|-----|
| J. Hazel | 5/98 | LARGE OPTIC SUSPENSION ASSEMBLY (LOS1e) FOR RECYCLING MIRROR, 2K (RM, 2K) | A |

DO NOT SCALE DRAWING

| | | | |
|----------|-----|-------|-----|
| MATERIAL | N/A | SIZE | E |
| FINISH | N/A | SCALE | 1/2 |

FILE LOCATION: home/dcc/docs/D970577.pdf

SCALE: 1/2

SHEET: 1 OF 1