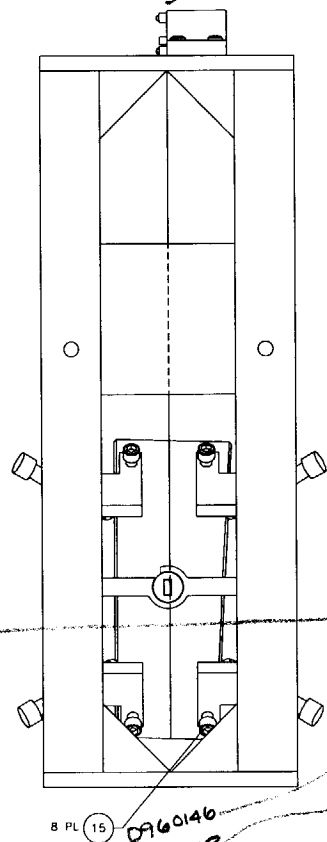
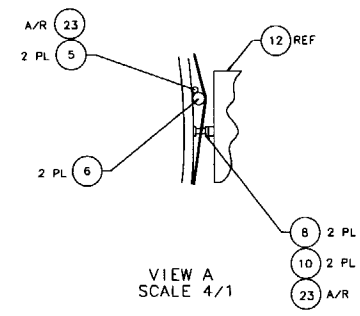
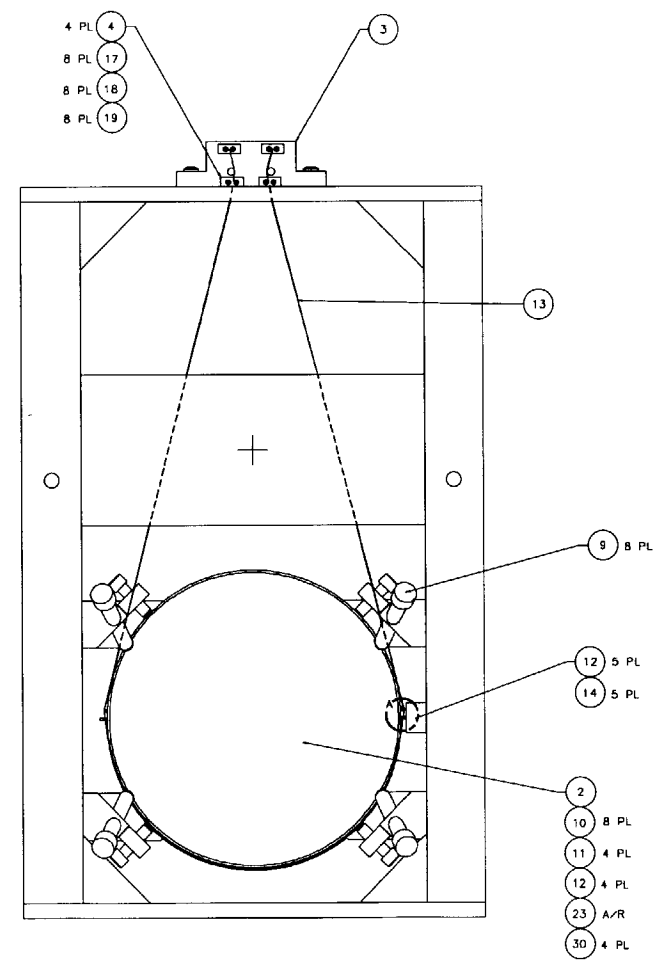
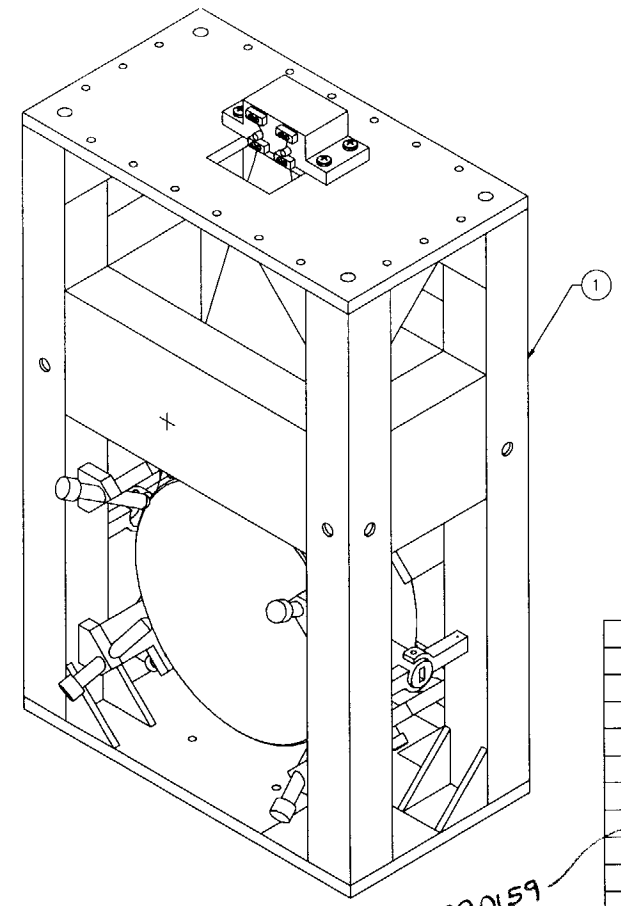
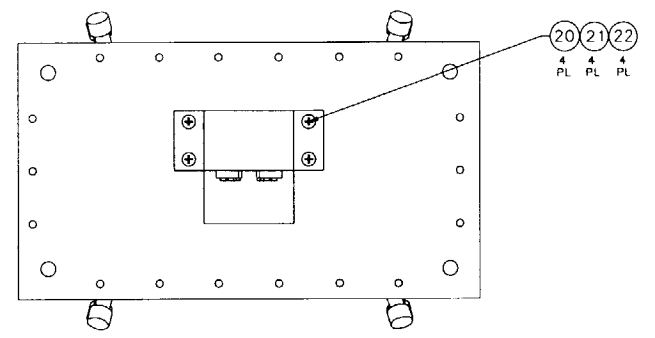


REV	DATE	DRAWN BY	CHECKED	DCI	DOV/DESCRIPTION
A	4/8/98	J. Hozei		L. Turner	ESB0077/INITIAL RELEASE

NOTES: (UNLESS OTHERWISE SPECIFIED)
 1. SPECIFICATIONS FOR THE CONSTRUCTION OF THIS ASSMBLY ARE COVERED IN THE LARGE OPTIC SUSPENSION BALANCING SPECIFICATION, LIGO E970154.
~~MATERIAL: CONDUCTIVE TEFLON, MANUF. BY FURON DIXON, 385 METACOM AVE., BRISTOL, RI, 02809, (401)253-2000, AND DESIGNATED BY THE NAME FURON DIXON COMPOUND 1042.~~
 HEIGHT ADAPTER IS NOT SHOWN FOR CLARITY. IT IS BOLTED TO THE TOP OF THE LOS STRUCTURE ASSEMBLY USING THE HARDWARE ITEM NOS. 25-28. INSTRUCTIONS INCLUDED IN LIGO E970154.



D990199 SIDE BLOCKS, 2TM 2K

ITEM NO.	DESCRIPTION	QTY	MATERIAL
D970180	WINCH FIXTURE	41	
D970074	FIXTURE, MAGNET-TO-DUMPELL STANDOFF	39	
D960752	FIXTURE, OPTICAL LEVELER	37	
D960753	FIXTURE, WIRE AND OPTICS	36	
D970573	FIXTURE, GUIDE ROD, 1TM, 2K	35	
D960050	FIXTURE, MAGNET/STANDOFF	34	
D970169	MAGNET STRENGTH FIXTURE	33	
D970616	COIL STRENGTH FIXTURE	32	
D970615	PAM SCREW	31	
18	1/4-20 x 1.5 LG SHCS	28	STAINLESS, Ag-PLTD
18	1/4-20 LOCK WASHER	27	STAINLESS, Ag-PLTD
18	1/4-20 FLAT WASHER	26	STAINLESS, Ag-PLTD
1	HEIGHT ADAPTER	24	
A/R	EPOXY, VAC-SEAL	23	
4	WASHER, FLAT, #1/4	22	STAINLESS
4	WASHER, SPLIT LOCK, #1/4	21	STAINLESS
4	SCREW, SHCS, 1/4-20 x 1.00	20	STAINLESS, Ag-PLTD
8	WASHER, FLAT, #4	19	STAINLESS
8	WASHER, SPLIT LOCK, #4	18	STAINLESS
8	SCREW, SHCS, 4-40 x .75, 50	17	STAINLESS, Ag-PLTD
8	SCREW, HEX HEAD, 3/8-16 x 1.50	16	
6	SET SCREW, SOCKET, 10-32 x .188	15	STAINLESS, Ag-PLTD
A/R	WIRE, .0120"-.0003"	14	MUSIC WIRE
5	SENSOR/ACTUATOR HEAD ASSEMBLY	13	
4	DUMPELL STANDOFF	12	
10	MAGNET	11	
8	LOS CHAMFER STOP	10	
2	LOS MIRROR SIDE STANDOFF	9	
2	LOS MIRROR WIRE STANDOFF	8	
1	LOS MIRROR GUIDE ROD	7	
4	LOS CLAMP, SUSPENSION BLOCK	6	
1	LOS SUSPENSION BLOCK	5	
1	OPTIC, Ø25cm x 10cm THICK	4	INPUT TEST MASS, 2K
1	LOS STRUCTURE ASSEMBLY	3	

UNLESS OTHERWISE SPECIFIED, DIMENSIONS ARE IN INCHES. FRACTIONS DECIMALS ANGLES

APPROVALS: *J. Hozei* DATE: 5/96

TITLE: LARGE OPTIC SUSPENSION ASSEMBLY (LOS1d) FOR INPUT TEST MASS, 2K (1TM, 2K)

FILE LOCATION: home/dcc/docs/D970572.pdf

SCALE: 1/2" = 1"

SHEET 1 OF 1

REDLINE