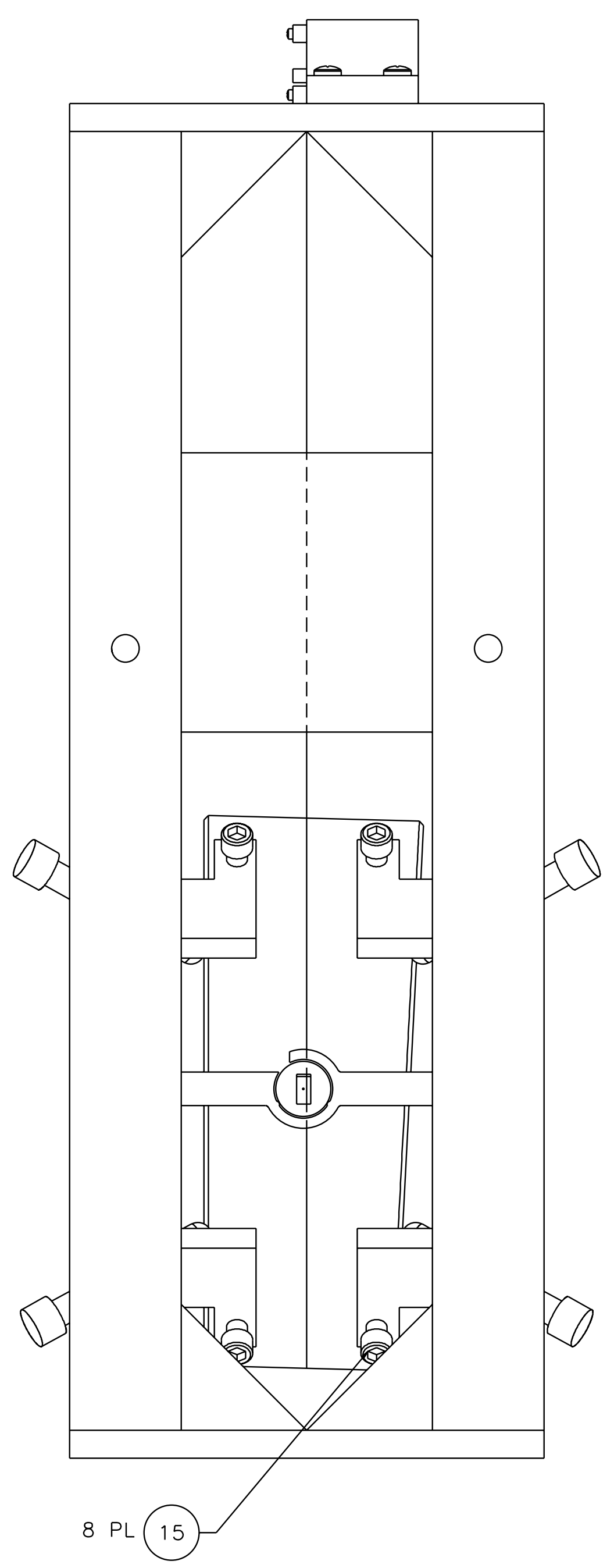
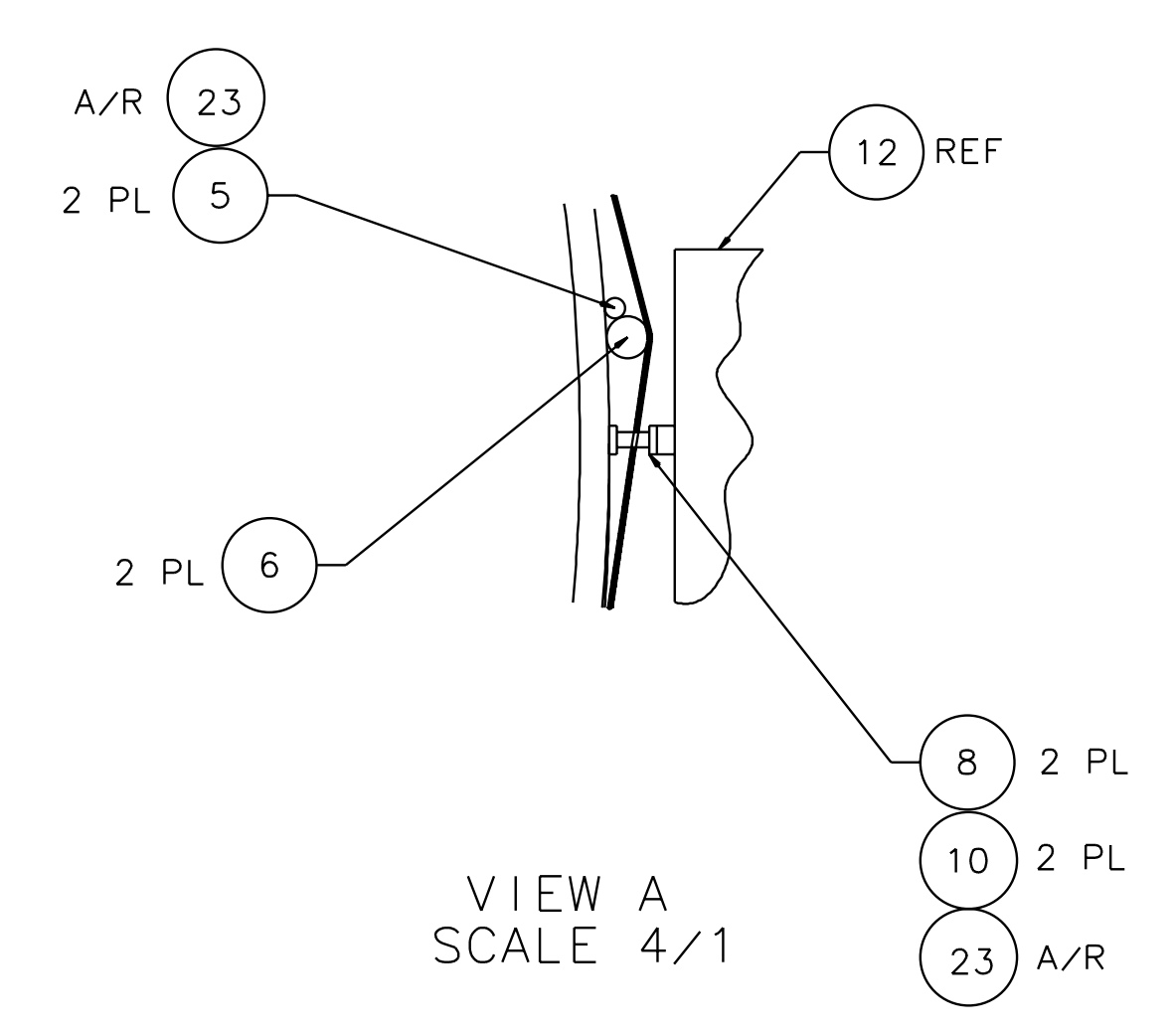
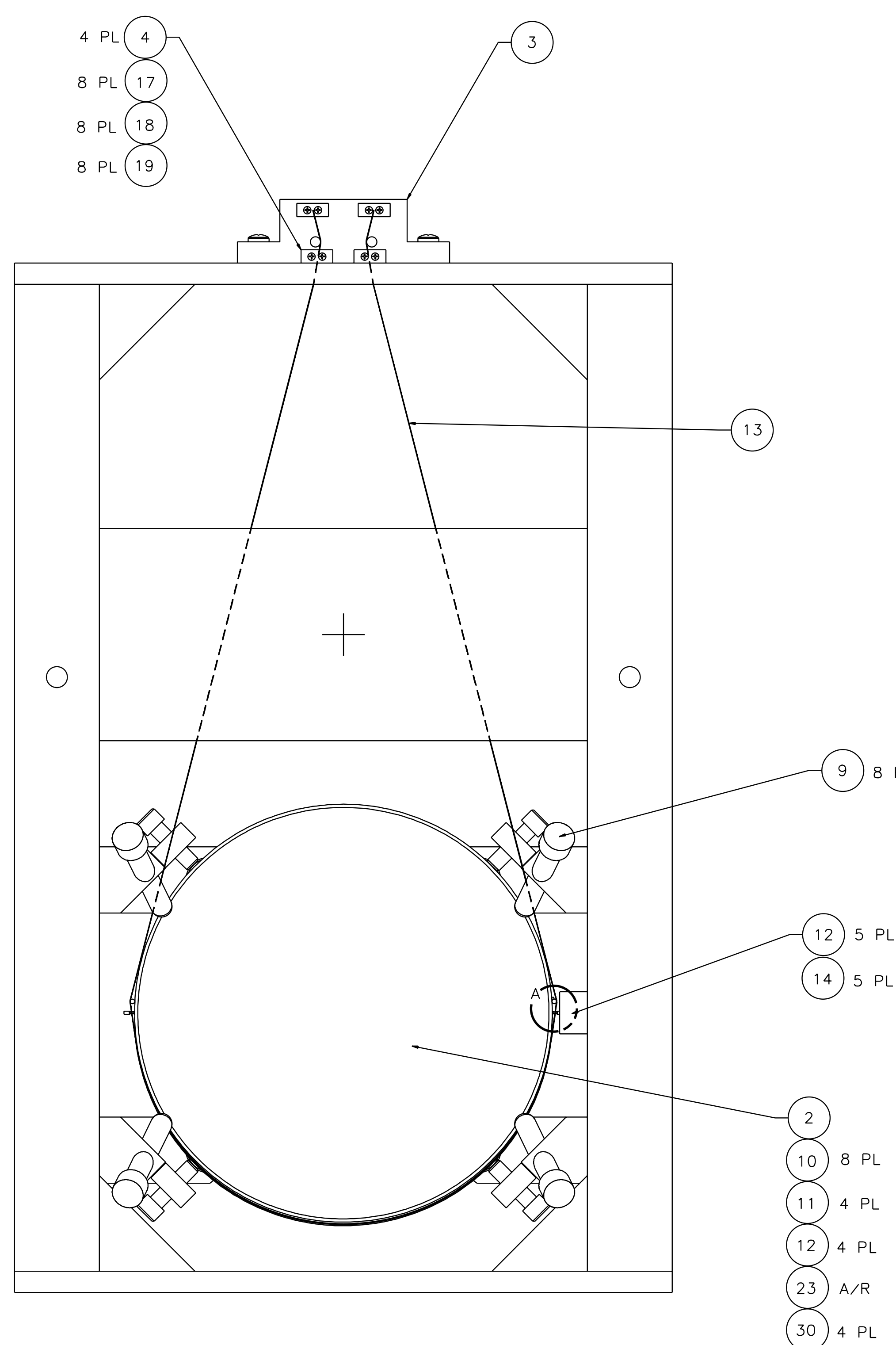
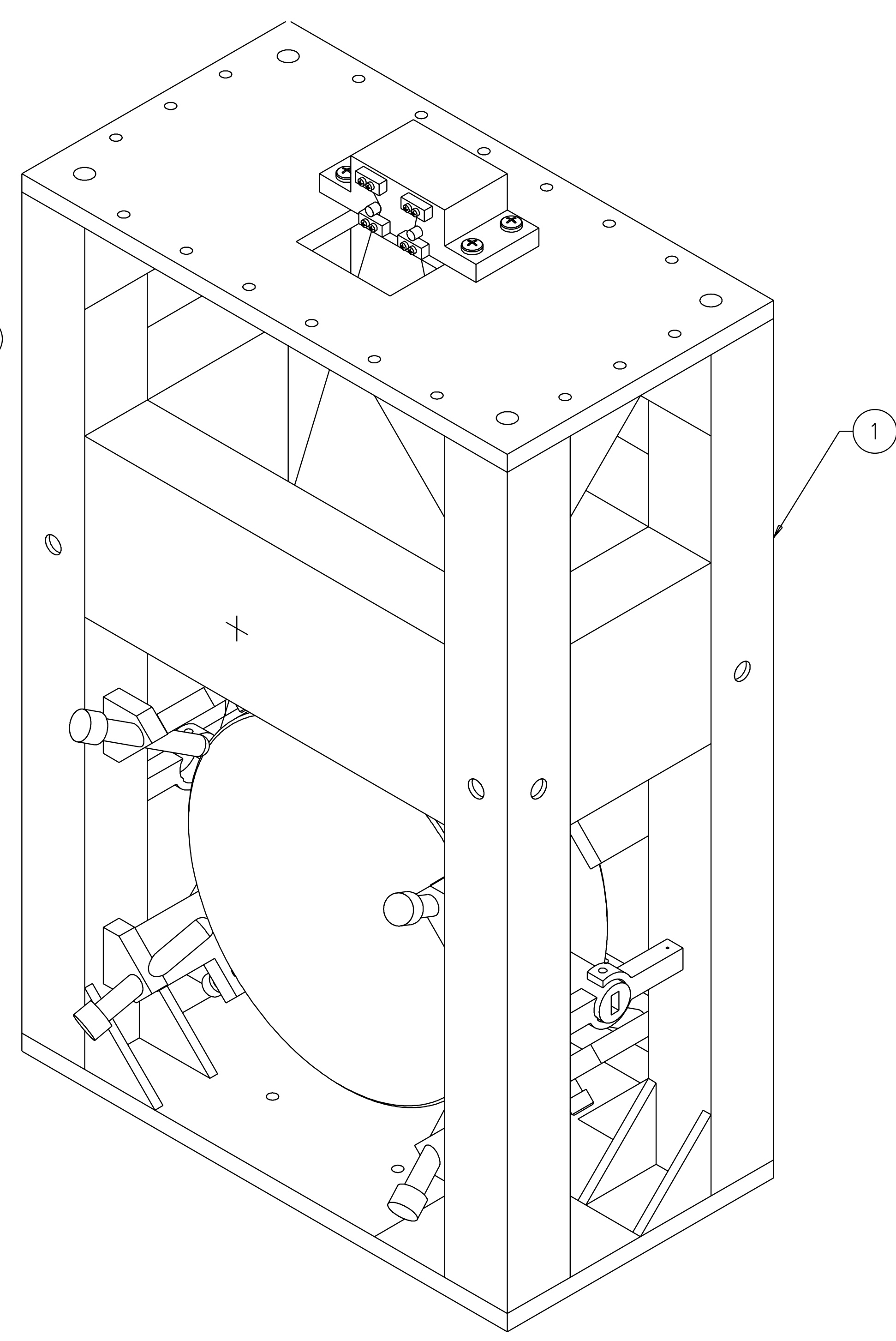
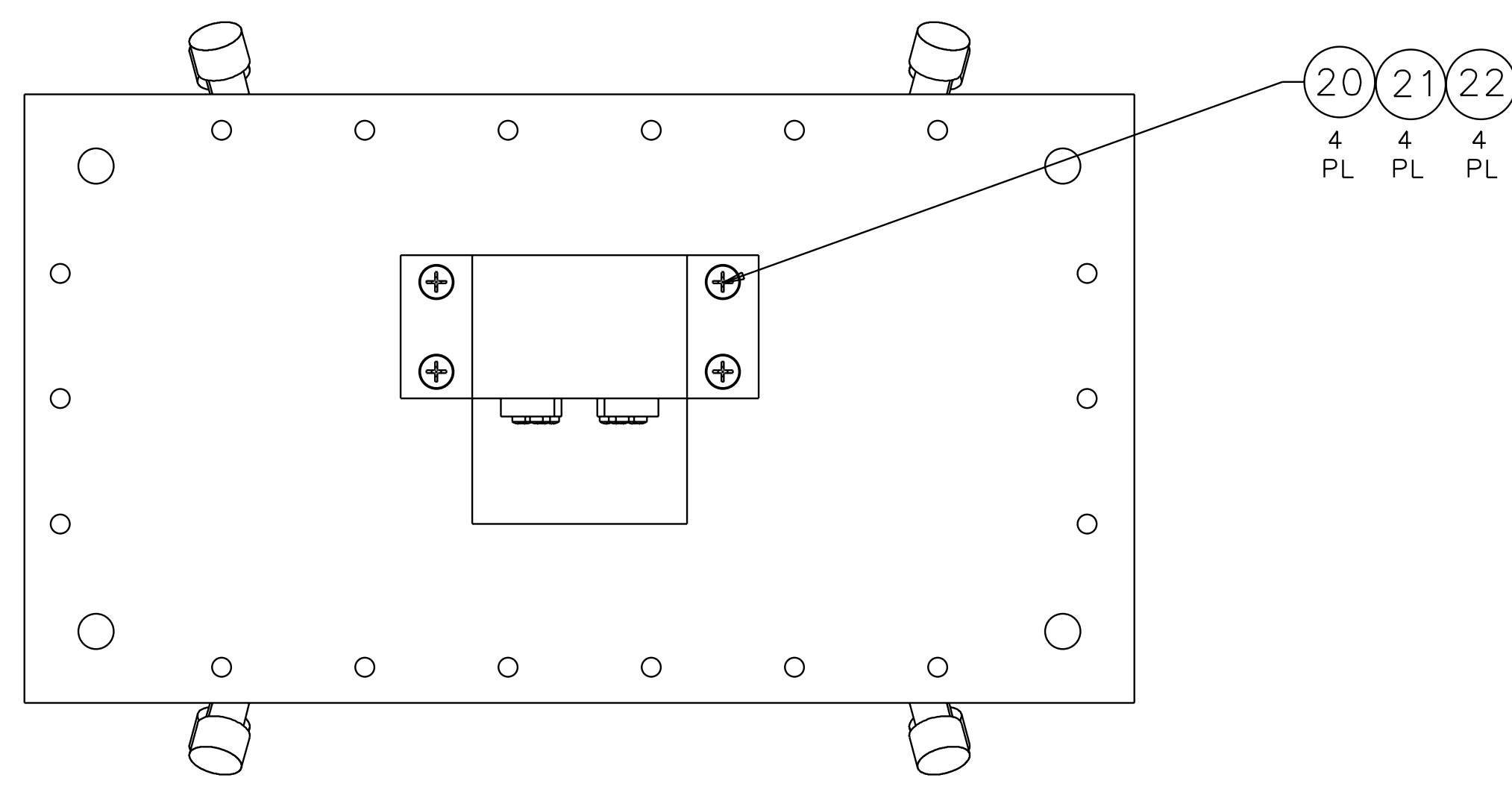


NOTES: (UNLESS OTHERWISE SPECIFIED)
 1. SPECIFICATIONS FOR THE CONSTRUCTION OF THIS ASSEMBLY ARE COVERED IN THE LARGE OPTIC SUSPENSION BALANCING SPECIFICATION, LIGO E970154. HEIGHT ADAPTER IS NOT SHOWN FOR CLARITY. IT IS BOLTED TO THE BOTTOM OF THE LOS STRUCTURE ASSEMBLY USING THE HARDWARE ITEM NOS. 25-28. INSTRUCTIONS INCLUDED IN LIGO E970154.

REV	DATE	DRAWN BY	CHECKED	DCC	DCN/DESCRIPTION
A	4/8/98	J. Hozel		L. Turner	E980077/INITIAL RELEASE
B	4/27/01	J. Romie			E010077/INCCORP. REV A1



QTY	RECD	PART OR IDENTIFYING NO.	MANUFACTURE OR DESCRIPTION	MATERIAL SPECIFICATION	ITEM NO.
					41
					40
					39
					38
		D990188	SIDE BLOCKS, RM		37
		D970180	WINCH FIXTURE		36
		D960753	FIXTURE, WIRE AND OPTICS		35
		D970568	FIXTURE, GUIDE ROD, RM, 4K		34
		D990159	FIXTURE, MAGNET/STAND, GLUING		33
		D970169	MAGNET STRENGTH FIXTURE		32
		D970616	COIL STRENGTH FIXTURE		31
		D970615	PAM SCREW		30
					29
18			1/4-20 x 1.5 LG SHCS	STAINLESS	28
18			1/4-20 LOCK WASHER	STAINLESS	27
18			1/4-20 FLAT WASHER	STAINLESS	26
18		U-C COMPONENTS P/N N-2520-A	1/4-20 HEX NUT	STAINLESS, Ag PLTD	25
1		D970571	HEIGHT ADAPTER, RM, 4K	(2)	24
A/R			EPOXY, VAC-SEAL		23
4		COMMERCIAL EQUIV NAS620416L	WASHER, FLAT, #1/4	STAINLESS	22
4		COMMERCIAL EQUIV MS35338-139	WASHER, SPLIT LOCK, #1/4	STAINLESS	21
4		U-C COMPONENTS P/N C-2016-NA	SCREW, SHCS, 1/4-20 x 1.00	STAINLESS, Ag PLTD	20
8		COMMERCIAL EQUIV NAS620C4L	WASHER, FLAT, #4	STAINLESS	19
8		COMMERCIAL EQUIV MS35338-135	WASHER, SPLIT LOCK, #4	STAINLESS	18
8		U-C COMPONENTS P/N C-408-NA	SCREW, SHCS, 4-40 x .50	STAINLESS, Ag PLTD	17
					16
8		D990690	LOS SAFETY STOP		15
6		U-C COMPONENTS P/N T-1003-NA	SET SCREW, SOCKET, 10-32 x .188	STAINLESS, Ag PLTD	14
A/R			WIRE, ϕ .0120* +/- .0003*	MUSIC WIRE	13
5		D960138	SENSOR/ACTUATOR HEAD ASSEMBLY		12
4		D970075	DUMBBELL STANDOFF		11
10		D960501	MAGNET		10
8		D960499	LOS CHAMFER STOP		9
2		D970567	RECYCLING MIRROR SIDE STANDOFF		8
					7
2		D970565	RECYCLING MIRROR WIRE STANDOFF		6
1		D970566	RECYCLING MIRROR GUIDE ROD		5
4		D960134	LOS CLAMP, SUSPENSION BLOCK		4
1		D960144	LOS SUSPENSION BLOCK		3
1		COATING SPEC E980070	OPTIC, ϕ 25cm x 10cm THICK	RECYCLING MIRROR, 4K	2
1		D970551	RECYCLING MIRROR LOS STRUCTURE ASSEMBLY		1

UNLESS OTHERWISE SPECIFIED DIMENSIONS ARE IN INCHES TOLERANCES ARE: FRACTIONS DECIMALS ANGLES	APPROVALS	DATE	LIGO CALIFORNIA INSTITUTE OF TECHNOLOGY MASSACHUSETTS INSTITUTE OF TECHNOLOGY	
DO NOT SCALE DRAWING	DRAWN J. Hozel	5/96	TITLE	LARGE OPTIC SUSPENSION ASSEMBLY (LOS1c) FOR RECYCLING MIRROR, 4K (RM, 4K)
NEXT ASSEMBLY FINAL	CHECKED		SIZE	E
FILE LOCATION home/dcc/docs/0970564.pdf	MATERIAL N/A		SCALE	1/2
	FINISH N/A		REV	B
			SHEET	1 OF 1