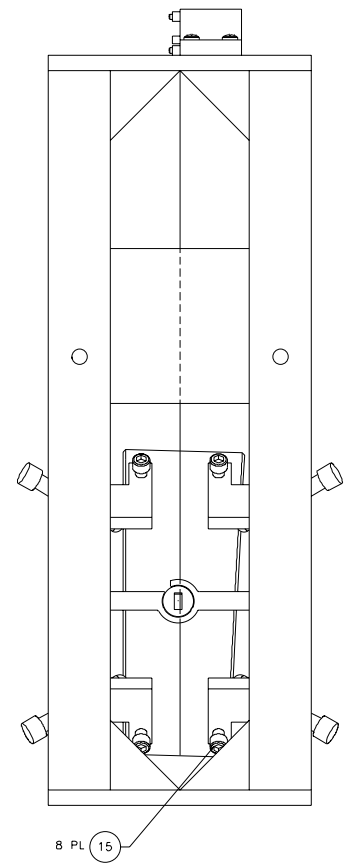
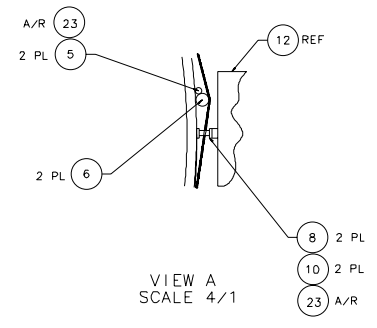
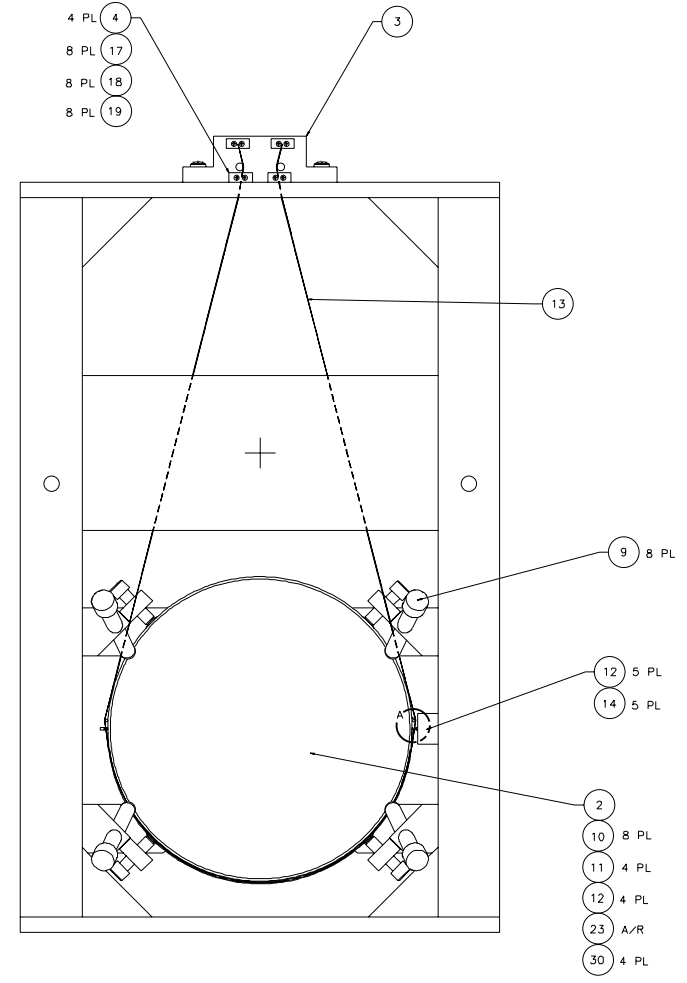
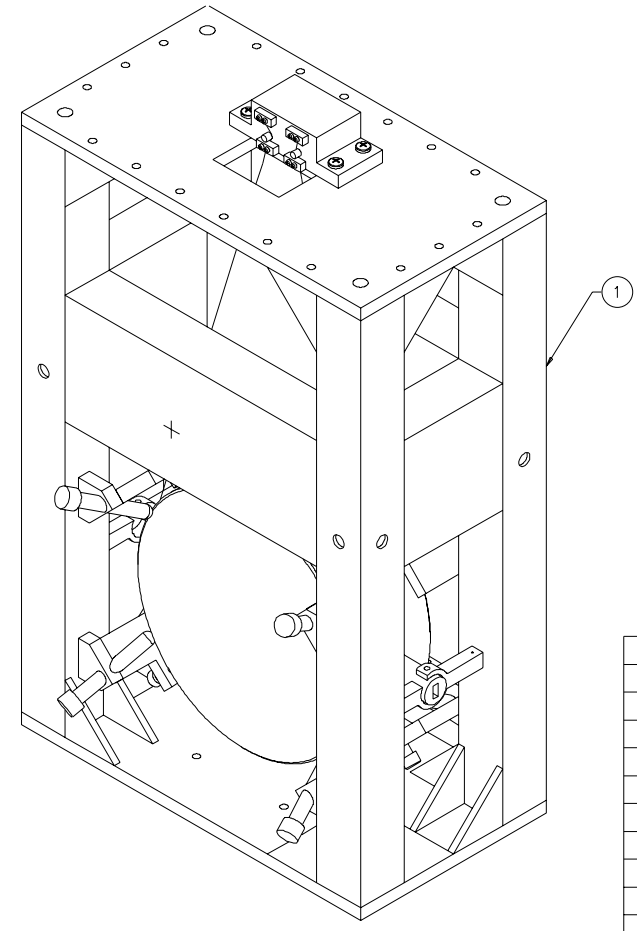
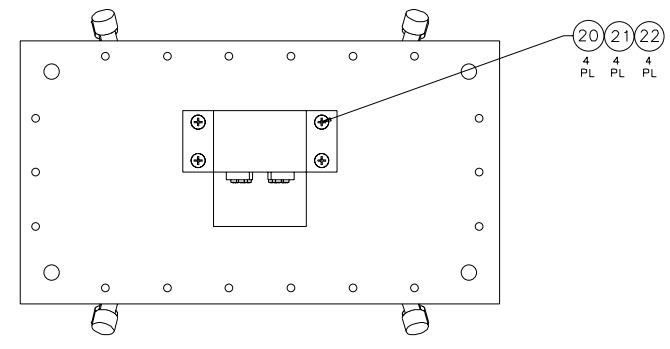


NOTES: (UNLESS OTHERWISE SPECIFIED)  
 1. SPECIFICATIONS FOR THE CONSTRUCTION OF THIS ASSEMBLY ARE COVERED IN THE LARGE OPTIC SUSPENSION BALANCING SPECIFICATION, LIGO E970154.  
 ② MATERIAL: CONDUCTIVE TEFLON, MANUF. BY FURON DIXON, 386 METACOM AVE., BRISTOL, RI, 02809, (401)253-2000, AND DESIGNATED BY THE NAME FURON DIXON COMPOUND 1042.  
 ③ HEIGHT ADAPTER IS NOT SHOWN FOR CLARITY. IT IS BOLTED TO THE TOP OF THE LOS STRUCTURE ASSEMBLY USING THE HARDWARE ITEM NOS. 25-28. INSTRUCTIONS INCLUDED IN LIGO E970154.

REV	DATE	DRAWN BY	CHECKED	DCC	DCN/DESCRIPTION
A	4/8/98	J. Hazel		L. Turner	E980077/INITIAL RELEASE



QTY	ITEM	PART OR IDENTIFYING NO.	DESCRIPTION	MATERIAL SPECIFICATION	UNIT
	D970180		WINCH FIXTURE		41
					40
	D970074		FIXTURE, MAGNET-TO-DUMBBELL STANDOFF		39
					38
	D960752		FIXTURE, OPTICAL LEVELER		37
	D960753		FIXTURE, WIRE AND OPTICS		36
	D970568		FIXTURE, GUIDE ROD, RM, 4K		35
	D960050		FIXTURE, MAGNET/STANDOFF ASSY		34
	D970169		MAGNET STRENGTH FIXTURE		33
	D970616		COIL STRENGTH FIXTURE		32
					31
	D970615		PAM SCREW		30
					29
18			1/4-20 x 1.5 LG SHCS	STAINLESS, Ag PLTD	28
18			1/4-20 LOCK WASHER	STAINLESS, AG PLTD	27
18			1/4-20 FLAT WASHER	STAINLESS, AG PLTD	26
12			1/4-20 HEX NUT	STAINLESS	25
1	D970571		HEIGHT ADAPTER	③	24
A/R			EPOXY, VAC-SEAL		23
4	COMMERCIAL EQUIV NAS620416L		WASHER, FLAT, #1/4	STAINLESS	22
4	COMMERCIAL EQUIV MS35338-139		WASHER, SPLIT LOCK, #1/4	STAINLESS	21
4	U-C COMPONENTS P/N C-2016-NA		SCREW, SHCS, 1/4-20 x 1.00	STAINLESS, Ag PLTD	20
8	COMMERCIAL EQUIV NAS620C4L		WASHER, FLAT, #4	STAINLESS	19
8	COMMERCIAL EQUIV MS35338-135		WASHER, SPLIT LOCK, #4	STAINLESS	18
8	U-C COMPONENTS P/N C-412-NA		SCREW, SHCS, 4-40 x .75	STAINLESS, Ag PLTD	17
					16
8			SCREW, HEX HEAD, 3/8-16 x 1.50	②	15
6	U-C COMPONENTS P/N T-1003-NA		SET SCREW, SOCKET, 10-32 x .188	STAINLESS, Ag PLTD	14
A/R			WIRE, $\phi$ .0120 $\pm$ -.0003*	MUSIC WIRE	13
5	D960138		SENSOR/ACTUATOR HEAD ASSEMBLY		12
4	D970075		DUMBBELL STANDOFF		11
10	D960501		MAGNET		10
8	D960499		LOS CHAMFER STOP		9
2	D970567		RECYCLING MIRROR SIDE STANDOFF		8
					7
2	D970565		RECYCLING MIRROR WIRE STANDOFF		6
1	D970566		RECYCLING MIRROR GUIDE ROD		5
4	D960134		LOS CLAMP, SUSPENSION BLOCK		4
1	D960144		LOS SUSPENSION BLOCK		3
1	COATING SPEC E980070		OPTIC, $\phi$ 25cm x 10cm THICK	RECYCLING MIRROR, 4K	2
1	D970551		RECYCLING MIRROR LOS STRUCTURE ASSEMBLY		1

NEXT ASSEMBLY	FINAL	MATERIAL	N/A	SIZE	E	REV	A
FILE LOCATION	home/dcc/docs/D970564.pdf	FINISH	N/A	SCALE	1/2	SHEET	1 OF 1

UNLESS OTHERWISE SPECIFIED DIMENSIONS ARE IN INCHES TOLERANCES ARE FRACTIONS DECIMALS ANGLES APPROVALS DATE LIGO CALIFORNIA INSTITUTE OF TECHNOLOGY MASSACHUSETTS INSTITUTE OF TECHNOLOGY  
 DRAWN J. Hazel 5/98 TITLE LARGE OPTIC SUSPENSION ASSEMBLY (LOS1c) FOR RECYCLING MIRROR, 4K (RM, 4K)  
 CHECKED  
 DO NOT SCALE DRAWING