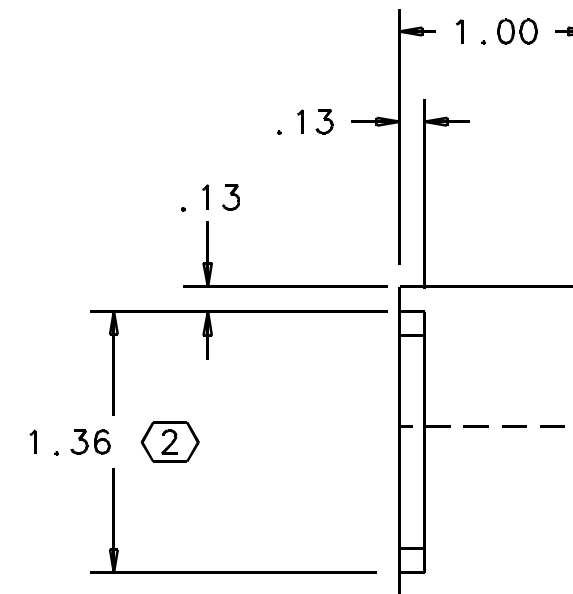
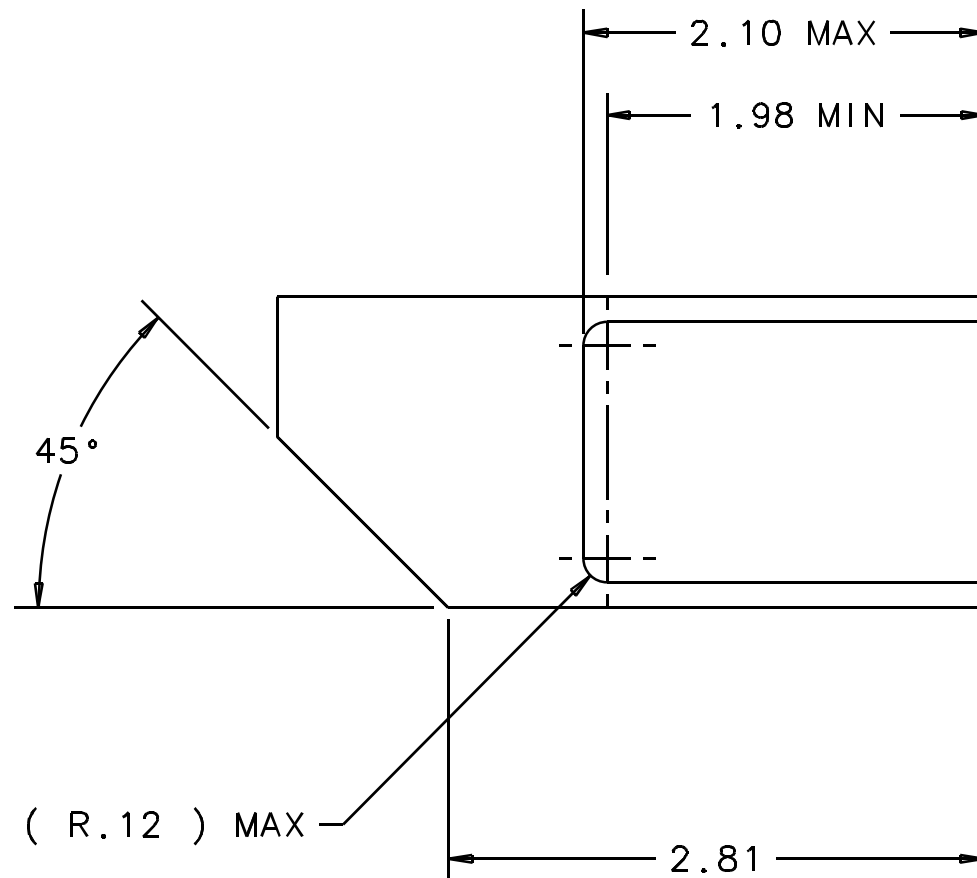
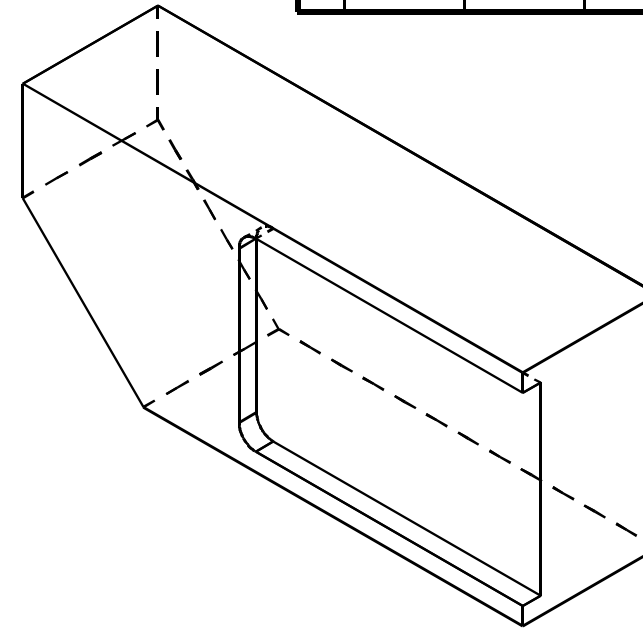
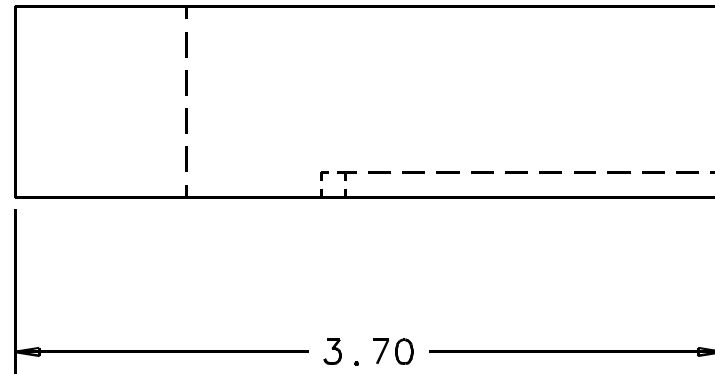


NOTES: (UNLESS OTHERWISE SPECIFIED)

1. BREAK ALL SHARP EDGES.

2. CHAMFER INSIDE POCKET AS REQUIRED FOR WELDING ON NEXT ASSEMBLY.

| REV | DATE | DRAWN BY | CHECKED | DCC | DCN/DESCRIPTION |
|-----|---------|-----------|---------|-----|----------------------------|
| A | 8/28/98 | C. Conley | | | E980218-00/INITIAL RELEASE |



| QTY | REQD | FSCM NO | PART OR IDENTIFYING NO | PART | NOMENCLATURE OR DISCUSSION | MATERIAL SPECIFICATION | ITEM NO |
|-------------------------------|-----------|--------------------------------|------------------------|--|----------------------------|------------------------|---------|
| - | - | - | - | - | - | 304 STAINLESS STEEL | - |
| PARTS LIST | | | | | | | |
| DRWN | C. Conley | DATE | 8/28/98 | CALIFORNIA INSTITUTE OF TECHNOLOGY MASSACHUSETTS INSTITUTE OF TECHNOLOGY LIGO PROJECT | | | |
| CHKD | | 1-Deas CAD file: D970558_A.dwg | | | | | |
| ENGR | | dcc file: D970558-A.pdf | | | | | |
| APPR | | TITLE | | | | | |
| UNLESS OTHERWISE SPECIFIED: | | | | | | LOS3 BRACKET SUPPORT | |
| DIMENSION UNITS ARE inch (mm) | | | | | | SCALE: 1/1 | |
| TOLERANCES ARE: | | | | | | SIZE DRAWING NUMBER | |
| X.XXX: ± 0.005 | | | | | | B D970558-A-D | |
| X.XX: ± 0.01 | | | | | | SHEET | |
| ANGLES: ± 0.5° | | | | | | 1 OF 1 | |
| NEXT ASSEMBLY: D970508 | | | | | | | |