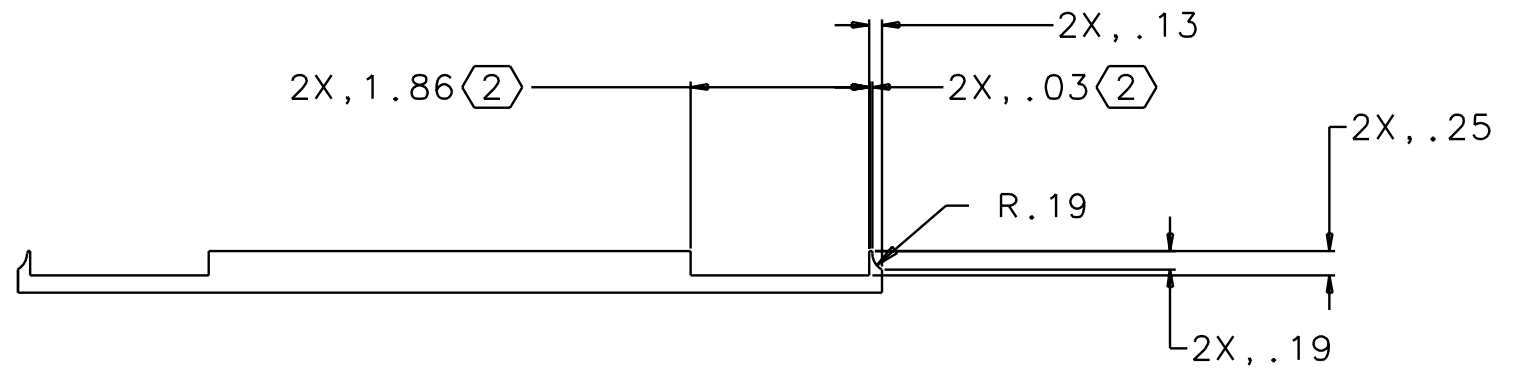
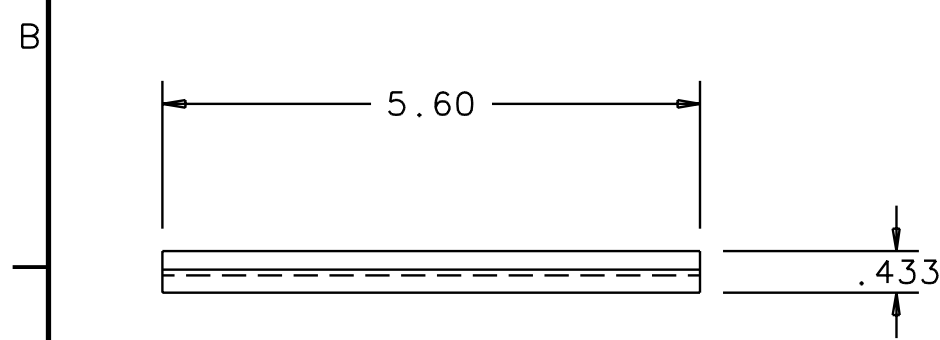
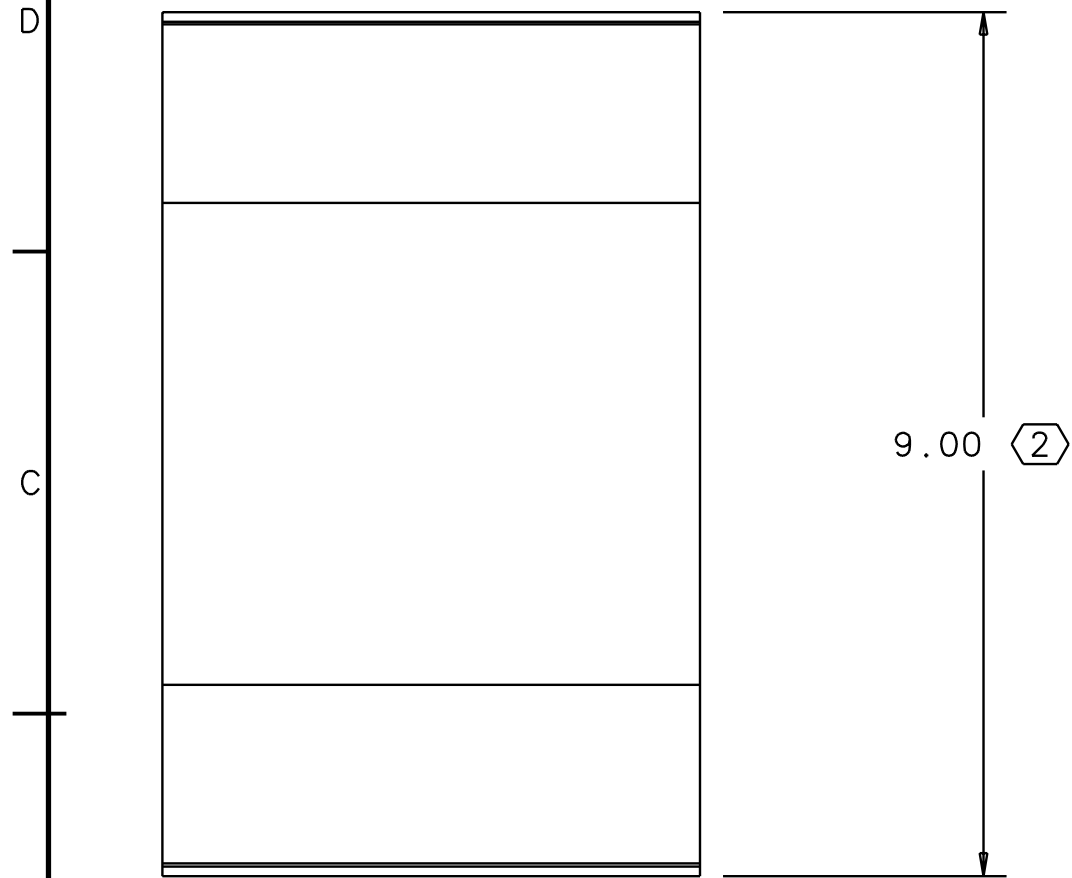


NOTES: (UNLESS OTHERWISE SPECIFIED)
 1. BREAK ALL SHARP EDGES.

2. SEE NOTE 13 AT ASSEMBLY LEVEL TO ASSURE APPROPRIATE DIMENSION FOR FULL PENETRATION WELD.

REV	DATE	DRAWN BY	CHECKED	DCC	DCN/DESCRIPTION
A	8/18/98	C. Conley	D. Coyne		E980078-00/INITIAL RELEASE
B	8/22/98	C. Conley			E980230-00/REPLACED VENTING FEATURES
C	12/14/01	J. Romie			E010369/ADD J PREP



QTY REQD	FSCM NO	PART OR IDENTIFYING NO	PART	NOMENCLATURE OR DISCUSSION	MATERIAL SPECIFICATION	ITEM NO
-	-	-	-	-	304 STAINLESS STEEL	-
PARTS LIST						
DRWN	C. Conley	DATE	8/18/98	CALIFORNIA INSTITUTE OF TECHNOLOGY MASSACHUSETTS INSTITUTE OF TECHNOLOGY		
CHKD		LIGO PROJECT				
ENGR		1-Deas CAD file: D970549_B.asc dcc file: D970549-B.pdf				
APPD		TITLE				
UNLESS OTHERWISE SPECIFIED: DIMENSION UNITS ARE inch (mm) TOLERANCES ARE: X.XXX: ± 0.005 X.XX: ± 0.01 ANGLES: ± 0.5°				LOS2 STIFFENER ADAPTER PLATE		
NEXT ASSEMBLY: D970506				SCALE: 1/2	SIZE B	DRAWING NUMBER D970549-C-D
						SHEET 1 of 1