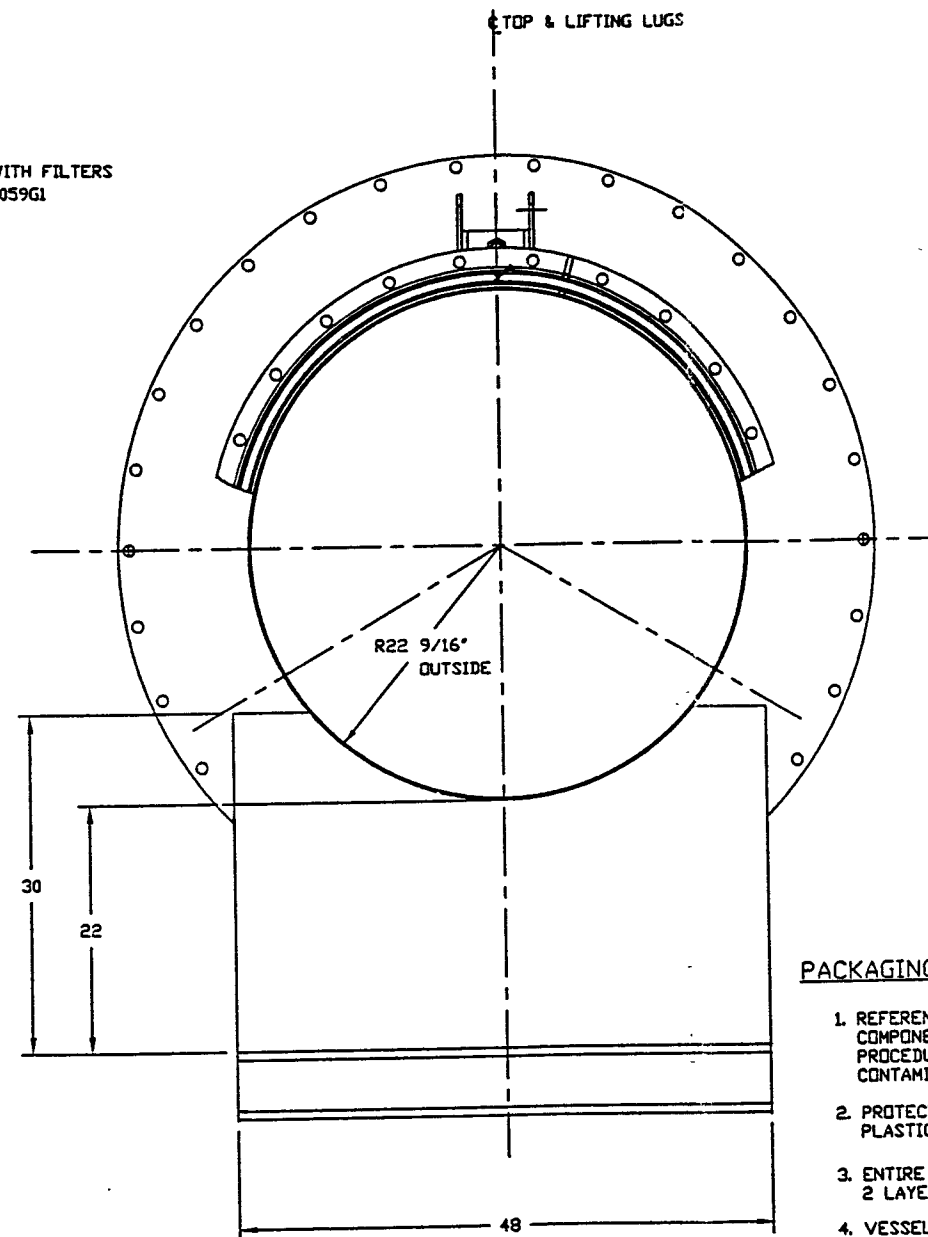
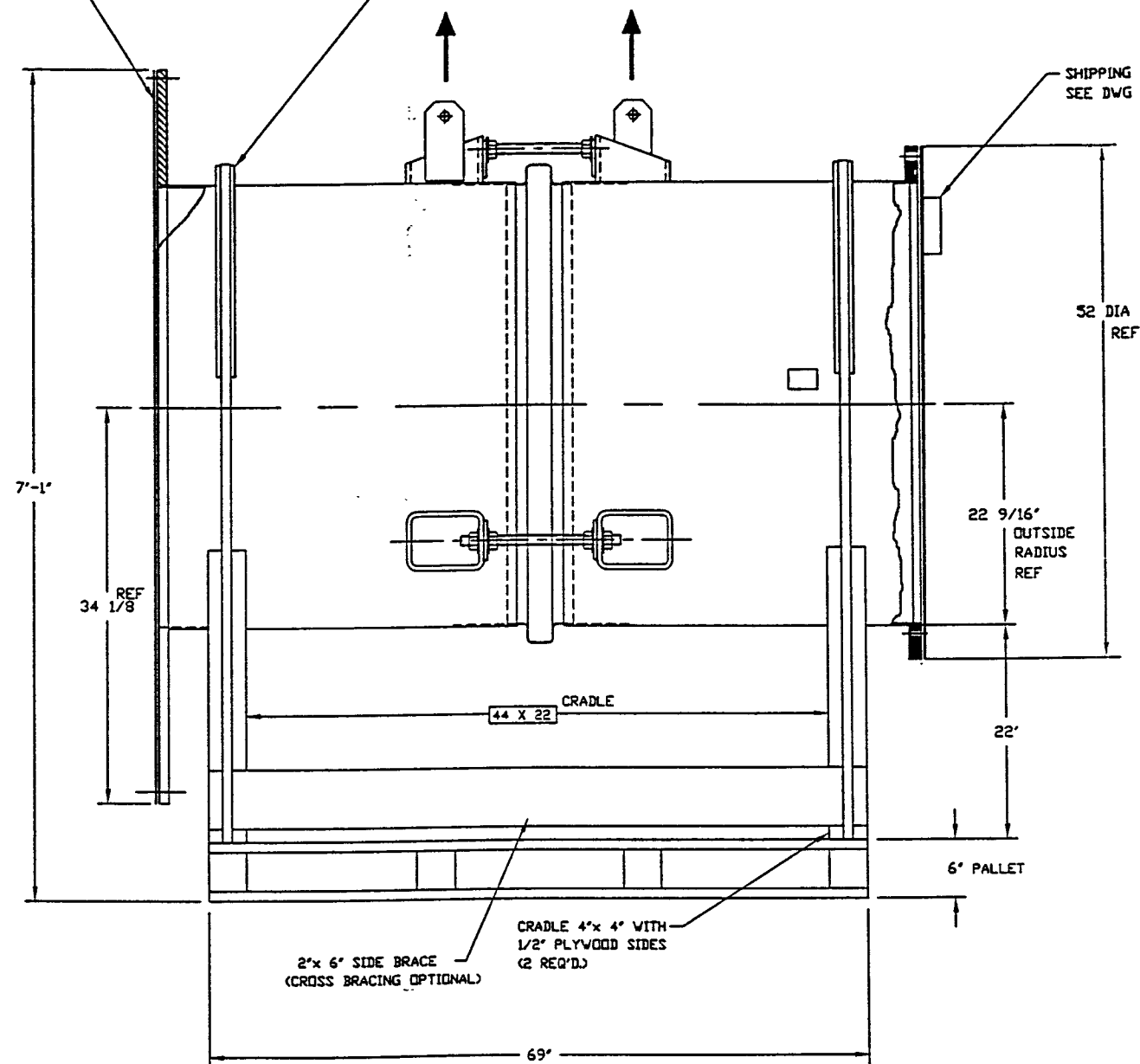


SHIPPING COVER
SEE DWG V049-4-080G4

STRAP CRADLE TO SPOOL
OUTSIDE PLASTIC WRAP AND
2" FOAM STRIPS. (TYPICAL 2 PLACES)

SHIPPING COVER WITH FILTERS
SEE DWG V049-4-059G1



PACKAGING/LIFTING/SHIPPING INSTALLATION

1. REFERENCE DOCUMENTS
COMPONENT PACKAGING, HANDLING, SHIPPING
PROCEDURE - V049-2-123
CONTAMINATION CONTROL PLAN - V049-2-119
2. PROTECT BELLOWS BY WRAPPING WITH HEAVY
PLASTIC STRIPS PRIOR TO BAGGING.
3. ENTIRE VESSEL TO BE SHRINK WRAPPED WITH
2 LAYERS OF 6 MIL POLYETHYLENE.
4. VESSEL TO BE MOUNTED ON TRAILER IN
ORIENTATION SHOWN.
5. TIGHTEN BELLOWS TIE RODS TO LOCK IN
NEUTRAL LENGTH POSITION.
6. REMOVE FROM TRAILER AT SITE BY LIFTING
AT LOCATIONS SHOWN.
7. SECURELY ATTACH THESE LIFTING INSTRUCTIONS
TO VESSEL IN A WATER PROOF
POLYETHYLENE BAG.
8. VESSEL TO BE SHIPPED STRAPPED TO TRUCK AT
CRADLE LOCATIONS SHOWN.
9. COVER WITH CLEAN TIGHT TARPS DURING SHIPPING.
10. VESSEL TO BE SHIPPED VIA AIR RIDE
TRAILER ONLY.
11. CARE TO BE TAKEN DURING LIFTING TO AVOID
HITTING OR RUBBING AGAINST ANY VITAL COMPONENTS.

NOTE: THE TRUCK DRIVER IS TO
ADD PROPER BRACING TO
PREVENT FORWARD OR AFT
MOVEMENT OF THE VESSELS
DURING SHIPMENT.

APPROX. WEIGHT: 1608#

SHT 8 OF 14

PROPRIETARY AND CONFIDENTIAL
THIS DOCUMENT CONTAINS PROPRIETARY
INFORMATION BELONGING TO PROCESS
SYSTEMS INTERNATIONAL, INC. OR ITS
AFFILIATED COMPANIES AND SHALL BE
USED ONLY FOR THE PURPOSE FOR
WHICH IT WAS SUPPLIED. IT SHALL NOT
BE COPIED, REPRODUCED OR OTHERWISE
USED, NOR SHALL SUCH INFORMATION BE
FURNISHED IN WHOLE OR IN PART TO
OTHERS EXCEPT IN ACCORDANCE WITH THE
TERMS OF ANY AGREEMENT UNDER WHICH
IT WAS SUPPLIED OR WITH THE PRIOR
WRITTEN CONSENT OF PROCESS SYSTEMS
INTERNATIONAL, INC. AND SHALL BE
RETURNED UPON REQUEST.

DWG. NO.	DESCRIPTION	DWG. NO.	DESCRIPTION
	REFERENCE DRAWINGS		

UNLESS OTHERWISE SPECIFIED
DIMENSIONS ARE IN INCHES
FRACTIONAL 1/16
ANGULAR APPROX 30° 30' 30" 45° 45'
THIS PLACE DECIMAL 2 25
THREE PLACE DECIMAL 2 25
FINISHED SURFACE RING
BREAK CORNERS TO
REMOVE ALL BURRS

DO NOT SCALE THIS DRAWING	REV	DESCRIPTION	ISSUE DESCRIPTION
0	ISSUED FOR SHIPPING		

PROCESS SYSTEMS INTERNATIONAL, INC.
20 WALCUP DR. WESTBOROUGH, MASSACHUSETTS 01581 USA

ADAPTER A-14
SHIPPING ASSY.
LIGO VACUUM EQUIPMENT

CAD FILE: V0494229
SCALE: 1-1/2" = 1"
SHEET: 1 OF 1

DATE: 6/20/97
BY: DA
CHKD: DRWN: DATE: DEGN:

LIGO-D970525-00-V