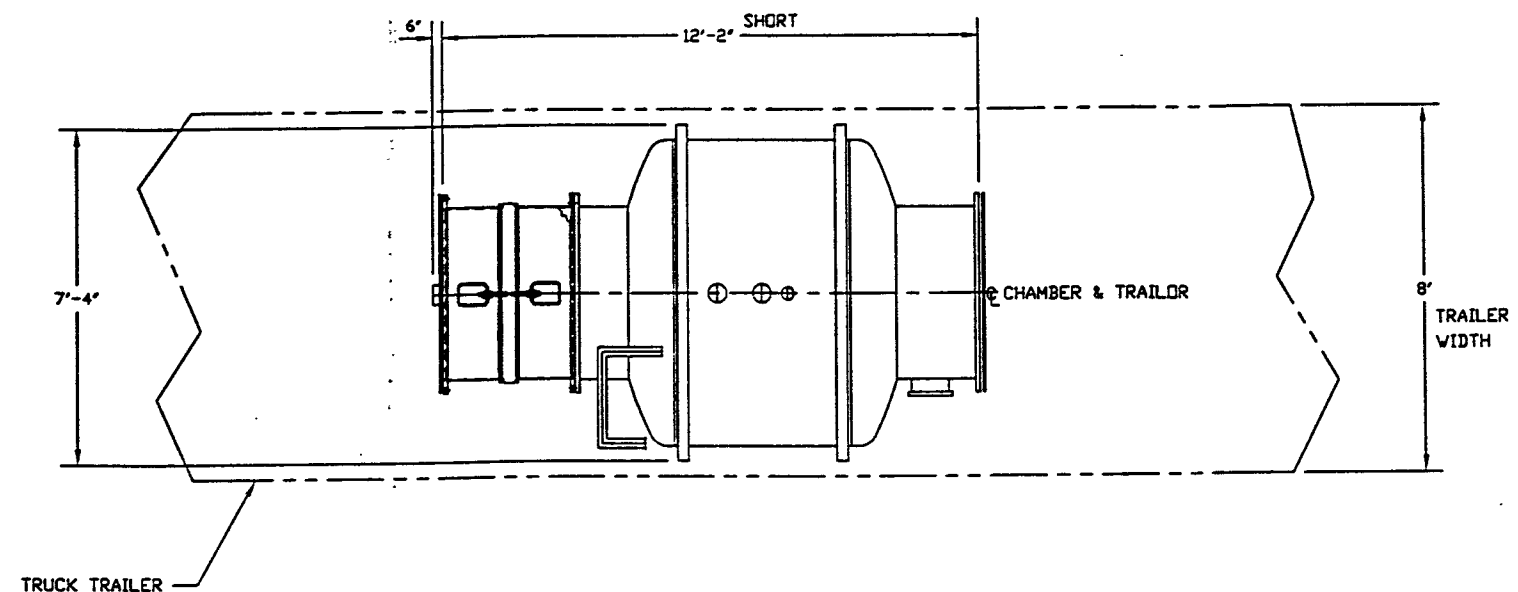
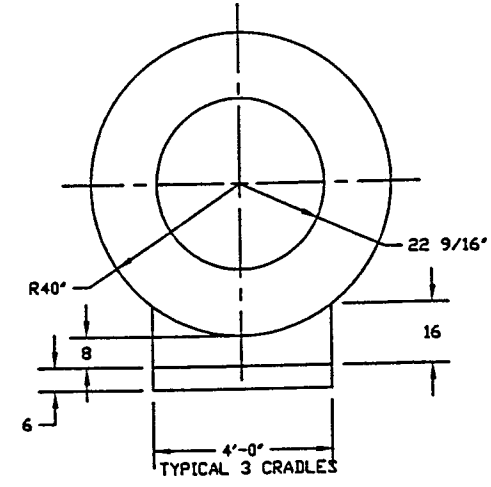
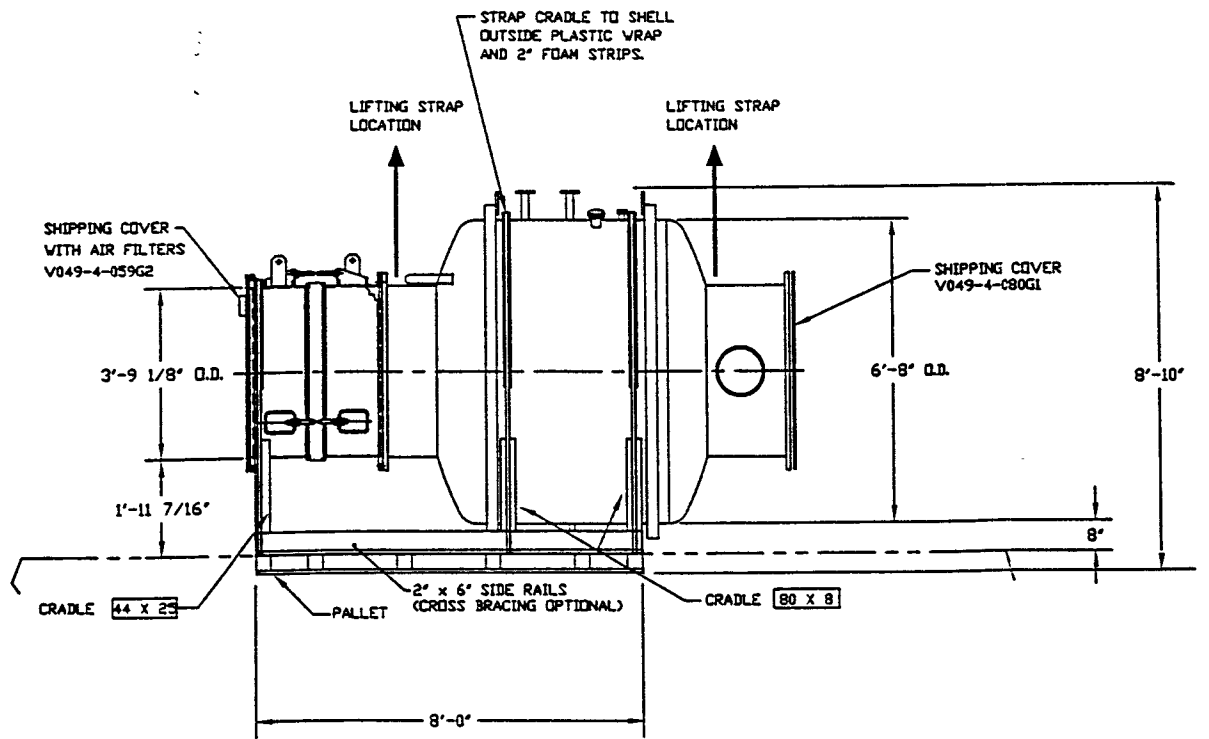


PACKAGING/LIFTING/SHIPPING INSTALLATION

1. REFERENCE DOCUMENTS
COMPONENT PACKAGING, HANDLING, SHIPPING
PROCEDURE - V049-2-123
CONTAMINATION CONTROL PLAN - V049-2-119
2. PROTECT BELLOWS BY WRAPPING WITH HEAVY PLASTIC STRIPS
PRIOR TO BAGGING.
3. ENTIRE VESSEL TO BE SHRINK WRAPPED WITH 2 LAYERS
OF 6 MIL POLYETHYLENE.
4. VESSEL TO BE MOUNTED ON TRAILER IN
ORIENTATION SHOWN.
5. TIGHTEN BELLOWS TIE RODS TO LOCK IN
NEUTRAL LENGTH POSITION.
6. REMOVE FROM TRAILER AT SITE BY LIFTING
WITH STRAPS AT LOCATIONS SHOWN.
7. SECURELY ATTACH THESE LIFTING INSTRUCTIONS
TO VESSEL IN A WATER PROOF
POLYETHYLENE BAG.
8. VESSEL TO BE SHIPPED STRAPPED TO TRUCK AT
CRADLE LOCATIONS SHOWN.
9. COVER WITH CLEAN TIGHT TARPS DURING SHIPPING.
10. VESSEL TO BE SHIPPED VIA AIR RIDE
TRAILOR ONLY.
11. CARE TO BE TAKEN WITH LIFTING STRAPS TO AVOID
HITTING OR RUBBING AGAINST ANY NOZZLES.



NOTE: THE TRUCK DRIVER IS TO ADD
PROPER BRACING TO PREVENT
FORWARD OR AFT MOVEMENT OF
VESSELS DURING SHIPMENT.



SHT 4 OF 14

SHIPPING WEIGHT=9000#

PROCESS SYSTEMS INTERNATIONAL INC.
20 WALKUP DR. WESTBOROUGH, MASSACHUSETTS 01581 USA

80K SHORT/BE-4
SHIPPING ASSY.
LIGO VACUUM EQUIPMENT

CAD FILE V0494222	SIZE D	DWG. NO. V049-4-222	REV. 0
SCALE 1/2"=1'-0"	SHEET 1	OF 1	

PROPRIETARY AND CONFIDENTIAL

THIS DOCUMENT CONTAINS PROPRIETARY INFORMATION BELONGING TO PROCESS SYSTEMS INTERNATIONAL, INC. OR ITS AFFILIATED COMPANIES AND SHALL BE USED ONLY FOR THE PURPOSE FOR WHICH IT WAS SUPPLIED. IT SHALL NOT BE COPIED, REPRODUCED OR OTHERWISE USED, NOR SHALL SUCH INFORMATION BE FURNISHED IN WHOLE OR IN PART TO OTHERS EXCEPT IN ACCORDANCE WITH THE TERMS OF ANY AGREEMENT UNDER WHICH IT WAS SUPPLIED OR WITH THE PRIOR WRITTEN CONSENT OF PROCESS SYSTEMS INTERNATIONAL, INC. AND SHALL BE RETURNED UPON REQUEST.

DWG. NO.	DESCRIPTION	DWG. NO.	DESCRIPTION
	REFERENCE DRAWINGS		

UNLESS OTHERWISE SPECIFIED
DIMENSIONS ARE IN INCHES
TOLERANCES:
FRACTIONAL &
ANGULAR DIMS AS SHOWN ARE
TWO PLACE DECIMAL, 8 IN
THREE PLACE DECIMAL, & ARE
FINISHED SURFACE UNLESS
BREAK CORNERS OR
REMOVE ALL BURRS

DO NOT SCALE THIS DRAWING	0	ISSUED FOR SHIPPING																		
USED ON	REV	DESCRIPTION	ISSUE DESCRIPTION	CHKD	DRWN	DATE	DESB													

LIG0-D970521-00-V

JUN 20, 1997 - 171003