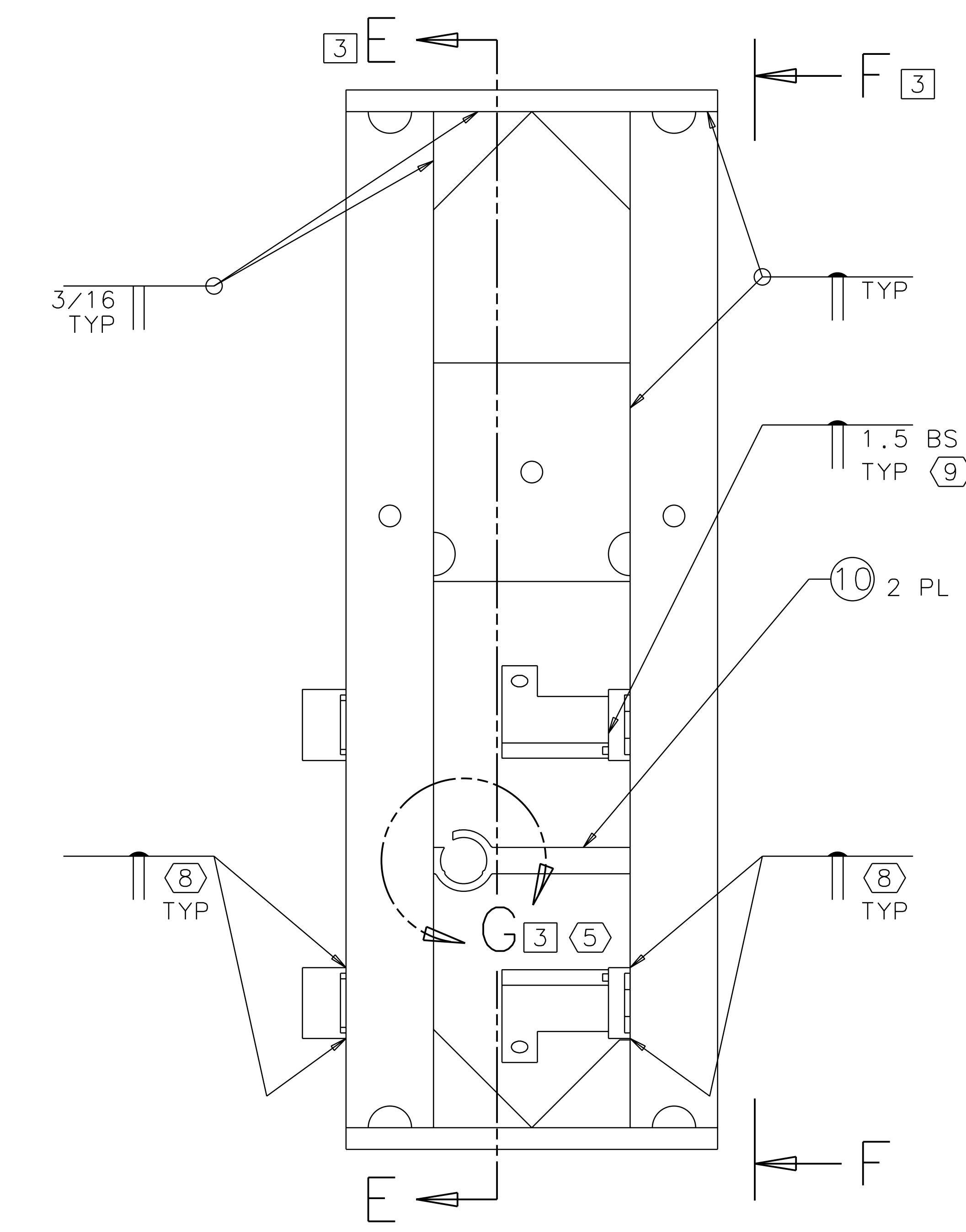
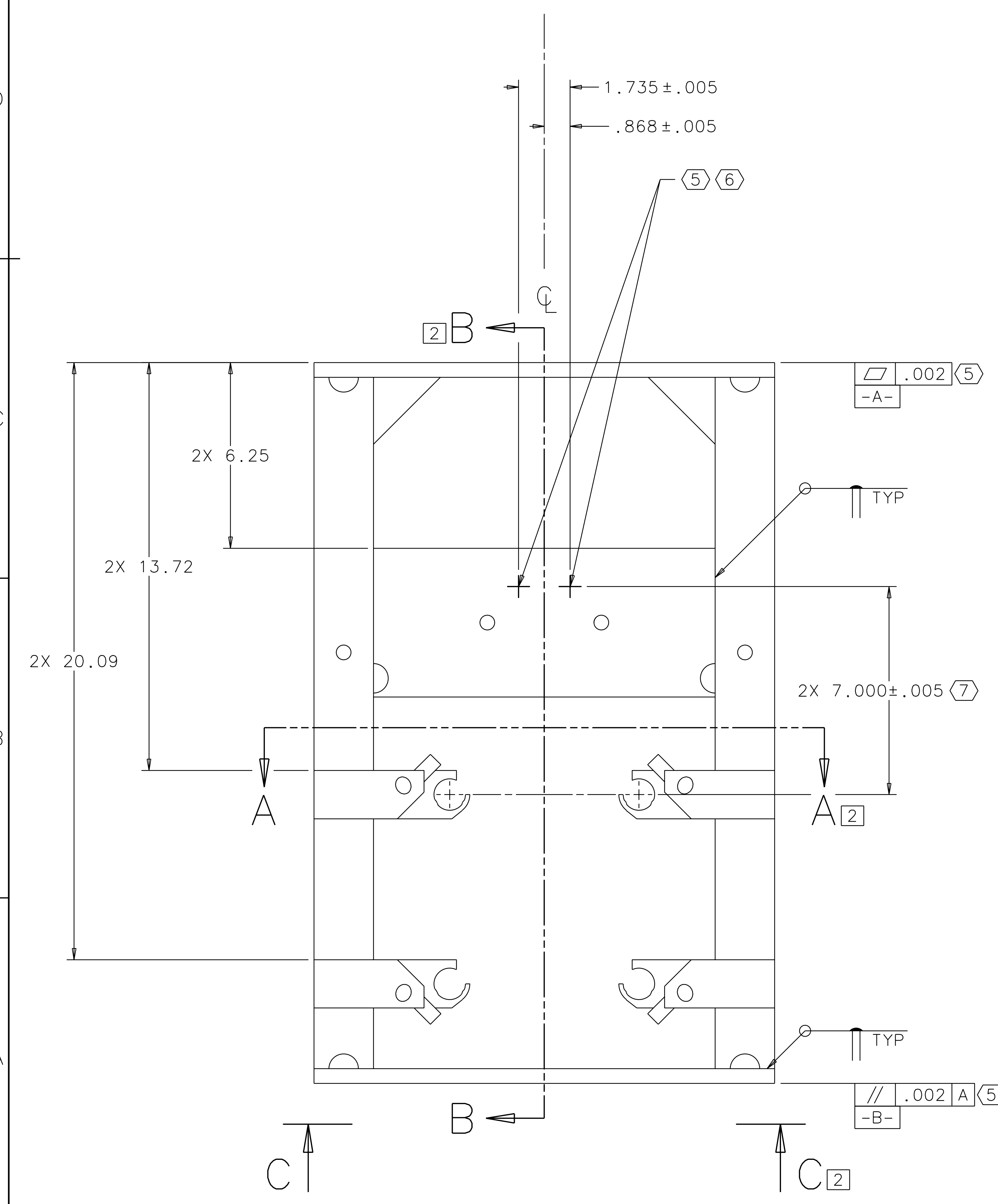
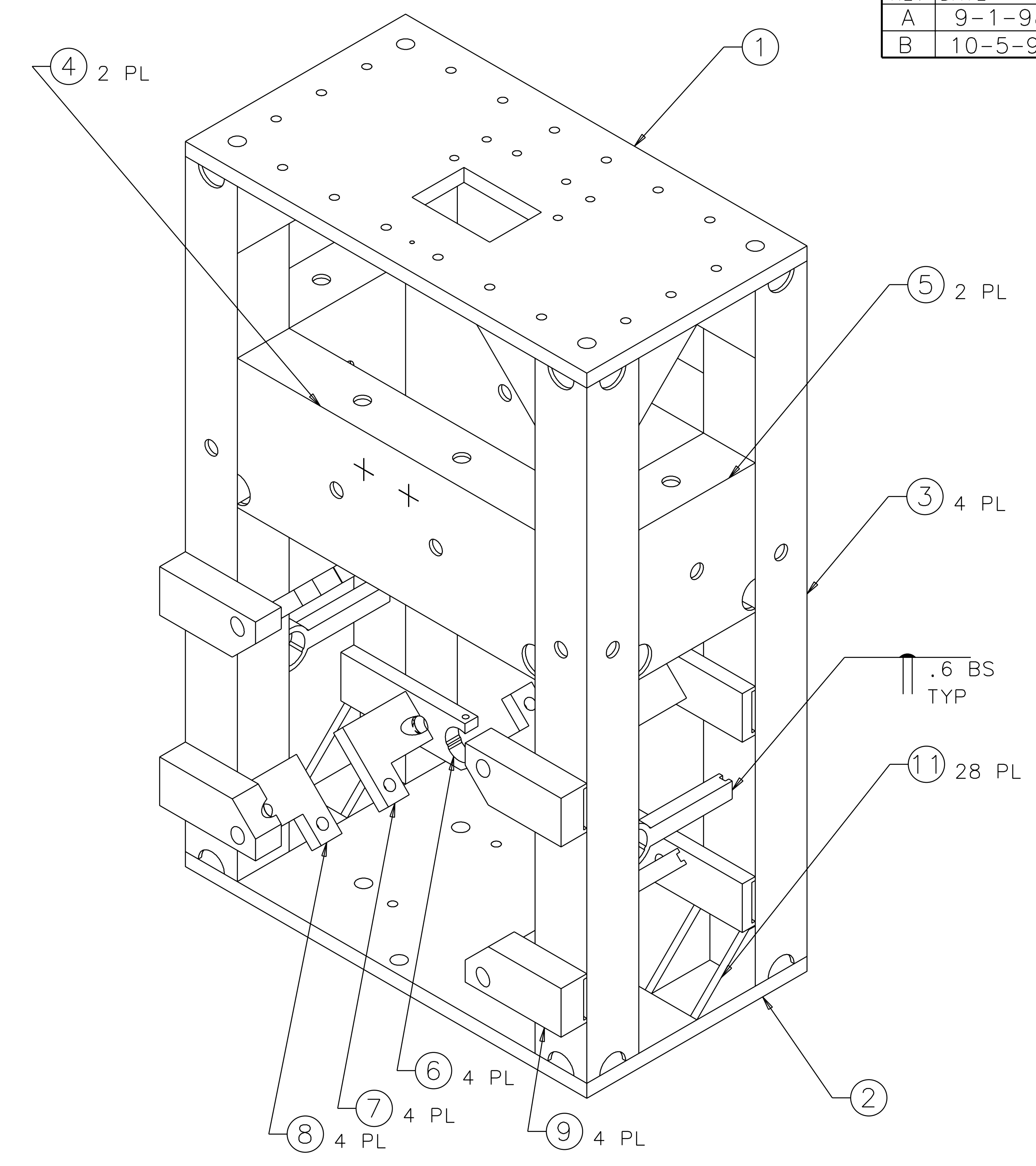
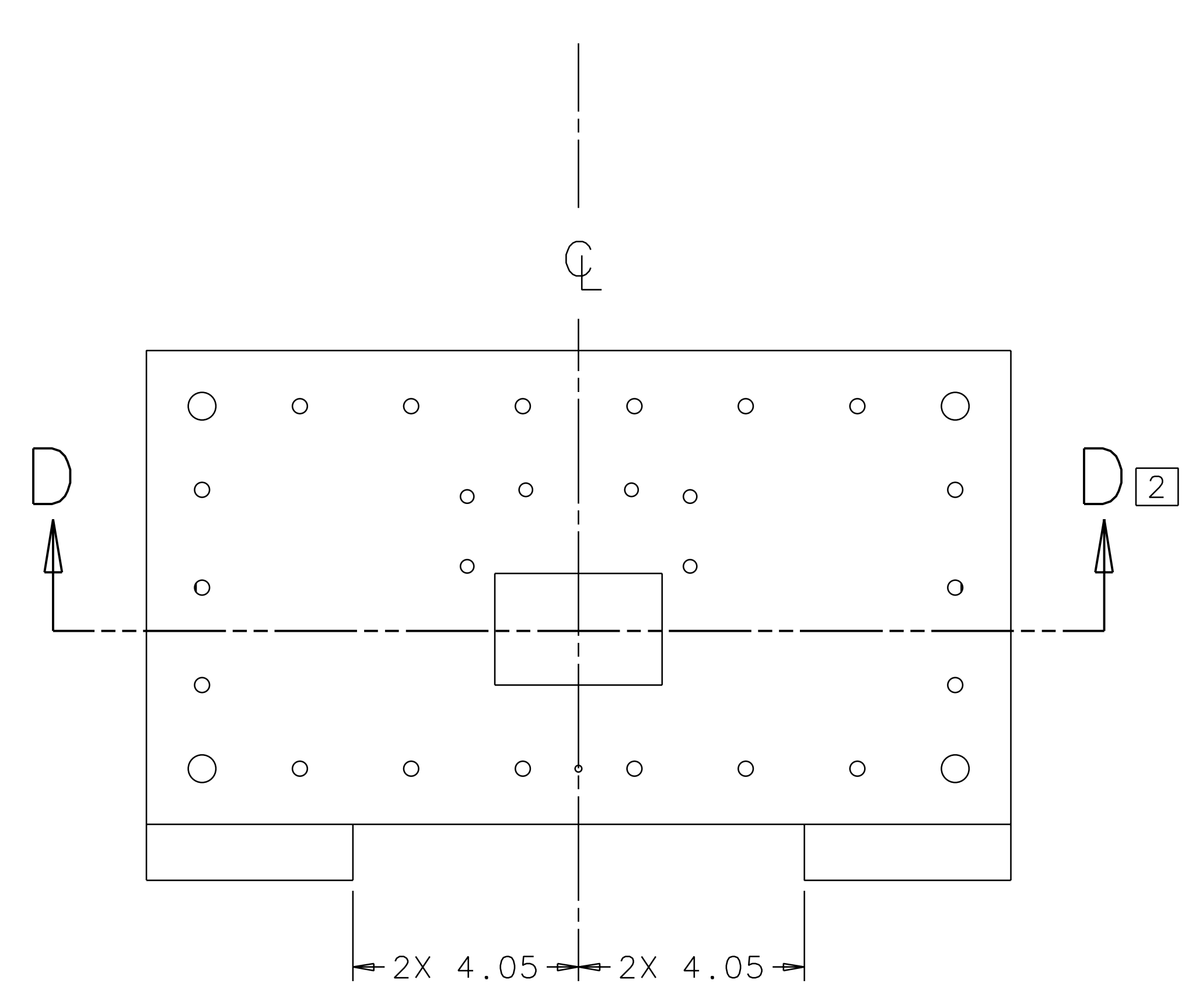


REV	DATE	DRAWN BY	CHECKED	DCC	DCN/DESCRIPTION
A	9-1-98	C. Conley			E980218-00/INITIAL RELEASE
B	10-5-98	J. Romie			E980255-00

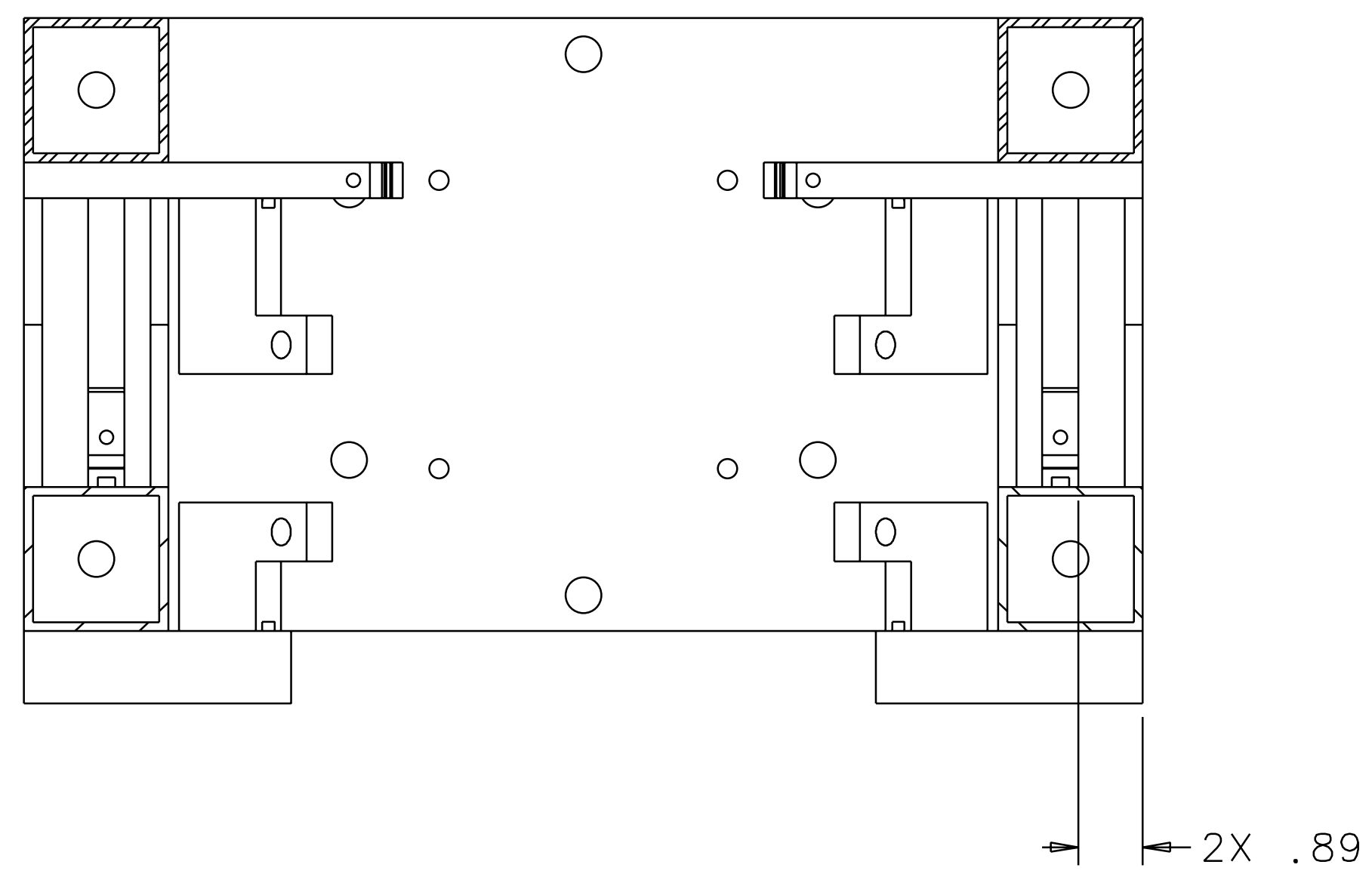
NOTES: (UNLESS OTHERWISE SPECIFIED)

1. INTERPRET DRAWING PER ANSI Y14.5M-1982.
2. BREAK ALL SHARP EDGES.
3. SPECIFICATIONS FOR THE CONSTRUCTION OF THIS ASSEMBLY ARE DETAILED IN THE "LARGE OPTIC SUSPENSION STRUCTURAL FABRICATION SPECIFICATION" (LIGO E970038).
4. WHEREVER APPLICABLE, PARTS AND FEATURES ARE LOCATED RELATIVE TO ITEM 1 (TOP PLATE).
5. NOTED FEATURES TO BE MACHINED AFTER ANNEALING.
6. SIZE OF CROSSHAIR MARKS TO BE APPROXIMATELY AS SHOWN. ETCH OR SCRIBE ON FACE OF STRUCTURE AFTER ANNEALING. MAXIMUM WIDTH .01, MAXIMUM DEPTH .02.
7. APPLY CROSSHAIRS AFTER ANNEALING. SEE VIEW F-F, SHEET 3, FOR LOCATIONS AND MACHINING DETAILS OF FEATURES ON ITEM 6 (SENSOR/ACTUATOR BRACKET), FROM WHICH CROSSHAIRS ARE VERTICALLY LOCATED.
8. MELT-THROUGH WELD ACROSS ENTIRE FLAT FACE OF ITEM 3 (LEG).
9. APPLYS TO WELDMENT OF ITEM 7 (REAR SAFETY STOP BRACKET) TO ITEM 6 (SENSOR/ACTUATOR BRACKET) AND ITEM 8 (FRONT SAFETY STOP BRACKET) TO ITEM 9 (BRACKET SUPPORT).
10. SIDE FACE OF ITEM 2 (BOTTOM PLATE).
11. REFERENCE TO SIDE FACE OF ITEM 1 (TOP PLATE).
12. TOOLING BALL TO BE MOUNTED ON DRILLING FIXTURE TO NOTED RELATIVE DIMENSIONS.
13. GUSSET THICKNESSES ARE NOT TO SCALE IN DRAWING VIEWS.

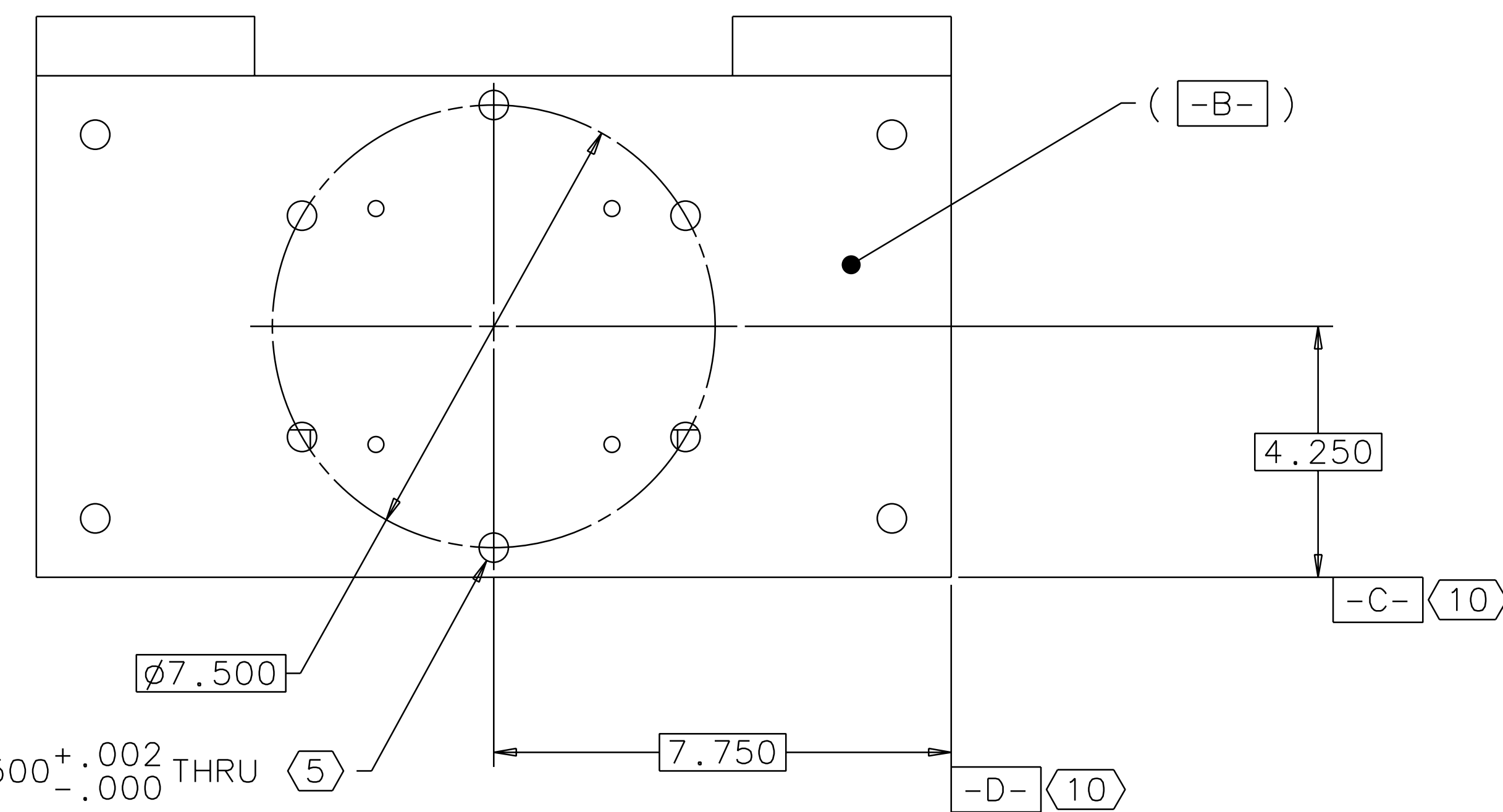


QTY	REQD	FSOM NO	PART OR IDENTIFYING NO	NOMENCLATURE OR DISCRIPTION	MATERIAL SPECIFICATION	ITEM NO
24				GUSSET, 2.25 x 2.25 x 45°, .12 THK (13)	304 STAINLESS STEEL	11
2		D970557		SIDE SENSOR/ACTUATOR BRACKET		10
4		D970558		BRACKET SUPPORT		9
4		D980373		FRONT SAFETY STOP BRACKET		8
4		D980374		REAR SAFETY STOP BRACKET		7
4		D970559		REAR SENSOR/ACTUATOR BRACKET		6
2		D960506		SIDE STIFFENER		5
2		D960502		FRONT STIFFENER		4
4		D960504		LEG		3
1		D960505		BOTTOM PLATE		2
1		D970556		TOP PLATE		1

DRWN	C. Conley	DATE	9-1-98	CALIFORNIA INSTITUTE OF TECHNOLOGY MASSACHUSETTS INSTITUTE OF TECHNOLOGY	
CHKD				LIGO PROJECT	
ENGR				I-Deas CAD file: D970508_A.dwg dcc file: D970508_A.pdf	
APPD				TITLE LOS3 STRUCTURE ASSEMBLY (FOLDING MIRROR)	
UNLESS OTHERWISE SPECIFIED: DIMENSION UNITS ARE inches [mm] TOLERANCES ARE: X.XXX: ± 0.01 X.XX: ± 0.03 ANGLES: ± 0.5°				SCALE: NTS	SHEET 1 OF 7
NEXT ASSEMBLY: D970507				SIZE DRAWING NUMBER E D970508-B-D	

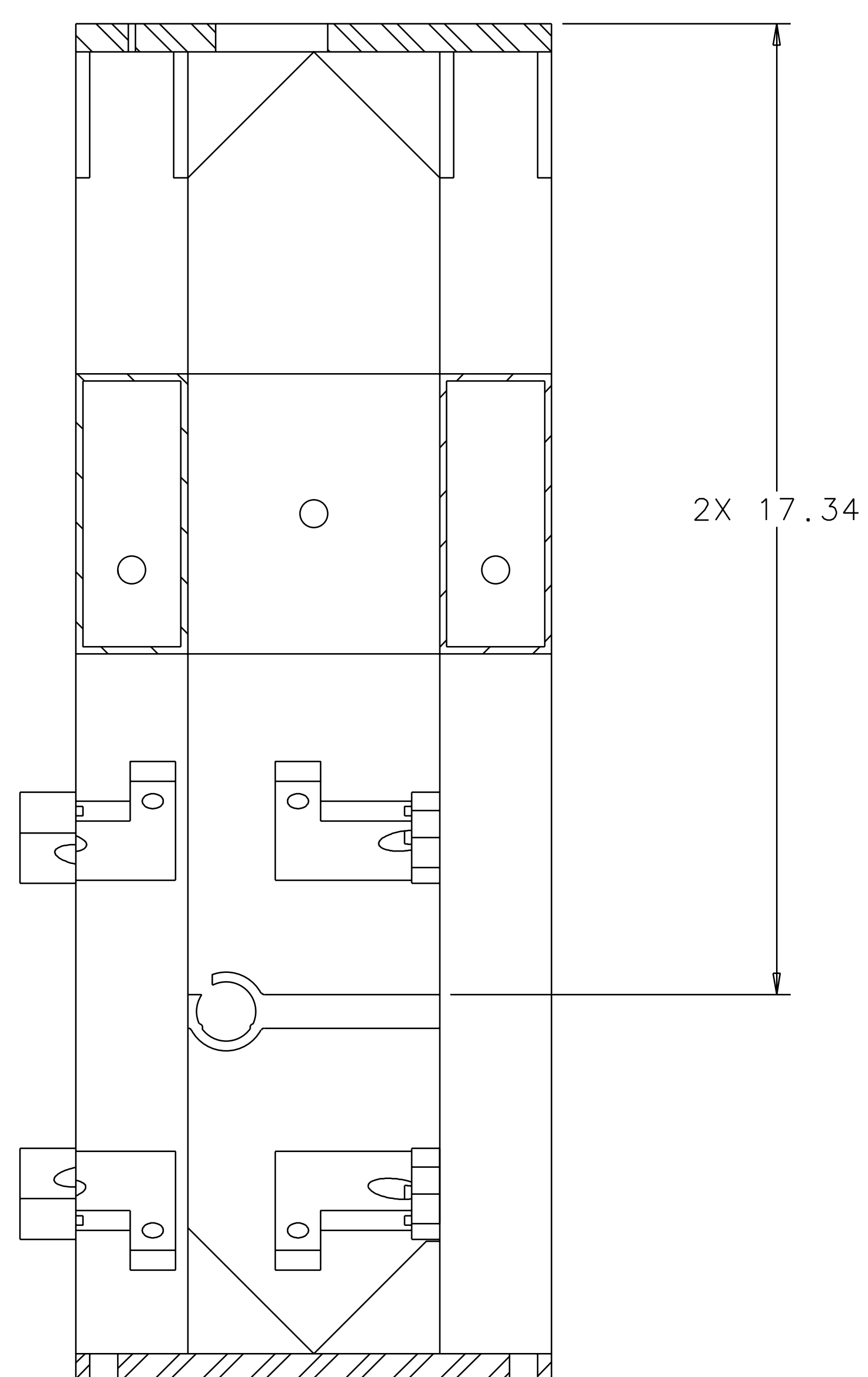


SECTION A-A 1

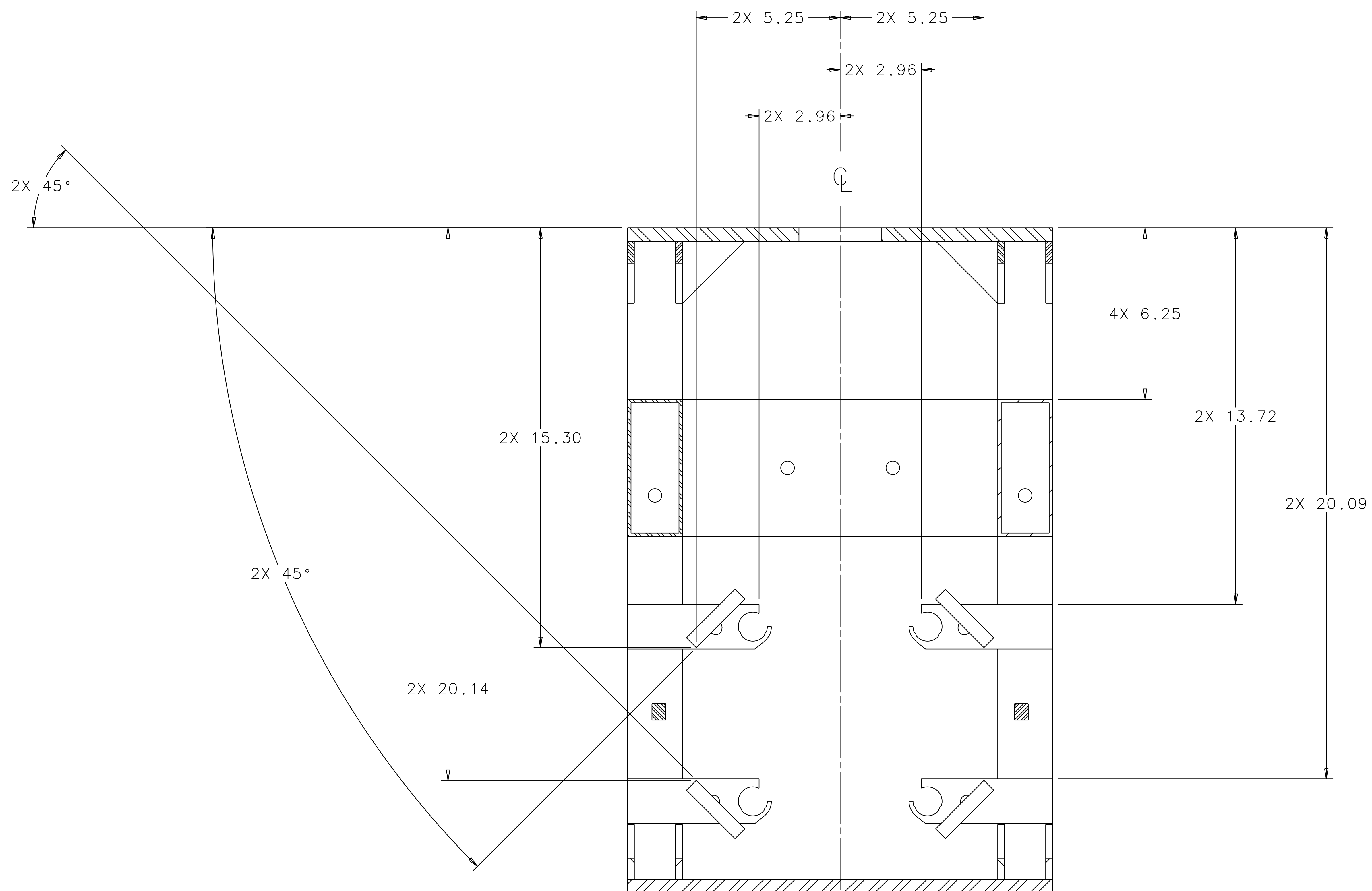


6X $\phi .500^{+ .002}_{- .000}$ THRU
EQUALLY SPACED
 $\phi .002$ M B C D

VIEW C-C 1

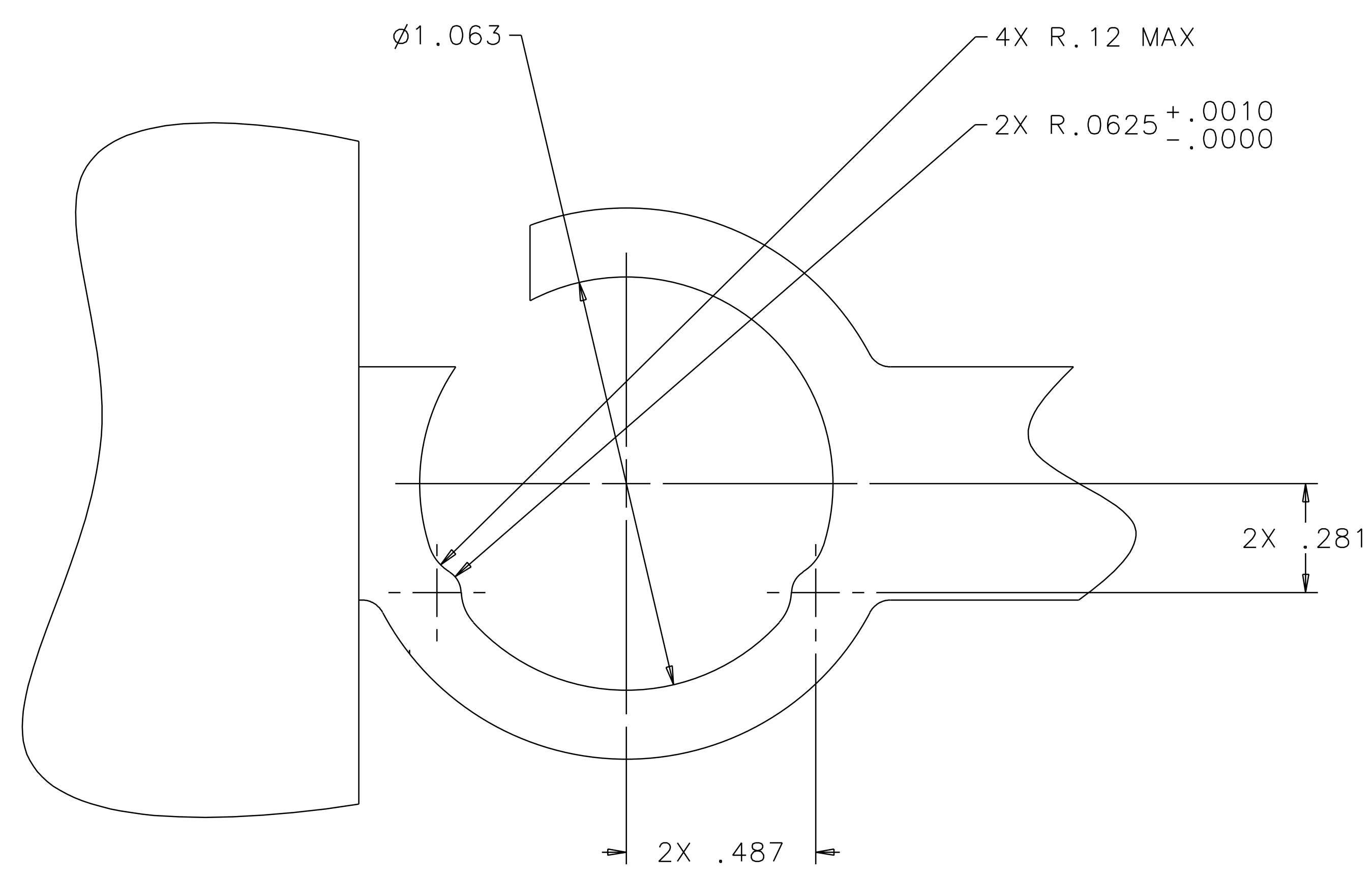


SECTION B-B 1

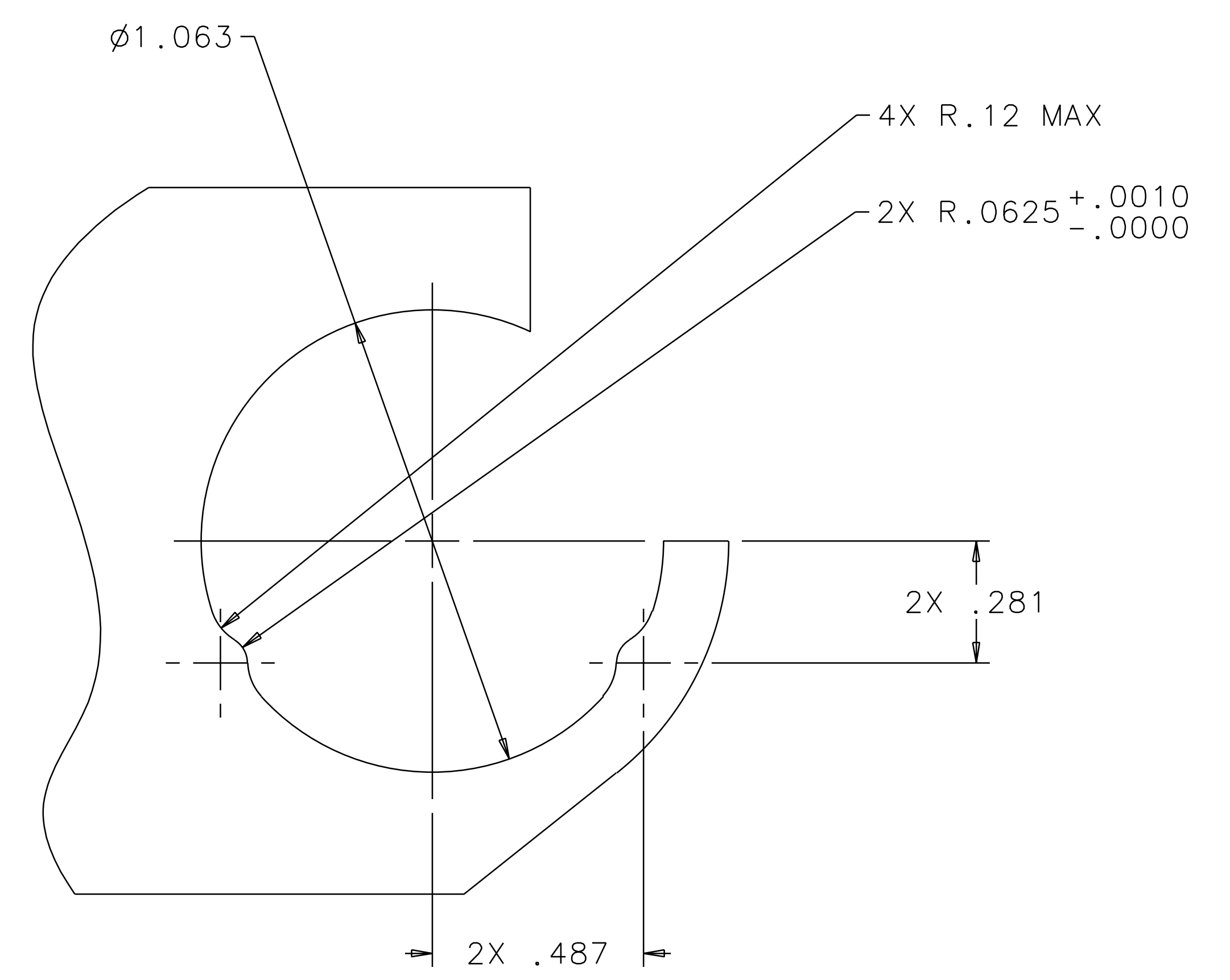


SECTION D-D 1

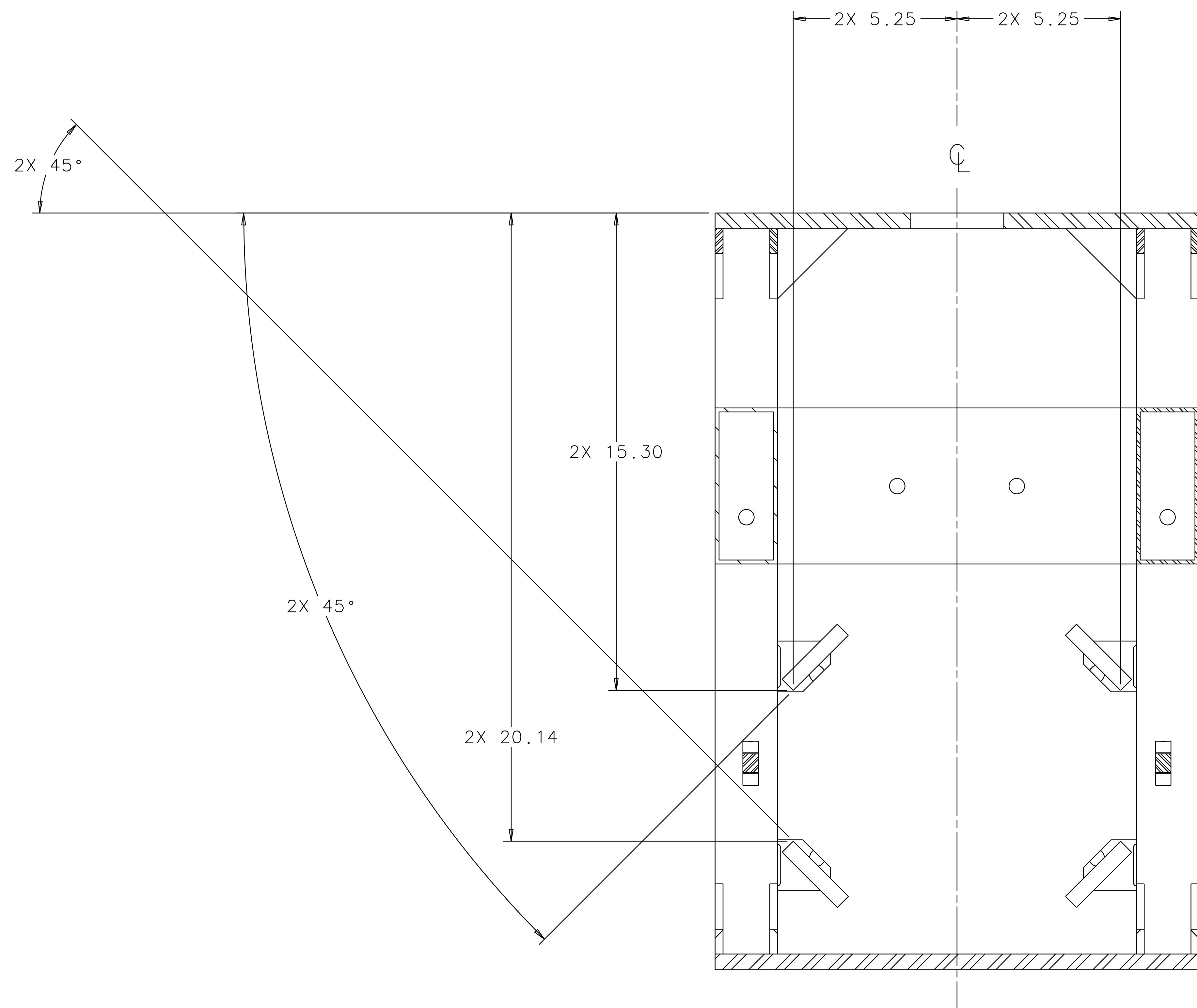
CALIFORNIA INSTITUTE OF TECHNOLOGY		LIGO PROJECT	
MASSACHUSETTS INSTITUTE OF TECHNOLOGY			
LOS3 STRUCTURE ASSEMBLY (FOLDING MIRROR)			
SCALE: NTS	SIZE	DRAWING NUMBER	SHEET
	E	D970508-B-D	2 OF 7



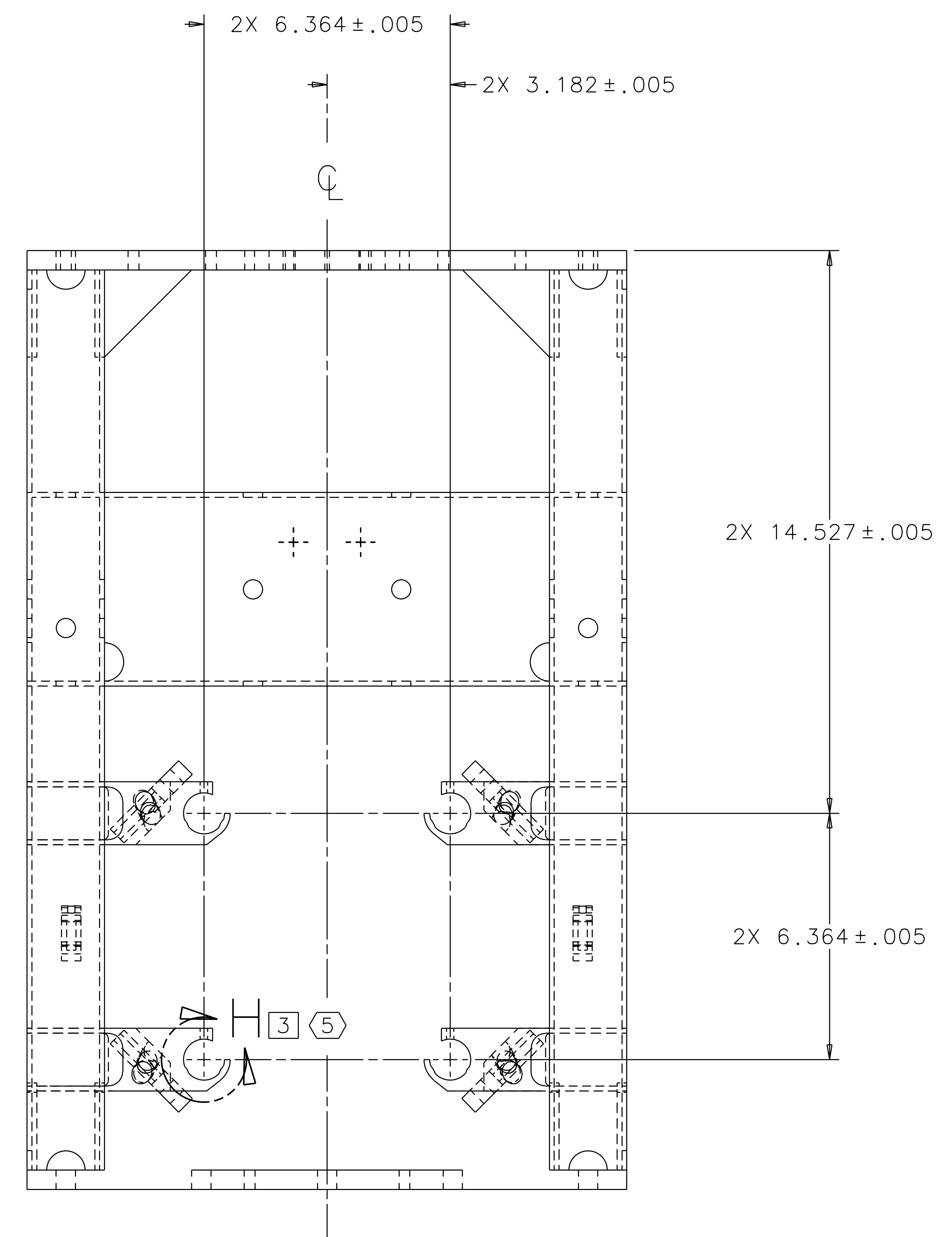
VIEW G 1 5
 MACHINED SENSOR/ACTUATOR RECEPTACLE, 2 PL



VIEW H 3 5
 MACHINED SENSOR/ACTUATOR RECEPTACLE, 4 PL

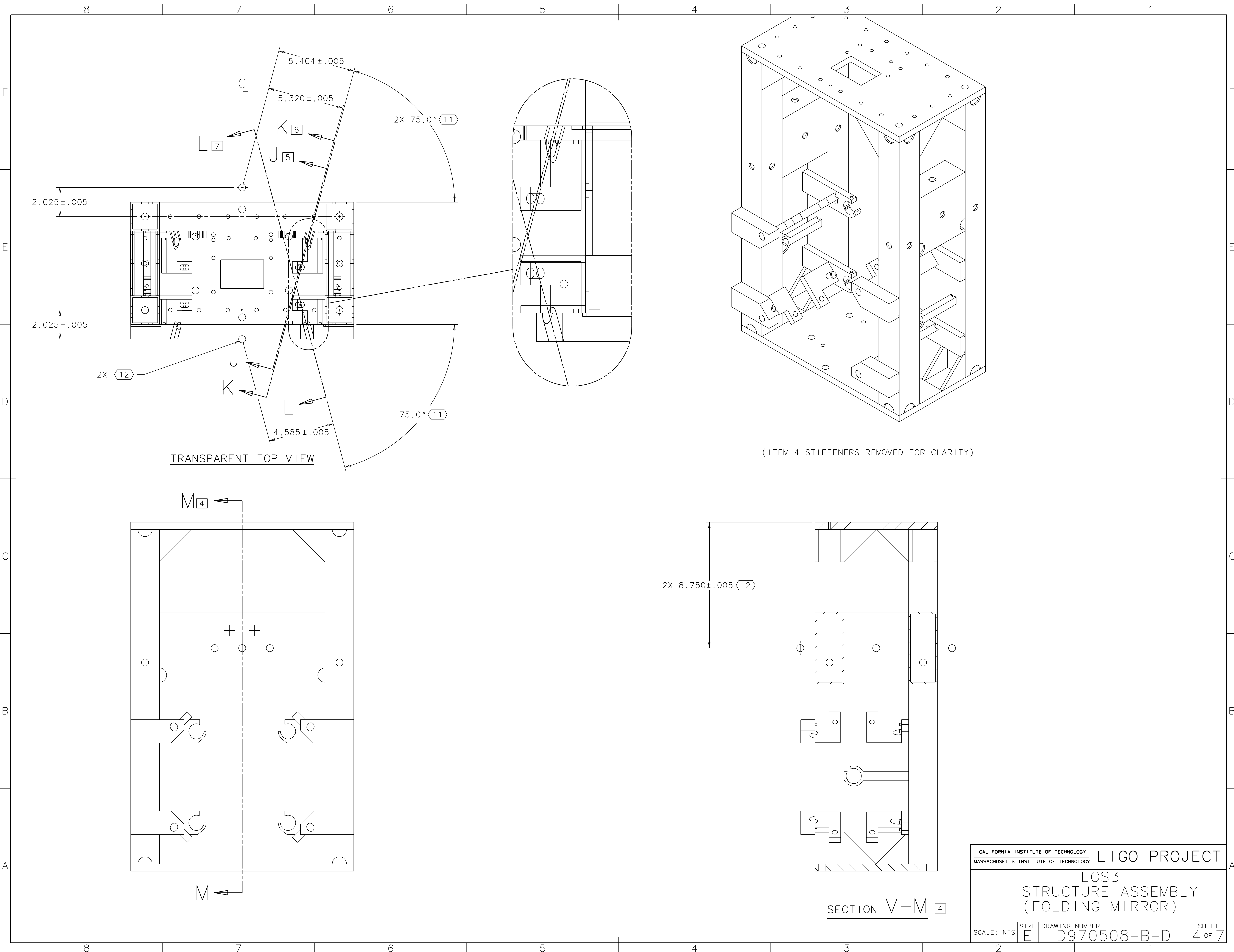


SECTION E-E 1



VIEW F-F 1

CALIFORNIA INSTITUTE OF TECHNOLOGY		LIGO PROJECT	
MASSACHUSETTS INSTITUTE OF TECHNOLOGY			
LOS3 STRUCTURE ASSEMBLY (FOLDING MIRROR)			
SCALE: NTS	SIZE	DRAWING NUMBER	SHEET
E		D970508-B-D	3 OF 7

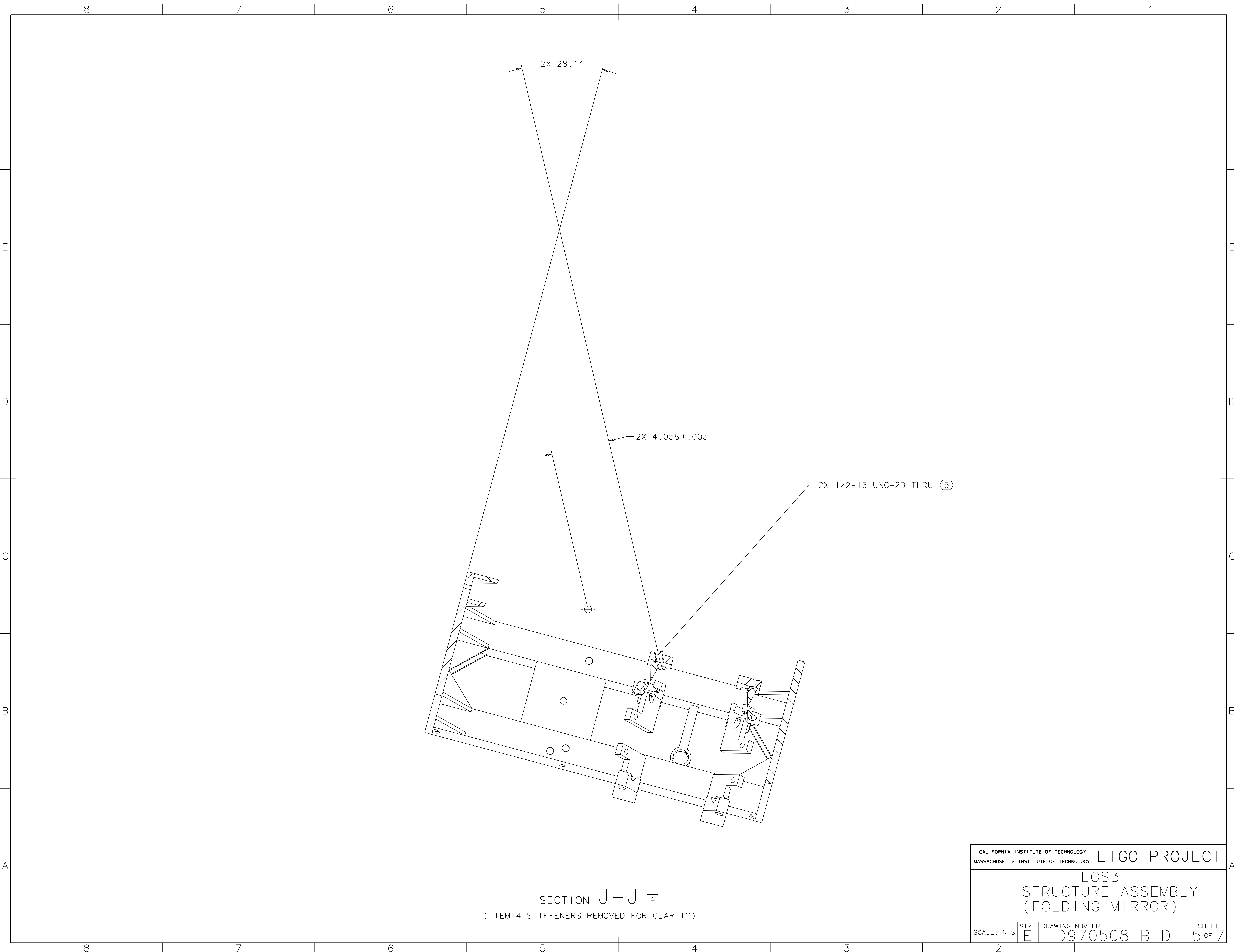


TRANSPARENT TOP VIEW

(ITEM 4 STIFFENERS REMOVED FOR CLARITY)

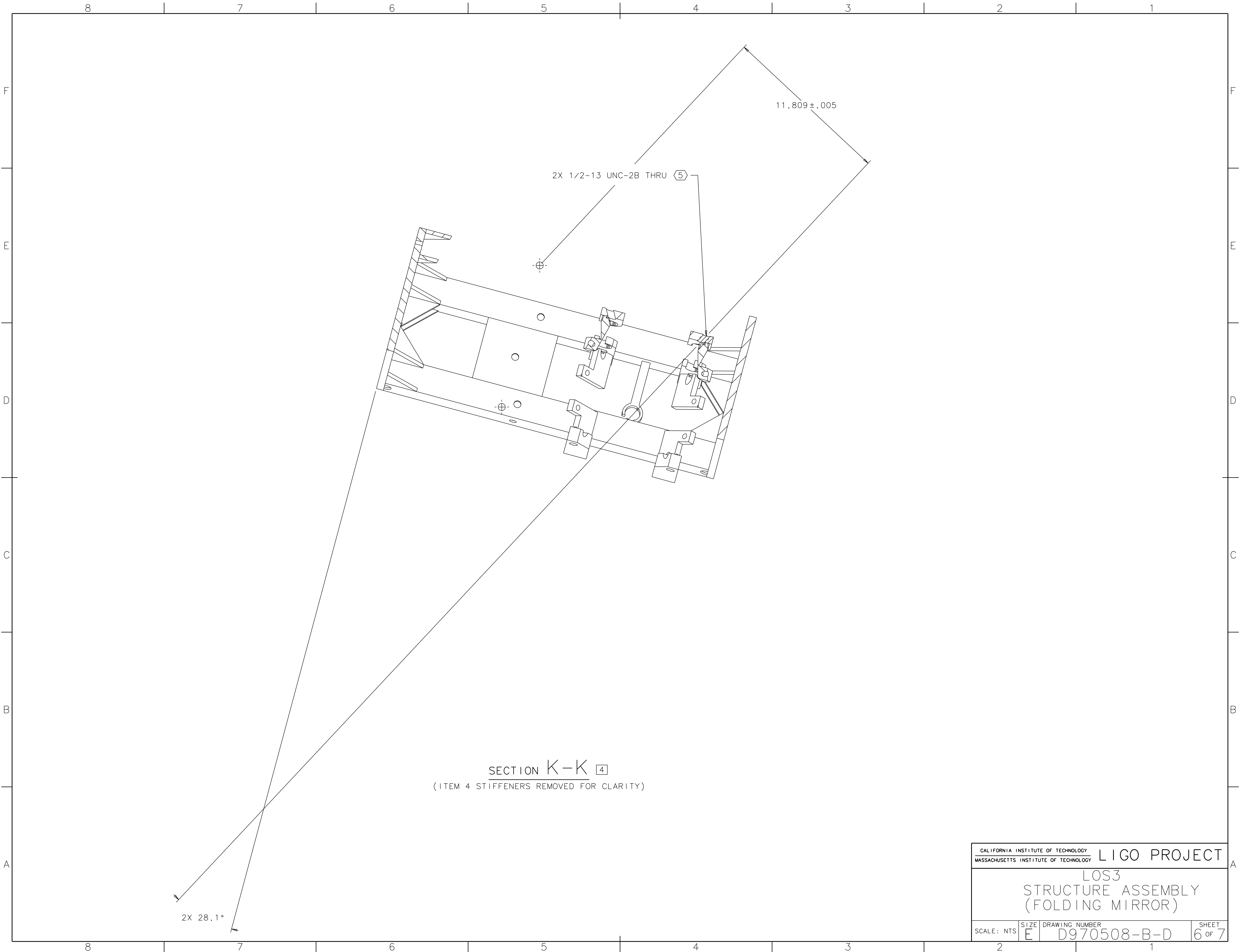
SECTION M-M (4)

CALIFORNIA INSTITUTE OF TECHNOLOGY		LIGO PROJECT	
MASSACHUSETTS INSTITUTE OF TECHNOLOGY			
LOS3 STRUCTURE ASSEMBLY (FOLDING MIRROR)			
SCALE: NTS	SIZE	DRAWING NUMBER	SHEET
E		D970508-B-D	4 OF 7

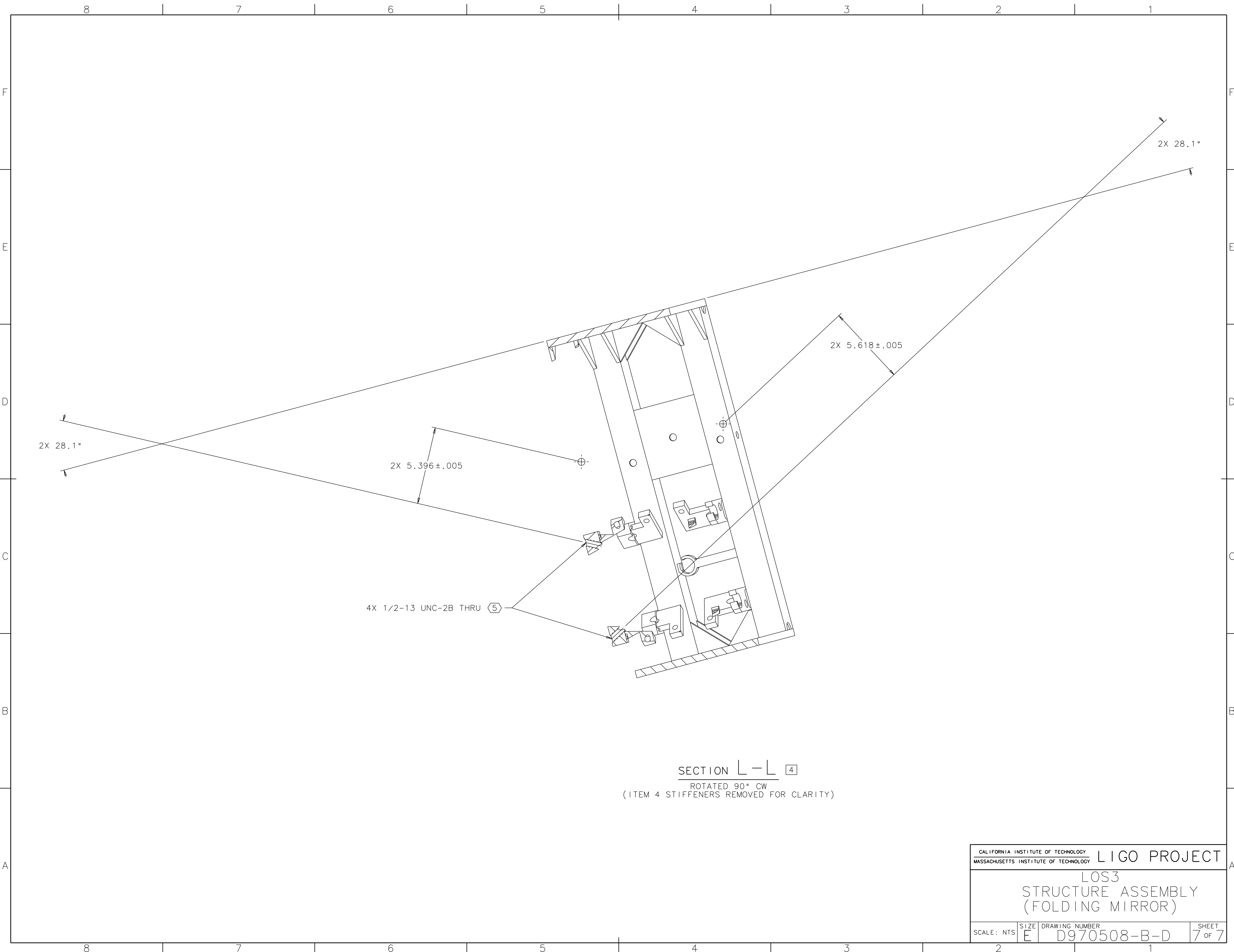


SECTION J-J 4
 (ITEM 4 STIFFENERS REMOVED FOR CLARITY)

CALIFORNIA INSTITUTE OF TECHNOLOGY MASSACHUSETTS INSTITUTE OF TECHNOLOGY		LIGO PROJECT	
LOS3 STRUCTURE ASSEMBLY (FOLDING MIRROR)			
SCALE: NTS	SIZE	DRAWING NUMBER	SHEET
E	D970508-B-D	5	OF 7



CALIFORNIA INSTITUTE OF TECHNOLOGY MASSACHUSETTS INSTITUTE OF TECHNOLOGY		LIGO PROJECT	
LOS3 STRUCTURE ASSEMBLY (FOLDING MIRROR)			
SCALE: NTS	SIZE	DRAWING NUMBER	SHEET
2	E	D970508-B-D	6 OF 7



SECTION L-L [4]
 ROTATED 90° CW
 (ITEM 4 STIFFENERS REMOVED FOR CLARITY)

CALIFORNIA INSTITUTE OF TECHNOLOGY MASSACHUSETTS INSTITUTE OF TECHNOLOGY		LIGO PROJECT	
LOS3 STRUCTURE ASSEMBLY (FOLDING MIRROR)			
SCALE: NTS	SIZE E	DRAWING NUMBER D970508-B-D	SHEET 7 OF 7